

174,341 SF
Industrial Space



SEATTLE DISTRIBUTION CENTER

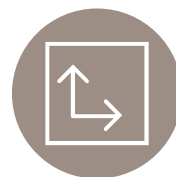
6719 E Marginal Way S, Tukwila, WA

G | I | D
INDUSTRIAL





Building A & B
availability



174,341 SF
total



24' - 26'
clear height



Dock-high
loading

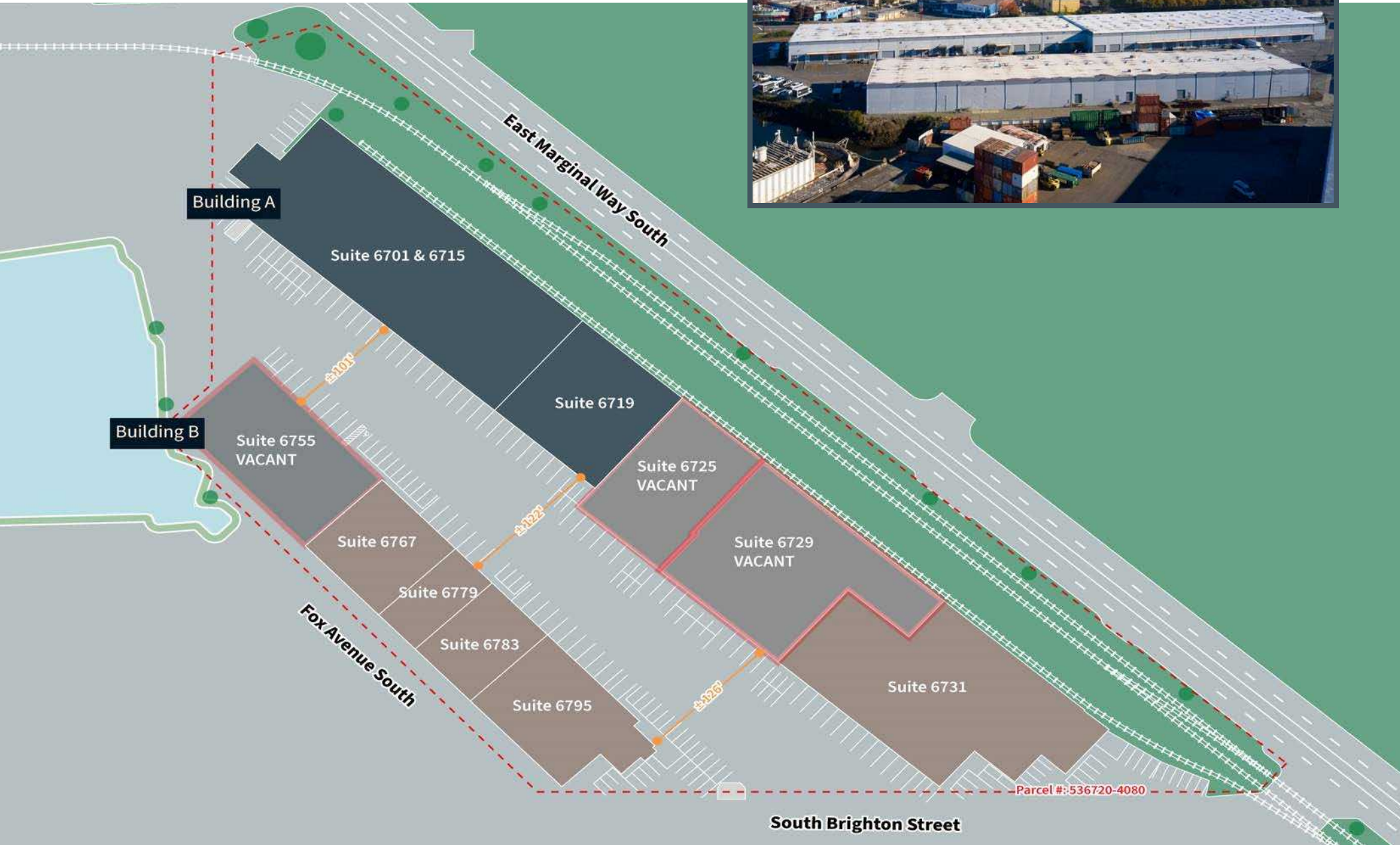


Grade-level
loading

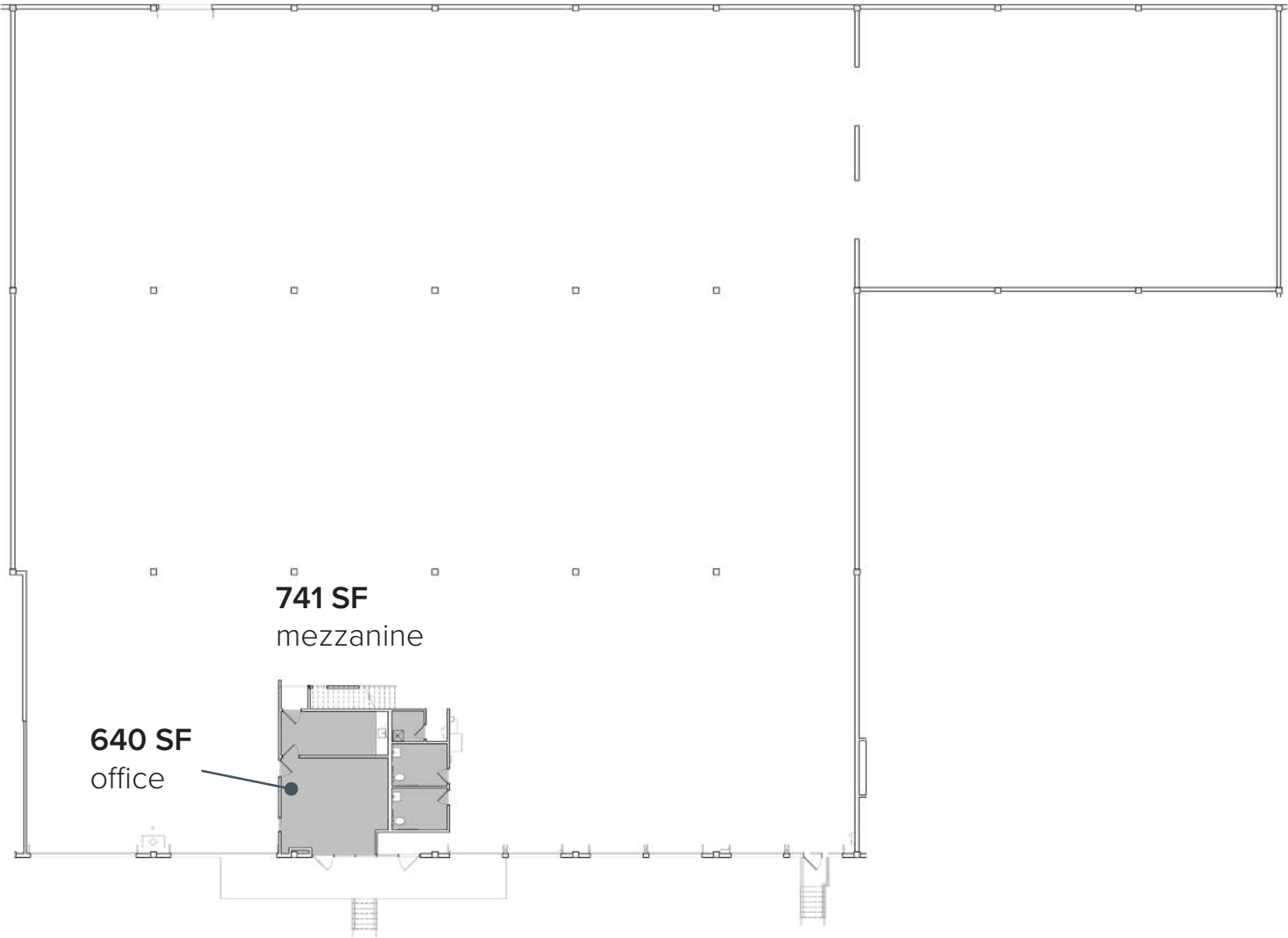


On-site
parking stalls

SITE PLAN



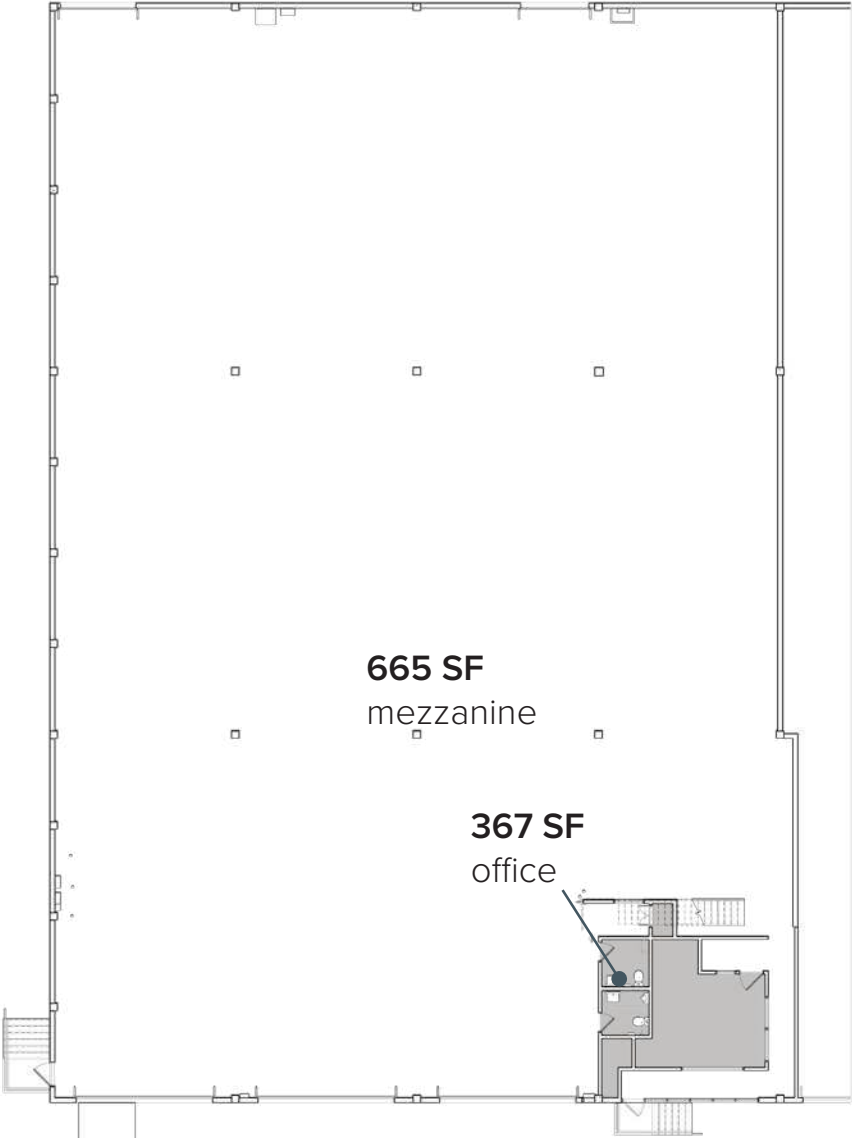
SUITE 6729



25,060 SF
shell

8 Dock
positions

SUITE 6725



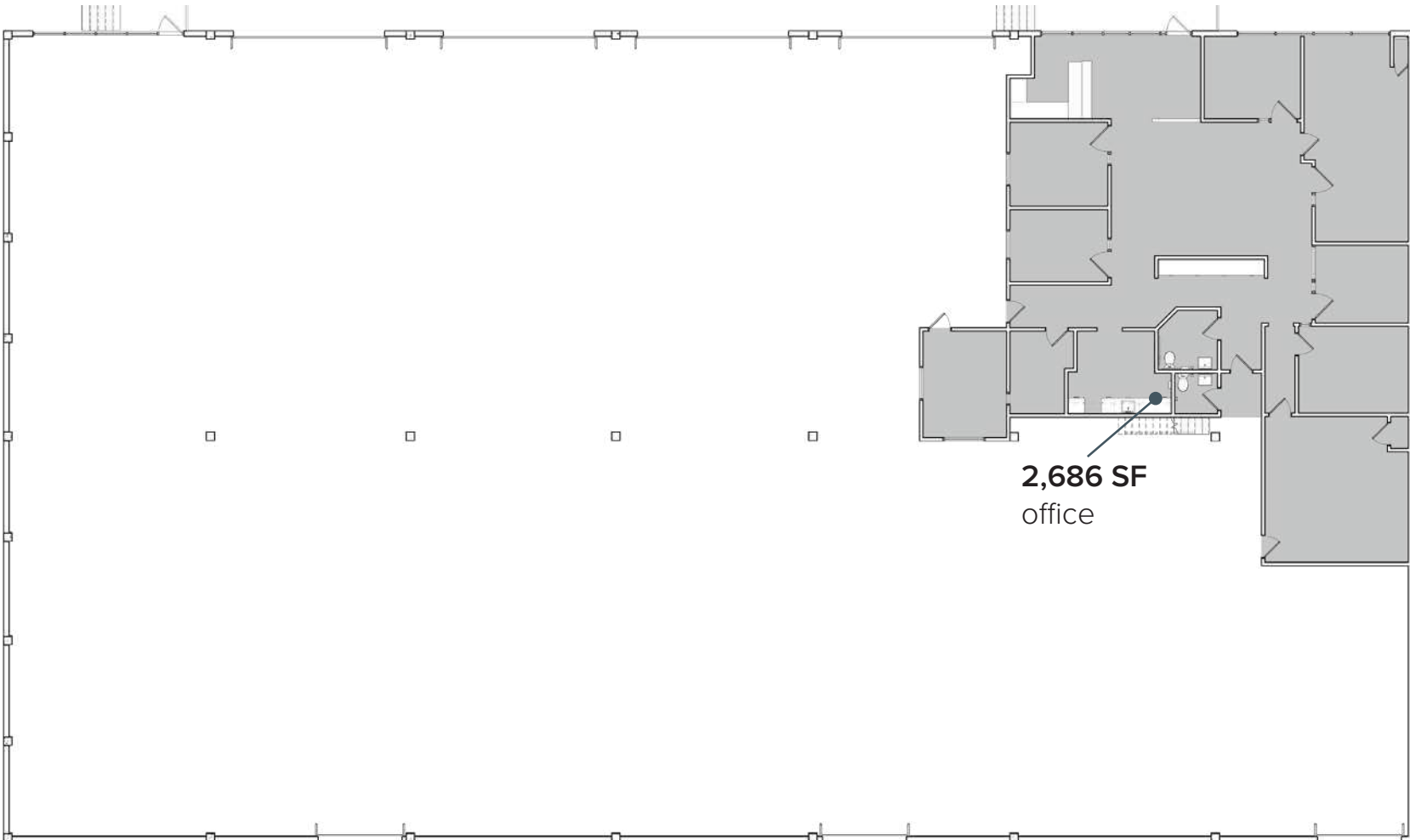
665 SF
mezzanine

367 SF
office

14,790 SF
shell

4 Dock
positions
1 pony dock / 1 ramp door

SUITE 6755



17,420 SF
shell

8 Dock
positions

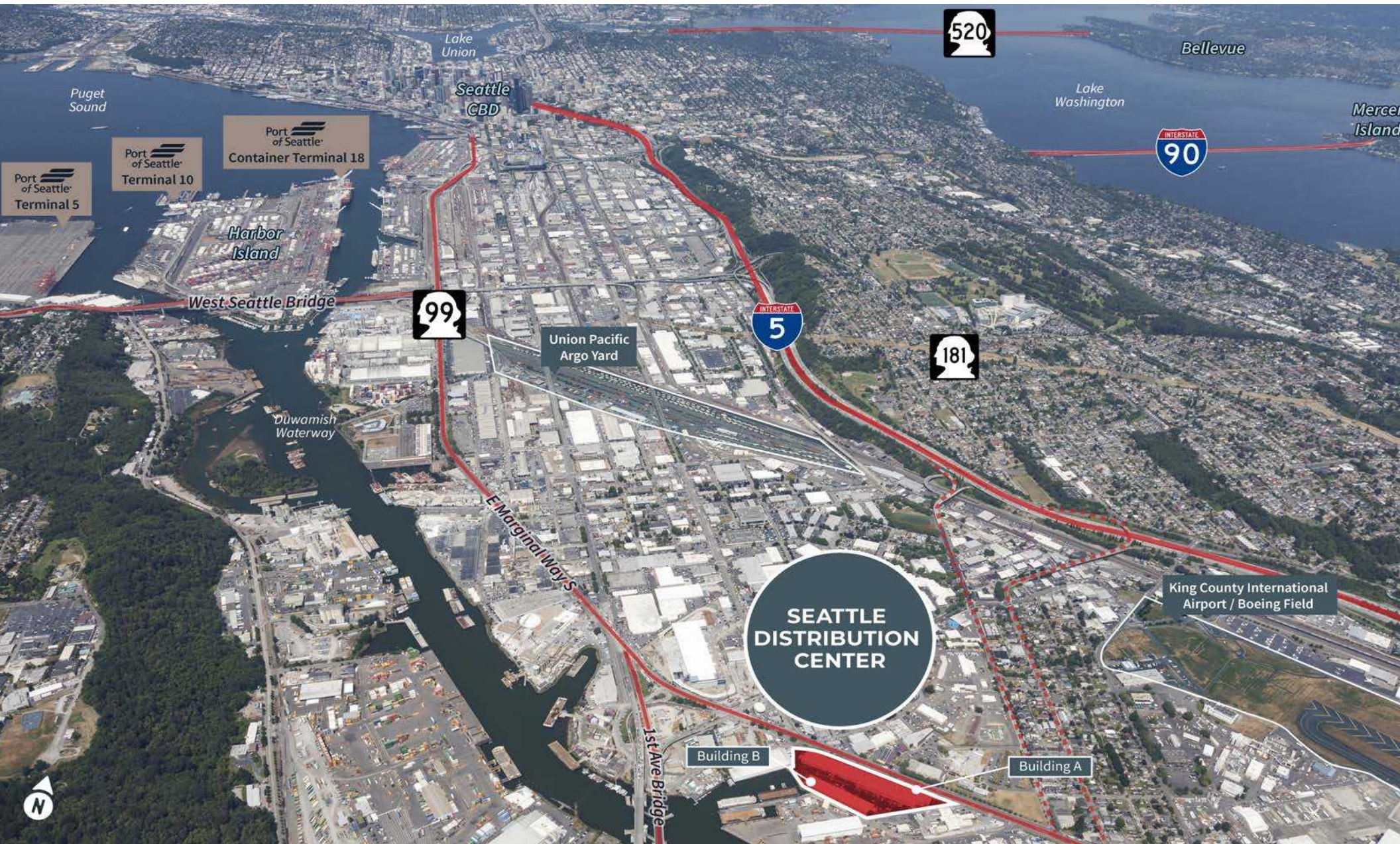
PRIME LOCATION

11 minutes
SeaTac Airport

5 minutes
Port of Seattle

14 minutes
Downtown Seattle

20 minutes
Downtown Bellevue





FOR INFORMATION CONTACT:

David Cahill
+1 206 930 5599
david.cahill@jll.com

Chris Spofford
+1 425 890 6961
chris.spofford@jll.com

Connor Raffety
+1 206 437 1006
connor.raffety@jll.com



Although information has been obtained from sources deemed reliable, JLL does not make any guarantees, warranties or representations, express or implied, as to the completeness or accuracy as to the information contained herein. Any projections, opinions, assumptions or estimates used are for example only. There may be differences between projected and actual results, and those differences may be material. JLL does not accept any liability for any loss or damage suffered by any party resulting from reliance on this information. If the recipient of this information has signed a confidentiality agreement with JLL regarding this matter, this information is subject to the terms of that agreement.
©2024 Jones Lang LaSalle IP, Inc. All rights reserved