

7,363 SF Industrial/Commercial Building for Lease  
\$1.75/SF/Month NNN



925 NW 49th Street  
Seattle, WA 98107



# Property Details

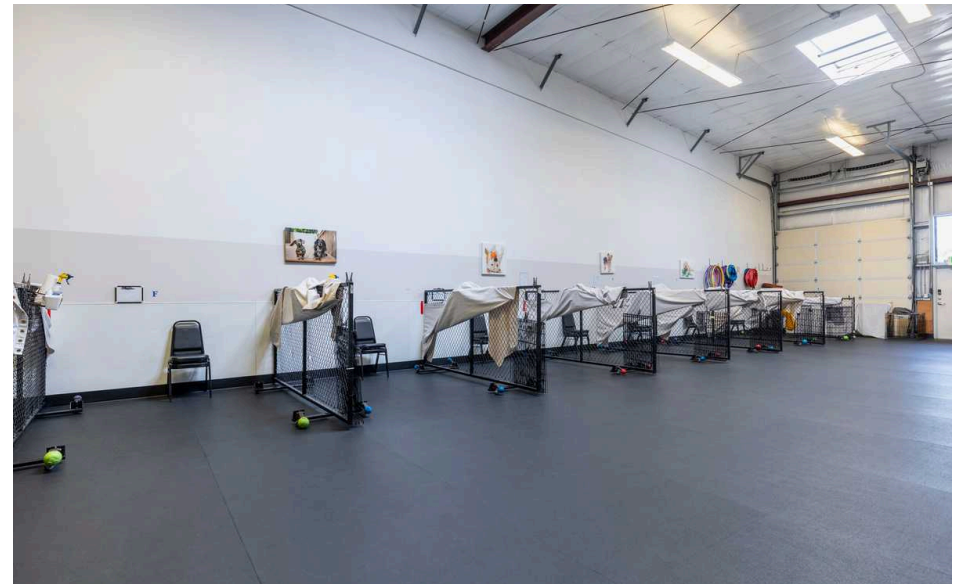
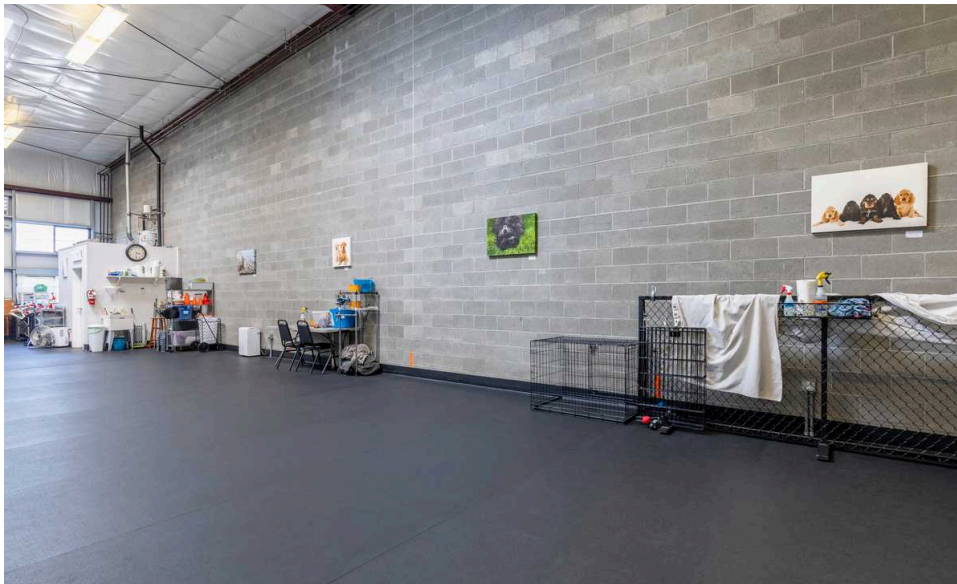
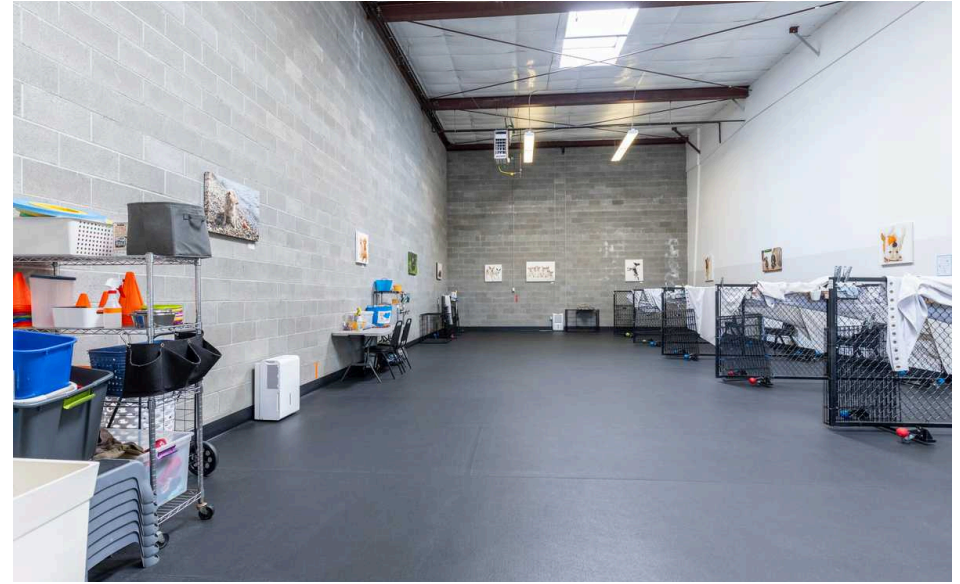
Address: 925 NW 49th St, Seattle, WA 98107  
Price: \$1.75/SF/Month NNN  
Est. NNN: \$4.25/SF/YR  
Building Size: 7,363 Square Feet  
Lot Size: 10,000 Square Feet  
Uncovered Parking: 4+ off-street parking spaces  
Year Built: 2011  
Zoning: UI U/45  
Features: 20 foot ceilings  
3 restrooms  
Clear span  
Available: Nov 1, 2024 - Please don't disturb  
Current Tenant





# Property Photos

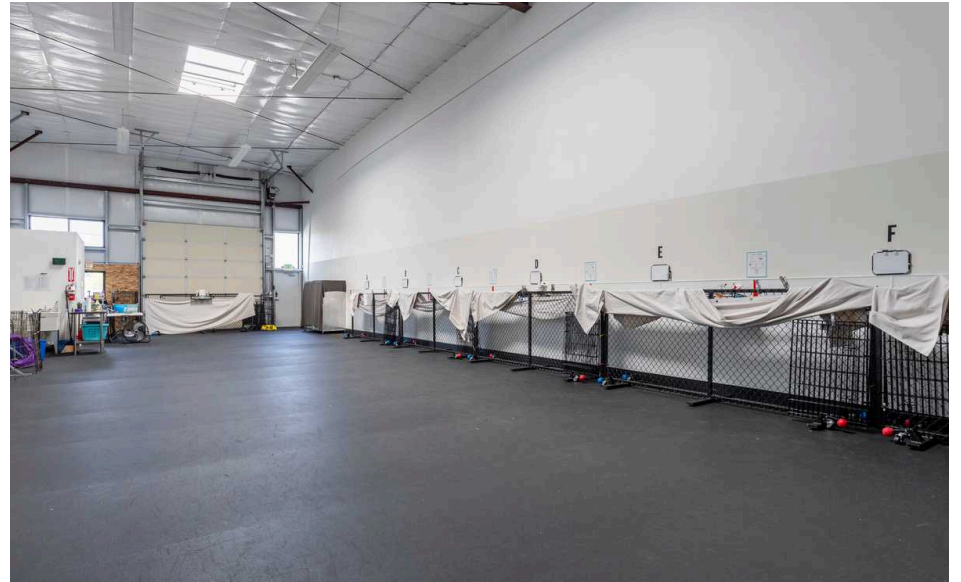
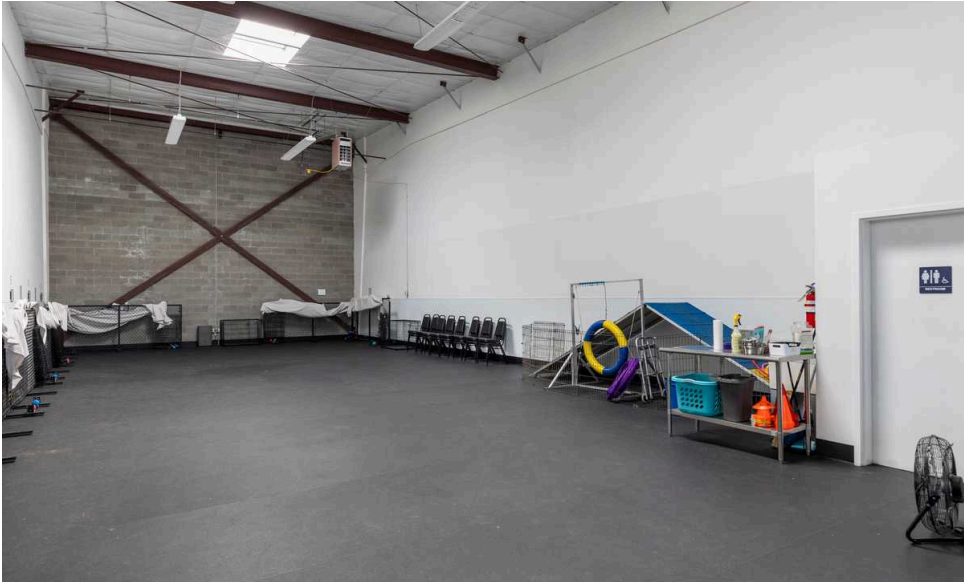
925 NW 49th St, Seattle, WA 98107  
Suite A-2, 146 Square Feet





# Property Photos

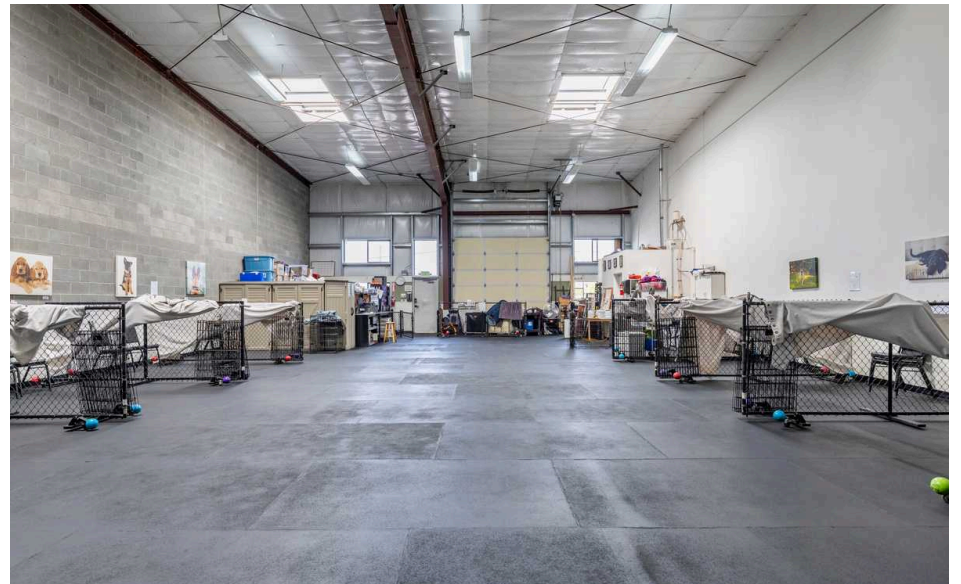
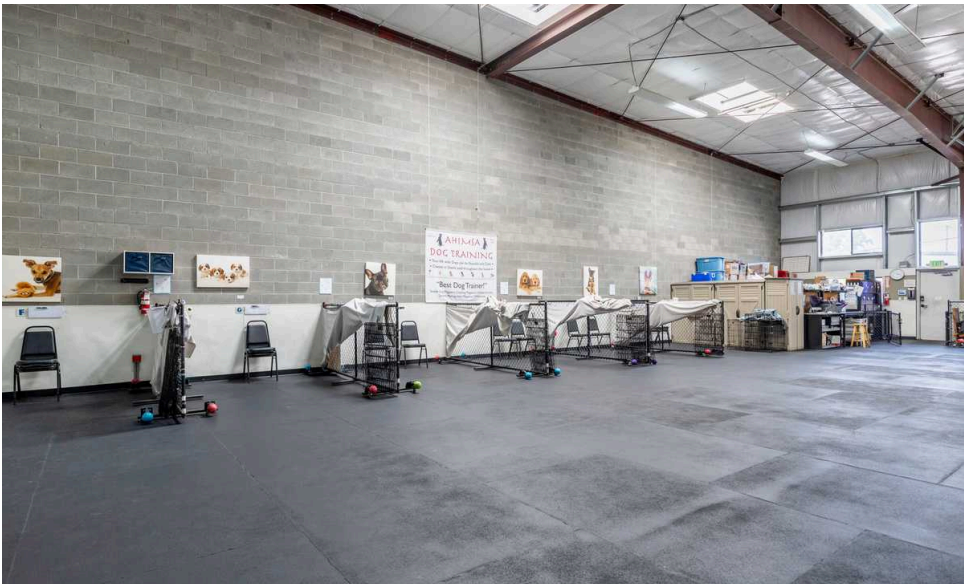
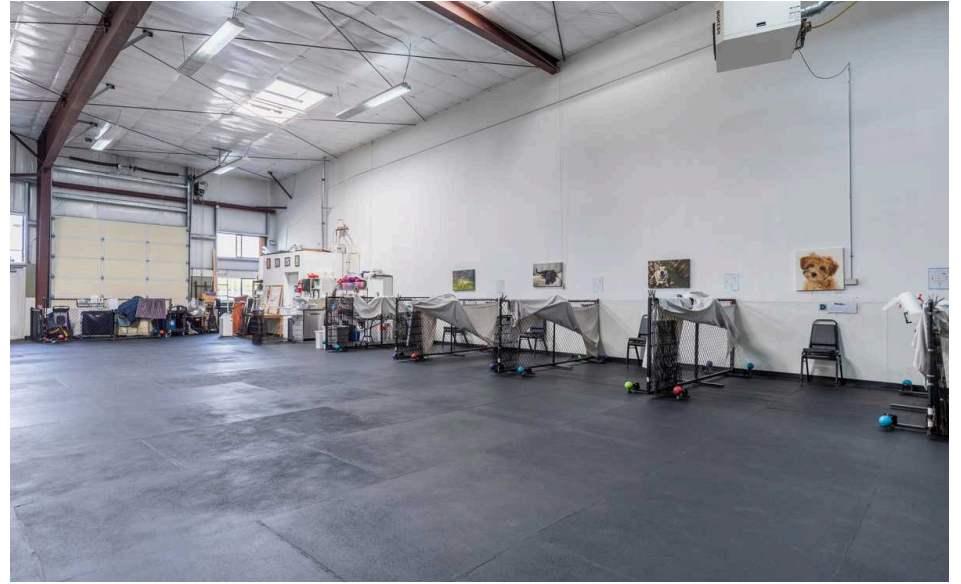
925 NW 49th St, Seattle, WA 98107  
Suite B-2, 109 Square Feet





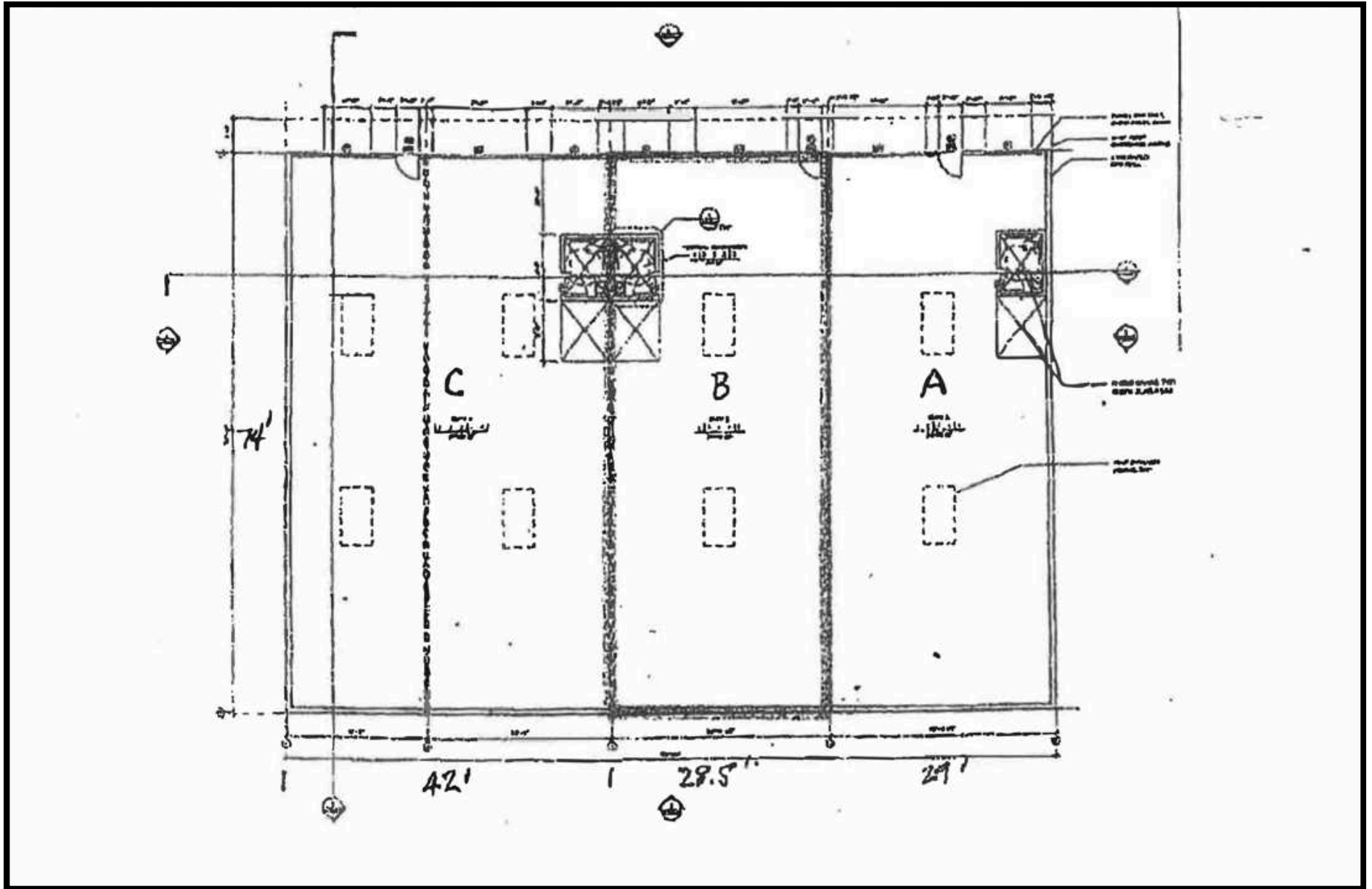
# Property Photos

925 NW 49th St, Seattle, WA 98107  
Suite C-3, 108 Square Feet



# Floor Plan

925 NW 49th St, Seattle, WA 98107







Exclusively Listed By:

Lauren Hendricks

Windermere RE Midtown Commercial

Phone: 206-999-9161

[LaurenHendricks@windermere.com](mailto:LaurenHendricks@windermere.com)

[www.CommercialSeattle.com](http://www.CommercialSeattle.com)



LAUREN  
HENDRICKS  
COMMERCIAL REALTOR