

3701 7TH AVE S

SEATTLE, WA

FOR LEASE

19,486 SF



NEWMARK

EVAN LUGAR
425.362.1403
evan.lugar@nrmk.com

JOSH SATTERLEE
425.362.1396
josh.satterlee@nrmk.com

PROPERTY OVERVIEW

Total Size
19,486 SF

Warehouse
13,994 SF

Available
Now

Access
I-5 and Hwy 512

Power
Heavy power
1000amps at 120/280v
*To be verified by tenant

Loading
2 Dock High Doors
1 Grade Level Door

Office (2nd Floor)
2,308 SF

Showroom (1st floor)
2,452 SF

Mezzanine Storage
732 SF

Insulated
Fully

Parking
Ample

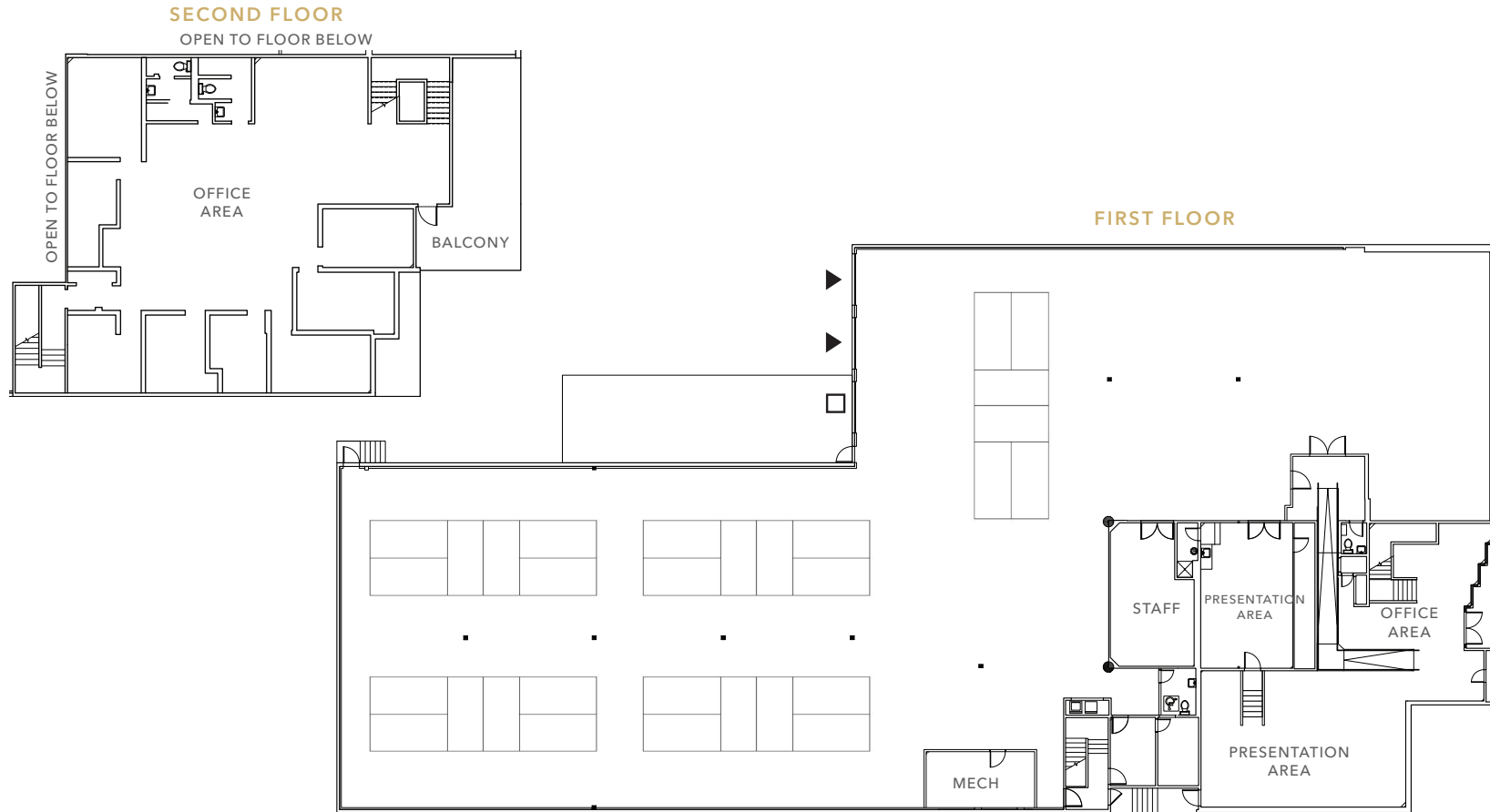
Uses
Allows for Retail

Building Upgrades
Underway

2nd Fl Office	2,308 SF	\$1.20	\$2,769.60
Showroom	2,452 SF	\$1.20	\$2,942.40
Mezzanine	738 SF	\$1.00	\$738.00
Footprint	16,446 SF	\$1.25	\$20,557.50
Total Rent			\$20,557.50
Blended	19,486 SF	\$1.39	\$27,007.50

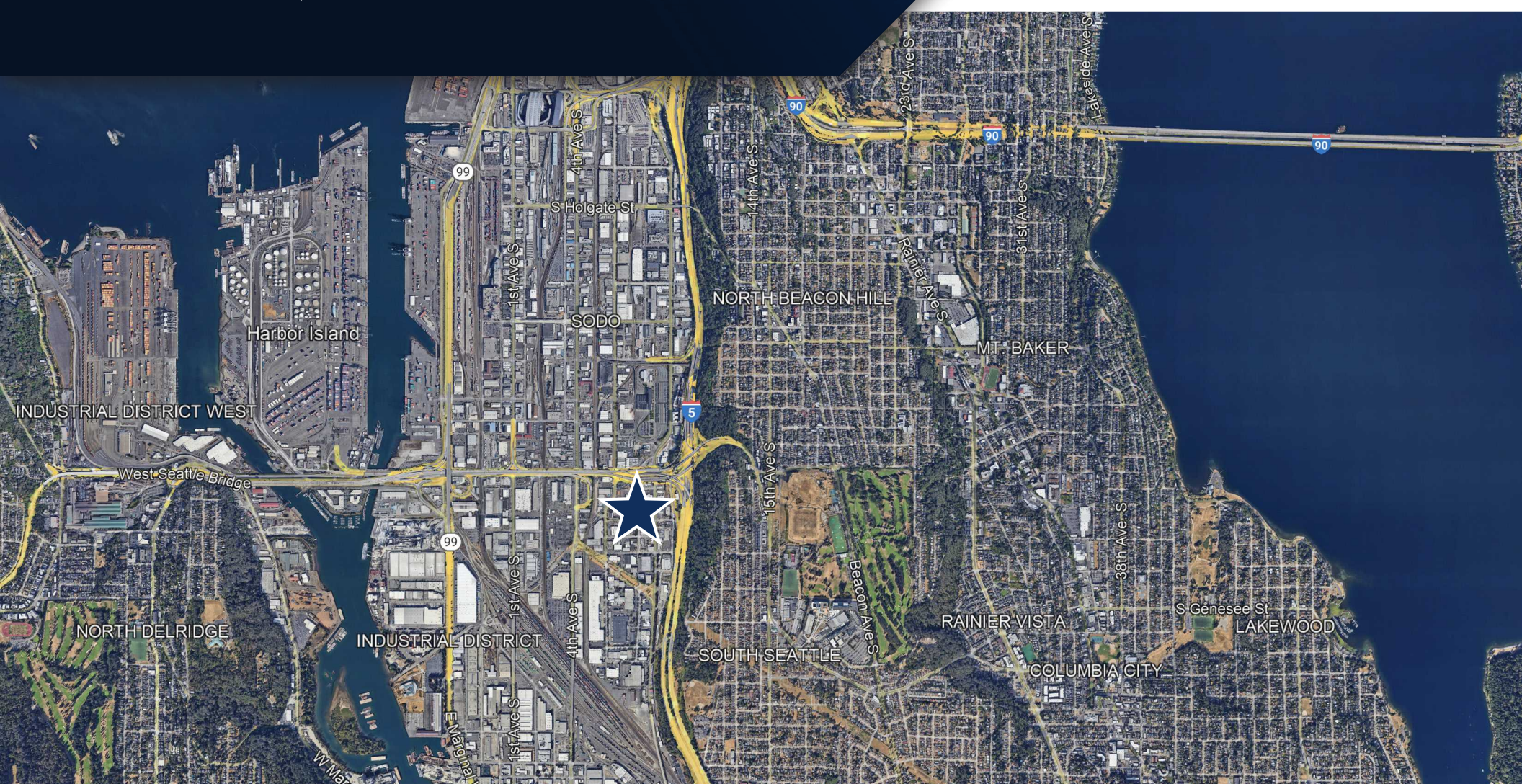


FLOOR PLAN



3701 7TH AVE S

SEATTLE, WA



NEWMARK

The distributor of this communication is performing acts for which a real estate license is required. The information contained herein has been obtained from sources deemed reliable but has not been verified and no guarantee, warranty or representation, either express or implied, is made with respect to such information. Terms of sale or lease and availability are subject to change or withdrawal without notice.