

NORTH CREEK BUILDING I



FOR LEASE

11714 NORTH CREEK PARKWAY NORTH, BOTHELL

FOR LEASING INFORMATION CONTACT:

GABE SMITH
gabe.smith@jll.com
+1 206 450 0898

BRENT JACKSON
brent.jackson@jll.com
+1 425 449 2715









ALEC GOODWIN
alec.goodwin@jll.com
+1 424 421 9245



NORTH CREEK BUILDING I



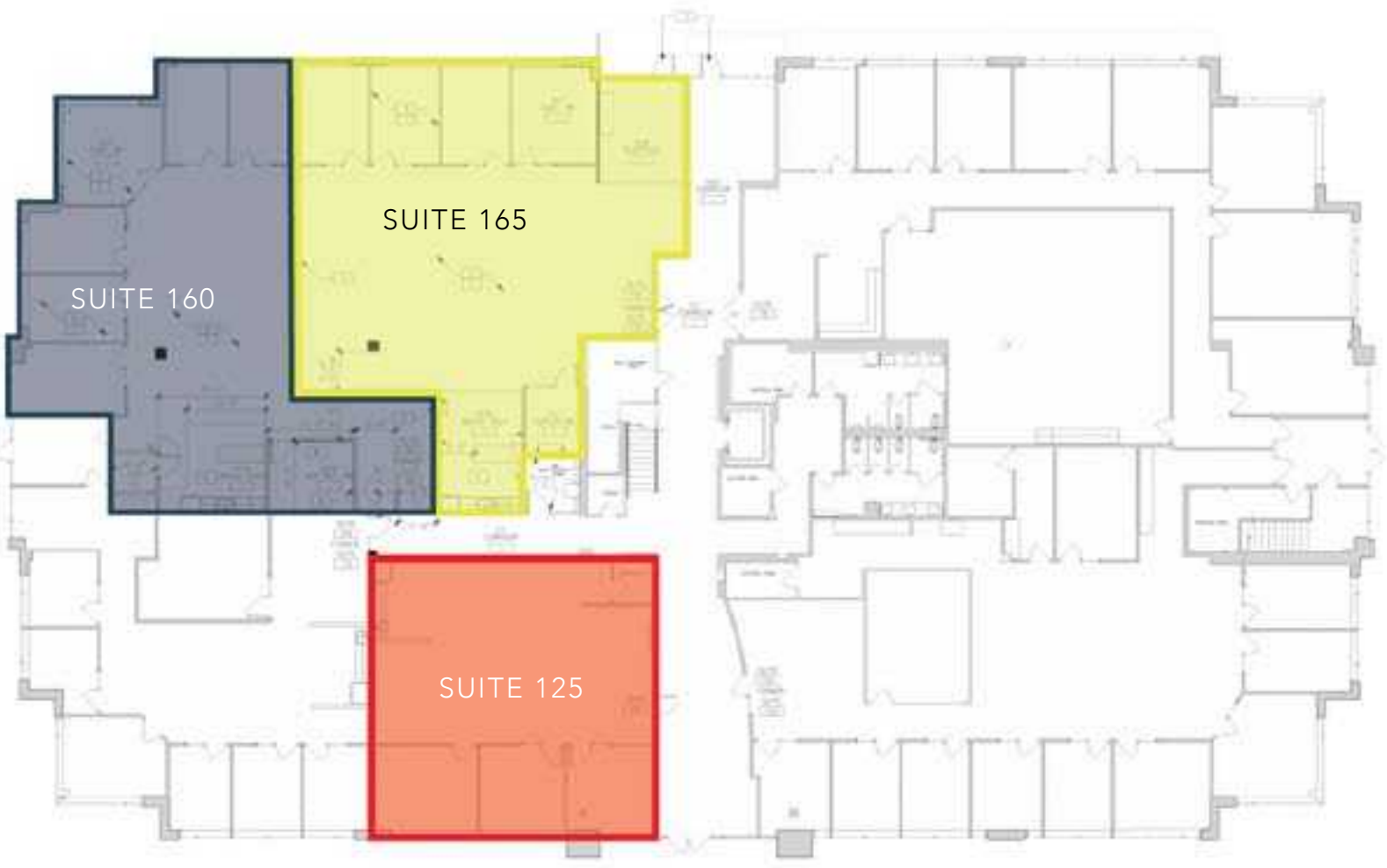
BUILDING FEATURES:

 <p>Two story 39,082 SF Class A office building</p>	 <p>Immediate access to I-405 and Metro bus services</p>	 <p>Near restaurants, retail, childcare and hotel accommodations</p>	 <p>Excellent data connectivity with Comcast and Ziplly</p>
 <p>Located in a park-like campus setting surrounded by picturesque jogging and parcourse trails</p>	 <p>Corporate neighbors include AT&T, T-Mobile, Google, State Farm and Puget Sound Energy</p>	 <p>3.5/1,000 parking ratio</p>	 <p>Responsive local management team</p>

UPCOMING VACANCY:

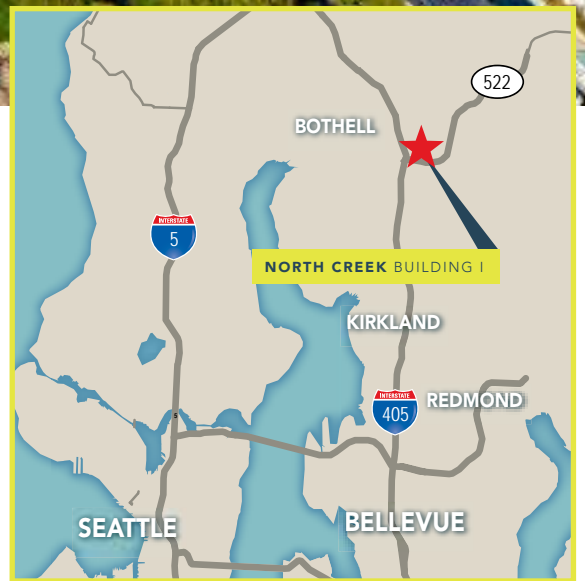
FLOOR	SUITE	RSF	Availability	Comments
1	125	1,717 RSF	Move in Ready	New spec office space, lobby exposure, 3 offices, open area, 9' ceilings, and kitchenette
1	160	3,344 RSF	November 2024	5 offices, large and small conference rooms, IT server room, break area, reception, and cubicle area
1	165	2,871 RSF	November 2024	3 offices, conference room, reception, cubicle area, IT server room, and break area

NORTH CREEK BUILDING I: FLOORPLAN





NORTH CREEK BUILDING I



GABE SMITH
gabe.smith@jll.com
+1 206 450 0898

BRENT JACKSON
brent.jackson@jll.com
+1 425 449 2715

ALEC GOODWIN
alec.goodwin@jll.com
+1 424 421 9245