



FOR LEASE

Medical / Office Building

3025 Rucker Avenue, Everett, WA

*Medical office in the heart of downtown
Everett with easy access to highway.*

PROPERTY HIGHLIGHTS

- + Heart of downtown Everett
- + Two-floor above-ground secured parking
- + Easy access to I-5
- + Brand new roof
- + Electrical and plumbing upgrades
- + Onsite security cameras
- + Elevator connecting all three levels
- + Available now

MATT LE

NAI Puget Sound Properties
+1 425 586 5647
mle@nai-psp.com

JOHN POWERS

NAI Black
+1 509 622 3563
jpowers@naiblack.com



THE INFORMATION CONTAINED HEREIN HAS BEEN GIVEN TO US BY THE OWNER OF THE PROPERTY OR OTHER SOURCES WE DEEM RELIABLE, WE HAVE NO REASON TO DOUBT ITS ACCURACY, BUT WE DO NOT GUARANTEE IT. ALL INFORMATION SHOULD BE VERIFIED PRIOR TO PURCHASE OR LEASE.

TOTAL SF

10,454 SF

PARKING STALLS

43 W/ EV CHARGING PORTS

PRICE/SF

\$24.00

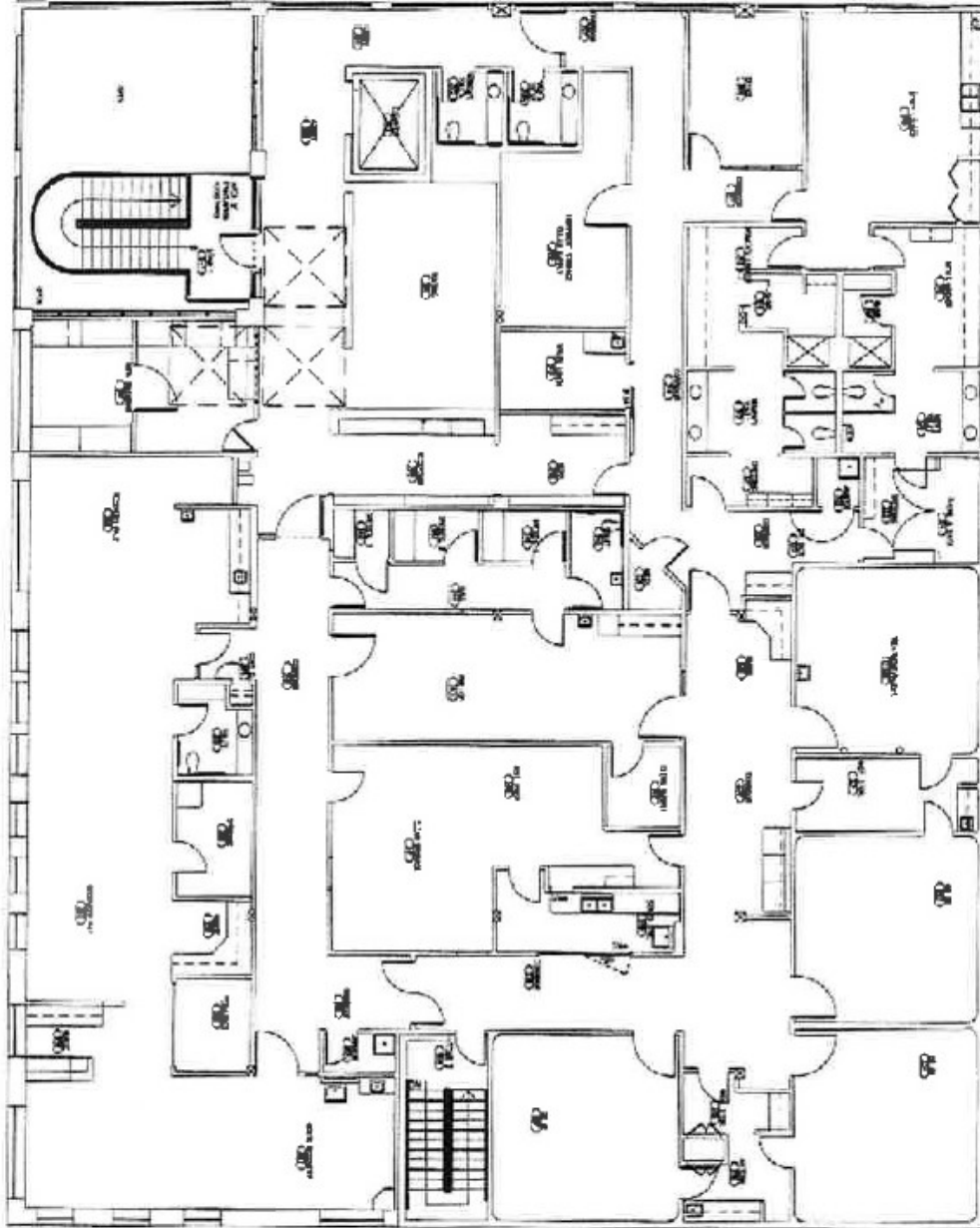
TYPE

Gross



nai-psp.com

Floor Plan



MATT LE

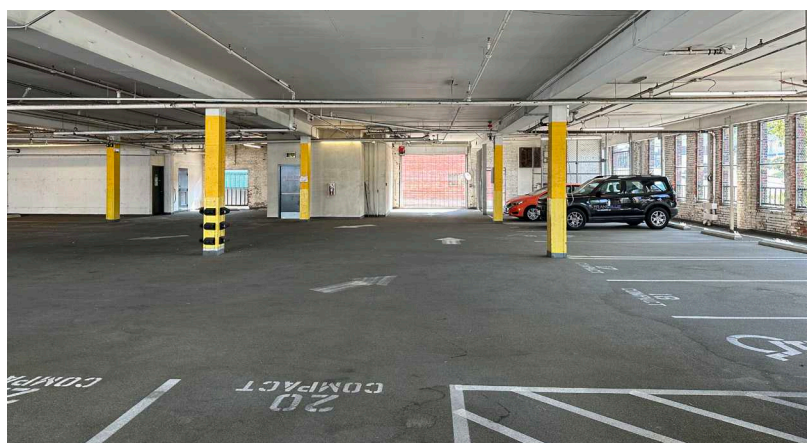
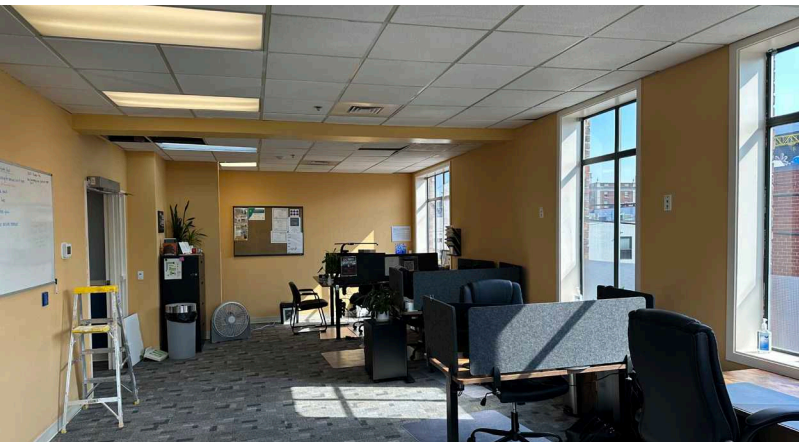
NAI Puget Sound Properties
+1 425 586 5647
mle@nai-psi.com

JOHN POWERS

NAI Black
+1 509 622 3563
jpowers@naiblack.com



Beautifully restored building in the heart of Everett's business and retail district.



MATT LE

NAI Puget Sound Properties
+1 425 586 5647
mle@nai-psp.com

JOHN POWERS

NAI Black
+1 509 622 3563
jpowers@naiblack.com



Demographics



3025 RUCKER AVENUE, EVERETT, WA

	1 MILE	3 MILES	5 MILES
Population	14,289	55,789	119,758
2029 Population	15,721	60,723	128,646
Daytime Population	33,378	76,741	50,076
Households	7,081	23,392	47,155
Median Age	39.1	39.0	38.3
Median HH Income	\$67,860	\$83,076	\$86,071

91
WALK SCORE

76
BIKE SCORE

56
TRANSIT SCORE

MATT LE
NAI Puget Sound Proerties
+1 425 586 5647
mle@nai-psp.com

JOHN POWERS
NAI Black
+1 509 622 3563
jpowers@naiblack.com

