

FOR LEASE

# TACOMA IOS YARD

*49,223 SF Yard or Built-to-Suit  
for Lease in Tacoma*

2200 112TH ST E  
TACOMA, WA 98445

SUBJECT  
PROPERTY

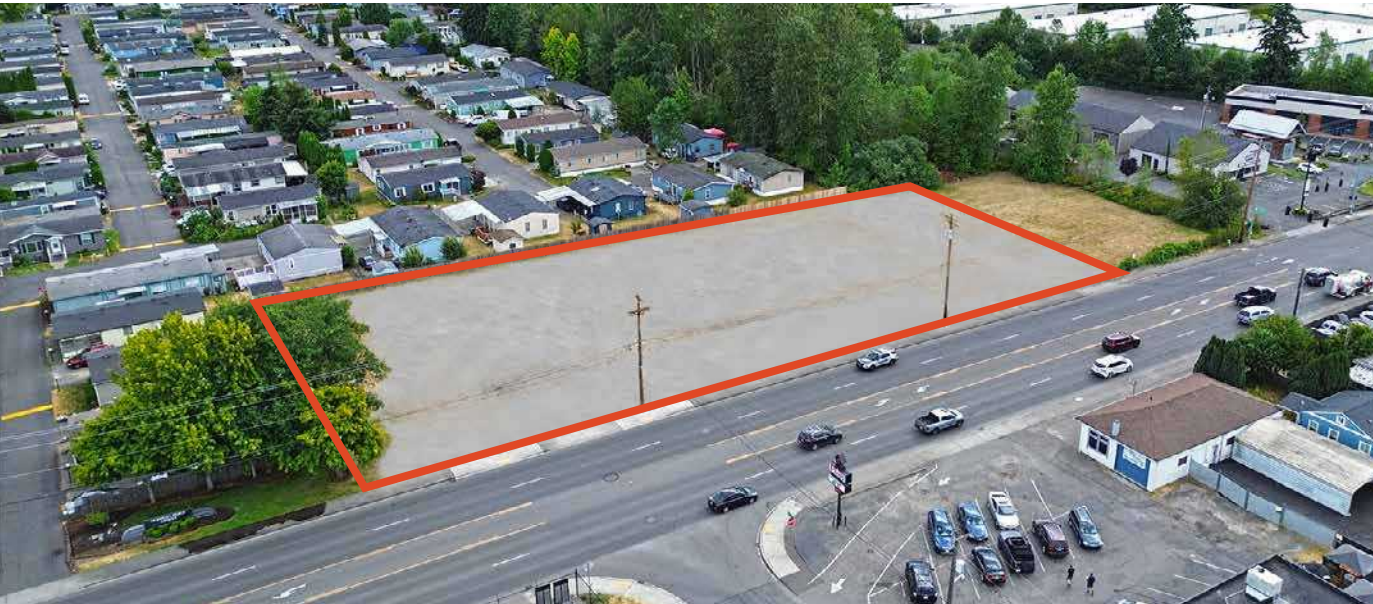
112TH ST E

KIDDER.COM

km Kidder  
Mathews



FOR LEASE

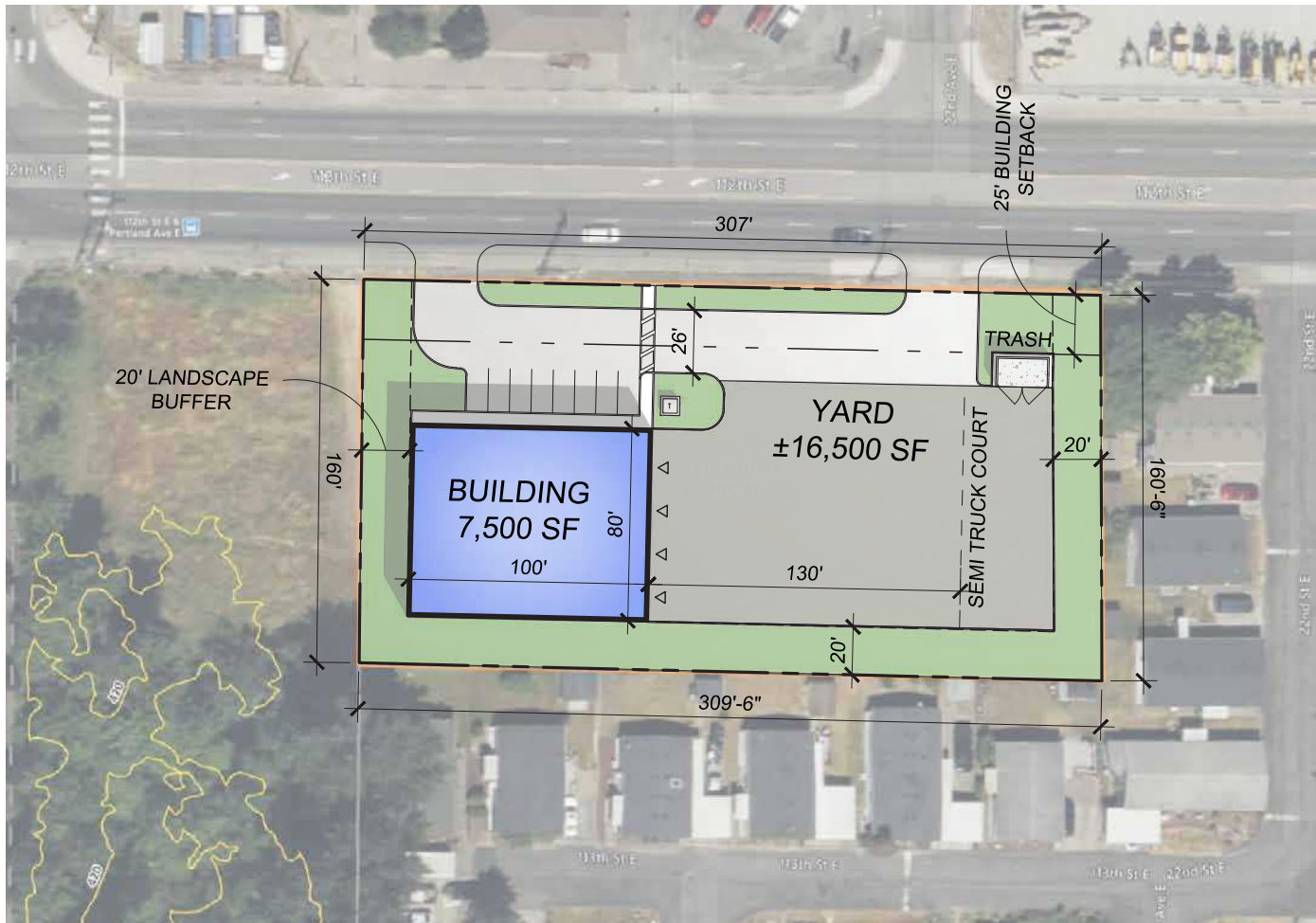


## Property Features

LAND AC	1.13
LAND SF	49,223
ZONING	Employment Corridor
ZONING MUNICIPALITY	Pierce Mid-County Community Plan
MISC. FEATURES	<ul style="list-style-type: none"><li>• Fenced and graveled</li><li>• Immediate SR-512 Access</li><li>• Close to Port of Tacoma and I-5</li></ul>
MONTHLY RATE	\$9,500/month + NNN

FOR LEASE

# OPTION 1



*7,500 SF*

BUILDING SF

*750 SF*

OFFICE SF

*16,500 SF*

YARD SF

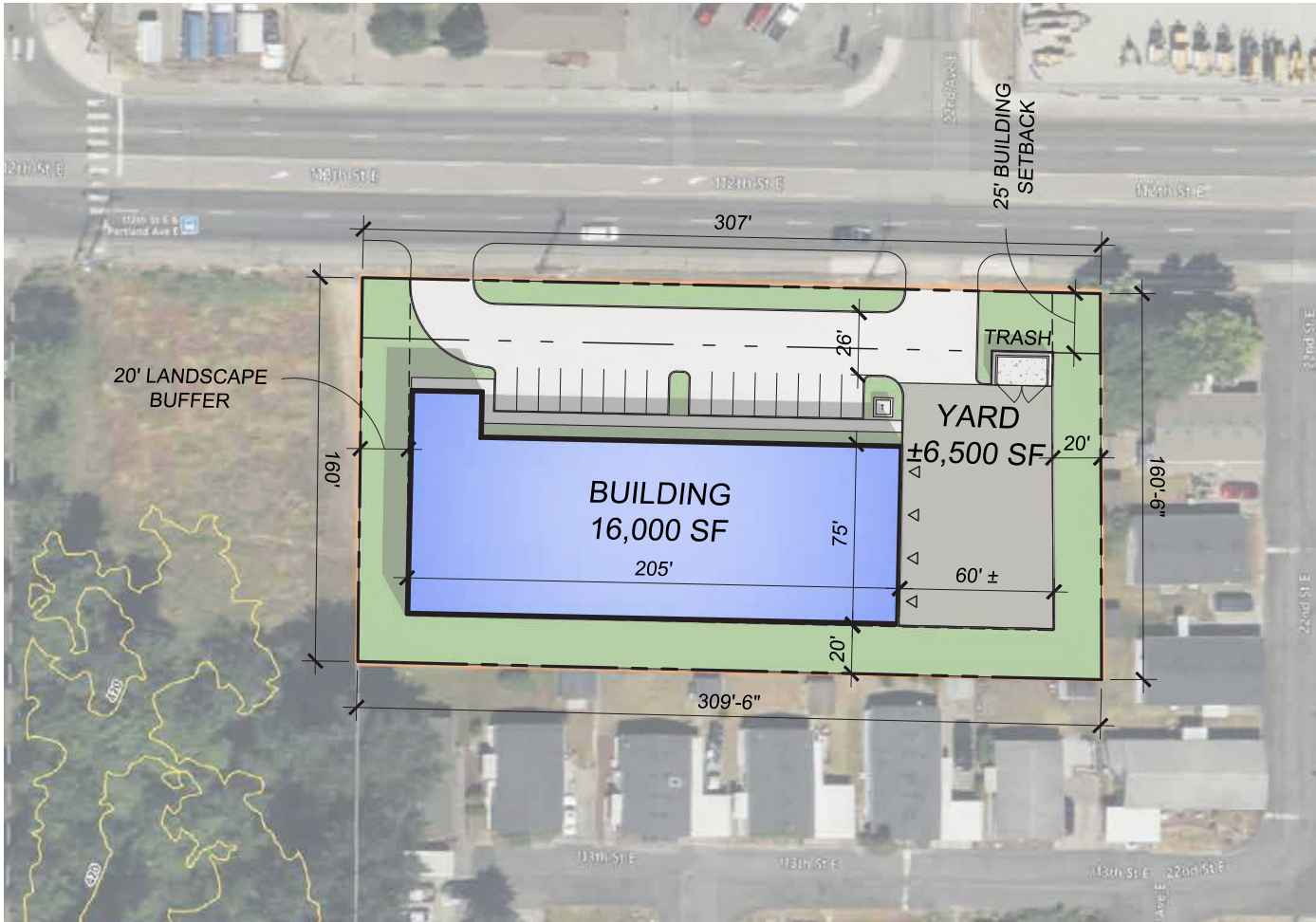
*4*

GRADE LEVEL DOORS



FOR LEASE

## OPTION 2



*14,400 SF*

BUILDING SF

*1,600 SF*

OFFICE SF

*6,500 SF*

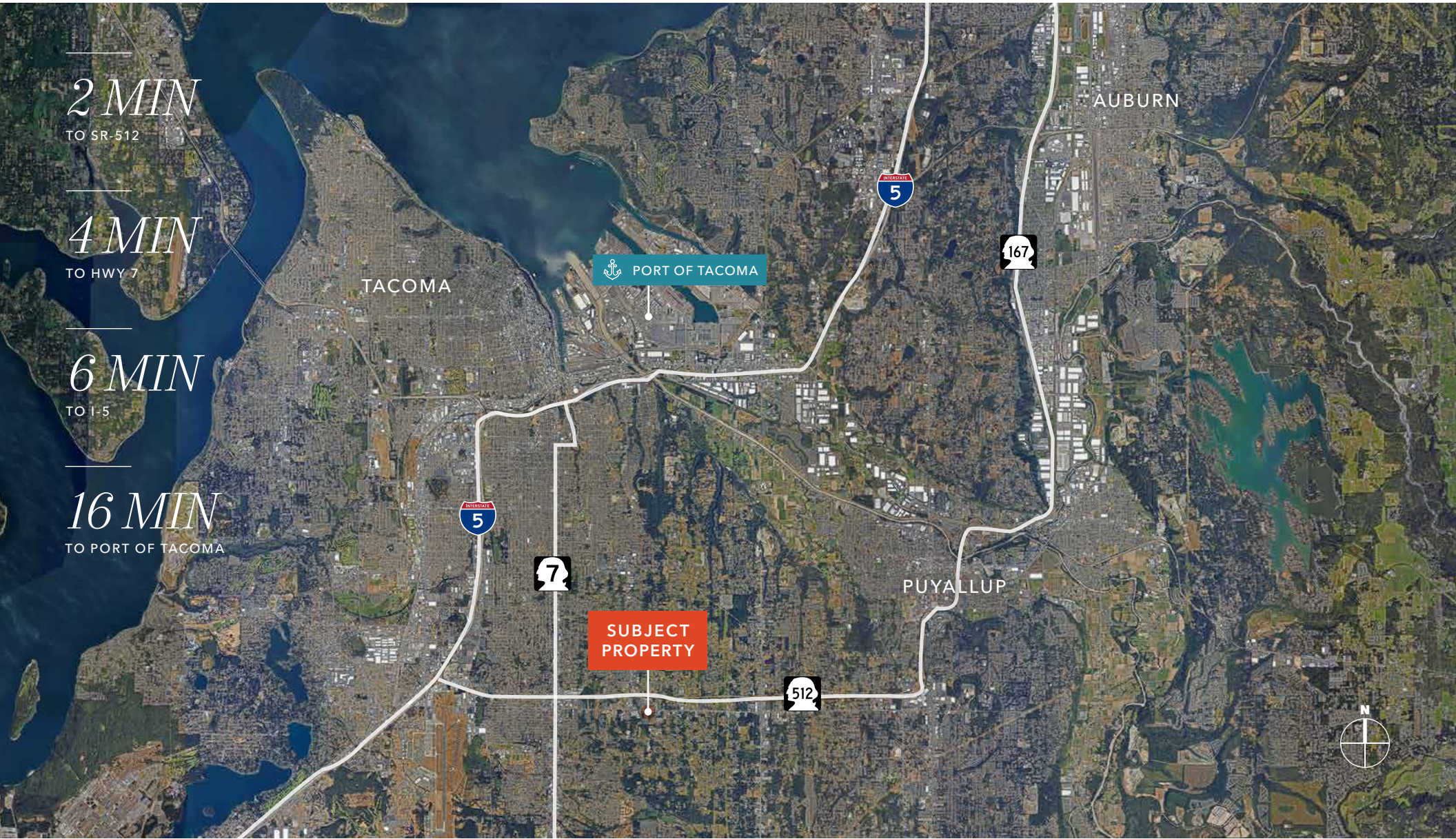
YARD SF

*4*

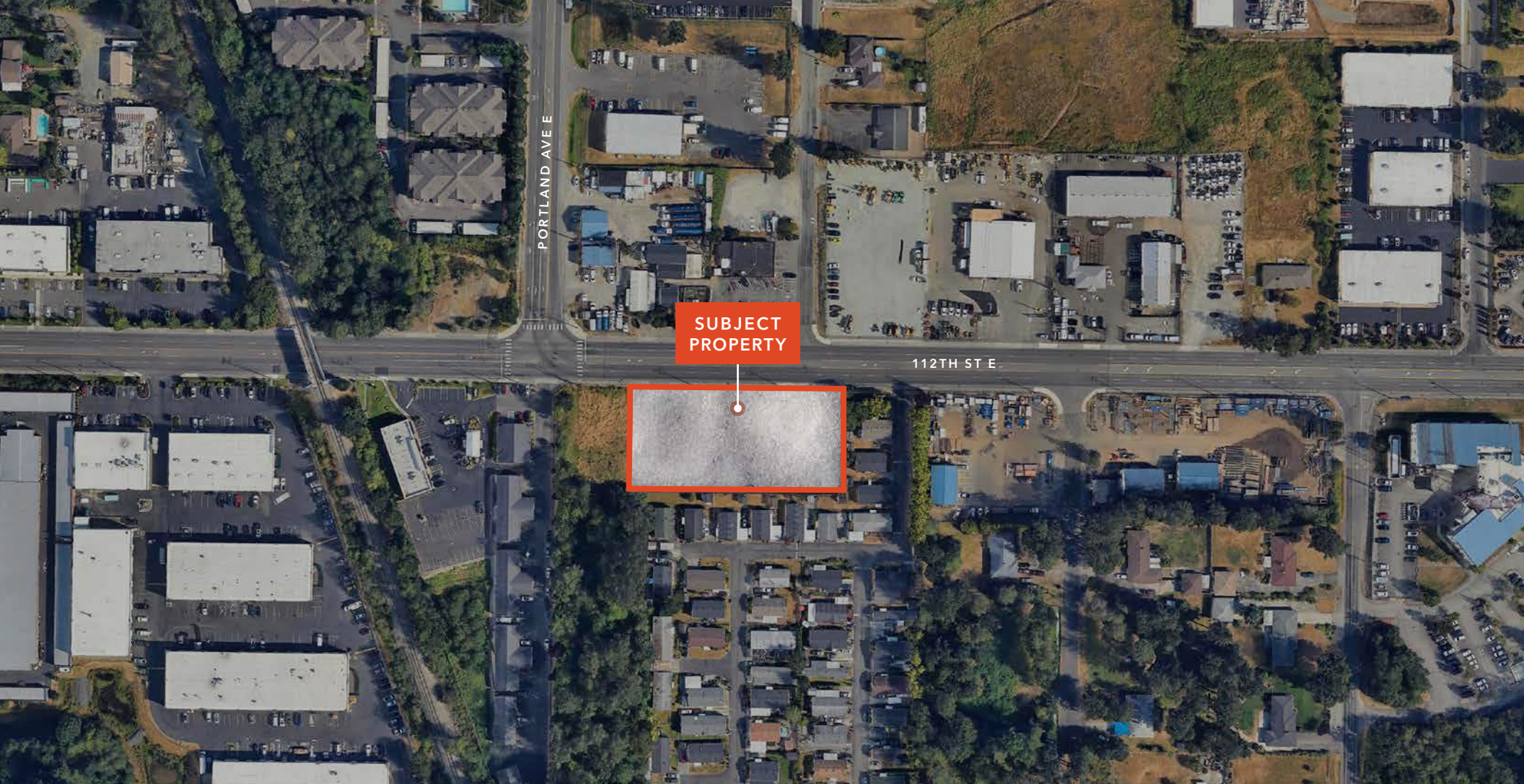
GRADE LEVEL DOORS



FOR LEASE







SUBJECT  
PROPERTY

PORTLAND AVE E

112TH ST E

## 2200 112TH ST E

*For more information on  
this property, please contact*

MATT MCLENNAN

253.722.1458

matt.mclennan@kidder.com

[MCCLENNANINDUSTRIAL.COM](http://MCCLENNANINDUSTRIAL.COM)

[KIDDER.COM](http://KIDDER.COM)

This information supplied herein is from sources we deem reliable. It is provided without any representation, warranty, or guarantee, expressed or implied as to its accuracy. Prospective Buyer or Tenant should conduct an independent investigation and verification of all matters deemed to be material, including, but not limited to, statements of income and expenses. Consult your attorney, accountant, or other professional advisor. All Kidder Mathews designs are the sole property of Kidder Mathews. Branded materials and layouts are not authorized for use by any other firm or person.

