

TWELFTH PLACE

1215 120TH AVE NE, BELLEVUE, WA 98005

SHORT TERM OFFICE SPACE AVAILABLE

SUITES	LOCATION	SQUARE FOOTAGE	AVAILABILITY
101	First Floor	2,123 SF	Available Now
103	First Floor	1,277 SF	Available Now
105	First Floor	999 SF	Available Now
110	First Floor	1,446 SF	Available Now
202	Second Floor	1,452 SF	Available Now
204	Second Floor	2,091 SF	Available Now
205	Second Floor	1,257 SF	Available Now
206	Second Floor	1,009 SF	Available Now



NEWMARK

JOE LYNCH

Executive Managing Director
425.362.1399
joe.lynych@nmrk.com

DAN HARDEN

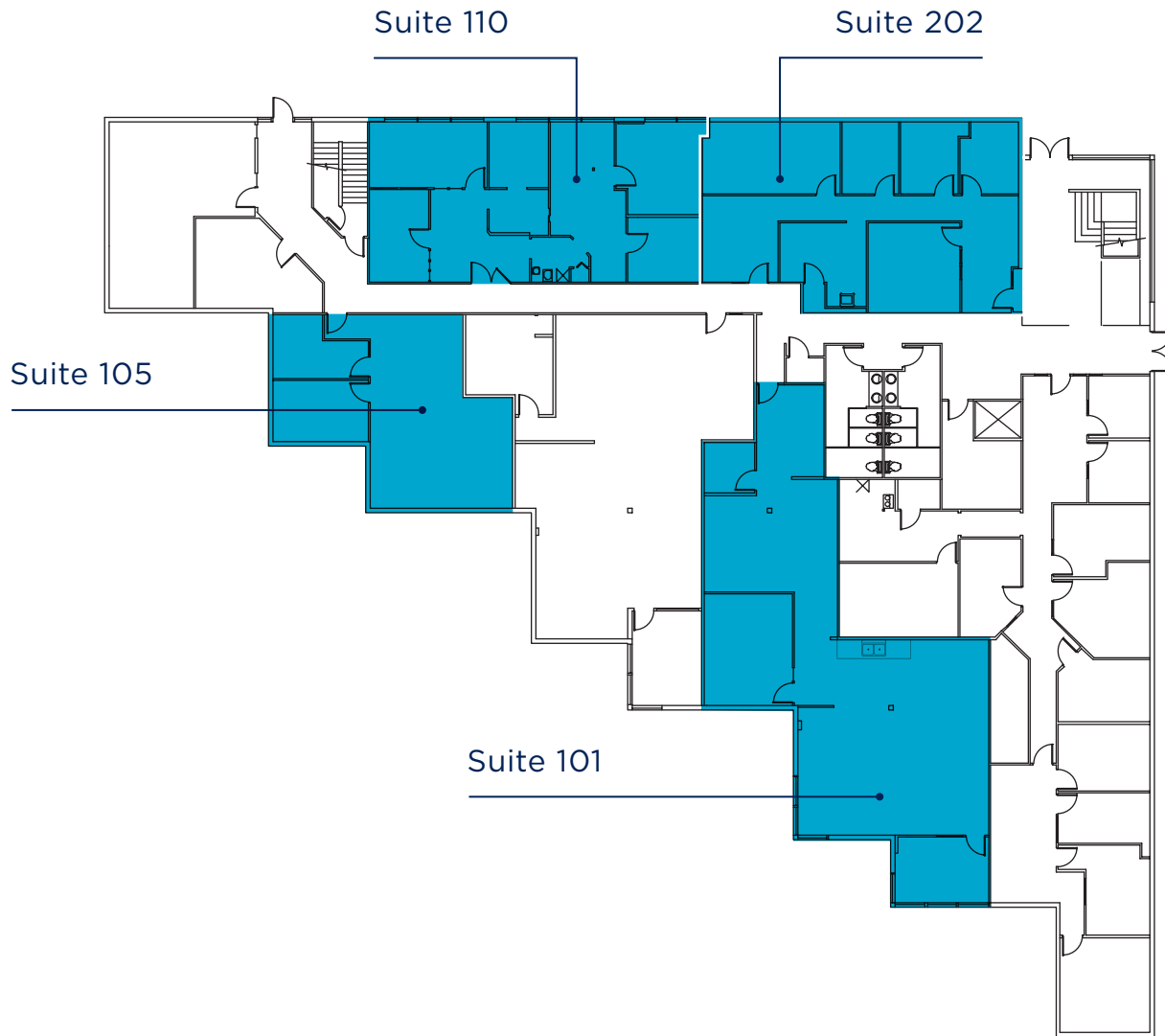
Senior Managing Director
425.362.1393
dan.harden@nmrk.com

EXTERIOR VIEWS

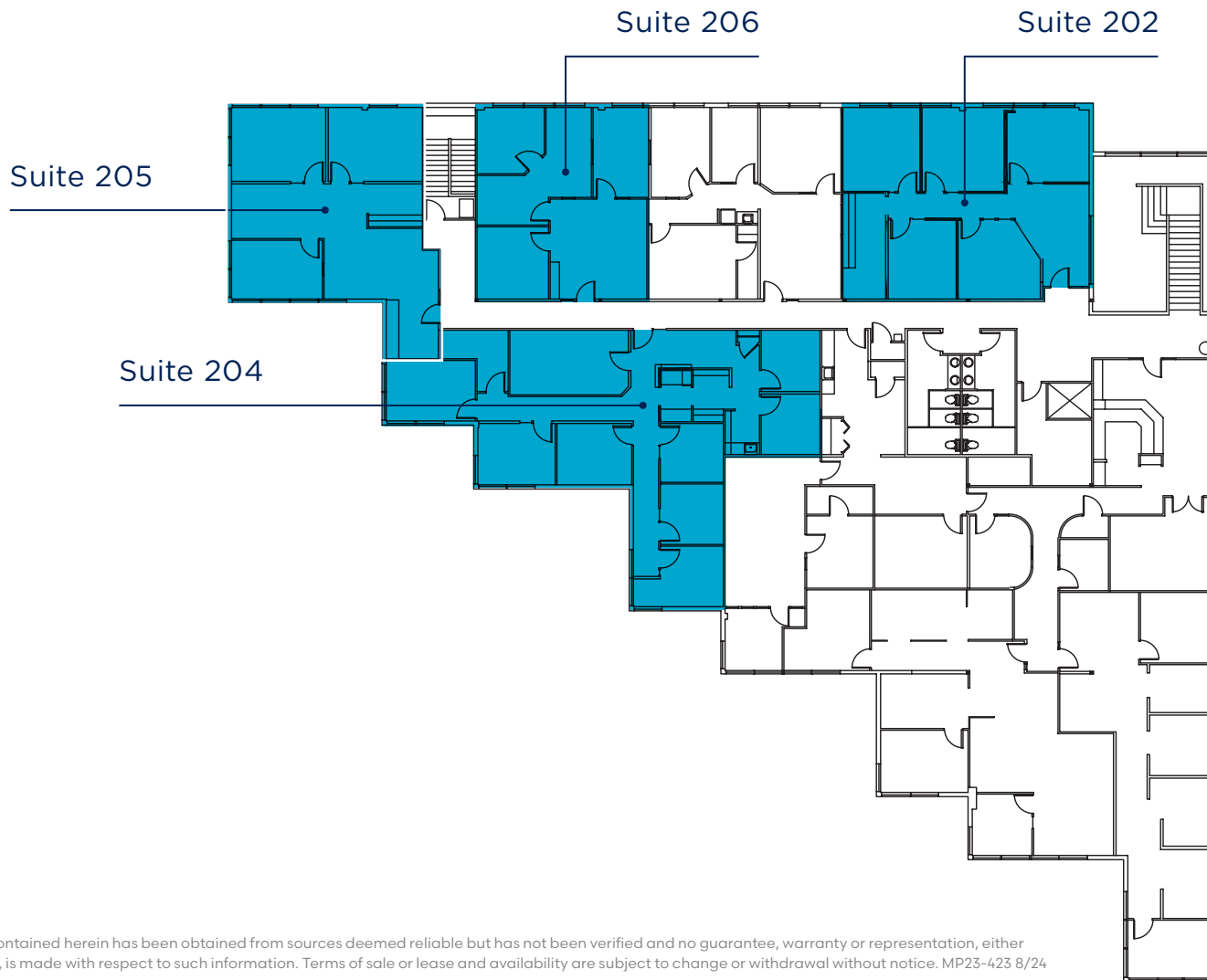
1215 120TH AVE NE, BELLEVUE, WA 98005



SUITES	LOCATION	SQUARE FOOTAGE	AVAILABILITY
101	First Floor	2,123 SF	Available Now
103	First Floor	1,277 SF	Available Now
105	First Floor	999 SF	Available Now
110	First Floor	1,446 SF	Available Now



SUITES	LOCATION	SQUARE FOOTAGE	AVAILABILITY
202	Second Floor	1,452 SF	Available Now
204	Second Floor	2,091 SF	Available Now
205	Second Floor	1,257 SF	Available Now
206	Second Floor	1,009 SF	Available Now



The information contained herein has been obtained from sources deemed reliable but has not been verified and no guarantee, warranty or representation, either express or implied, is made with respect to such information. Terms of sale or lease and availability are subject to change or withdrawal without notice. MP23-423 8/24