

FOR LEASE

10914 25th Ave E
Tacoma, WA 98445



10914 25TH AVE E | WAREHOUSE

First Western Properties—Tacoma Inc. | 253.472.0404
6402 Tacoma Mall Blvd, Tacoma, WA 98409 | fwp-inc.com

10914 25TH AVE EAST

4,992 SF WITH ON-SITE YARD SPACE
» AVAILABLE Q2 - 2025

- Under Construction Now
- NEW Industrial Warehouse building for lease at 112th and Portland Ave, it will be the 3rd building of a small industrial park.
- Close access to Highway 512 - just minutes from Lakewood, Puyallup and Joint Base Lewis-McChord.
- Asking rate - \$7,500 month, semi gross
- Tenant pays, separately metered utilities.



Population



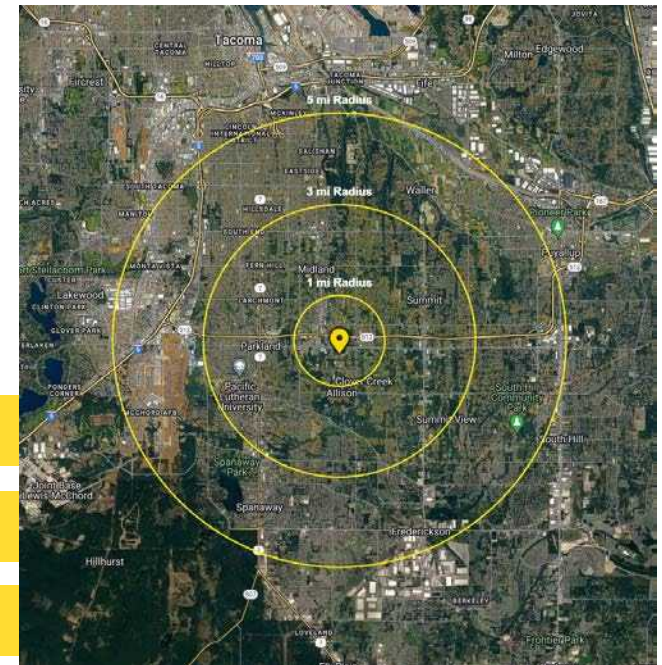
Average HH Income



Daytime Population

Regis - 2024

	Population	Average HH Income	Daytime Population
Mile 1	5,484	\$99,239	3,675
Mile 3	81,238	\$109,500	41,027
Mile 5	236,809	\$114,355	124,304



Singe Slope TPO Roof

18' Clear Roof Structure

5' Wide 6" Concrete Sidewalk

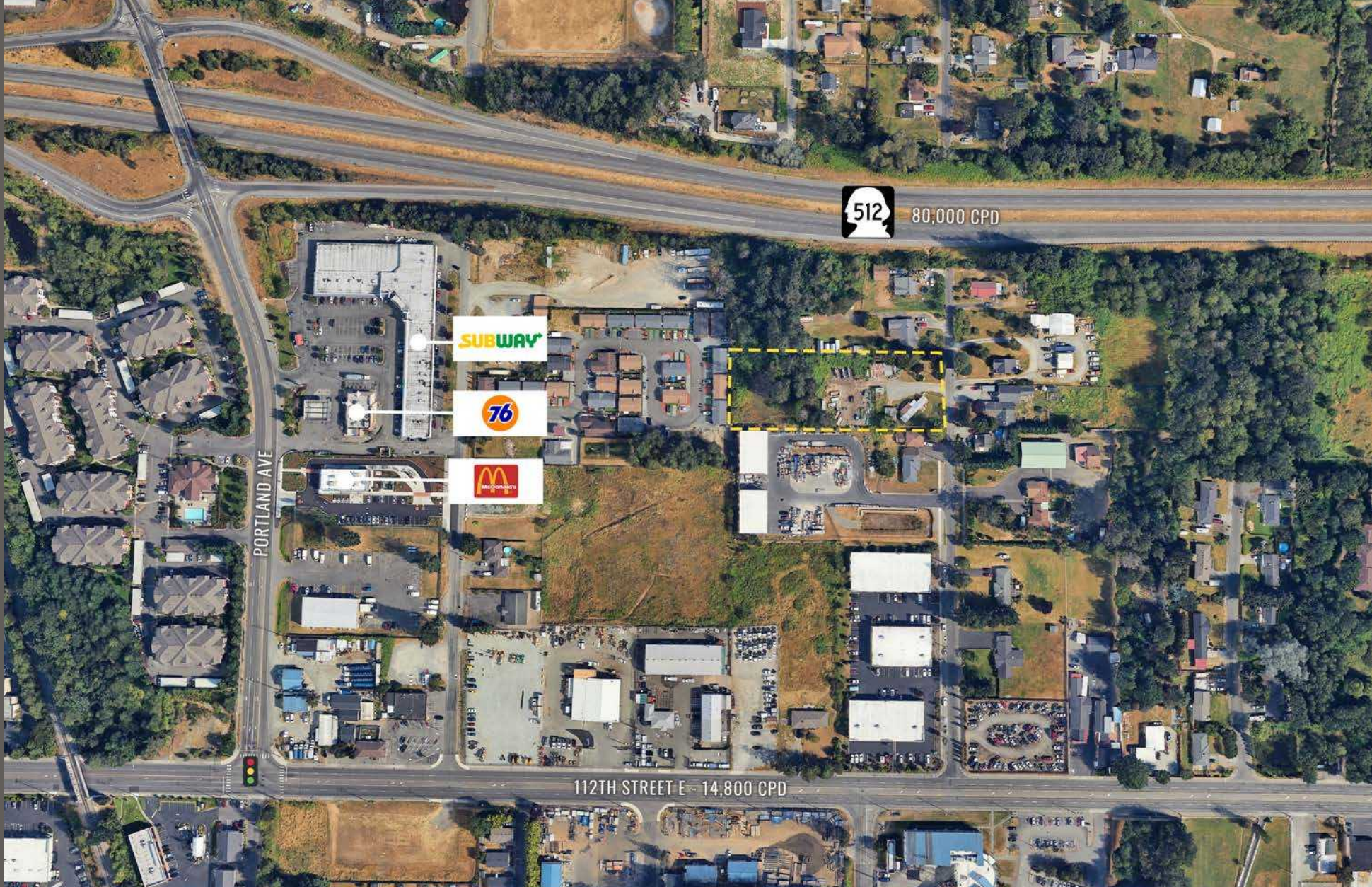
5' Roof Overhang

14' tall 20' Wide OH Door

East Elevation (Front)

CMU Block Construction

LOCATION DETAILS



Located moments from Lakewood and Puyallup



Quick Access to Hwy 512

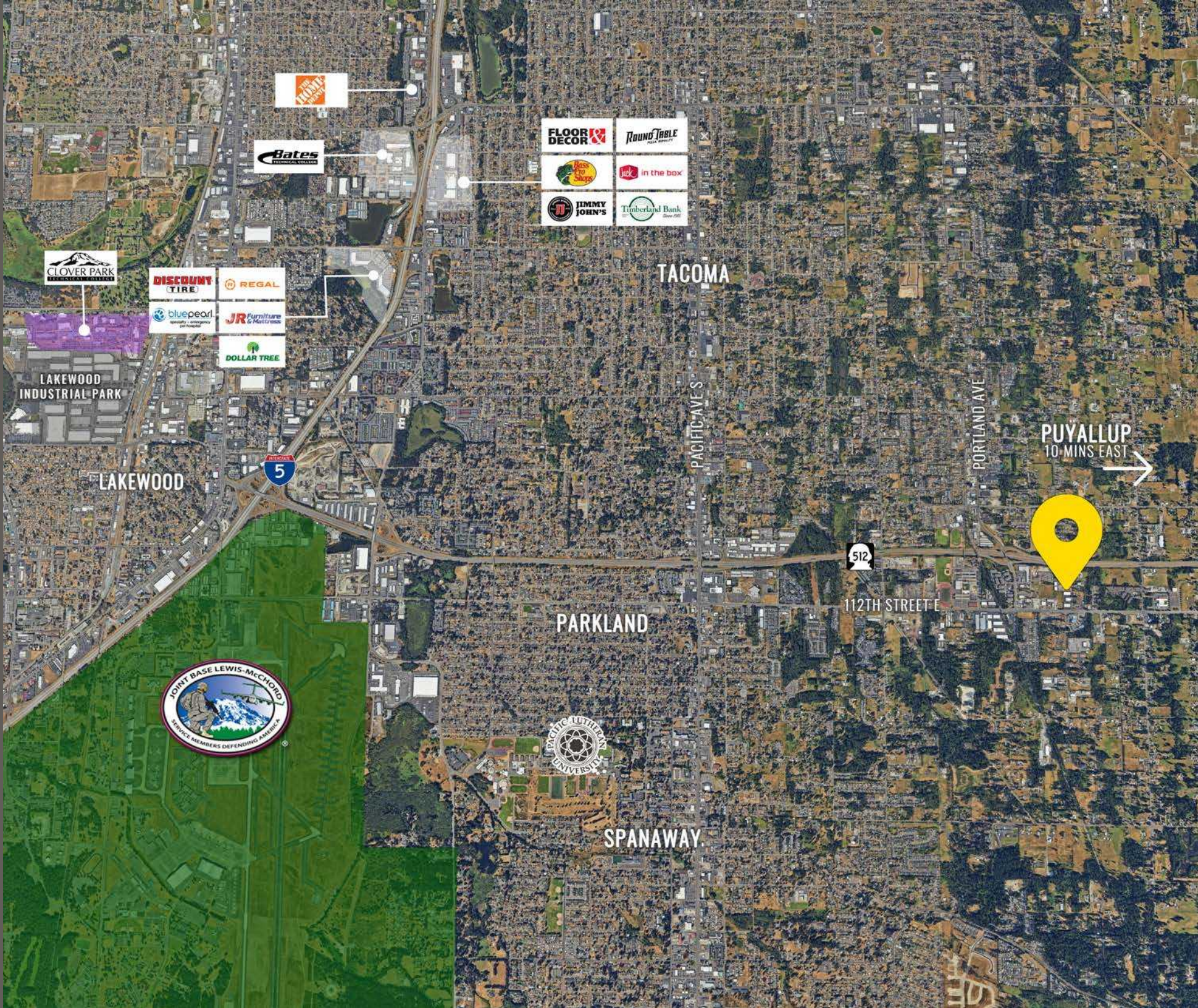


14,800 CPD
112th Street E



80,000 CPD
Hwy 512

LOCATION AERIAL



TACOMA | KIRKLAND | PORTLAND | SEATTLE

RELATIONSHIP FOCUSED.
RESULTS DRIVEN.



ANDY JESSBERGER

253.471.5507

andy@firstwesternproperties.com



First Western Properties—Tacoma Inc. | 253.472.0404
6402 Tacoma Mall Blvd, Tacoma, WA 98409 | fwp-inc.com

© First Western Properties, Inc. DISCLAIMER: The above information has been secured from sources believed to be reliable, however, no representations are made to its accuracy. Prospective tenants or buyers should consult their professional advisors and conduct their own independent investigation. Properties are subject to change in price and/or availability without notice.