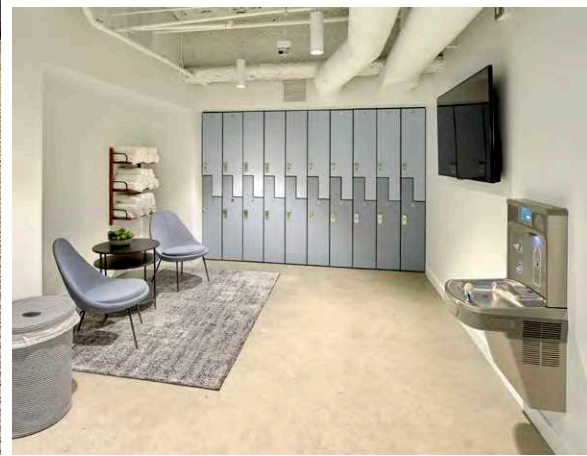
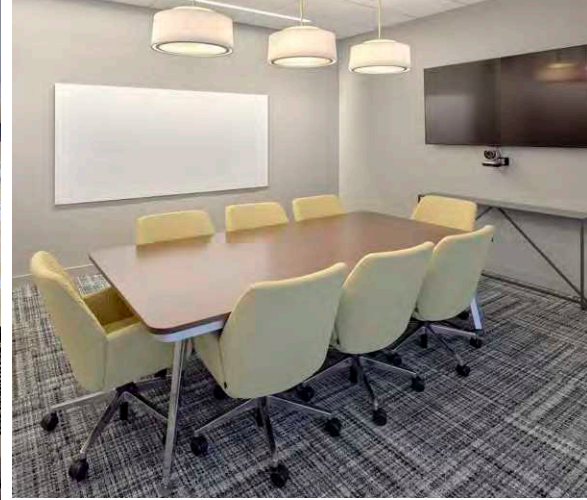




MARKET PLACE  
TOWER

—  
SEATTLE





**Market Place Tower** is a Class A premium asset conveniently located at the north end of the iconic Pike Place Market and the Waterfront.



## BUILDING FEATURES



13 floors of Class A office space



Conveniently located within walking distance to Seattle's best amenities



Exceptional views of Elliott Bay and the Olympic Mountains



Easy access to major bus lines, I-5 and Hwy-99



Energy Star rated



Walk Score of 98, Transit Score of 100







## BUILDING AMENITIES



Secure Bike Storage



Direct Access to the Seattle Athletic Club



Shower and Locker Facilities



Newly Renovated Tenant Amenity Center



Multiple Conference Facilities

## AVAILABILITIES

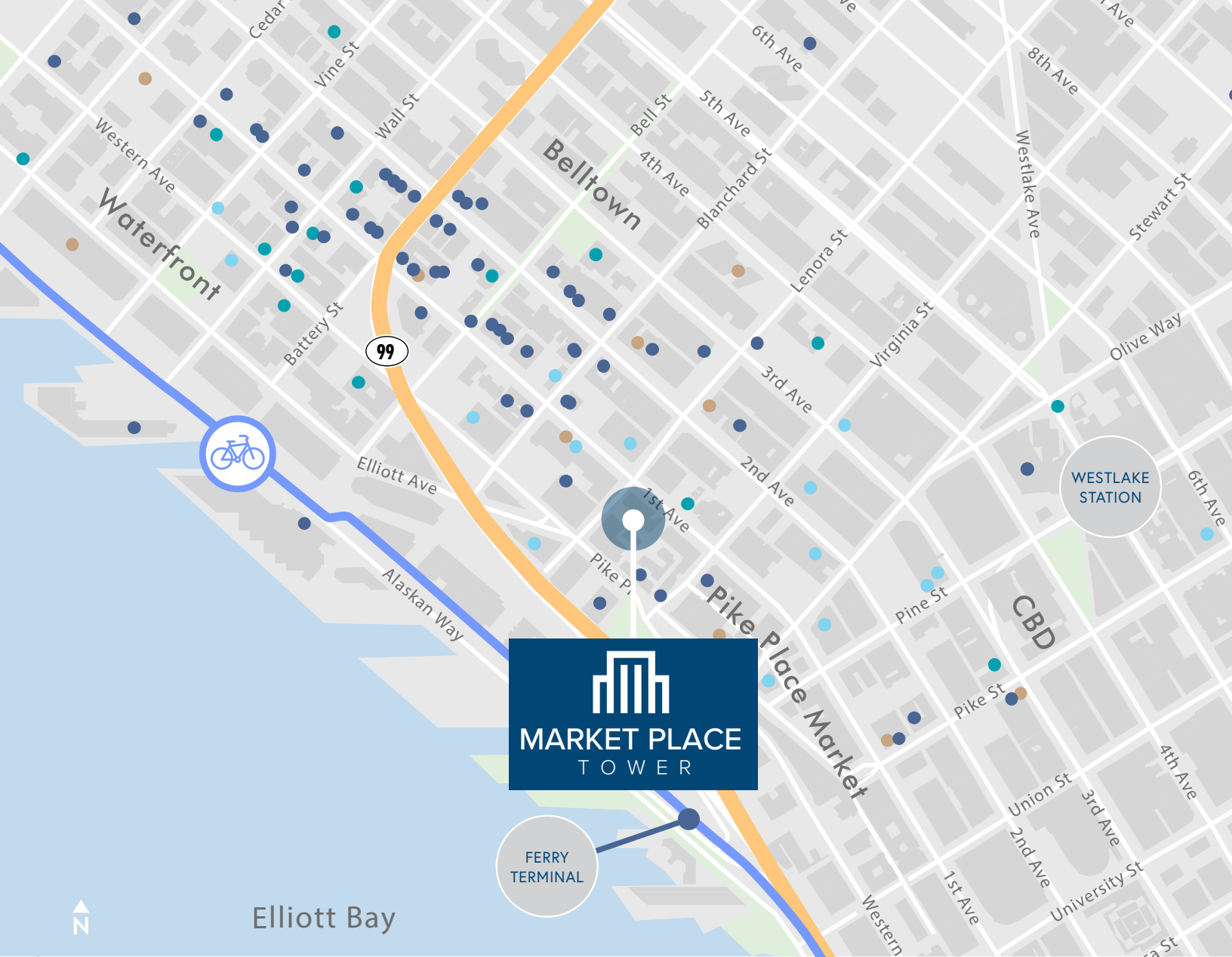
TOUR	SUITE	RSF	AVAILABLE	FLOOR PLAN	COMMENTS
	310	2,335	Now		Mix of open space and private offices.
	735	2,630	Now		North facing market ready suite with views of Elliott Bay and the Space Needle.
	1100	3,201	Now		Southwest facing suite with heavy build-out.
	1130	891	Now		East facing, move-in ready suite with two private offices and kitchen.
	1140	6,128	Now		Northwest facing suite with heavy build-out.
	1150	2,718	Now		Eastern facing suite with elevator lobby exposure and a mix of private offices and open space.
	1200	4,134	Now		Law firm build out with perimeter private offices. Western views of Elliott Bay and the Olympic Mountains.
	1212	7,696	12/1/2024		Exterior private offices with interior open space. Views of Elliott Bay and the Olympic Mountains.
	Penthouse	15,195	Now		Penthouse suite with west-facing private deck. Perimeter private offices, conference rooms and open space.



VIRTUALLY TOUR THE AMENITIES



VIRTUALLY TOUR THE LOBBY



**MARKET PLACE  
TOWER**

## LOCAL AMENITIES



**FOOD + DRINK**  
RESTAURANTS, CAFÉS,  
BAKERIES AND BARS



**SERVICES +  
SUPPLIES**  
GROCERY STORES, SPAS AND  
SERVICE RETAILERS



**SHOPS +  
ENTERTAINMENT**  
SHOPS AND  
ENTERTAINMENT VENUES



**COFFEE + TEA**  
COFFEE SHOPS  
AND ESPRESSO BARS

### FOR MORE INFORMATION, CONTACT:

**SCOTTA ASHCRAFT**

Senior Vice President  
+1 206 292 6063  
scotta.ashcraft@cbre.com

**NICK CARKONEN**

Senior Vice President  
+1 206 292 6039  
nick.carkonen@cbre.com

**RILEY SHEPHARD**

First Vice President  
+1 425 462 6932  
riley.shephard@cbre.com

**CBRE, Inc. | 1420 Fifth Avenue | Suite 3800 | Seattle, WA 98101**

© 2022 CBRE, Inc. All rights reserved. This information has been obtained from sources believed reliable, but has not been verified for accuracy or completeness. Any projections, opinions, or estimates are subject to uncertainty. The information may not represent the current or future performance of the property. You and your advisors should conduct a careful, independent investigation of the property and verify all information. Any reliance on this information is solely at your own risk. CBRE and the CBRE logo are service marks of CBRE, Inc. and/or its affiliated or related companies in the United States and other countries. All other marks displayed on this document are the property of their respective owners. Photos herein are the property of their respective owners and use of these images without the express written consent of the owner is prohibited. 8-26-24 CH

