

# LEASE

**PIONEER INDUSTRIAL PARK**  
14107 Pioneer Way East Puyallup, WA 98372



## OFFERING SUMMARY

Lease Rate:	Call for rates
Unit #:	Suite D
Availability:	October 1, 2024
Available SF:	3,450 SF
Office Size:	950 SF
Year Built:	2005
Loading:	1 GL Door
Zoning:	Employment Center (EC)
Parcel:	7895000190

## PROPERTY OVERVIEW

Subject space is the end cap unit that has been used for manufacturing and will be available October 1, 2024. Layout consists of warehouse space, two story office of approximately 950 SF with shower and restroom. Additional 1/2 acre yard is available within the park.

## PROPERTY HIGHLIGHTS

- STREET EXPOSURE
- HEAVY POWER
- NEWER LED LIGHTS
- SPRINKLERS
- INSULATED
- ADDITIONAL YARD STORAGE AVAILABLE IN THE PARK

**Brandon Thomas**

206 303 9595

bthomas@cbcworldwide.com

**Vladimir Olyanich**

425 615 0577

volyanich@cbcworldwide.com



**COLDWELL BANKER  
COMMERCIAL**  
DANFORTH

# LEASE

**PIONEER INDUSTRIAL PARK**  
14107 Pioneer Way East Puyallup, WA 98372



**Brandon Thomas**  
206 303 9595  
bthomas@cbcworldwide.com

**Vladimir Olyanich**  
425 615 0577  
volyanich@cbcworldwide.com



**COLDWELL BANKER  
COMMERCIAL**  
DANFORTH

# LEASE

**PIONEER INDUSTRIAL PARK**  
14107 Pioneer Way East Puyallup, WA 98372



**Brandon Thomas**  
206 303 9595  
bthomas@cbcworldwide.com

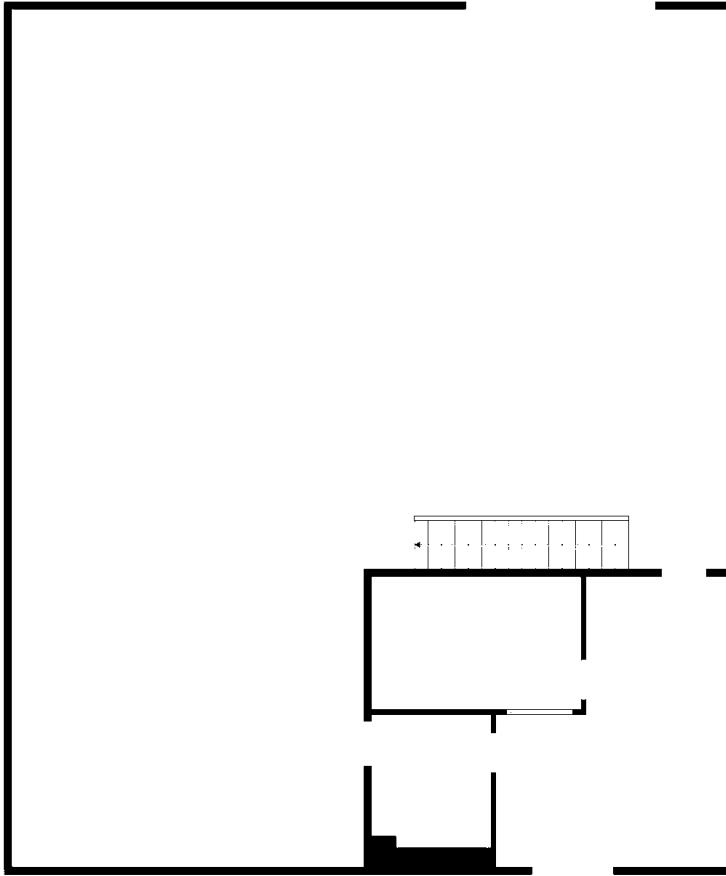
**Vladimir Olyanich**  
425 615 0577  
volyanich@cbcworldwide.com



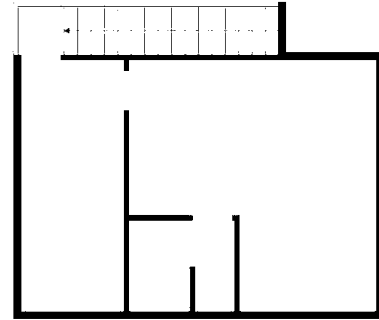
**COLDWELL BANKER  
COMMERCIAL**  
DANFORTH

# LEASE

**PIONEER INDUSTRIAL PARK**  
14107 Pioneer Way East Puyallup, WA 98372



FLOOR 1



FLOOR 2

**Brandon Thomas**

206 303 9595

bthomas@cbcworldwide.com

**Vladimir Olyanich**

425 615 0577

volyanich@cbcworldwide.com

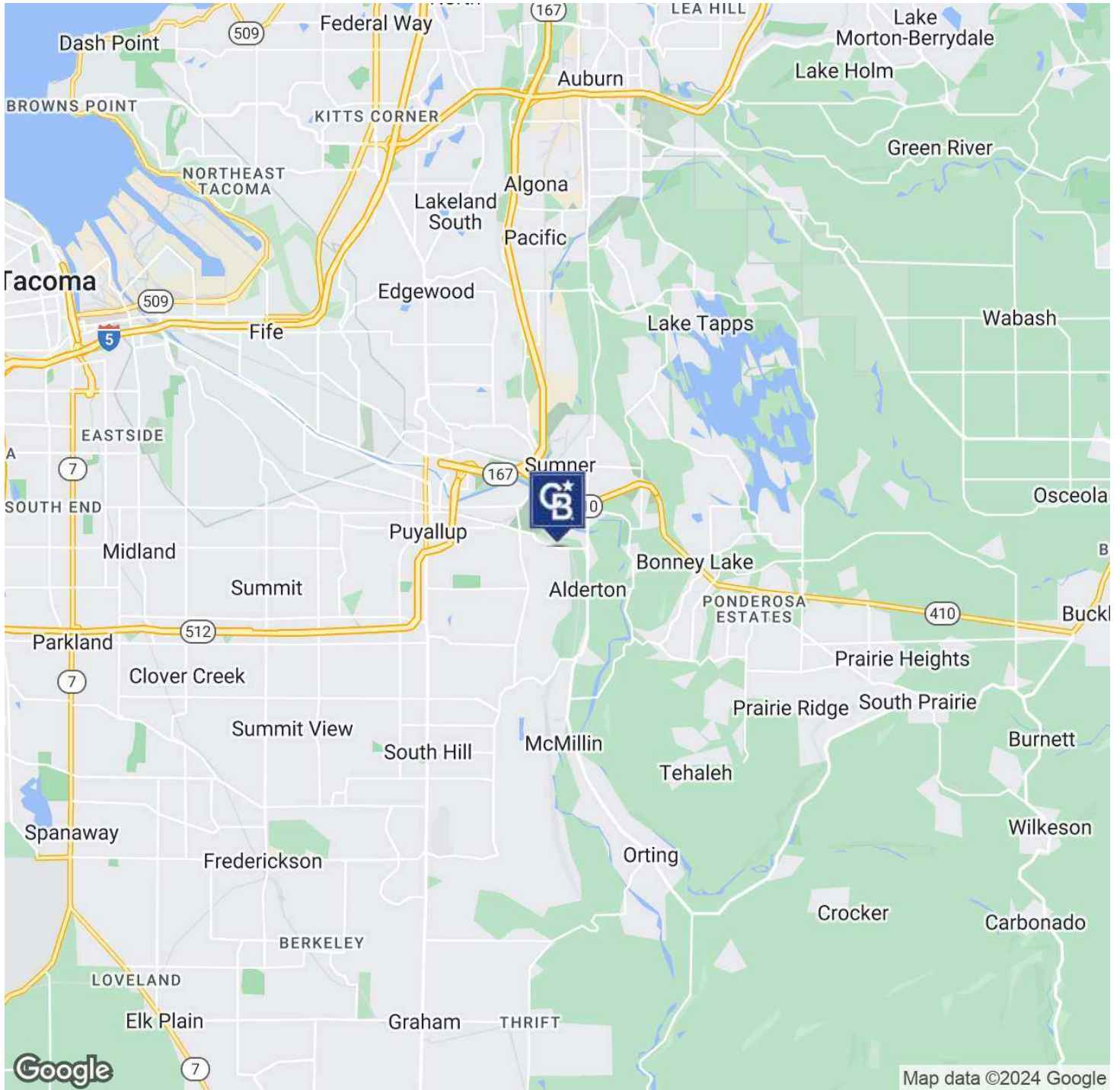


**COLDWELL BANKER  
COMMERCIAL**  
DANFORTH

# LEASE

## PIONEER INDUSTRIAL PARK

14107 Pioneer Way East Puyallup, WA 98372



**Brandon Thomas**

206 303 9595

bthomas@cbcworldwide.com

**Vladimir Olyanich**

425 615 0577

volyanich@cbcworldwide.com



**COLDWELL BANKER  
COMMERCIAL**  
DANFORTH