

# 2950 MEDICAL/ DENTAL BUILDING

*Office Spaces Available for Lease in Bellevue*

2950 NORTHUP WAY  
BELLEVUE, WA 98004

ENIC  
ELIZABETH INNOVATIVE CENTER

KIDDER.COM

km Kidder  
Mathews

2950 MEDICAL/DENTAL BUILDING



*The building is anchored by one of the nation's premier plastic surgery practices, along with three other boutique dental, concierge medicine, and podiatry practices.*

Recently renovated building common areas

Located near prominent medical facilities

Easy access to I-405 and SR-520

Close to Kirkland, Redmond, and Downtown Bellevue

Ample covered and surface parking available



*3,035 SF*

SUITE 202

*2,118 SF*

SUITE 204

*\$34.00*

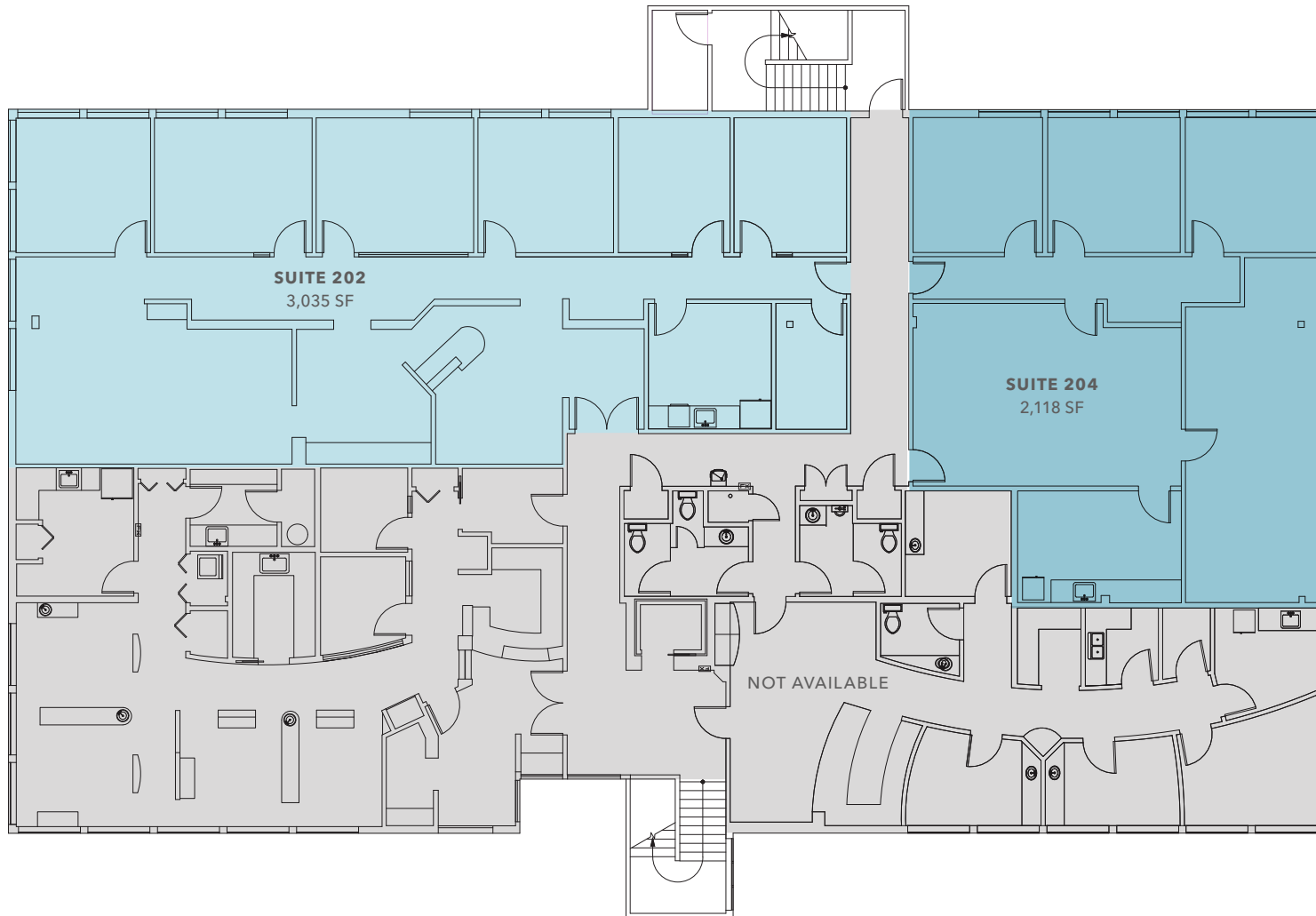
LEASE RATE (SF, NNN)

*12/01/24*

AVAILABLE

PROPERTY FEATURES

## SECOND FLOOR PLAN



*3,035 SF*

SUITE 202

*2,118 SF*

SUITE 204

*\$34.00*

LEASE RATE (SF, NNN)

*12/01/24*

AVAILABLE

# SUITE 202



AVAILABLE FOR LEASE



KIDDER MATHEWS

# SUITE 204

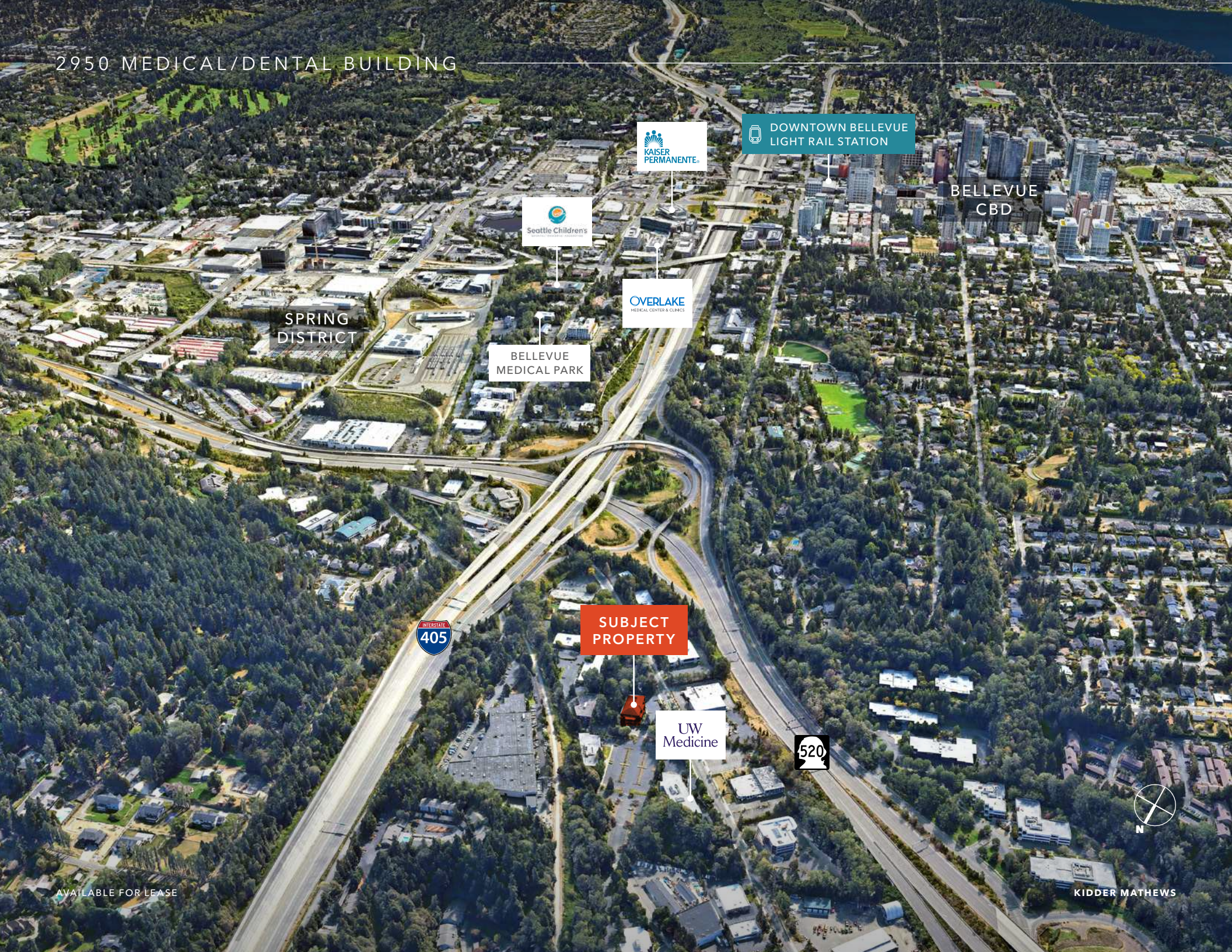


AVAILABLE FOR LEASE



KIDDER MATHEWS

# 2950 MEDICAL/DENTAL BUILDING



SPRING DISTRICT

Seattle Children's

KAISER PERMANENTE

DOWNTOWN BELLEVUE LIGHT RAIL STATION

BELLEVUE CBD

OVERLAKE MEDICAL CENTER & CLINICS

BELLEVUE MEDICAL PARK

INTERSTATE 405

SUBJECT PROPERTY

UW Medicine

520



AVAILABLE FOR LEASE

KIDDER MATHEWS



## 2950 MEDICAL/DENTAL BUILDING

*For more information on  
this property, please contact*

GARY GUENTHER  
425.450.1154  
gary.guenther@kidder.com

CHARLES CAPLICE  
425.450.1160  
charles.caplice@kidder.com

[KIDDER.COM](https://www.kidder.com)

This information supplied herein is from sources we deem reliable. It is provided without any representation, warranty, or guarantee, expressed or implied as to its accuracy. Prospective Buyer or Tenant should conduct an independent investigation and verification of all matters deemed to be material, including, but not limited to, statements of income and expenses. Consult your attorney, accountant, or other professional advisor. All Kidder Mathews designs are the sole property of Kidder Mathews. Branded materials and layouts are not authorized for use by any other firm or person.

