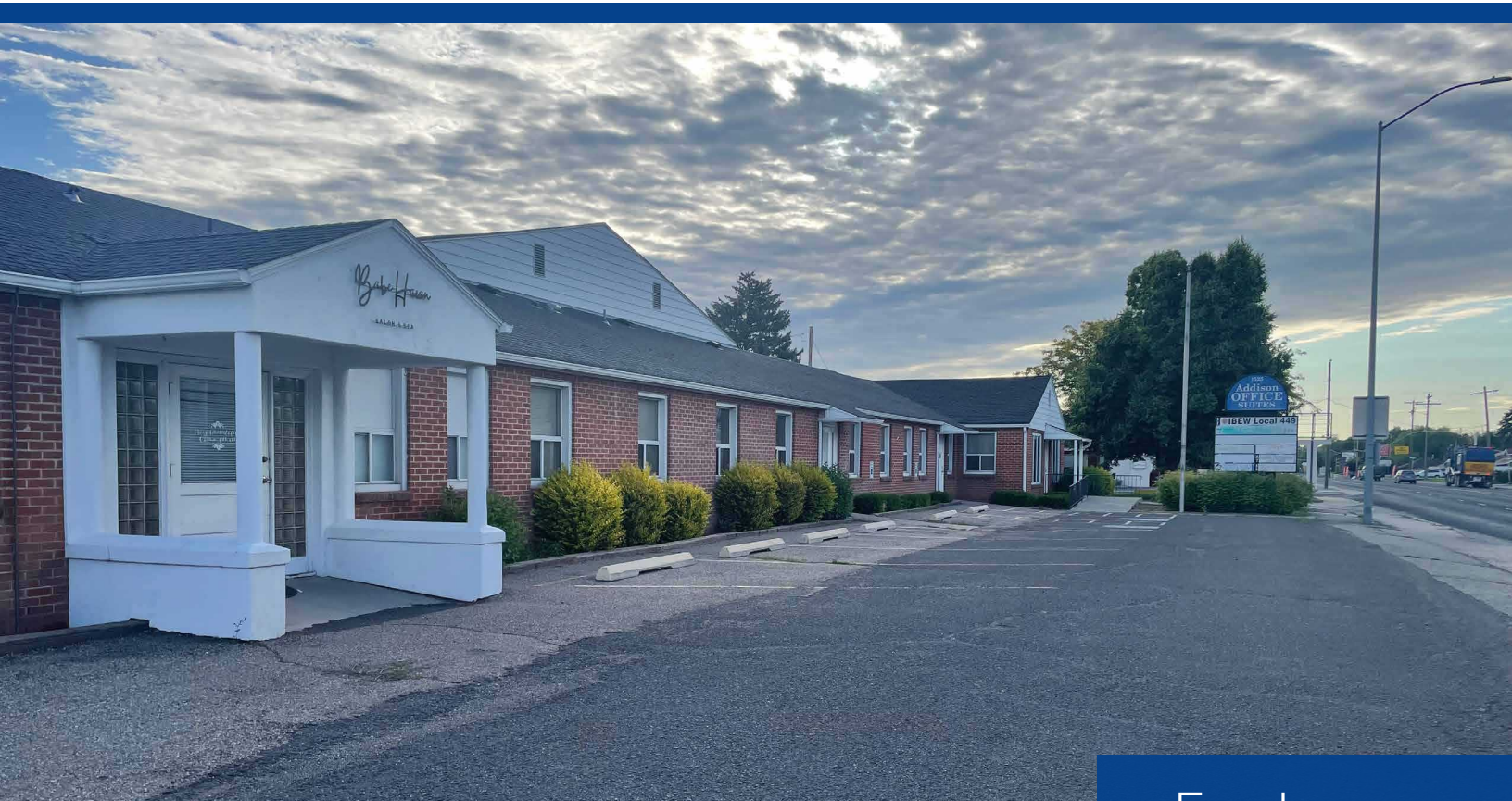
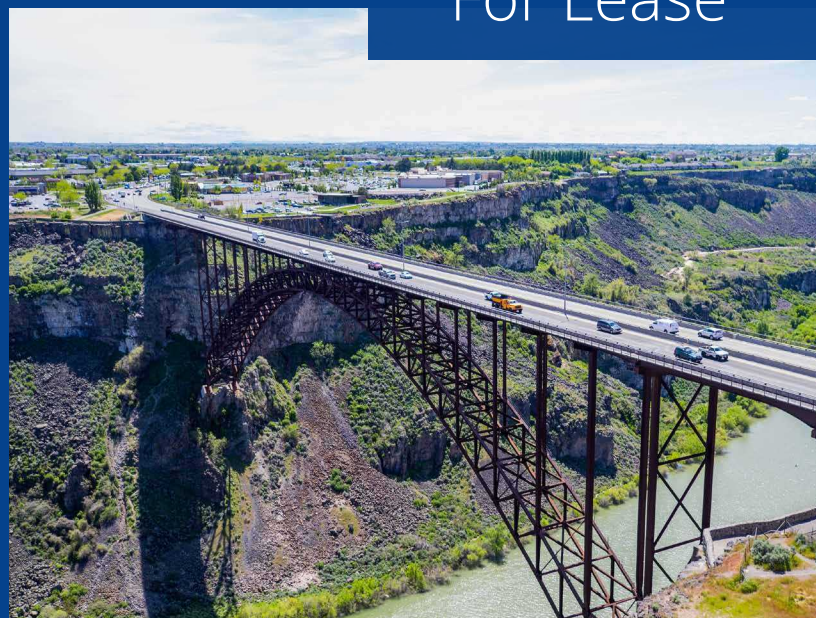


# Addison Office Suites

1525 Addison Avenue E. | Twin Falls, ID



For Lease



**Tami Walker**  
208 420 4601  
tami.walker@colliers.com

**Jerrika Gonzalez**  
208 344 6516  
jerrika.gonzalez@colliers.com



# For Lease

## Highlights

- Available immediately!
- Pylon signage available to maximize exposure
- High visibility at a busy intersection
- Surrounded by commercial & residential properties
- Rates include all utilities and Wi-Fi

## Space Available

Suite	Size	Rate/Month
A-4	145 SF	\$450
A-5	185 SF	\$500
C-11/C-12	700 SF	\$1,250

\* Water available in suite

\*\*Suite has separate outside entrance

## Property Information

<b>Property Type</b>	Office
<b>Building Size</b>	17,652 SF
<b>Land Size</b>	1.06 acres
<b>Parking</b>	Multiple private paved parking lots
<b>Lease Type</b>	Gross

## Demos

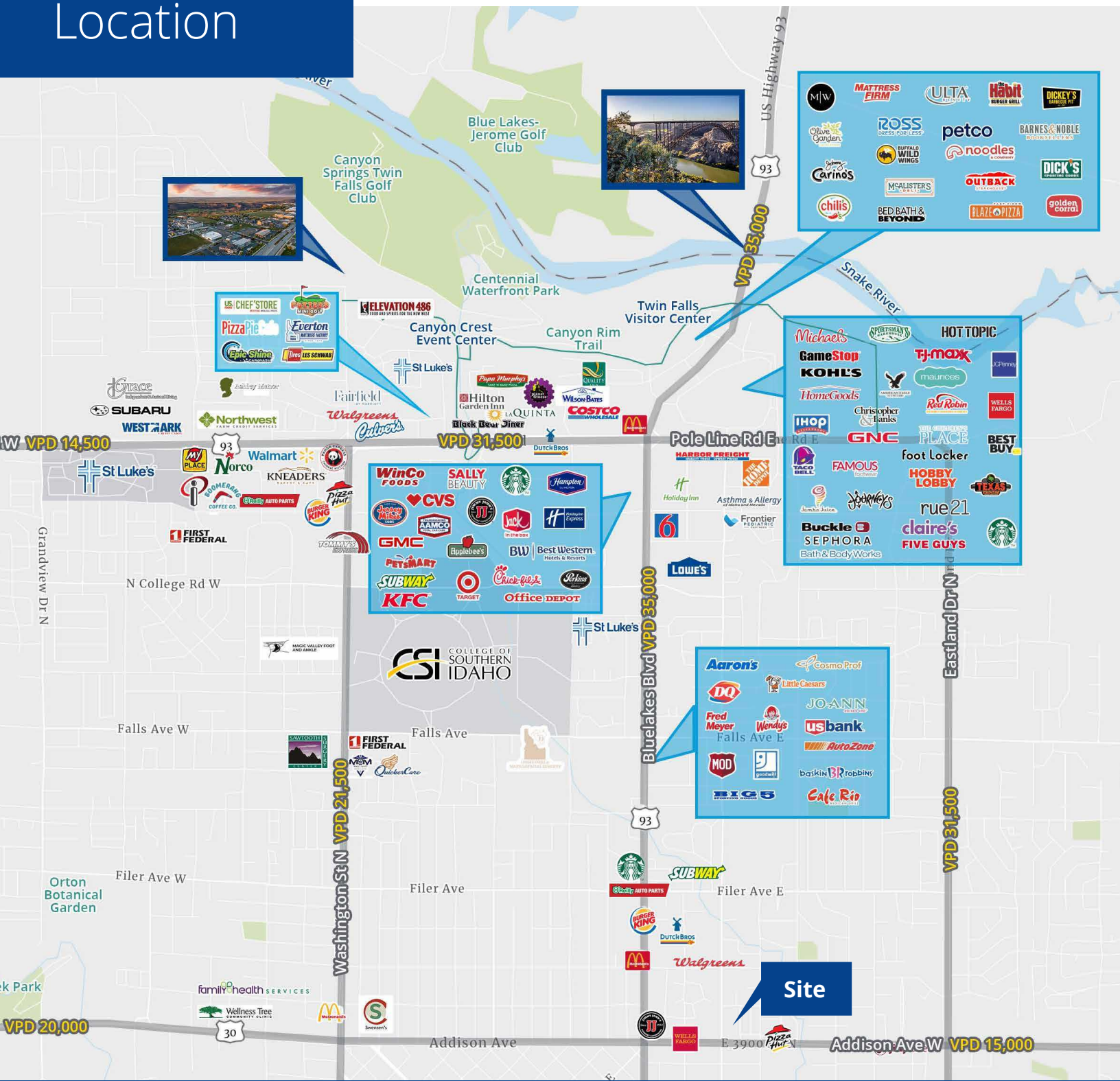
	1 Miles	3 Miles	5 Miles
Population	15,522	53,240	64,397
Households	6,112	19,876	23,686
Avg. HH Income	\$73,530	\$79,085	\$81,761



# Location

Google Map

Street View



205 Shoshone Street N, Suite 201  
 Twin Falls, Idaho 83301  
 208 910 2006  
 colliers.com/idaho

This document has been prepared by Colliers for advertising and general information only. Colliers makes no guarantees, representations or warranties of any kind, expressed or implied, regarding the information including, but not limited to, warranties of content, accuracy and reliability. Any interested party should undertake their own inquiries as to the accuracy of the information. Colliers excludes unequivocally all inferred or implied terms, conditions and warranties arising out of this document and excludes all liability for loss and damages arising therefrom. This publication is the copyrighted property of Colliers and/or its licensor(s). © 2024. All rights reserved. This communication is not intended to cause or induce breach of an existing listing agreement. Colliers Magic Valley, LLC.