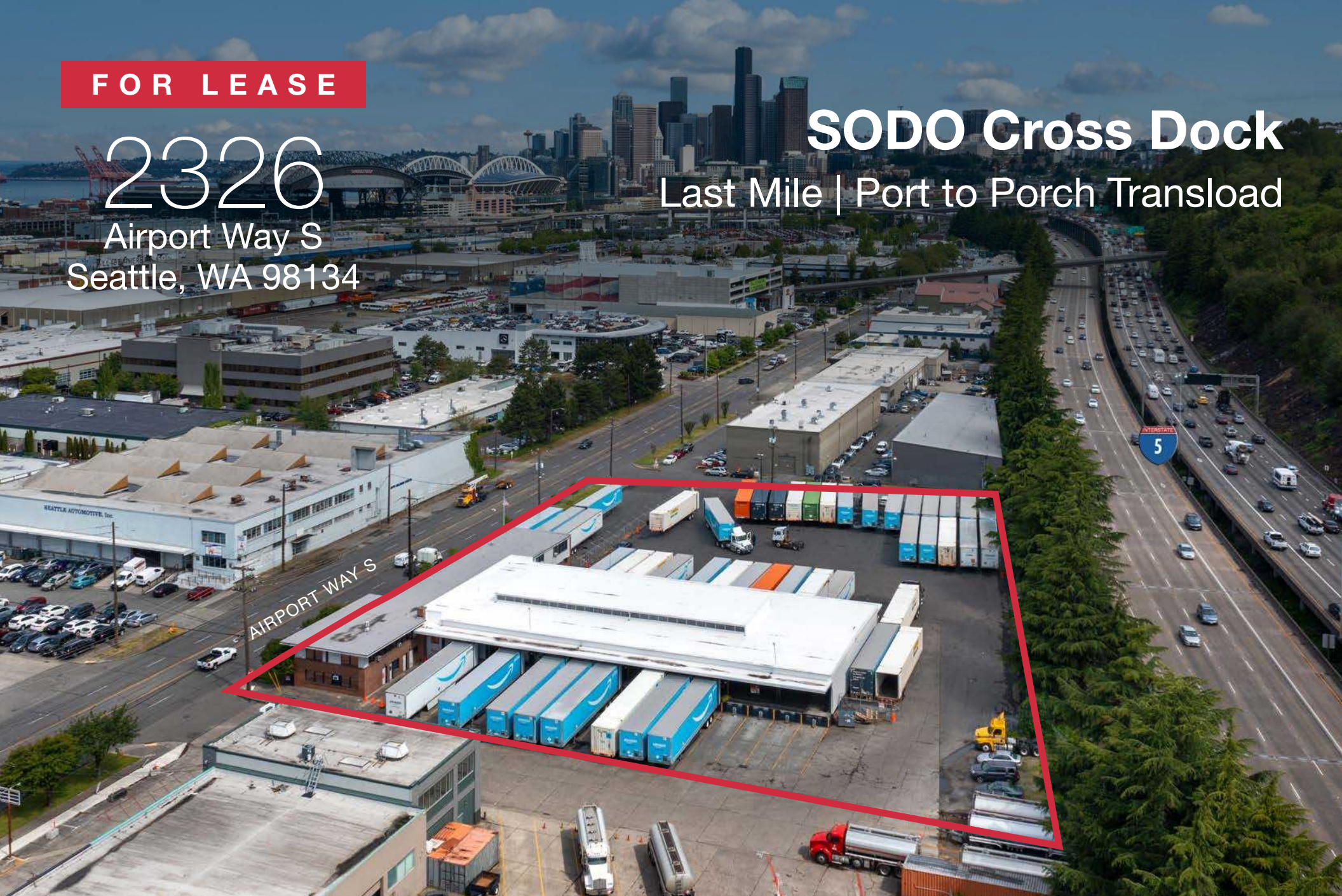


FOR LEASE

2326

Airport Way S  
Seattle, WA 98134

SODO Cross Dock  
Last Mile | Port to Porch Transload










FORTRESS



Burr & Temkin



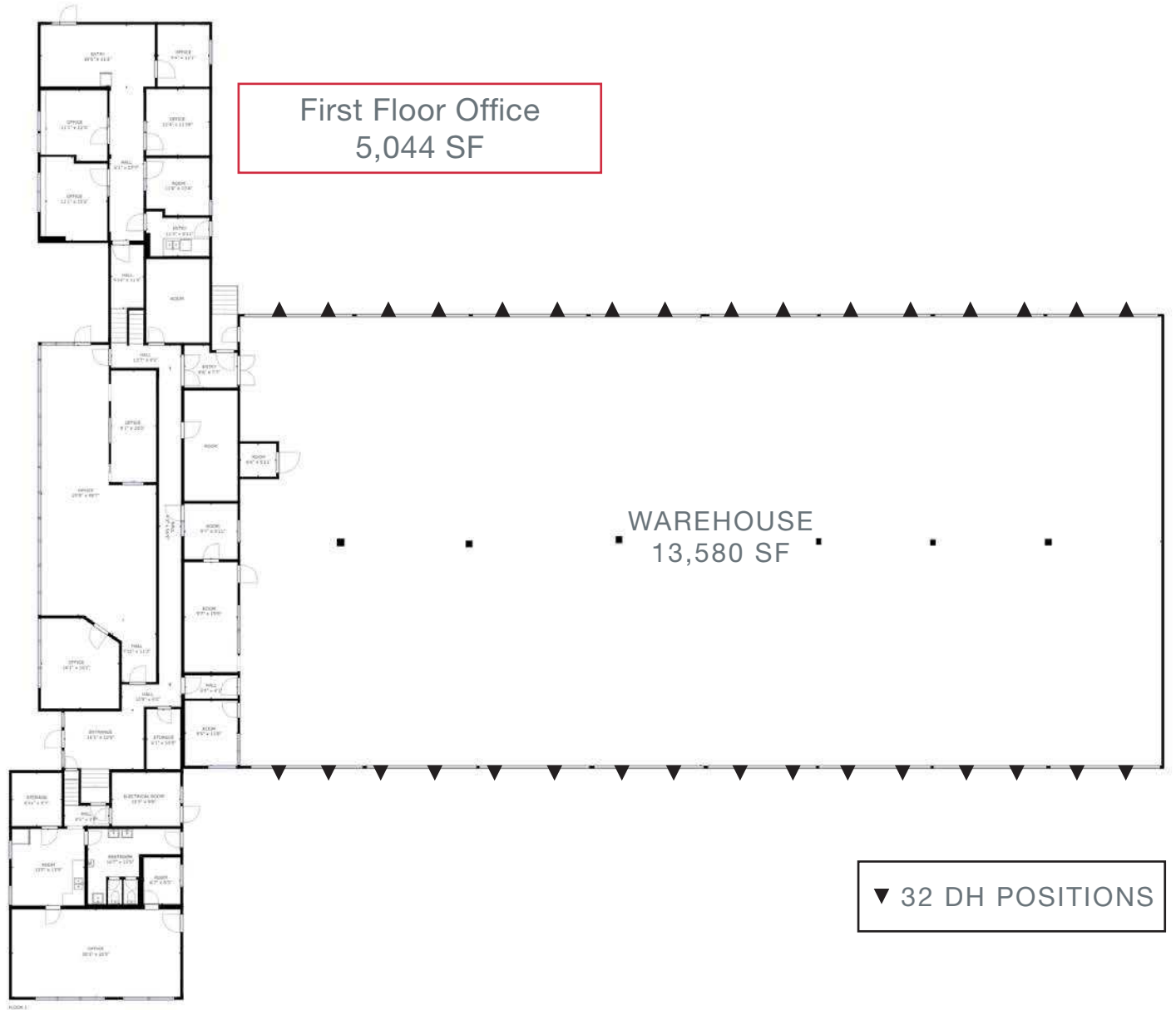
# HIGHLIGHTS

-  **LOT SIZE**  
1.92 acres
-  **BUILDING SIZE**  
21,580 square foot cross-dock warehouse building (includes 7,769 SF office)
-  **CEILING HEIGHT**  
14' High Ceilings
-  **LOADING**  
32 loading positions  
Newer dock locks on the 16 South facing docks
-  **YARD**  
1.25 acres of truck yard
-  **LEASE RATE**  
Call broker for rates
-  **NOTES**  
Port 1st Touch, E-Commerce Last Touch

# FLOOR PLAN - 32 DH POSITIONS ON 1.92 ACRES

First Floor Office  
5,044 SF

Second Floor Office  
2,725 SF





2326 AIRPORT WAY S

**LOCATION HIGHLIGHTS**

- Intersection of e-commerce and port corridors
- Immediate proximity to port-corridors and major freeways
- Minutes from Downtown Seattle

**DISTANCE**

- 1 Mile:** Port of Seattle
- 2 Miles:** Downtown Seattle
- 12 Miles:** Downtown Bellevue

**DEMOGRAPHICS 5 MILES**

- POPULATION**  
423,509
- HOUSEHOLDS**  
207,457

THE INFORMATION CONTAINED HEREIN HAS BEEN GIVEN TO US BY THE OWNER OF THE PROPERTY OR OTHER SOURCES WE DEEM RELIABLE. WE HAVE NO REASON TO DOUBT ITS ACCURACY, BUT WE DO NOT GUARANTEE IT. ALL INFORMATION SHOULD BE VERIFIED PRIOR TO PURCHASE OR LEASE. THIS BROKERS PRICE OPINION IS NOT AN APPRAISAL AS DEFINED IN CHAPTER 18.140 RCW AND HAS BEEN PREPARED BY A REAL ESTATE LICENSEE, LICENSED UNDER CHAPTER 18.85 RCW WHO IS NOT ALSO STATE CERTIFIED OR STATE LICENSED AS A REAL ESTATE APPRAISER UNDER 18.140 RCW. G:\SHARED DRIVES\ADMIN TEAM\MARKETING\FLYERS\SEATTLE\2326 AIRPORT WAY S\LEASE\2326 AIRPORT WAY S LEASE FLYER NEW V2

# SODO CROSS DOCK

2326 Airport Way S  
Seattle, WA 98134

## EXCLUSIVELY MARKETING BY:

### HANS SWENSON

NAI PUGET SOUND PROPERTIES  
+1 425 586 5630  
hswenson@nai-pp.com

### JOHN VERNON

NAI PUGET SOUND PROPERTIES  
+1 425 586 5638  
jvernon@nai-pp.com

### BOB SWAIN

NAI PUGET SOUND PROPERTIES  
+1 425 586 5622  
bswain@nai-pp.com

### ANDREW KEMMERER

BURR & TEMPKIN  
+1 425 281 3646  
akemmerer@burrtemkin.com

### GARETT HALL

BURR & TEMPKIN  
+1 360 259 8790  
ghall@burrtemkin.com

