

**FOR LEASE**

3922 148th St. SE  
Mill Creek, WA



11621 97th Lane NE, Kirkland, WA 98034  
425.822.5522 | fwp-inc.com

# ESPLANADE AT MILL CREEK

Jake Thurber | Dale Goong

© First Western Properties, Inc. **DISCLAIMER:** The above information has been secured from sources believed to be reliable, however, no representations are made to its accuracy. Prospective tenants or buyers should consult their professional advisors and conduct their own independent investigation. Properties are subject to change in price and/or availability without notice.

### AVAILABLE

Suite 108 - Office  
945 SF | \$21.00 PSF, NNN

Suite 203 - Medical/Dental  
2,400 SF | Call for rates, NNN

### FEATURES

- Located in the heart of one of Puget Sound's most affluent cities
- Pylon sign space available
- Excellent visibility along Seattle Hill Rd. - the major NE/SW connector for SR 96 and SR 527
- 97,665 households within a 5-mile radius
- 144 parking stalls
- 13,638 ADT on Seattle Hill Rd.
- 8,091 ADT on 148th St. SE



### CONTACT



Jake Thurber  
425-250-3277  
jthurber@fwp-inc.com



Dale Goong  
425-250-3275  
dale@fwp-inc.com

### CO-TENANTS

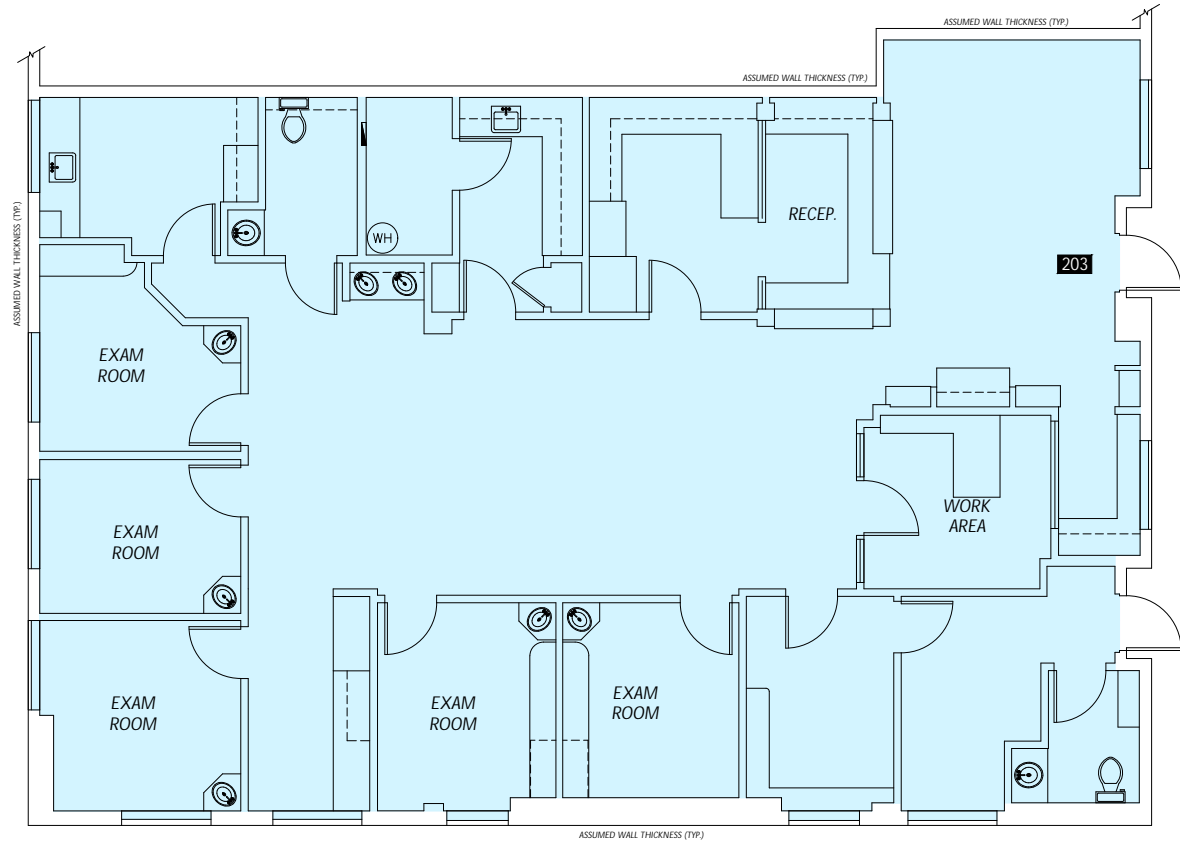
- Everett Clinic
- Calabria Restaurant
- DJ Market
- Thai 5
- Garlic Jim's
- Edward Jones
- Twisted Lime Pub
- Penny Creek Dentistry
- Reflections School of Dance
- Sun Flower Cleaners
- Ana's Nails
- Ukaway Teriyaki
- White Tiger Martial Arts
- PI Aesthetics
- Defensive Driving School
- Angel Haircuts

### DEMOGRAPHICS

	Population	Average HH Income	Daytime Population
Mile 1	17,853	\$204,387	1,412
Mile 3	117,801	\$182,642	16,292
Mile 5	274,302	\$154,543	64,463

Regis - 2024





### Suite 203 - Medical/Dental

2,400 SF

Serviced by elevator

Call for rates



