

PIER 54

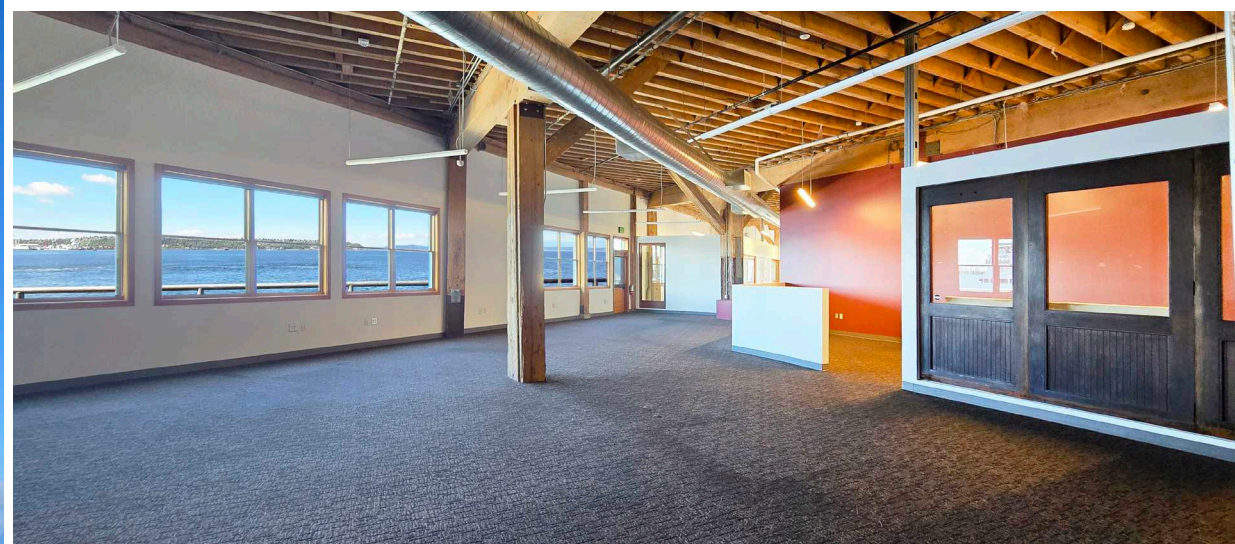
Unique restaurant opportunity in the heart of Seattle's vibrant waterfront district with high foot traffic and breathtaking views.



COLLIERS | PUGET SOUND
11225 SE 6th Street, Suite 240
Bellevue, WA 98004

RYAN AMOS
ryan.amos@colliers.com
+1 (425) 409-4811

This document has been prepared by Colliers for advertising and general information only. Colliers makes no guarantees, representations or warranties of any kind, expressed or implied, regarding the information including, but not limited to, warranties of content, accuracy and reliability. Any interested party should undertake their own inquiries as to the accuracy of the information. Colliers excludes unequivocally all inferred or implied terms, conditions and warranties arising out of this document and excludes all liability for loss and damages arising there from. This publication is the copyrighted property of Colliers and/or its licensor(s). © 2024. All rights reserved.



Premier Location: Located on Seattle's bustling waterfront, adjacent to new Seattle Waterfront Park and Washington State Ferry Terminal, Pier 54 is a renowned destination for locals and tourists alike.

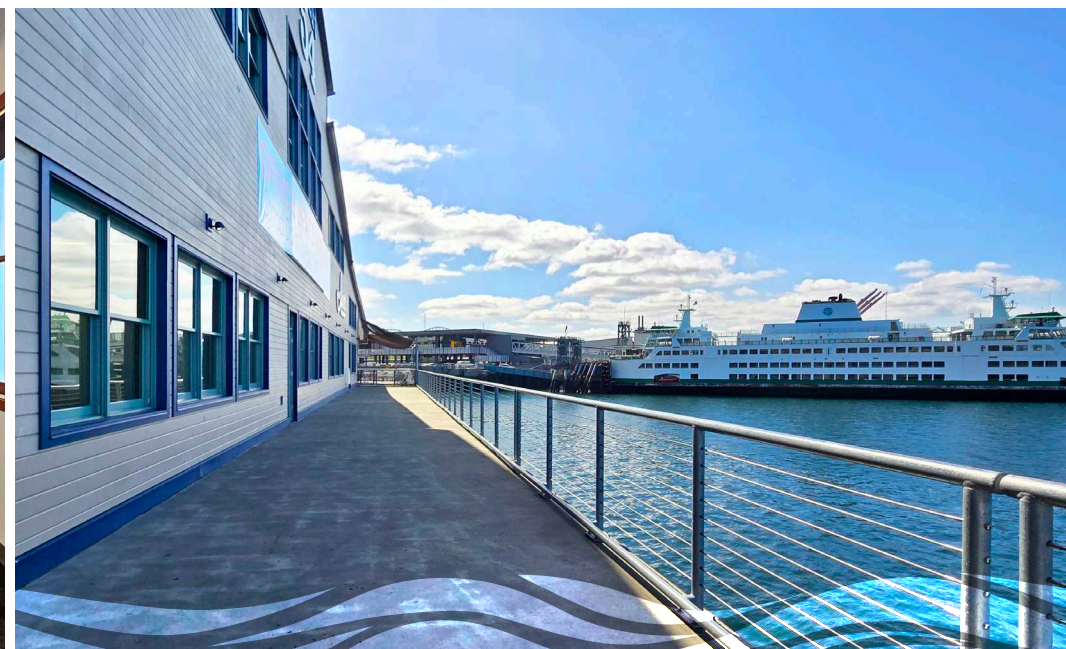
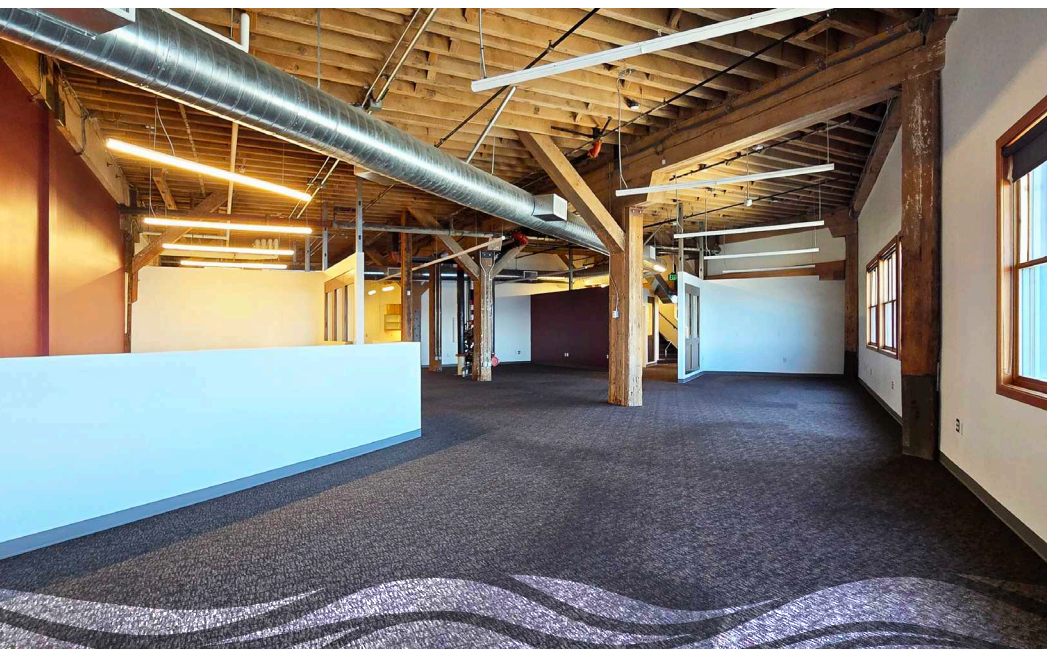
Accessibility: Pier 54 is easily accessible by foot, bike, public transport, and even by boat, making it convenient for both locals and tourists to visit your restaurant.

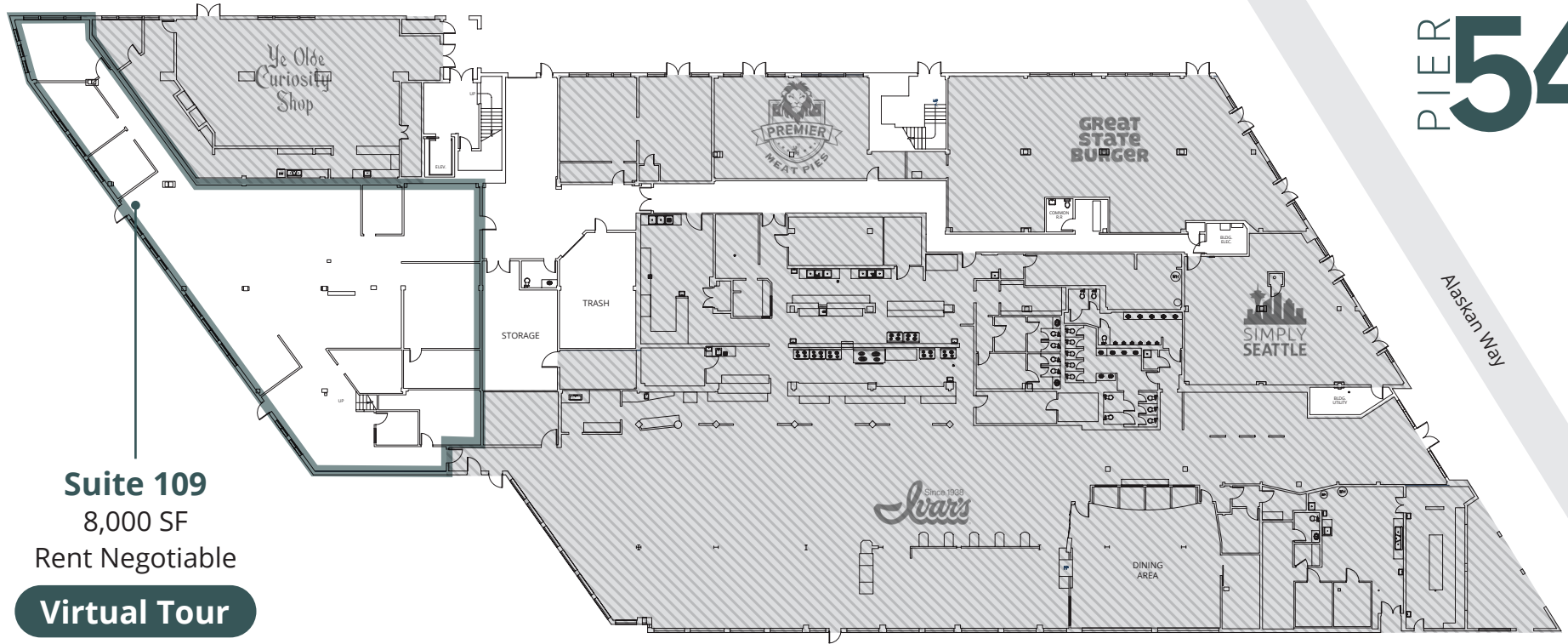
Historic Charm: With a rich history dating back to 1900, Pier 54 boasts a unique charm and character that sets it apart from other retail spaces.

High Visibility: Benefit from high visibility and foot traffic, ensuring your business gets noticed by a diverse audience.

Scenic Views: Overlooking Elliott Bay, Pier 54 offers stunning waterfront views, creating a picturesque dining experience that few locations can match. The backdrop of boats, ferries, and the Seattle skyline adds to the ambiance.

Surrounded by Amenities: Enjoy a vibrant atmosphere surrounded by shops, restaurants, and attractions that draw visitors year-round.





Suite 109

8,000 SF

Rent Negotiable

Virtual Tour

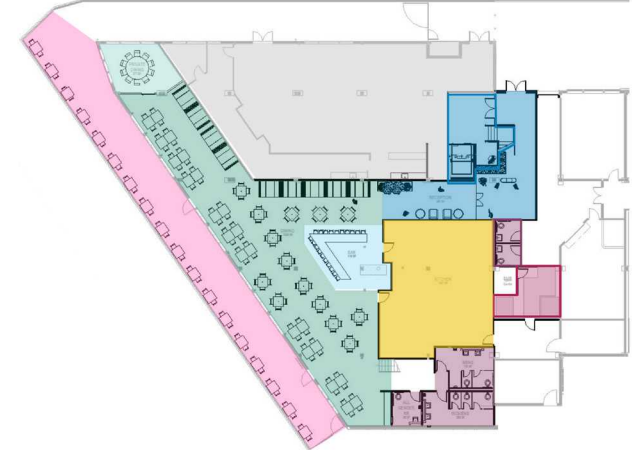
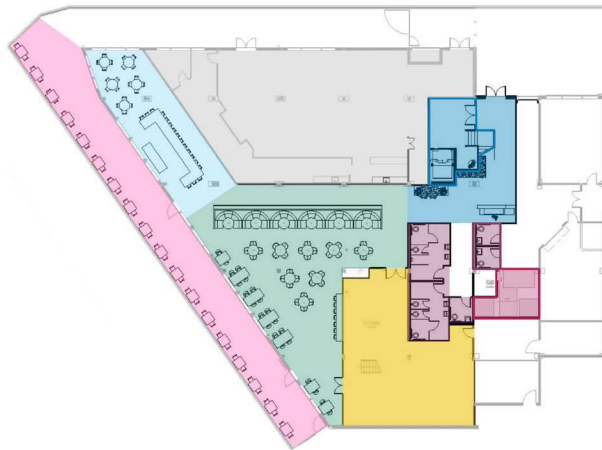
TEST FIT OPTIONS

- Kitchen
- Lobby
- Bar
- Private Dining
- Open Dining
- Outdoor
- Restrooms
- Bike Storage

Option 1

Option 2

Option 3



The ongoing transformation of the Seattle waterfront promises to make it a highly attractive destination for visitors. With its planned features such as a scenic promenade, parks, and enhanced access to Elliott Bay, the revitalized waterfront is expected to draw in a greater number of tourists and locals alike.

PIER 54



POPULATION



MEDIAN HH INCOME

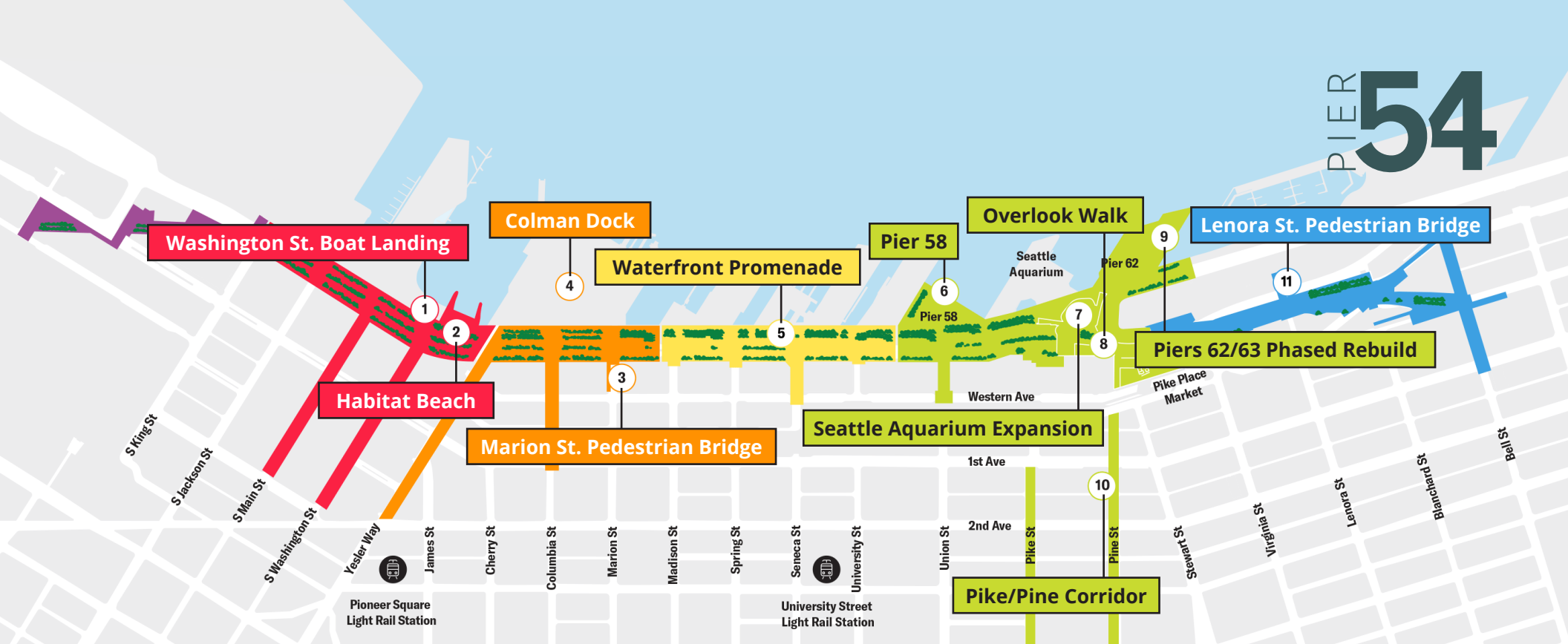


PER CAPITA INCOME

	POPULATION		MEDIAN HH INCOME		PER CAPITA INCOME	
	Current	5 Yr Projected	Current	5 Yr Projected	Current	5 Yr Projected
1 mile	60,838	72,349	\$105,285	\$122,609	\$96,459	\$110,644
2 miles	163,902	183,702	\$107,412	\$127,579	\$94,941	\$110,991
3 miles	244,133	268,232	\$115,994	\$139,023	\$95,946	\$111,060

The number of unique out-of-town visitors coming downtown during the summer **continued to increase**, growing to **nearly 3.5 million** in 2023.





RAILROAD WAY

A tree-lined pathway connecting the waterfront to the stadiums

HISTORIC PIERS

A collection of historic piers continue a 150-year tradition of Seattle's working waterfront, reimagined to present year-round opportunities to eat, drink, and play

PIONEER SQUARE

Lush green east-west connections to a historic neighborhood and a peaceful habitat beach where visitors can touch the water

CENTRAL PUBLIC SPACE

The cultural hub of the waterfront ties together two iconic waterfront destinations, Pike Place Market and the Seattle Aquarium, with added space for activity and sweeping views

TRANSIT HUB

A link from the downtown core to ferries, a bus every two minutes, and the bay

BELLTOWN

A leafy connection to an active neighborhood brimming with shopping, food, and nightlife