



OFFICE SPACE FOR LEASE

JOHNSON OFFICE CENTER

729 100TH ST SE | EVERETT, WA 98208

NAI Puget Sound
Properties

PROPERTY OVERVIEW

JOHNSON OFFICE CENTER

729 100TH ST SE | EVERETT, WA 98208

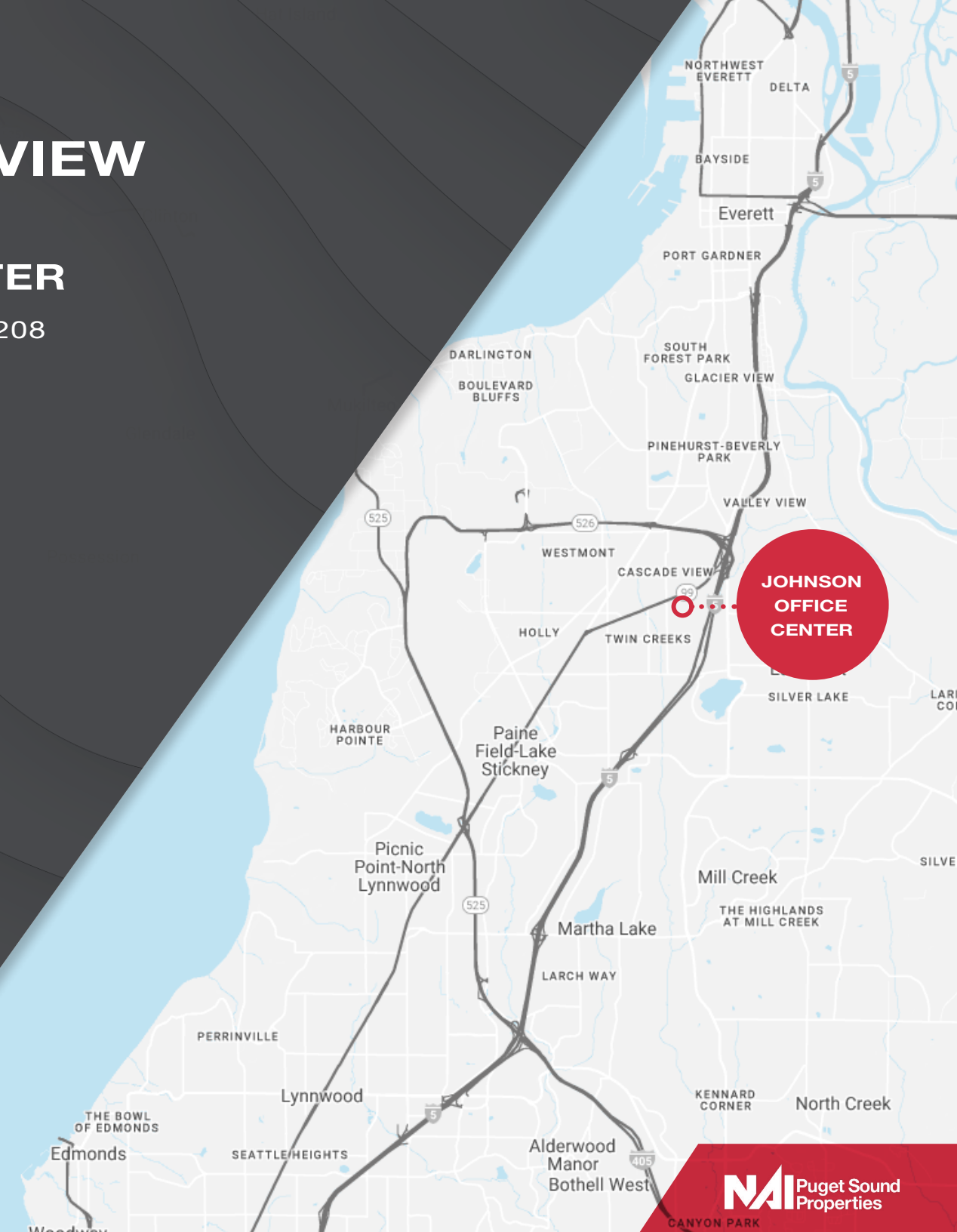
- 22,848 Total SF
- Divisible to 8,000 SF
- 2 full floors available over parking
- Secured parking garage
- E Car charger
- Abundant onsite surface parking
- Exterior decks
- Near major transit center
- Near retail and restaurant amenities
- Close proximity to I-5 and Hwy 99
- Rental Rate: \$1.58 NNN

CHRIS O'CONNOR

PRINCIPAL

+1 425 586 5640

coconnor@nai-psp.com



**JOHNSON
OFFICE
CENTER**

NAI Puget Sound
Properties

CANYON PARK

AERIAL OVERVIEW

**CLOSE PROXIMITY
TO I-5 AND HWY 99**

**DOWNTOWN
EVERETT**

EVERETT MALL WAY

**EVERETT
MALL**

**EVERETT
METRO
TRANSIT
STATION**

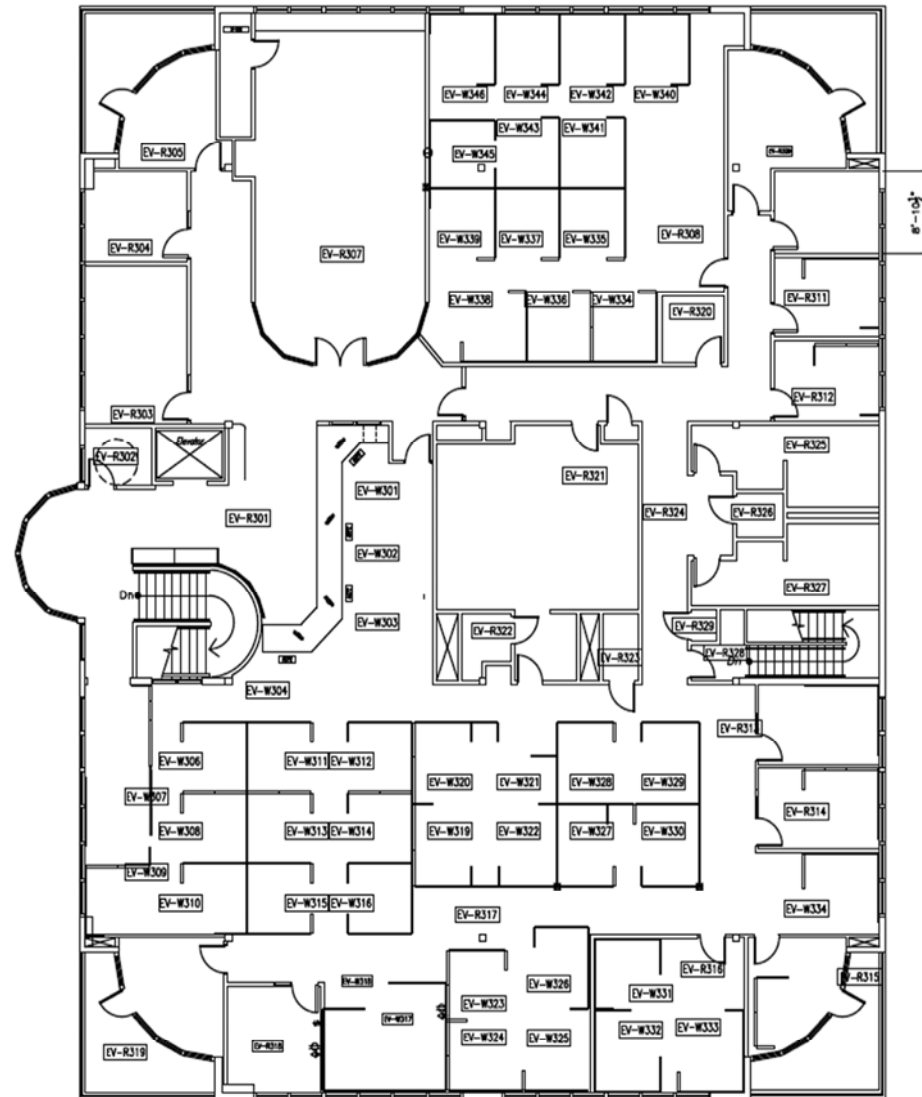
**JOHNSON
OFFICE
CENTER**

2ND FLOOR

SUITE 200

11,424 RSF

Divisible to 8,000 SF



CHRIS O'CONNOR

PRINCIPAL

+1 425 586 5640

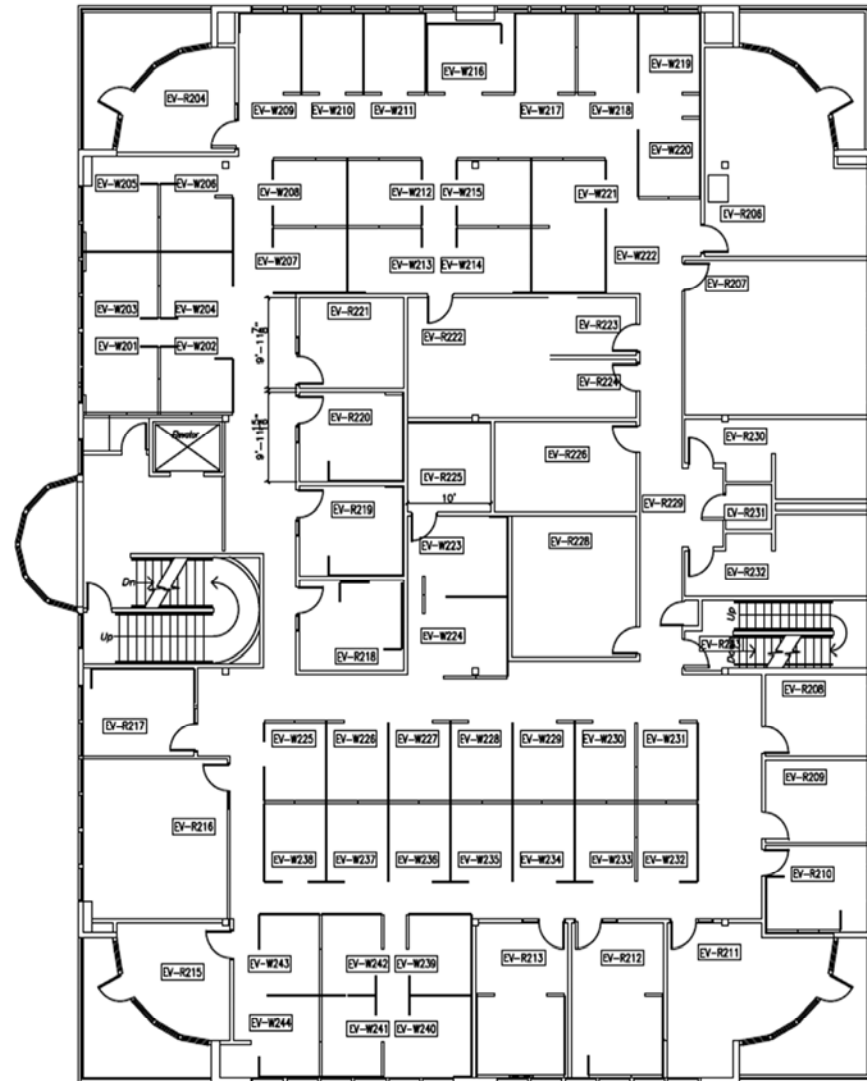
coconnor@nai-psp.com

3RD FLOOR

SUITE 300

11,424 RSF

Divisible to 8,000 SF



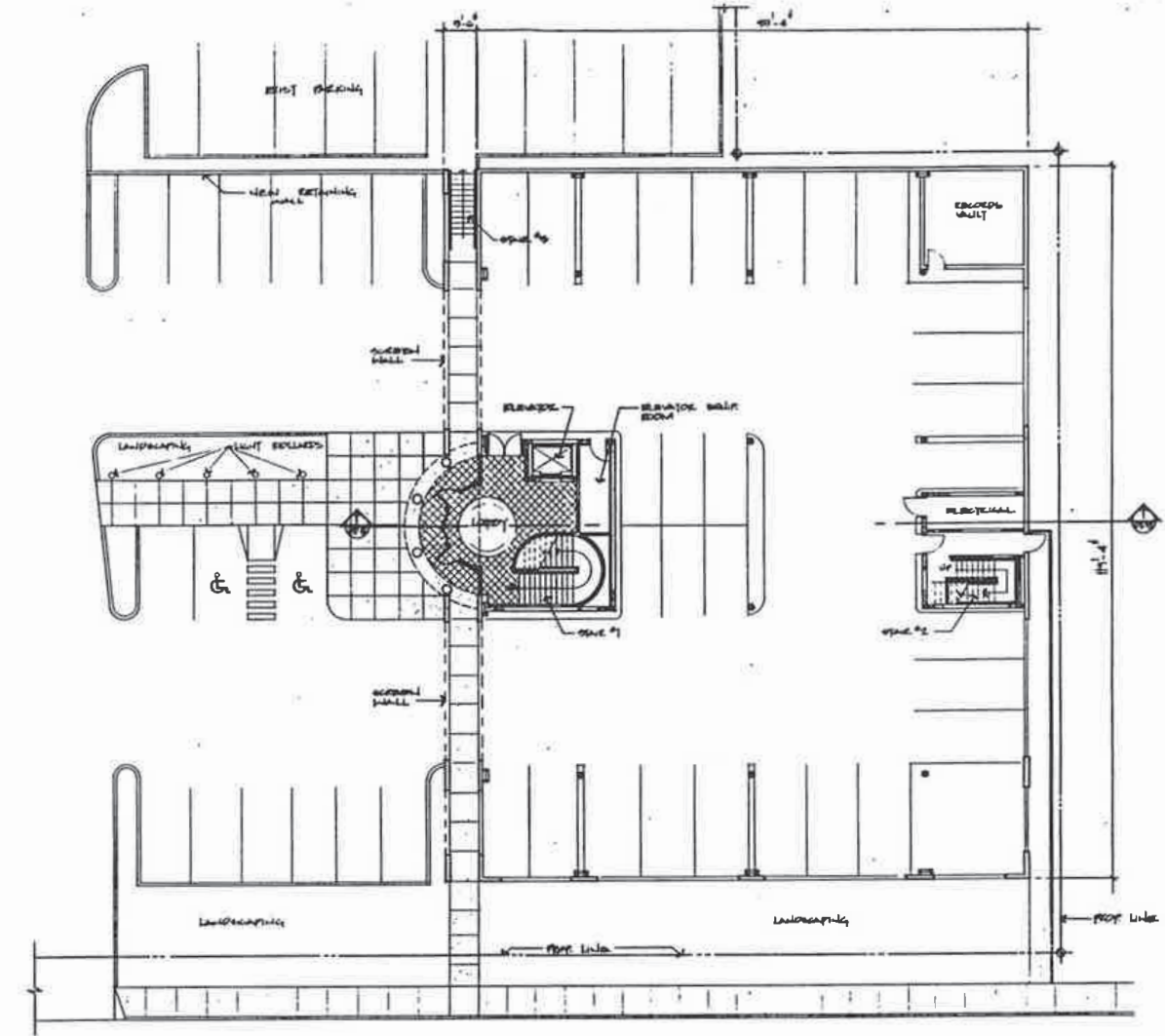
CHRIS O'CONNOR

PRINCIPAL

+1 425 586 5640

coconnor@nai-psp.com

PARKING PLAN



CHRIS O'CONNOR

PRINCIPAL

+1 425 586 5640

coconnor@nai-psp.com





OFFICE SPACE FOR LEASE

JOHNSON OFFICE CENTER

729 100TH ST SE | EVERETT, WA 98208

Exclusively Listed By:

CHRIS O'CONNOR

PRINCIPAL

+1425 586 5640

coconnor@nai-psp.com

nai-psp.com

BELLEVUE | TACOMA

NAI Puget Sound Properties
10900 NE 8th Street, Suite 1500
Bellevue, WA 98004

The information supplied herein is from sources we deem reliable. It is provided without any representation, warranty or guarantee, expressed or implied, as to its accuracy. Prospective Buyer or Tenant should conduct an independent investigation and verification of all matters deemed to be material, including, but not limited to, statements of income and expenses. CONSULT YOUR ATTORNEY, ACCOUNTANT OR OTHER PROFESSIONAL ADVISOR. G:\Shared drives\ADMIN TEAM\MARKETING\FLYERS\Northend\Johnson Business Park\Johnson Office Center

NAI Puget Sound
Properties