

CHASE BANK BUILDING

SPACE FOR LEASE

RICHARD FOX

Broker

509.755.7580

richard.fox@kiemlehgagood.com

**KIEMLE
HAGOOD**

Kiemle Hagood
601 W. Main Avenue, Suite 400
Spokane, WA 99201
509.838.6541 

PROPERTY INFORMATION |

Chase Bank Building

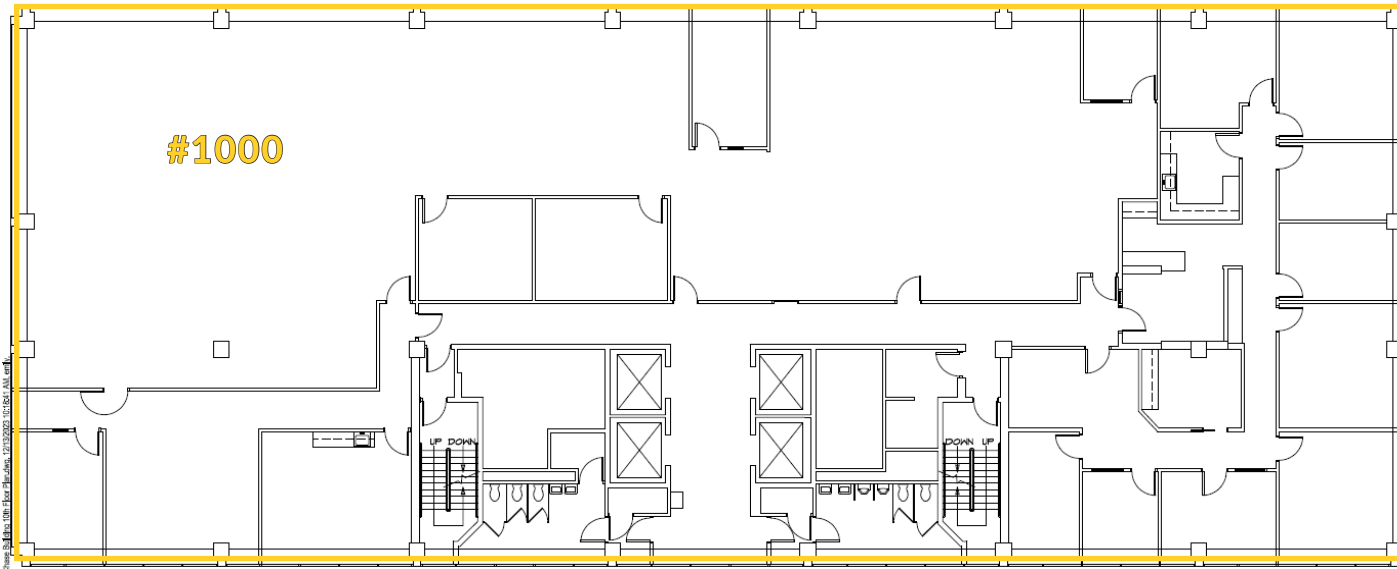
601 W. Main Avenue, Spokane, WA

Address:	601 W. Main Avenue, Spokane, WA 99201
Zoning:	Downtown Core (DTC)
Emergency Generator:	Yes
Secured Access:	Available

PROPERTY HIGHLIGHTS

- Premier CBD location
- Located in the heart of Downtown Spokane
- Walking distance to Riverpark Square, Riverfront Park, The Spokane Arena, The Podium, and One Spokane Stadium
- Jimmy John's and Thomas Hammer on street level
- Surrounded by additional shopping, dining, and entertainment options
- Building conference room
- Fitness center
- Onsite property management
- Convenient access to STA Central City Line
- Part of the Skywalk System





TENTH FLOOR

Suite #1000 | ±12,556 RSF

\$22.00 PSF (\$23,019 / Mo)

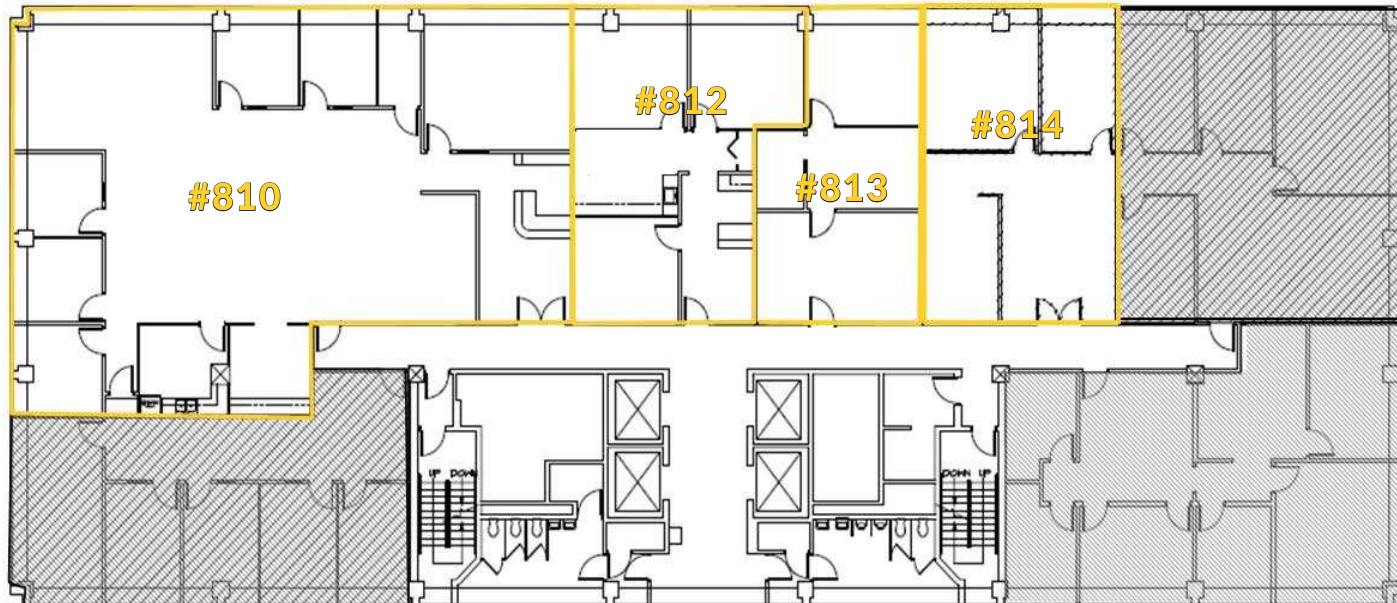
- Open Floor Plan
- Conference Room
 - Break Room

EIGHTH FLOOR

Suite #810 | ±3,519 RSF

\$22.00 PSF (\$6,452 / Mo)

- 5 offices
- Reception Area
 - Break Room
- Conference Room
- Open Work Area



Suite #812 | ±1,104 RSF

\$22.00 PSF (\$2,053 / Mo)

- 3 offices

Suite #813 | ±804 RSF

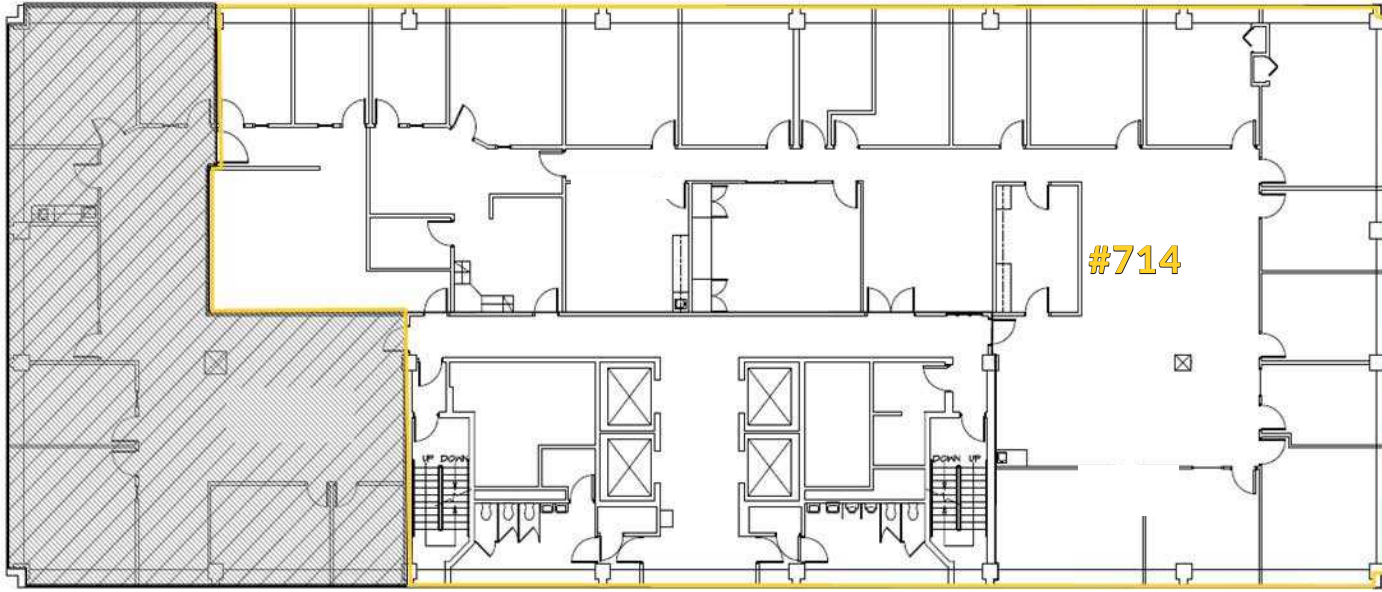
\$22.00 PSF (\$1,474 / Mo)

- 2 offices
- Conference Room

Suite #814 | ±1,059 RSF

\$22.00 PSF (\$1,941.50 / Mo)

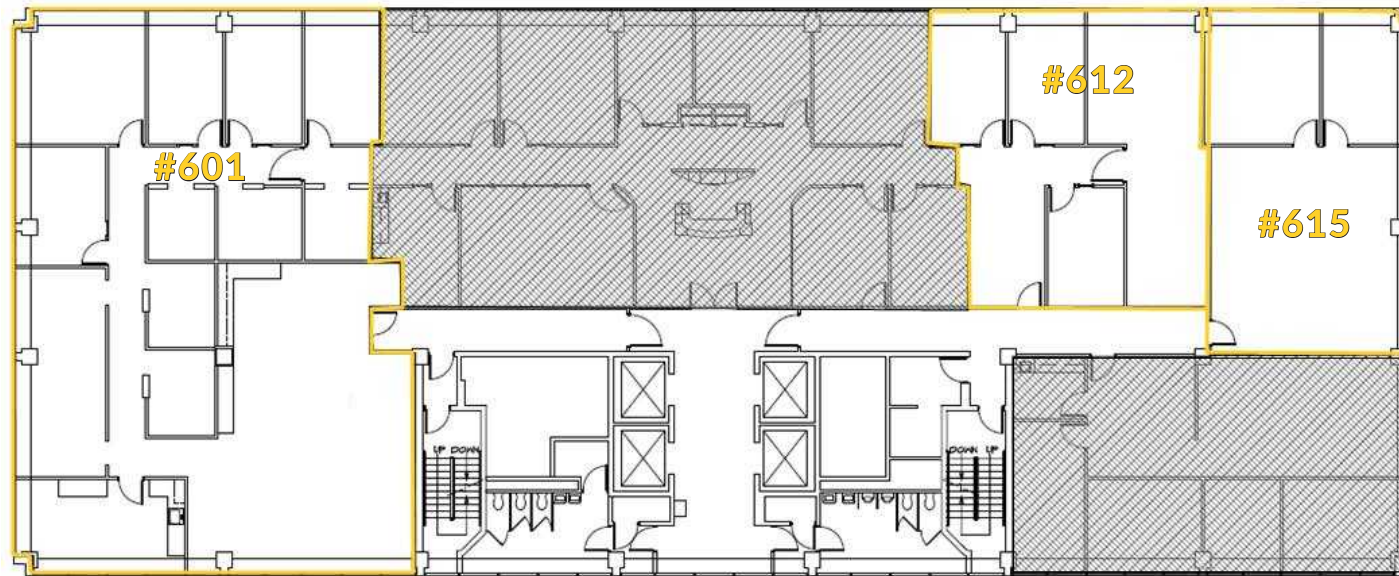
- 2 offices



SEVENTH FLOOR

Suite #714 | ±8,499 RSF
\$22.00 PSF (\$15,582 / Mo)

- 15+ Offices
- Break Room
- Conference Room



SIXTH FLOOR

Suite #601 | ±7,179 RSF
\$22.00 PSF (\$7,179 / Mo)

- Multiple Offices
- Break & Conference Rooms
- Open Work Area

Suite #612 | ±1,390 RSF
\$22.00 PSF (\$2,548 / Mo)

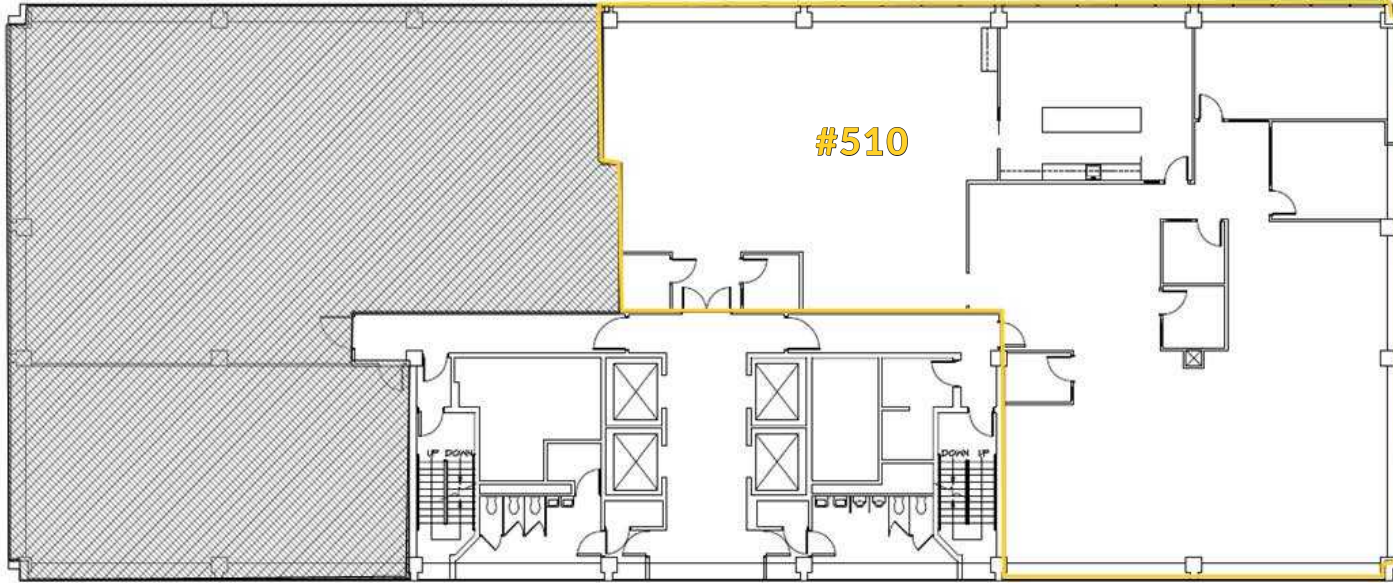
- 2 offices
- Conference Room

Suite #615 | ±1,281 RSF
\$22.00 PSF (\$2,349 / Mo)

- 2 offices
- Open Work Area

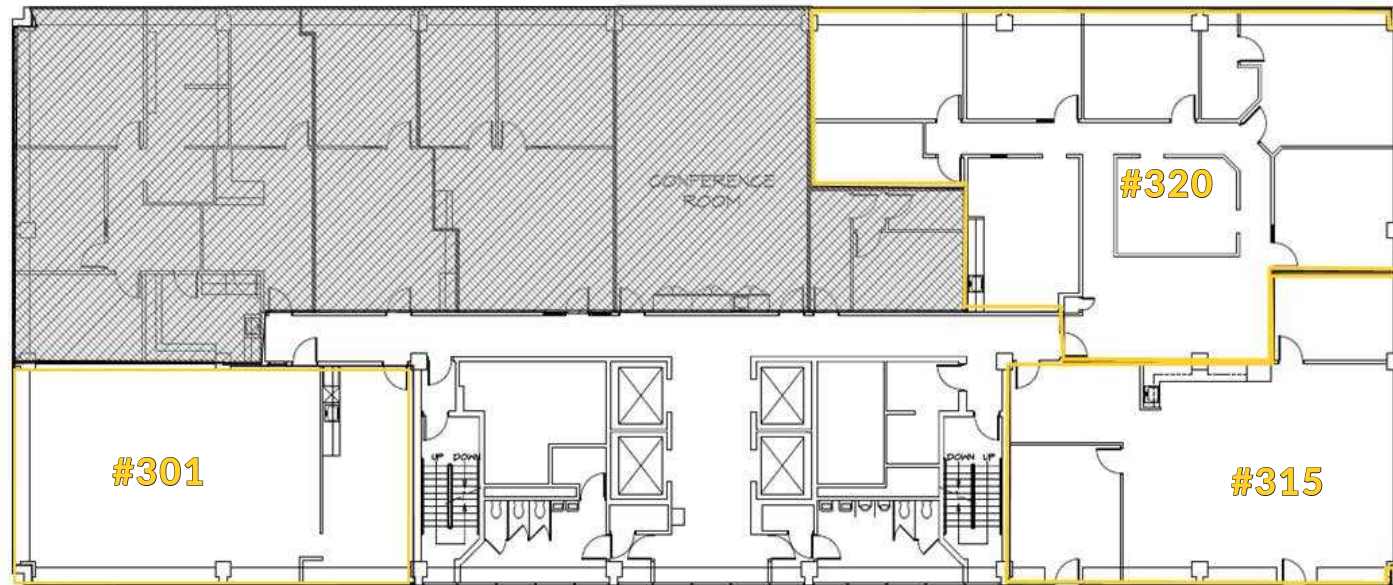
Suite #814 | ±1,059 RSF
\$22.00 PSF (\$1,941.50 / Mo)

- 2 offices



FIFTH FLOOR

- Suite #510 | ±6,248 RSF
\$22.00 PSF (\$11,453 / Mo)
- Open Office Concept
 - Large Breakroom

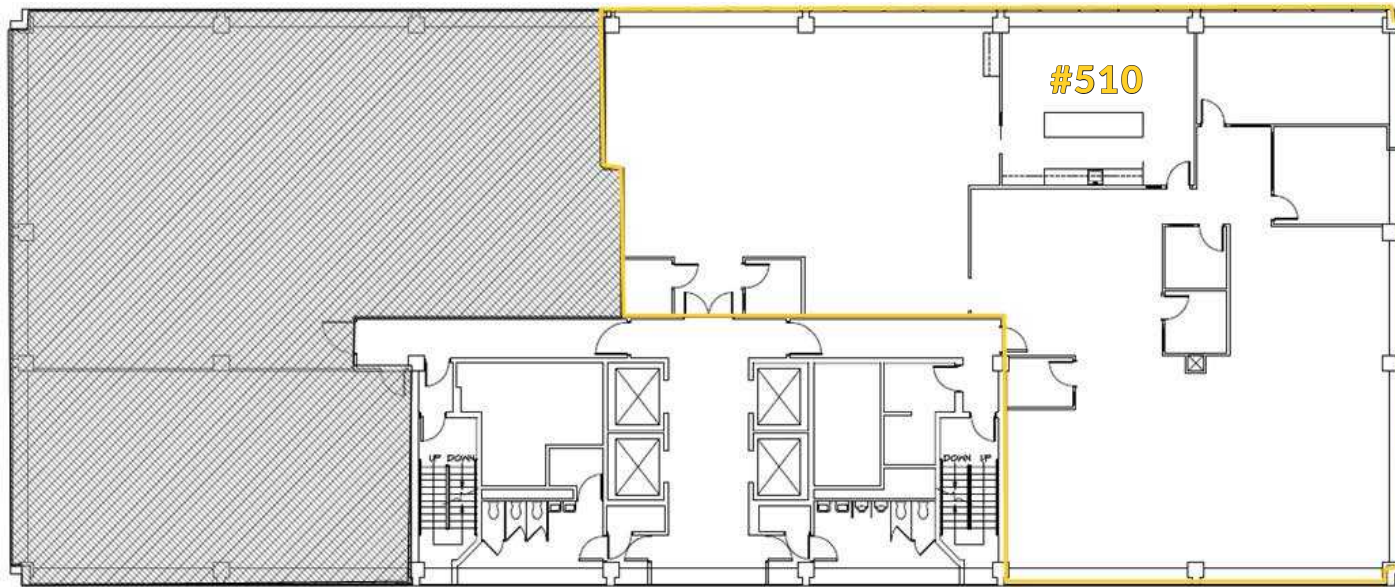


THIRD FLOOR

- Suite #301 | ±1,562 RSF
\$22.00 PSF (\$2,862 / Mo)
- 5 offices
 - Break & Conference Rooms

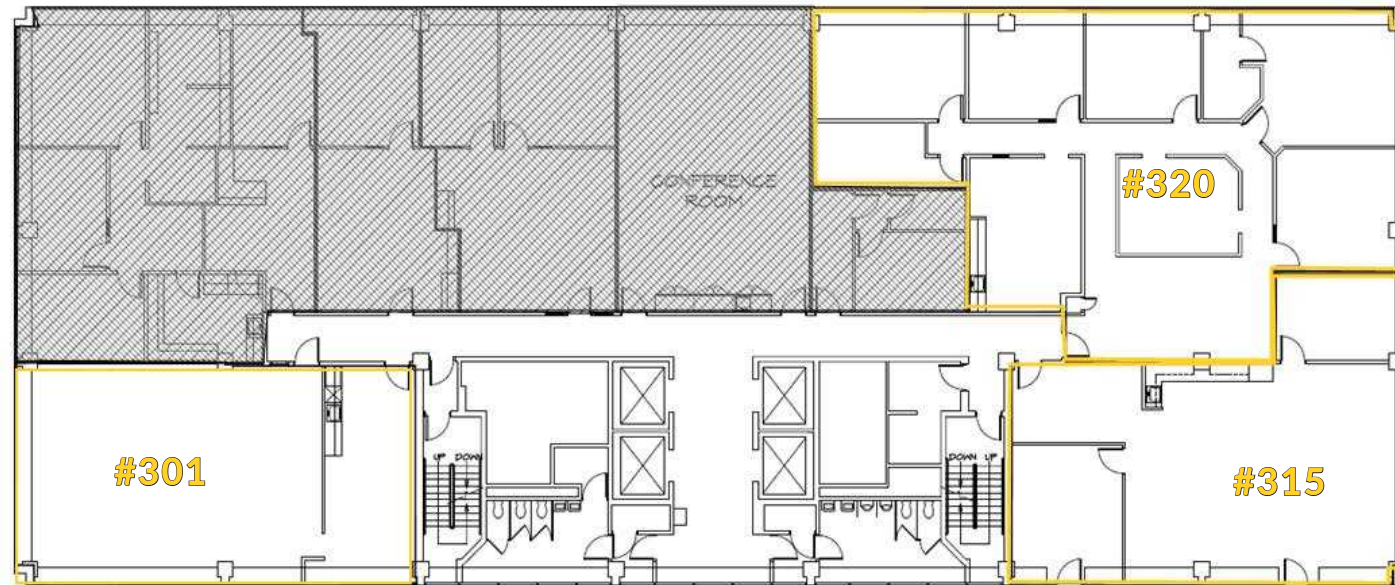
- Suite #315 | ±1,851 RSF
\$22.00 PSF (\$3,394 / Mo)
- 1 Office
 - Conference Room
 - Open Concept
 - Patio Access

- Suite #320 | ±2,992 RSF
\$22.00 PSF (\$5,489 / Mo)
- 5 Offices
 - Break & Conference Rooms



FIFTH FLOOR

- Suite #510 | ±6,248 RSF
 \$22.00 PSF (\$11,453 / Mo)
- Open Office Concept
 - Large Breakroom



THIRD FLOOR

- Suite #301 | ±1,562 RSF
 \$22.00 PSF (\$2,862 / Mo)
- 5 offices
 - Break & Conference Rooms

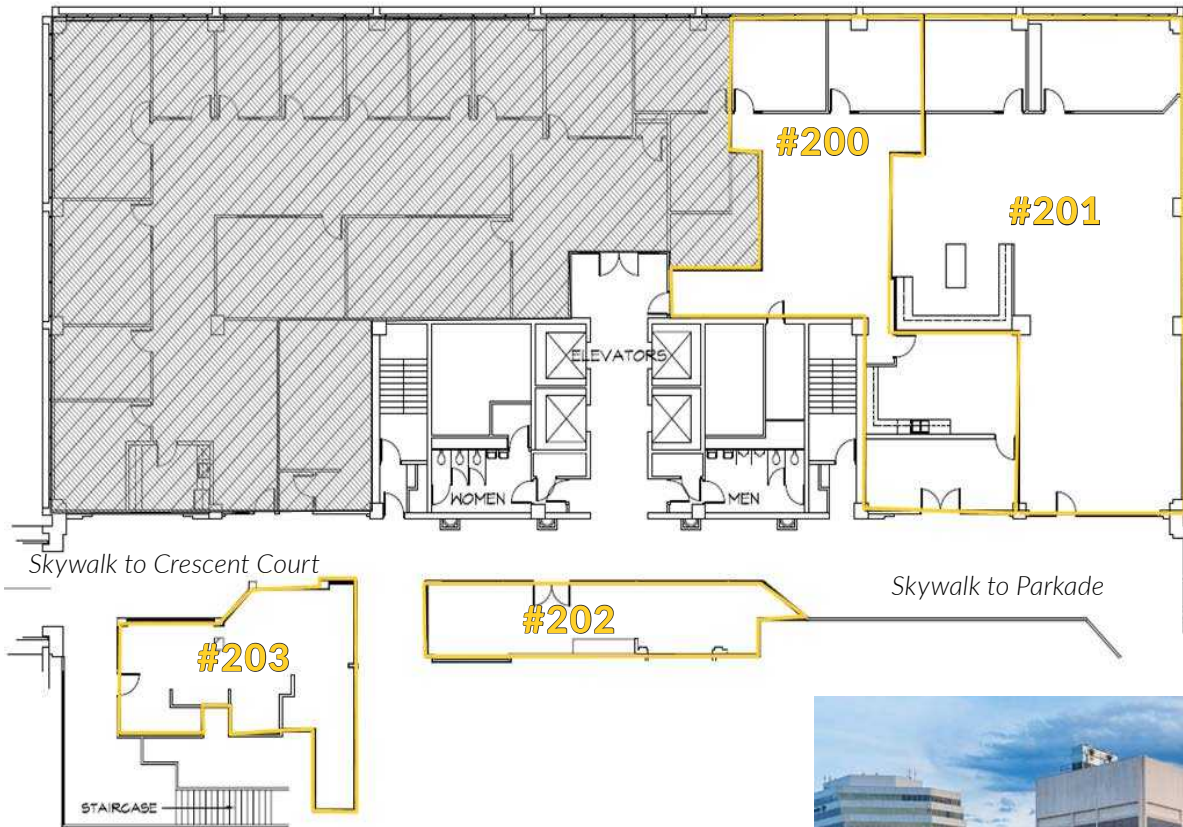
- Suite #315 | ±1,851 RSF
 \$22.00 PSF (\$3,394 / Mo)
- 1 Office
 - Conference Room
 - Open Concept
 - Patio Access

- Suite #320 | ±2,992 RSF
 \$22.00 PSF (\$5,489 / Mo)
- 5 Offices
 - Break & Conference Rooms

SECOND FLOOR

Chase Bank Building

601 W. Main Avenue, Spokane, WA



SECOND FLOOR

Suite #200 | ±1,934 RSF
\$22.00 PSF (\$3,449 / Mo)

- 3 Offices
- Open Floor Plan
- Breakroom

Suite #201 | ±2,835 RSF
\$22.00 PSF (\$5,203 / Mo)

- 2 Offices
- Corner Suite

Suite #202 | ±605 RSF
\$22.00 PSF (\$1,109 / Mo)

- Open Floor Plan
- Skywalk Visibility

Suite #203 | ±778 RSF
\$22.00 PSF (\$1,426 / Mo)

- Open Floor Plan
- Skywalk Visibility



Crescent Building Skywalk



Parkade Skywalk

LOWER LEVEL & FIRST FLOOR

Chase Bank Building

601 W. Main Avenue, Spokane, WA

FIRST FLOOR

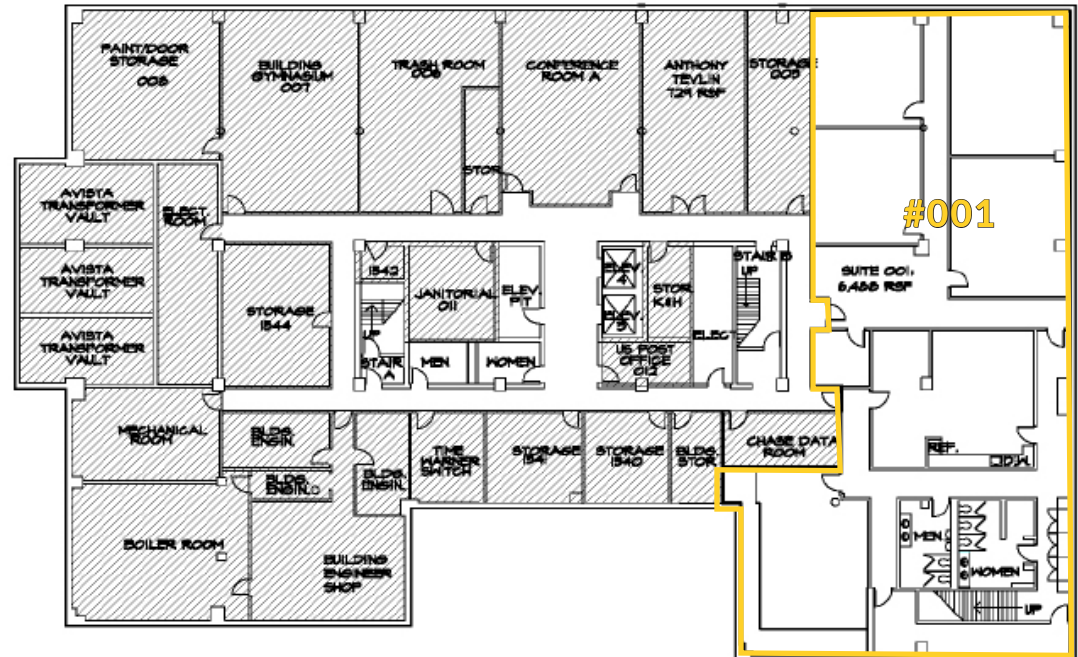
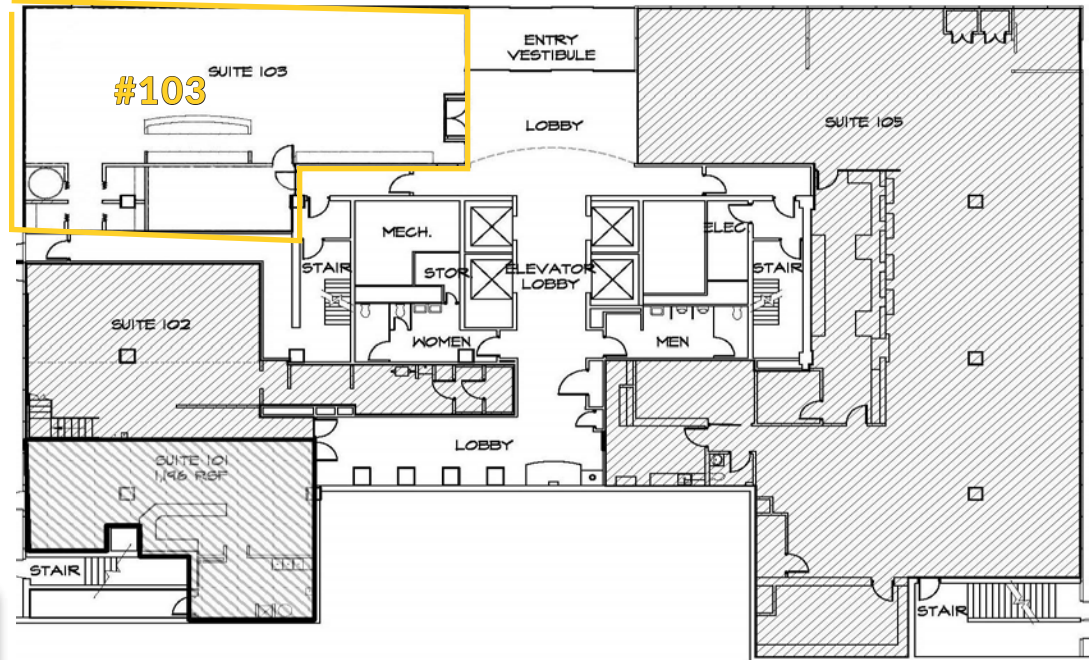
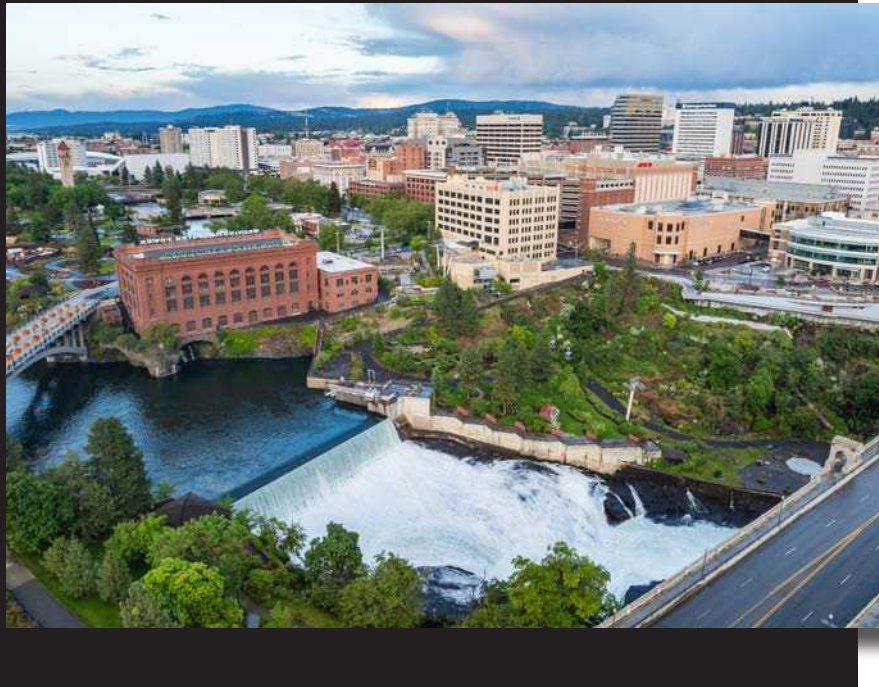
Suite #103 | ±2,401 RSF
\$30.00 PSF (\$6,003 / Mo)

- Ground Floor Retail Fronting Main & Wall
- Exceptional Visibility

LOWER LEVEL

Suite #001 | ±4,899 RSF
\$12.00 PSF (\$4,899 / Mo)

- Multiple Offices
- 3 Private Offices
- Open Floor Plan
- Breakroom



CHASE BANK BUILDING

601 W. Main Avenue
Spokane, Washington 99201

Kiemle Hagood respects the intellectual property of others:

If you believe the copyright in your work has been violated through this Website, please contact our office for notice of claims of copyright infringement. For your complaint to be valid under the Digital Millennium Copyright Act of 1998 (DMCA), you must provide the following information when providing notice of the claimed copyright infringement: Identify the material on the Website that you believe infringes your work, with enough detail so that we may locate it on the Website; provide your address, telephone number and email address; provide a statement that you have a good faith belief that the disputed use is not authorized by the copyright owner, its agent, or the law; provide a statement that the information in the notification is accurate, and under penalty of perjury, that the complaining party is authorized to act on behalf of the owner of an exclusive right that is allegedly infringed; and provide your physical or electronic signature. Upon receiving your complaint, Kiemle Hagood will, upon review, remove content that you believe infringes your copyright if the complaint is found to be valid.

No warranty or representation, expressed or implied, is made by Kiemle Hagood, its agents or its employees as to the accuracy of the information contained herein. All information furnished is from sources deemed reliable and submitted subject to errors, omissions, change of terms and conditions, prior sale, lease or financing, or withdrawal without notice. No one should rely solely on the above information, but instead should conduct their own investigation to independently satisfy themselves.



RICHARD FOX
BROKER

509.755.7580

richard.fox@kiemlehagood.com

601 W MAIN AVENUE, SUITE 400
SPOKANE, WA 99201

KIEMLE
HAGOOD