

FOR SUBLEASE

HOGUM BAY LOGISTICS CENTER

20,000 SF | 8110 31st Ave NE, Lacey, WA



NEWMARK

THAD MALLORY, SIOR
thad.mallory@nmrk.com
425-362-1410

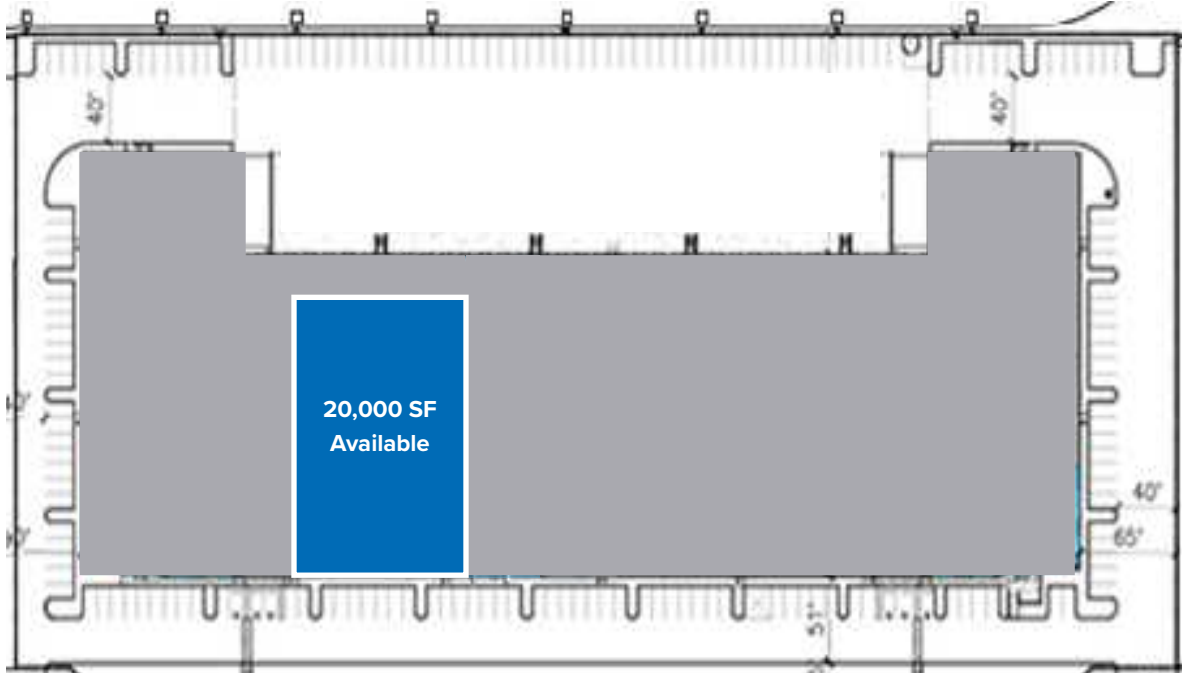
BLAKE BENTZ
blake.bentz@nmrk.com
425-362-1391

FOR SUBLEASE

HOGUM BAY LOGISTICS CENTER

20,000 SF | 8110 31st Ave NE, Lacey, WA

FLOOR PLAN



BUILDING DETAILS

ADDRESS

8110 31st Ave NE, Lacey, WA

TOTAL SF

20,000 SF

CLEAR HEIGHT

32'

LOADING

Subtenant shall have access to dock high loading

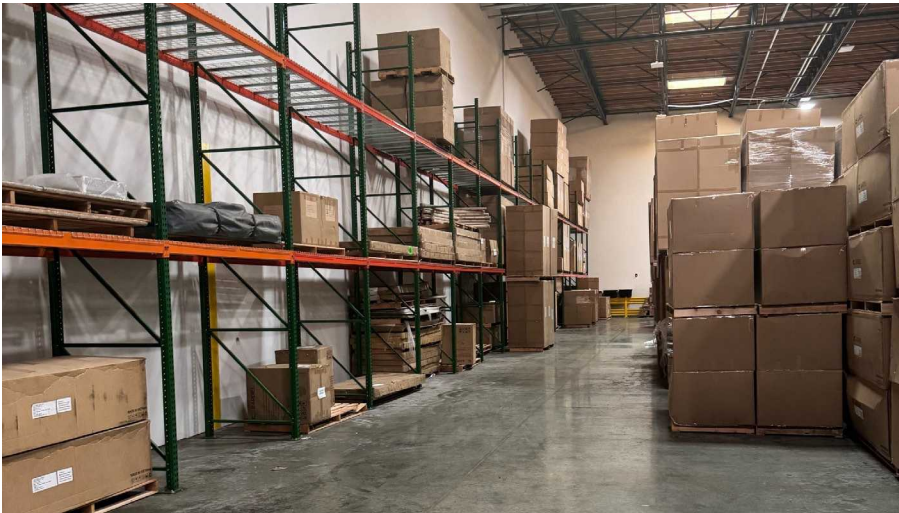
PROPERTY HIGHLIGHTS

- Short term dead storage sublease
- Sublease term through May 31, 2025
- Immediate access to I-5
- Racking available

FOR SUBLEASE

HOGUM BAY LOGISTICS CENTER

20,000 SF | 8110 31st Ave NE, Lacey, WA



FOR SUBLEASE

HOGUM BAY LOGISTICS CENTER

20,000 SF | 8110 31st Ave NE, Lacey, WA



NEWMARK

The information contained herein has been obtained from sources deemed reliable but has not been verified and no guarantee, warranty or representation, either express or implied, is made with respect to such information. Terms of sale or lease and availability are subject to change or withdrawal without notice.