

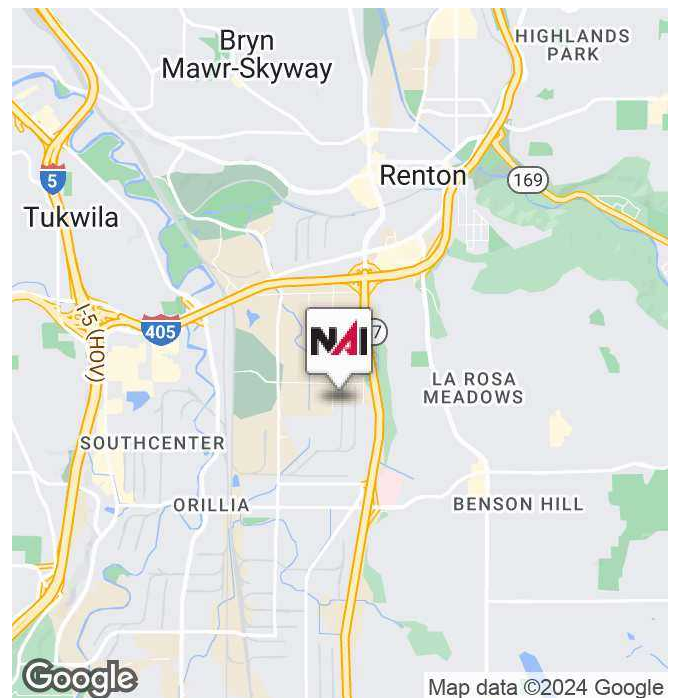


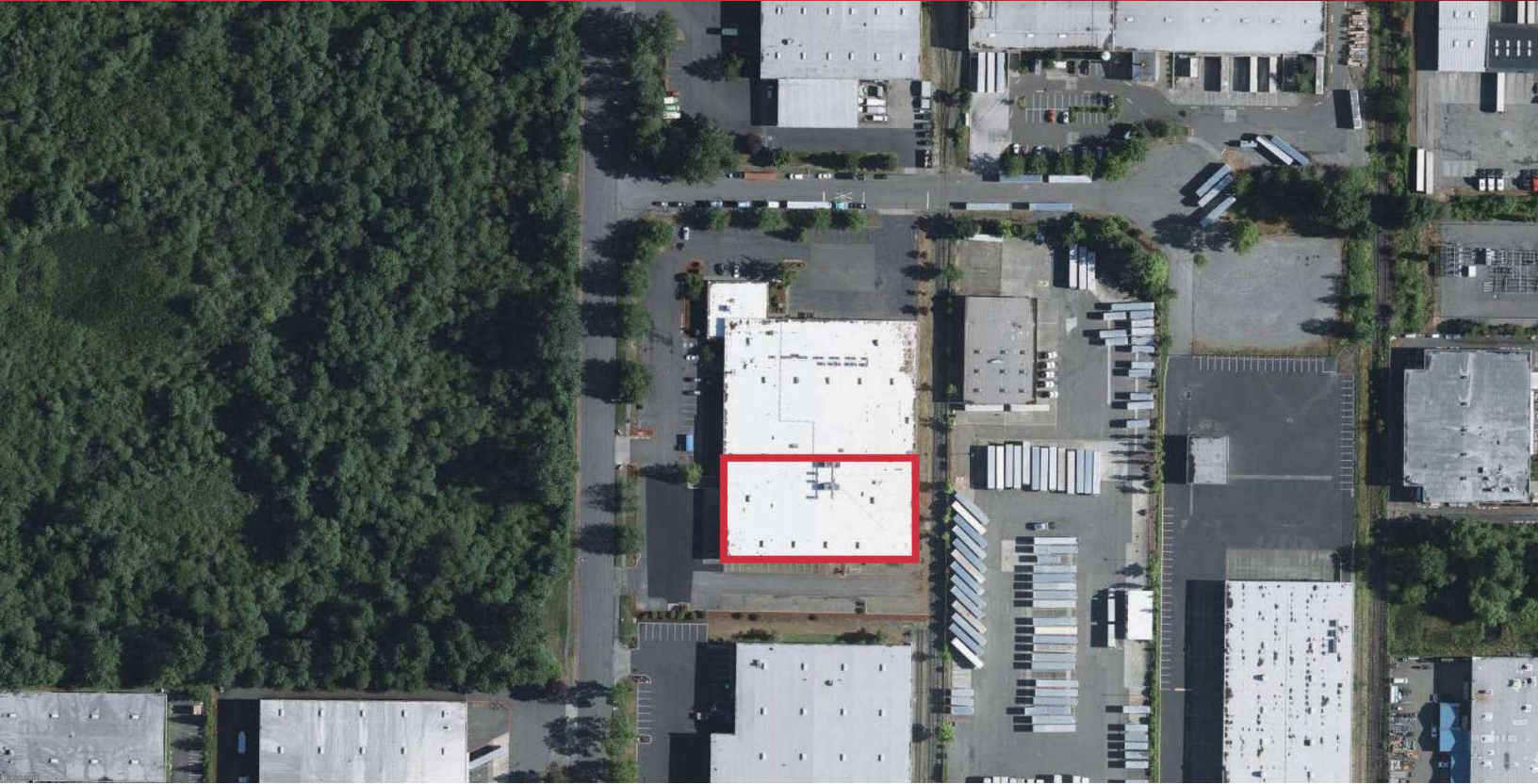
2900 Lind Avenue SW

Renton, Washington 98057

Property Highlights

- 40,000 SF
- 1,350 Mezzanine office
- 18' Clear Height
- 1 Dock High Door
- 2 Oversized Grade Level Doors
- Covered loading platform provides additional Dock High Loading
- \$1.10 PSF Full Service (NNN's, water, gas & electricity included in monthly rent)
- Below market rent - Equal to approximately a \$0.70 shell rate
- Available now





Kent Channing
Partner | 425.586.5628
kchanning@nai-psp.com

