

FOR LEASE

# Willows Business Center



14620 - 14950 NE 95TH ST, REDMOND, WA 98052



**CONNOR GILCHRIST**  
425.274.4286  
gilchrist@broderickgroup.com

**JEFF LIVINGSTON**  
425.274.4288  
livingston@broderickgroup.com

**RAWLEY HOLMBERG**  
425.274.4284  
holmberg@broderickgroup.com

The information contained herein has been given to us by the owner or sources which we deem reliable. We have no reason to doubt its accuracy, but we do not guarantee it. Prospective tenants should carefully verify all information contained herein.

FOR LEASE

# Willows Business Center



14620 - 14950 NE 95TH ST, REDMOND, WA 98052



## Business Park Highlights



Experienced local ownership



On-site property management



Nearby restaurants & amenities



Concrete-tilt construction



No redevelopment clause in Lease Agreements



Abundant parking



**CONNOR GILCHRIST**  
425.274.4286  
gilchrist@broderickgroup.com

**JEFF LIVINGSTON**  
425.274.4288  
livingston@broderickgroup.com

**RAWLEY HOLMBERG**  
425.274.4284  
holmberg@broderickgroup.com

The information contained herein has been given to us by the owner or sources which we deem reliable. We have no reason to doubt its accuracy, but we do not guarantee it. Prospective tenants should carefully verify all information contained herein.

FOR LEASE

# Willows Business Center



14620 - 14950 NE 95TH ST, REDMOND, WA 98052

## Site Plan

### AVAILABLE SPACE

| Building     | 5                             | 5                             | 9                             | 11                          | 12                            |
|--------------|-------------------------------|-------------------------------|-------------------------------|-----------------------------|-------------------------------|
| Suite        | <u>14842</u>                  | <u>14856</u>                  | <u>14746</u>                  | <u>14674</u>                | <u>14636</u>                  |
| Size         | 3,820 SF<br>(1,856 SF Office) | 4,225 SF<br>(1,639 SF Office) | 2,140 SF<br>(1,332 SF Office) | 1,917 SF<br>(566 SF Office) | 5,736 SF<br>(2,702 SF Office) |
| Availability | Now                           | Now                           | 11/1/2024                     | 11/1/2024                   | Now                           |



**CONNOR GILCHRIST**  
425.274.4286  
gilchrist@broderickgroup.com

**JEFF LIVINGSTON**  
425.274.4288  
livingston@broderickgroup.com

**RAWLEY HOLMBERG**  
425.274.4284  
holmberg@broderickgroup.com

The information contained herein has been given to us by the owner or sources which we deem reliable. We have no reason to doubt its accuracy, but we do not guarantee it. Prospective tenants should carefully verify all information contained herein.

FOR LEASE

# Willows Business Center



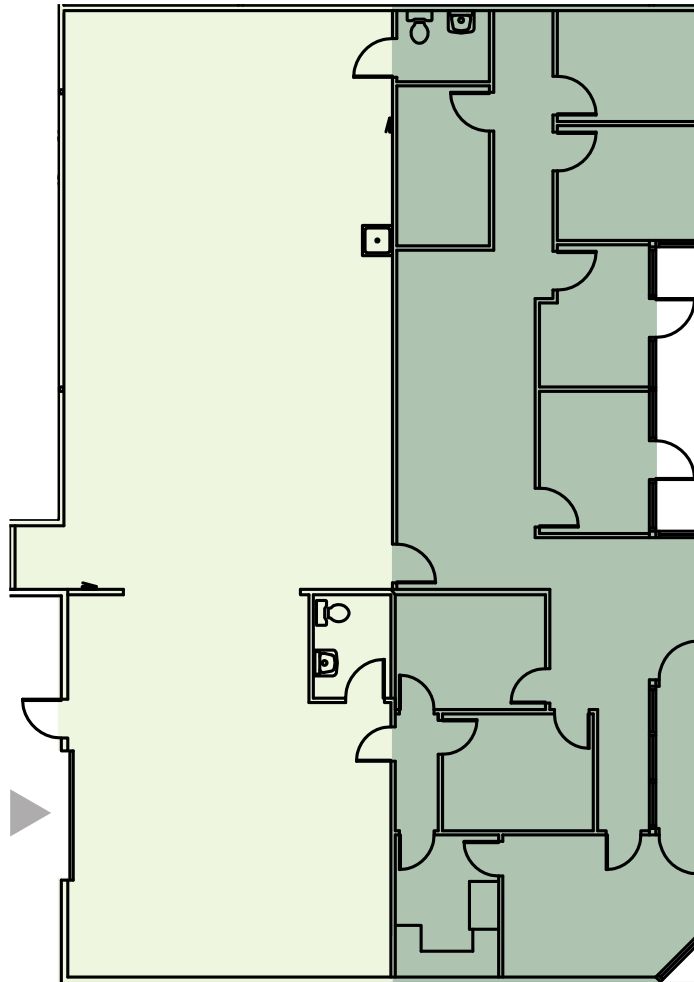
14620 - 14950 NE 95TH ST, REDMOND, WA 98052

## BUILDING 5 - SUITE 14842

Available Now  
Warehouse

1,856 SF Office  
**3,820 SF Total**

- OFFICE
- WAREHOUSE
- GRADE-LEVEL LOADING



**CONNOR GILCHRIST**  
425.274.4286  
gilchrist@broderickgroup.com

**JEFF LIVINGSTON**  
425.274.4288  
livingston@broderickgroup.com

**RAWLEY HOLMBERG**  
425.274.4284  
holmberg@broderickgroup.com

The information contained herein has been given to us by the owner or sources which we deem reliable. We have no reason to doubt its accuracy, but we do not guarantee it. Prospective tenants should carefully verify all information contained herein.

FOR LEASE

# Willows Business Center



14620 - 14950 NE 95TH ST, REDMOND, WA 98052

## BUILDING 5 - SUITE 14856

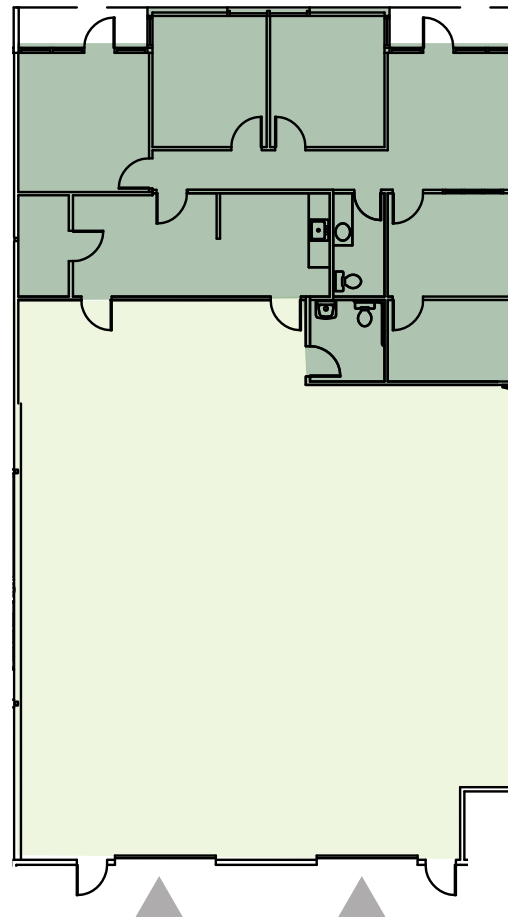
Available Now

2,586 SF Warehouse

1,639 SF Office

**4,225 SF Total**

-  OFFICE
-  WAREHOUSE
-  GRADE-LEVEL LOADING



**CONNOR GILCHRIST**  
425.274.4286  
gilchrist@broderickgroup.com

**JEFF LIVINGSTON**  
425.274.4288  
livingston@broderickgroup.com

**RAWLEY HOLMBERG**  
425.274.4284  
holmberg@broderickgroup.com

The information contained herein has been given to us by the owner or sources which we deem reliable. We have no reason to doubt its accuracy, but we do not guarantee it. Prospective tenants should carefully verify all information contained herein.

FOR LEASE

# Willows Business Center



14620 - 14950 NE 95TH ST, REDMOND, WA 98052

## BUILDING 9 - SUITE 14746



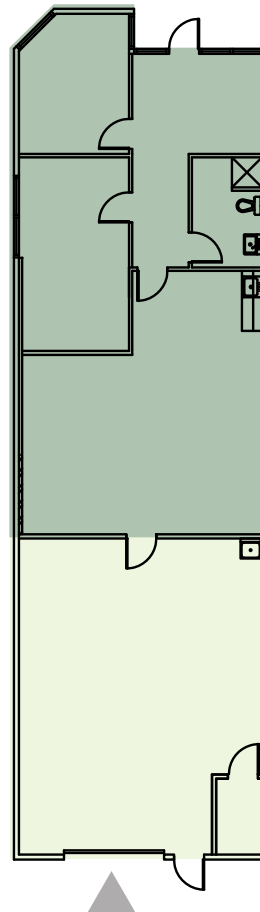
Available 11/1/2024

808 SF Warehouse

1,332 SF Office

**2,140 SF Total**

-  OFFICE
-  WAREHOUSE
-  GRADE-LEVEL LOADING



**CONNOR GILCHRIST**  
425.274.4286  
gilchrist@broderickgroup.com

**JEFF LIVINGSTON**  
425.274.4288  
livingston@broderickgroup.com

**RAWLEY HOLMBERG**  
425.274.4284  
holmberg@broderickgroup.com

The information contained herein has been given to us by the owner or sources which we deem reliable. We have no reason to doubt its accuracy, but we do not guarantee it. Prospective tenants should carefully verify all information contained herein.

FOR LEASE

# Willows Business Center



14620 - 14950 NE 95TH ST, REDMOND, WA 98052

## BUILDING 11 - SUITE 14674

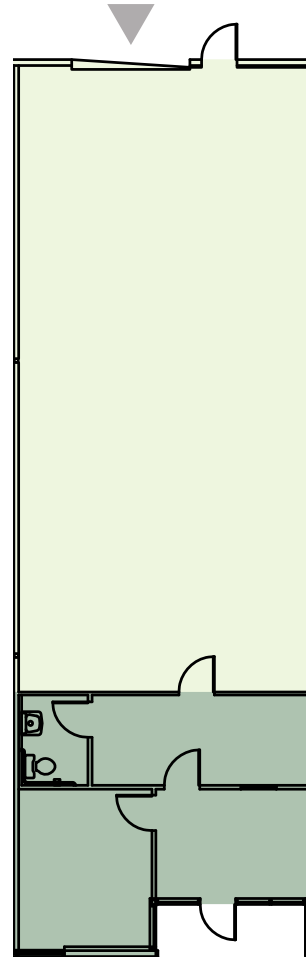
Available 11/1/2024

1,351 SF Warehouse

566 SF Office

**1,917 SF Total**

-  OFFICE
-  WAREHOUSE
-  GRADE-LEVEL LOADING



**CONNOR GILCHRIST**  
425.274.4286  
gilchrist@broderickgroup.com

**JEFF LIVINGSTON**  
425.274.4288  
livingston@broderickgroup.com

**RAWLEY HOLMBERG**  
425.274.4284  
holmberg@broderickgroup.com

The information contained herein has been given to us by the owner or sources which we deem reliable. We have no reason to doubt its accuracy, but we do not guarantee it. Prospective tenants should carefully verify all information contained herein.

FOR LEASE

# Willows Business Center



14620 - 14950 NE 95TH ST, REDMOND, WA 98052

## BUILDING 12 - SUITE 14636

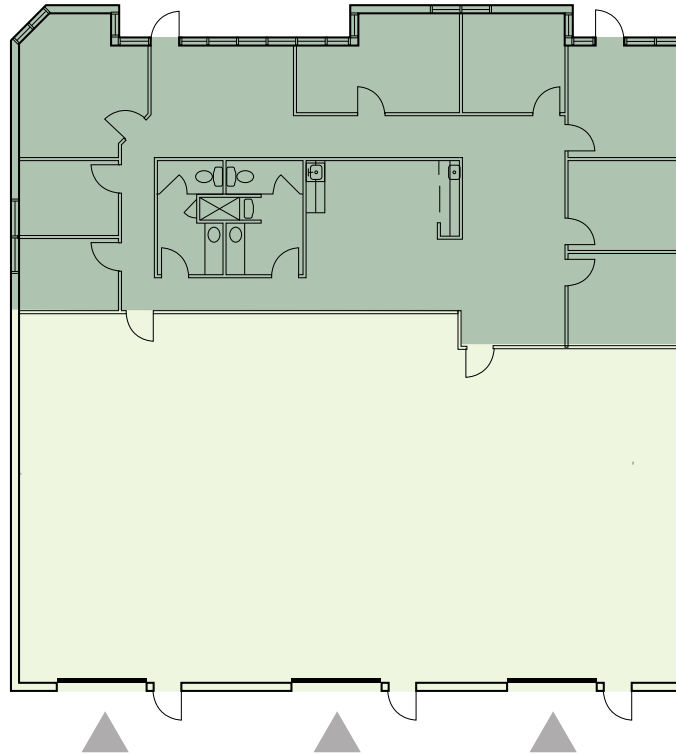


Available Now

3,034 SF Warehouse

2,702 SF Office

**5,736 SF Total**



- OFFICE
- WAREHOUSE
- GRADE-LEVEL LOADING

[CLICK TO TAKE A VIRTUAL TOUR](#)



**CONNOR GILCHRIST**  
425.274.4286  
gilchrist@broderickgroup.com

**JEFF LIVINGSTON**  
425.274.4288  
livingston@broderickgroup.com

**RAWLEY HOLMBERG**  
425.274.4284  
holmberg@broderickgroup.com

The information contained herein has been given to us by the owner or sources which we deem reliable. We have no reason to doubt its accuracy, but we do not guarantee it. Prospective tenants should carefully verify all information contained herein.



FOR LEASE

# Willows Business Center



14620 - 14950 NE 95TH ST, REDMOND, WA 98052



## NEARBY AMENITIES

1. Firecreek Grill
2. Willows Run Golf Complex
3. La Cherie Bakery
4. Pasta ya Gotcha
5. Willows Deli
6. Big Block Brewing
7. Eastside Gym
8. Black Raven Brewing
9. Zuacer Pizza
10. Subway

**5 MINUTES** TO REDMOND TOWN CENTER

**7 MINUTES** TO TOTEM LAKE MALL



**CONNOR GILCHRIST**  
425.274.4286  
gilchrist@broderickgroup.com

**JEFF LIVINGSTON**  
425.274.4288  
livingston@broderickgroup.com

**RAWLEY HOLMBERG**  
425.274.4284  
holmberg@broderickgroup.com

The information contained herein has been given to us by the owner or sources which we deem reliable. We have no reason to doubt its accuracy, but we do not guarantee it. Prospective tenants should carefully verify all information contained herein.