

FOR LEASE

Willows Business Center



Northwest Building LLC

14620 - 14950 NE 95TH ST, REDMOND, WA 98052



CONNOR GILCHRIST
425.274.4286
gilchrist@broderickgroup.com

JEFF LIVINGSTON
425.274.4288
livingston@broderickgroup.com

RAWLEY HOLMBERG
425.274.4284
holmberg@broderickgroup.com

The information contained herein has been given to us by the owner or sources which we deem reliable. We have no reason to doubt its accuracy, but we do not guarantee it. Prospective tenants should carefully verify all information contained herein.

FOR LEASE

Willows Business Center



14620 - 14950 NE 95TH ST, REDMOND, WA 98052



Business Park Highlights



Experienced local ownership



On-site property management



Nearby restaurants & amenities



Concrete-tilt construction



No redevelopment clause in Lease Agreements



Abundant parking



CONNOR GILCHRIST
425.274.4286
gilchrist@broderickgroup.com

JEFF LIVINGSTON
425.274.4288
livingston@broderickgroup.com

RAWLEY HOLMBERG
425.274.4284
holmberg@broderickgroup.com

The information contained herein has been given to us by the owner or sources which we deem reliable. We have no reason to doubt its accuracy, but we do not guarantee it. Prospective tenants should carefully verify all information contained herein.

FOR LEASE

Willows Business Center



14620 - 14950 NE 95TH ST, REDMOND, WA 98052

Site Plan

AVAILABLE SPACE

Building	5	5	9	11	12
Suite	<u>14842</u>	<u>14856</u>	<u>14746</u>	<u>14674</u>	<u>14636</u>
Size	3,820 SF (1,856 SF Office)	4,225 SF (1,639 SF Office)	2,140 SF (1,332 SF Office)	1,917 SF (566 SF Office)	5,736 SF (2,702 SF Office)
Availability	Now	Now	11/1/2024	11/1/2024	Now



CONNOR GILCHRIST
425.274.4286
gilchrist@broderickgroup.com

JEFF LIVINGSTON
425.274.4288
livingston@broderickgroup.com

RAWLEY HOLMBERG
425.274.4284
holmberg@broderickgroup.com

The information contained herein has been given to us by the owner or sources which we deem reliable. We have no reason to doubt its accuracy, but we do not guarantee it. Prospective tenants should carefully verify all information contained herein.

FOR LEASE

Willows Business Center



14620 - 14950 NE 95TH ST, REDMOND, WA 98052

BUILDING 5 - SUITE 14842

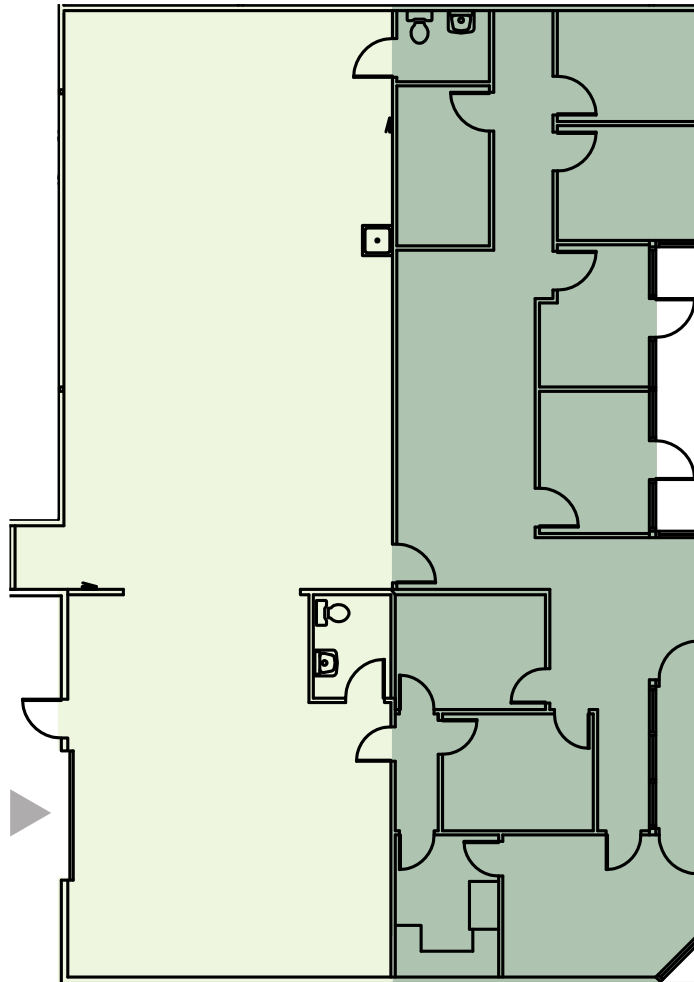
Available Now

Warehouse

1,856 SF Office

3,820 SF Total

-  OFFICE
-  WAREHOUSE
-  GRADE-LEVEL LOADING



CONNOR GILCHRIST
425.274.4286
gilchrist@broderickgroup.com

JEFF LIVINGSTON
425.274.4288
livingston@broderickgroup.com

RAWLEY HOLMBERG
425.274.4284
holmberg@broderickgroup.com

The information contained herein has been given to us by the owner or sources which we deem reliable. We have no reason to doubt its accuracy, but we do not guarantee it. Prospective tenants should carefully verify all information contained herein.

FOR LEASE

Willows Business Center



14620 - 14950 NE 95TH ST, REDMOND, WA 98052

BUILDING 5 - SUITE 14856

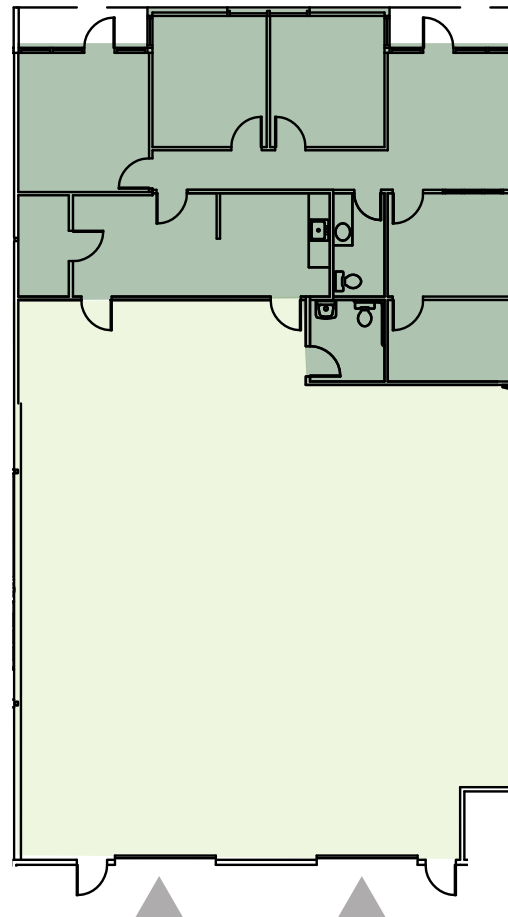
Available Now

2,586 SF Warehouse

1,639 SF Office

4,225 SF Total

-  OFFICE
-  WAREHOUSE
-  GRADE-LEVEL LOADING



CONNOR GILCHRIST
425.274.4286
gilchrist@broderickgroup.com

JEFF LIVINGSTON
425.274.4288
livingston@broderickgroup.com

RAWLEY HOLMBERG
425.274.4284
holmberg@broderickgroup.com

The information contained herein has been given to us by the owner or sources which we deem reliable. We have no reason to doubt its accuracy, but we do not guarantee it. Prospective tenants should carefully verify all information contained herein.

FOR LEASE

Willows Business Center



14620 - 14950 NE 95TH ST, REDMOND, WA 98052

BUILDING 9 - SUITE 14746



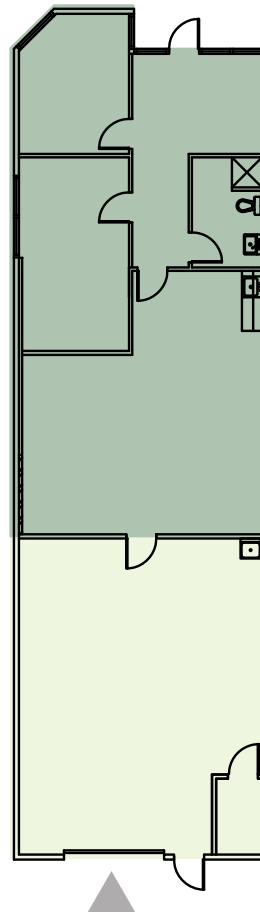
Available 11/1/2024

808 SF Warehouse

1,332 SF Office

2,140 SF Total

-  OFFICE
-  WAREHOUSE
-  GRADE-LEVEL LOADING



CONNOR GILCHRIST
425.274.4286
gilchrist@broderickgroup.com

JEFF LIVINGSTON
425.274.4288
livingston@broderickgroup.com

RAWLEY HOLMBERG
425.274.4284
holmberg@broderickgroup.com

The information contained herein has been given to us by the owner or sources which we deem reliable. We have no reason to doubt its accuracy, but we do not guarantee it. Prospective tenants should carefully verify all information contained herein.

FOR LEASE

Willows Business Center



14620 - 14950 NE 95TH ST, REDMOND, WA 98052


BUILDING 11 - SUITE 14674

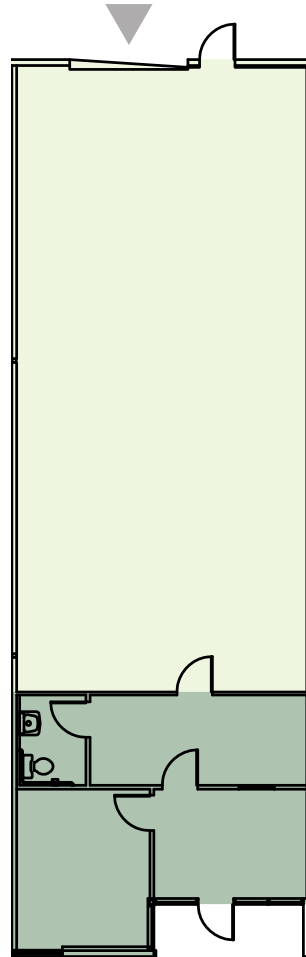
Available 11/1/2024

1,351 SF Warehouse

566 SF Office

1,917 SF Total

-  OFFICE
-  WAREHOUSE
-  GRADE-LEVEL LOADING



CONNOR GILCHRIST
425.274.4286
gilchrist@broderickgroup.com

JEFF LIVINGSTON
425.274.4288
livingston@broderickgroup.com

RAWLEY HOLMBERG
425.274.4284
holmberg@broderickgroup.com

The information contained herein has been given to us by the owner or sources which we deem reliable. We have no reason to doubt its accuracy, but we do not guarantee it. Prospective tenants should carefully verify all information contained herein.

FOR LEASE

Willows Business Center



14620 - 14950 NE 95TH ST, REDMOND, WA 98052

BUILDING 12 - SUITE 14636

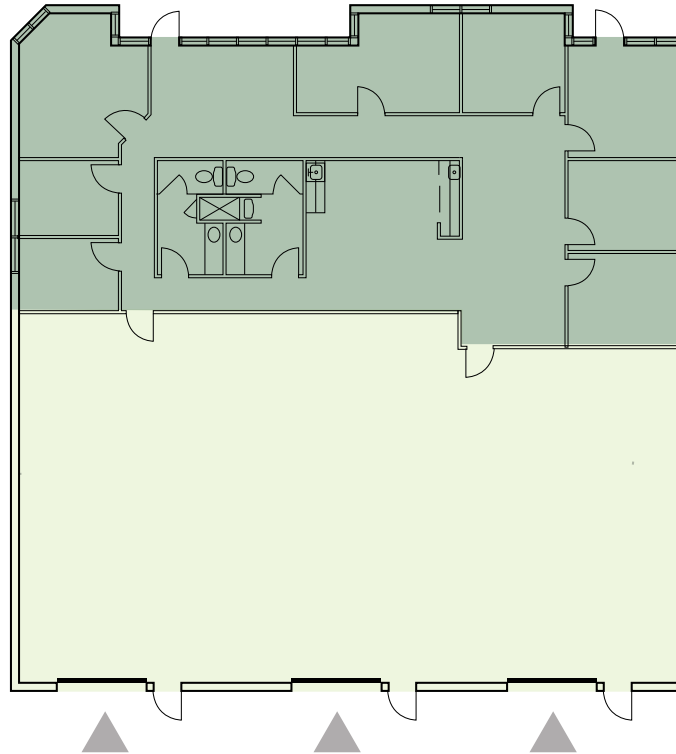


Available Now

3,034 SF Warehouse

2,702 SF Office

5,736 SF Total



- OFFICE
- WAREHOUSE
- GRADE-LEVEL LOADING

[CLICK TO TAKE A VIRTUAL TOUR](#)



CONNOR GILCHRIST
425.274.4286
gilchrist@broderickgroup.com

JEFF LIVINGSTON
425.274.4288
livingston@broderickgroup.com

RAWLEY HOLMBERG
425.274.4284
holmberg@broderickgroup.com

The information contained herein has been given to us by the owner or sources which we deem reliable. We have no reason to doubt its accuracy, but we do not guarantee it. Prospective tenants should carefully verify all information contained herein.

FOR LEASE

Willows Business Center



14620 - 14950 NE 95TH ST, REDMOND, WA 98052



NEARBY AMENITIES

1. Firecreek Grill
2. Willows Run Golf Complex
3. La Cherie Bakery
4. Pasta ya Gotcha
5. Willows Deli
6. Big Block Brewing
7. Eastside Gym
8. Black Raven Brewing
9. Zuacer Pizza
10. Subway

5 MINUTES TO REDMOND TOWN CENTER

7 MINUTES TO TOTEM LAKE MALL



CONNOR GILCHRIST
425.274.4286
gilchrist@broderickgroup.com

JEFF LIVINGSTON
425.274.4288
livingston@broderickgroup.com

RAWLEY HOLMBERG
425.274.4284
holmberg@broderickgroup.com

The information contained herein has been given to us by the owner or sources which we deem reliable. We have no reason to doubt its accuracy, but we do not guarantee it. Prospective tenants should carefully verify all information contained herein.