

# BRIDGE POINT TACOMA 2MM

bridgepointtacoma2mm.com | 5802 S Burlington Way | Tacoma, WA 98409



## ACCESS. SIZE. FLEXIBILITY.

INTRODUCING ONE OF PUGET SOUND'S NEXT MAJOR INDUSTRIAL DEVELOPMENTS, JUST MINUTES FROM INTERSTATE 5 AND THE PORT OF TACOMA

**AVAILABLE Q3 2025 - Q1 2026**



[VIEW PROPERTY](#)

### TODD CLARKE

todd.clarke@kidder.com  
253.722.1422

### MATT MURRAY

matt.murray@kidder.com  
206.248.6541

### TY CLARKE

ty.clarke@kidder.com  
253.722.1419

### MATT MCLENNAN, SIOR, CCIM

matt.mclennan@kidder.com  
253.722.1458





# SPECULATIVE DESIGN | 4-BUILDING OPTION



## BUILDING A

- 520,613 building SF
- 115DH / 4GL
- ±227 trailer spaces
- ±323 car spaces
- 40' clear height
- Available late Q3 2025

## BUILDING B

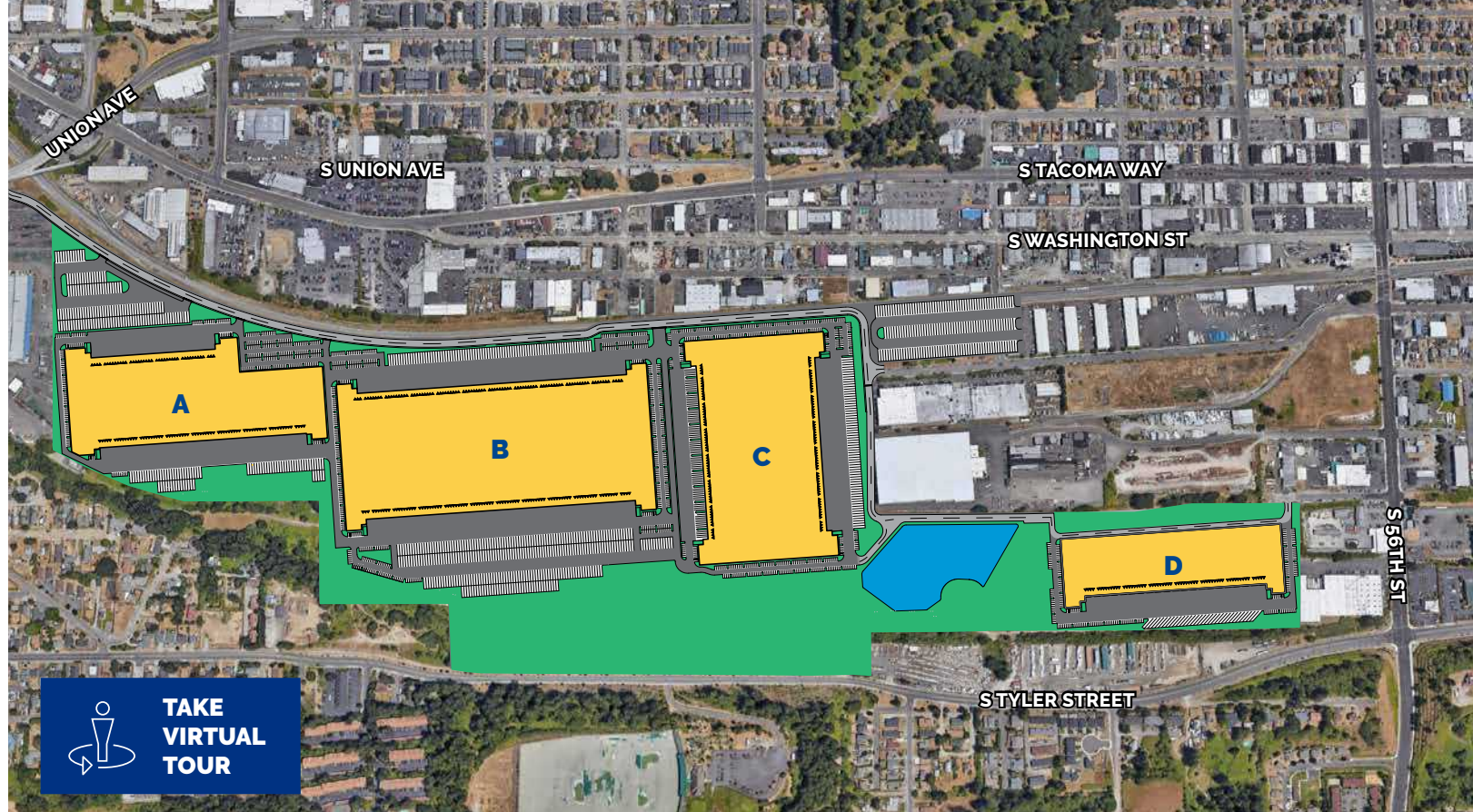
- 960,682 building SF
- 186DH / 4GL
- ±397 trailer spaces
- ±502 car spaces
- 40' clear height
- Available Q3 2025

## BUILDING C

- 664,657 building SF
- 122DH / 4GL
- ±235 trailer spaces
- ±331 car spaces
- 40' clear height
- Available Q1 2026

## BUILDING D

- 323,526 building SF
- 63DH / 2GL
- ±32 trailer spaces
- ±193 car spaces
- 40' clear height
- Available Q1 2026



**ZONING CODE**

**ZONING MAP**



**±160 AC**  
SITE AREA



**±2.5M SF**  
BUILDING AREA



**1,349**  
PARKING SPACES



**486DH/14GL**  
DOOR POSITIONS



**891**  
TRAILER PARKING

bridgepointtacoma2mm.com | 5802 S Burlington Way | Tacoma, WA

This information supplied herein is from sources we deem reliable. It is provided without any representation, warranty, or guarantee, expressed or implied as to its accuracy. Prospective Buyer or Tenant should conduct an independent investigation and verification of all matters deemed to be material, including, but not limited to, statements of income and expenses. Consult your attorney, accountant, or other professional advisor.





TO INTERSTATE 5

**1 mile**  
**4 minutes**

TO PORT OF TACOMA

**5 miles**  
**10 minutes**

TO WA-16

**1 mile**  
**3 minutes**

## HIGHLIGHTS

Conveniently located just 5 miles from the Port of Tacoma, Bridge Point Tacoma 2MM offers excellent exposure with direct access to Interstate 5





# 51 MILLION+ SF WORLDWIDE

BRIDGE is a vertically integrated real estate operating company and investment manager focused on the ACQUISITION and DEVELOPMENT of CLASS A INDUSTRIAL PROPERTIES in supply-constrained CORE markets in the U.S. and the U.K.

Our people EMBRACE COMPLEXITY and execute with CREATIVITY AND CERTAINTY. The results of our expertise and efforts are exceptional investor returns on irreplaceable industrial assets.



AWARDS	
New Good Neighbor, NJ Business & Industry Association	2021
Industrial Project of the Year, SFBJ	2020, 2018
Industrial Speculative Development of the Year, NAIOP Chicago	2020, 2019, 2018, 2017
Deal of the Year, NAIOP New Jersey	2020, 2018
Most Significant Industrial Transaction of the Year, IREJ	2019
Developer of the Year, NAIOP South Florida	2019, 2018, 2016
Developer of the Year, NAIOP Chicago	2019, 2015
Community Appearance Award, City of Fort Lauderdale	2019, 2018
Developer of the Year, Chicago Commercial Real Estate Awards	2018, 2015, 2011
Project of the Year, NAIOP South Florida	2017
Industrial Redevelopment of the Year, NAIOP Chicago	2015, 2014

## HEADQUARTERS

9525 W. Bryn Mawr Ave., Rosemont, IL 60018 | 312 683 7230

[www.bridgeindustrial.com](http://www.bridgeindustrial.com)