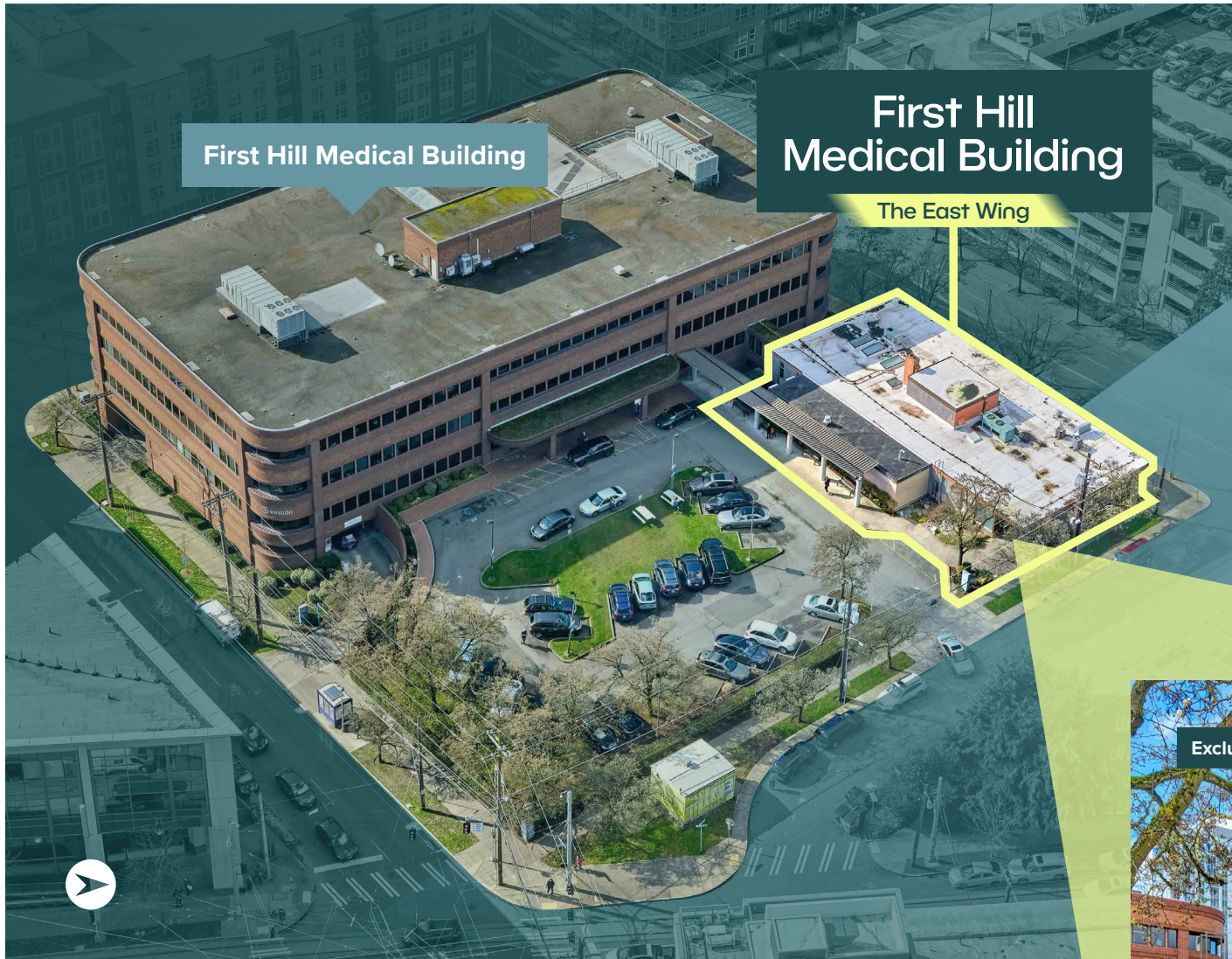


First Hill Medical Building

The East Wing





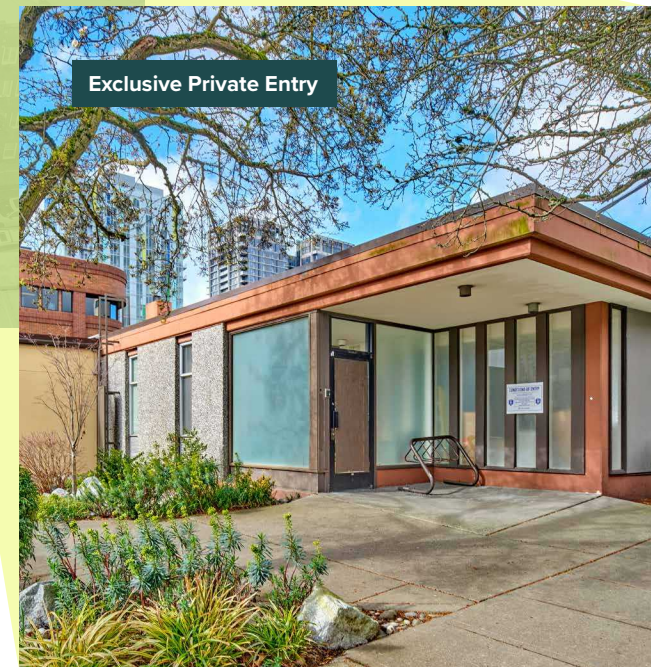
First Hill Medical Building

First Hill Medical Building

The East Wing

First Hill Medical Highlights:

- Medical campus neighbors
- High exposure and market visibility
- Convenient access to I-5 / I-90
- Patient drop-off
- 3.0/1,000 including surface parking
- Immediate access to multiple bus lines and the First Hill street car, with connections to light rail



Exclusive Private Entry

Join the First Hill medical community with cost-effective rates at The East Wing at First Hill Medical Building, neighboring Swedish Hospital and Harborview Medical Center!

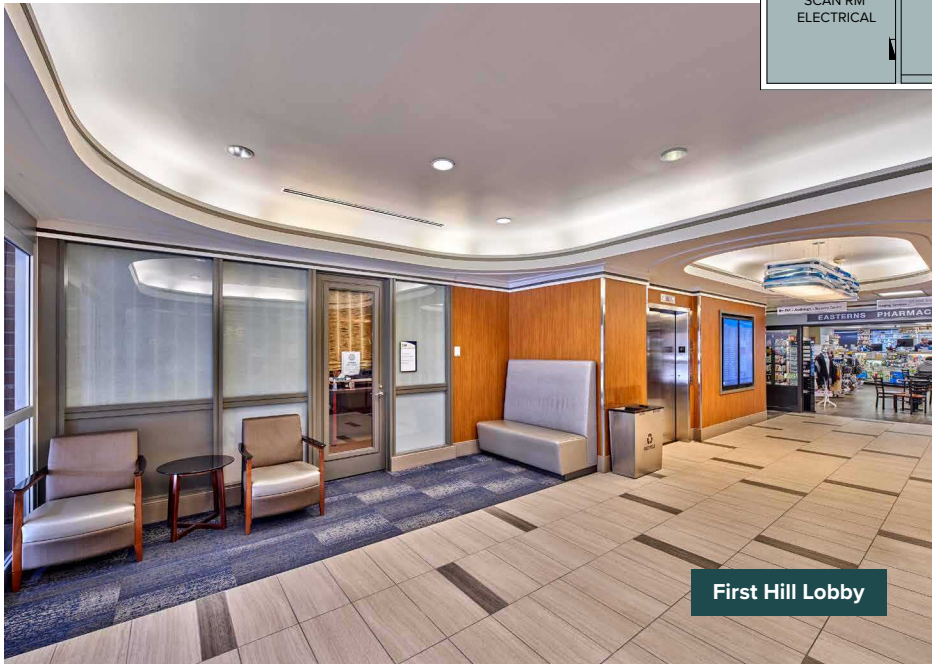
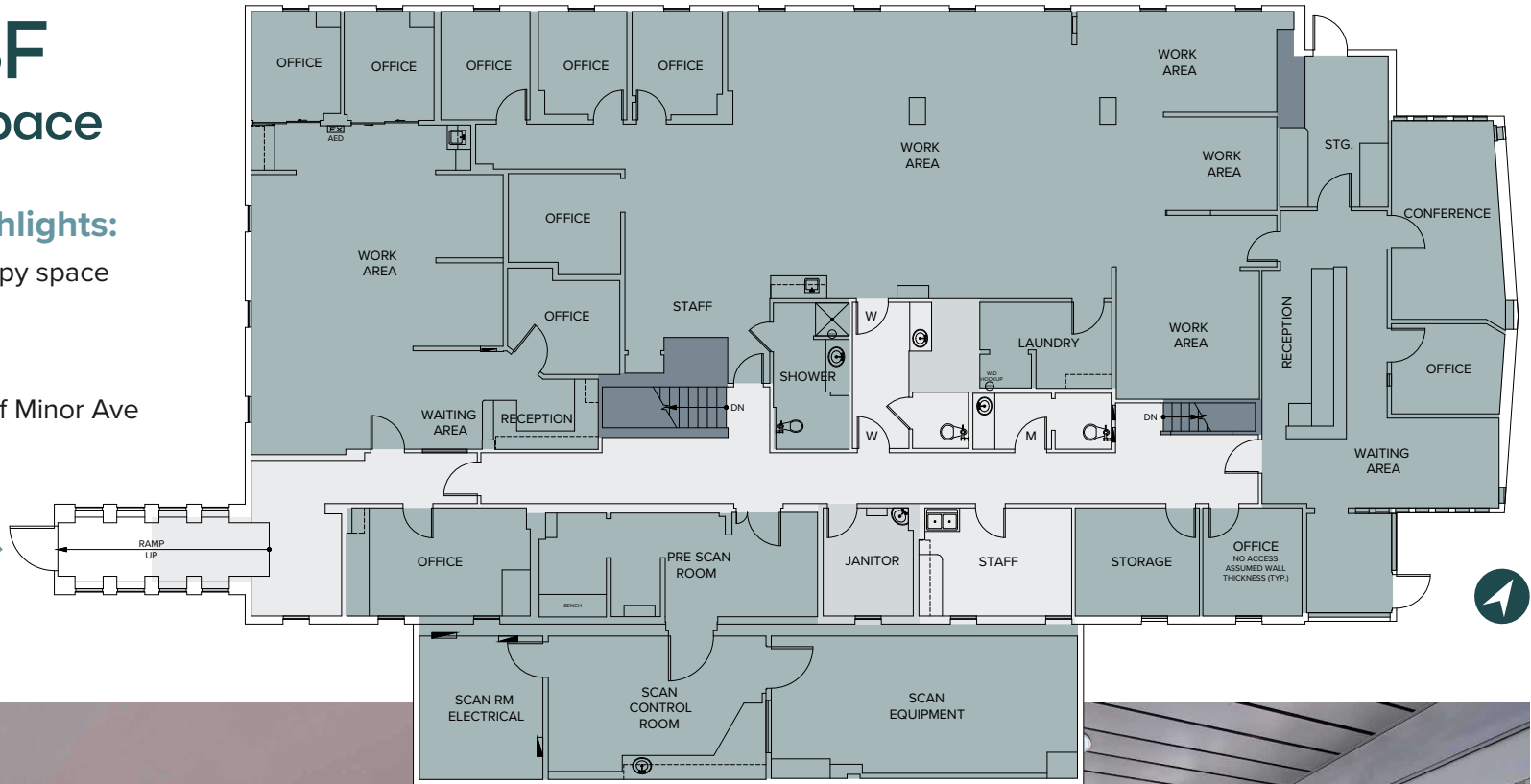
6,847 RSF

East Wing Space

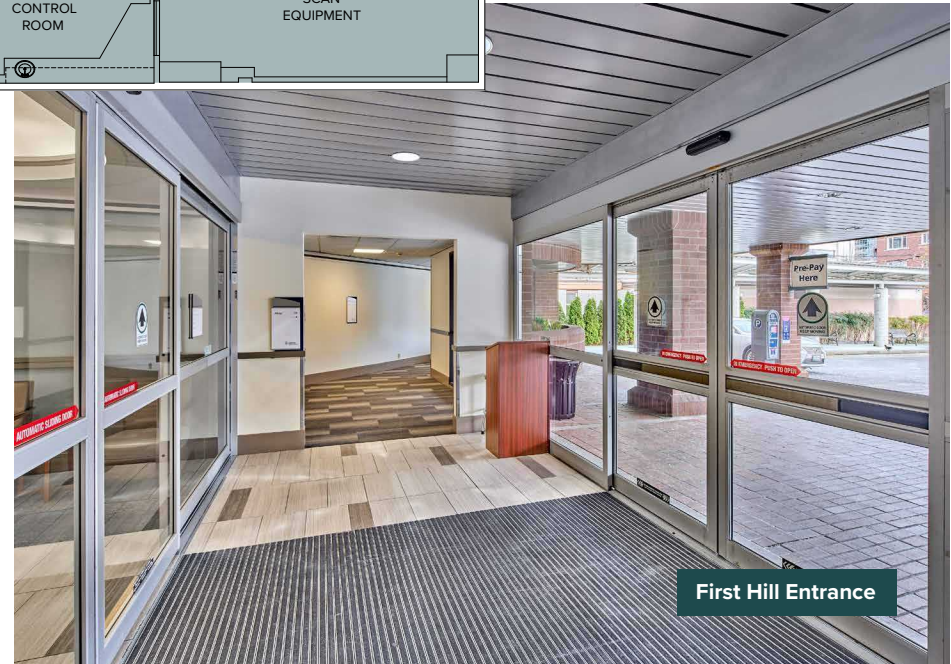
The East Wing Highlights:

- Built-out physical therapy space
- No use restrictions
- Grade-level
- Exclusive suite entry off Minor Ave

Direct Entry to
Main Building



First Hill Lobby



First Hill Entrance



HARBORVIEW
MEDICAL CENTER

First Hill Medical Building

The East Wing



Paul Carr
Senior Vice President
+1 206 292 6005
paul.carr@cbre.com

Katie Smith
Senior Associate
+1 206 292 6012
katie.m.smith@cbre.com

