



26511 79th AVES

Kent, WA

21,591 SF

Space for Sublease

Building Specifications

21,591 SF Available

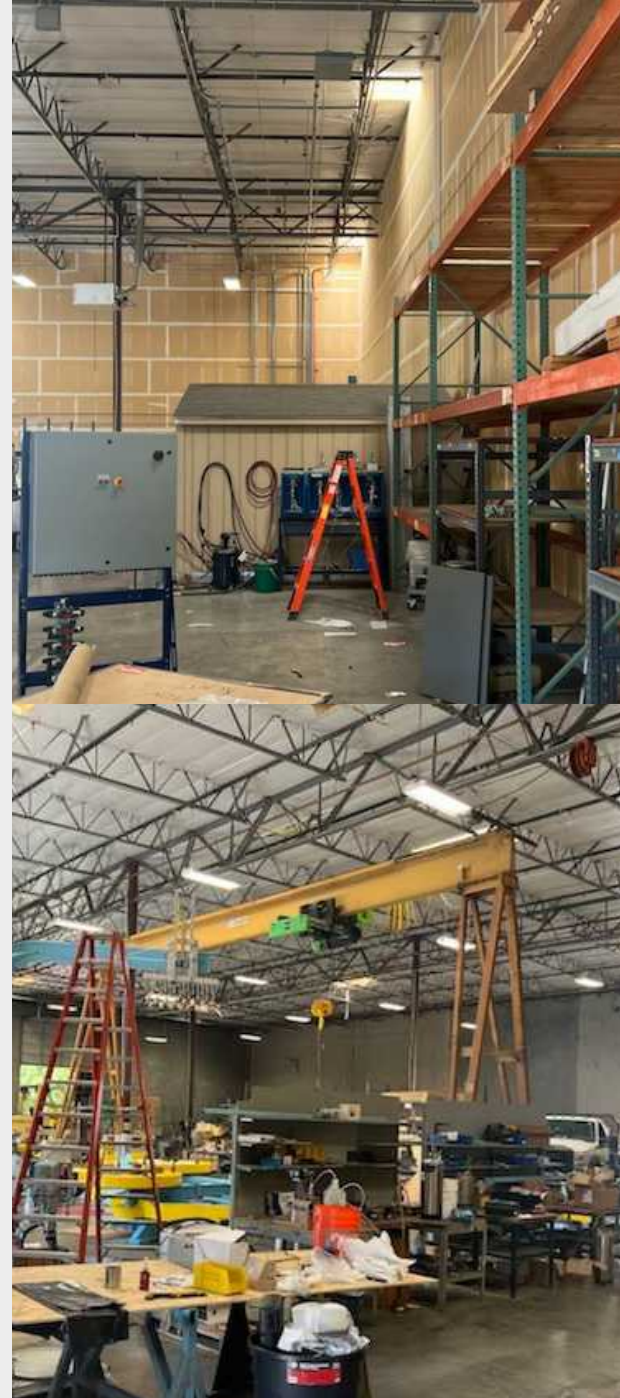
3,720 SF Office

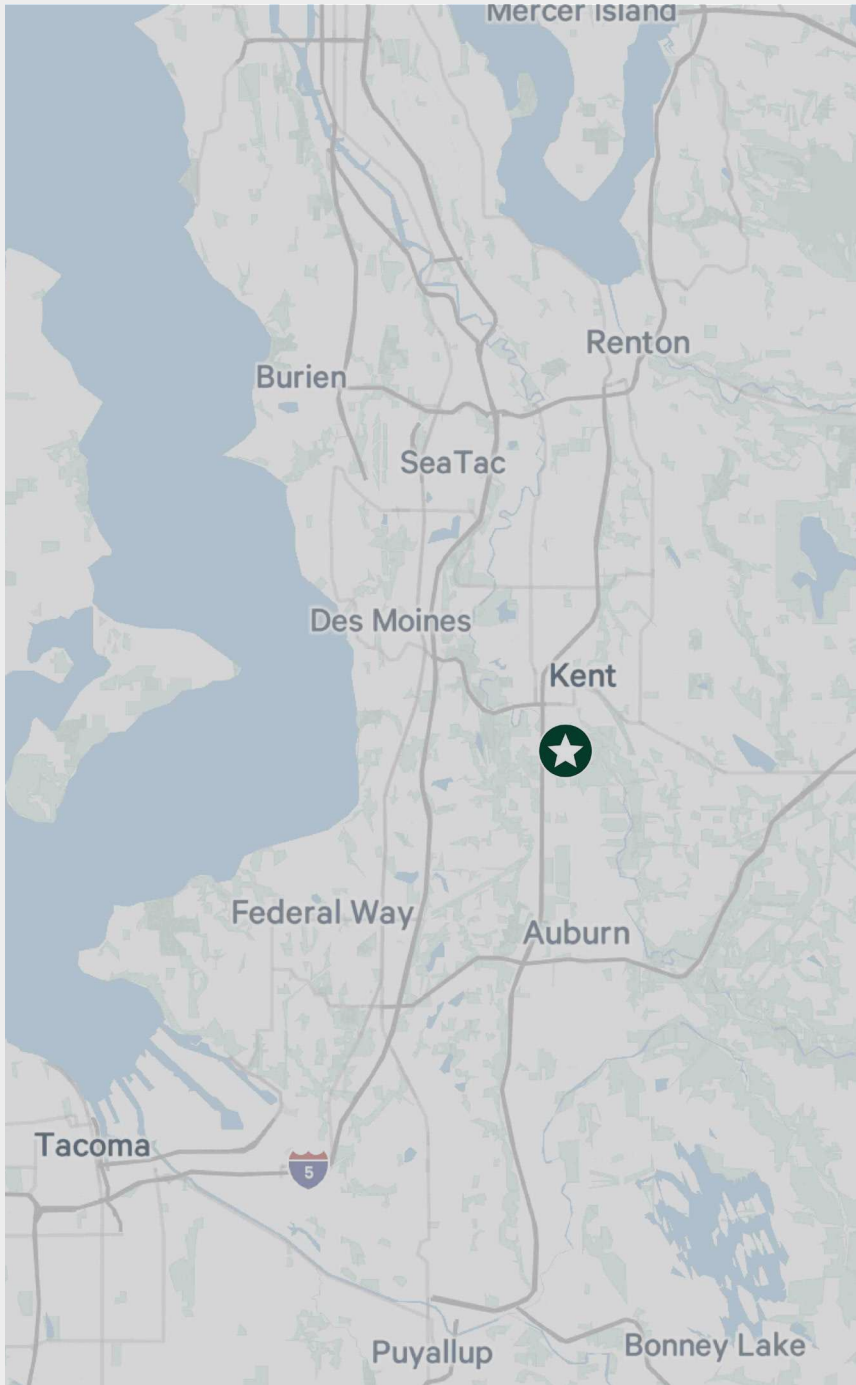
6 Dock High Doors

2 Grade Level Doors

Available with 30-60 Days Notice

Master Lease Expires 10/31/28





26511 79th AVE S

Kent, WA

21,591 SF

Space for Sublease

Shawn Childs, CCIM

First Vice President
+1 206 399 9582
shawn.childs@cbre.com

Ryan Brunette

Associate
+1 206 794 9199
ryan.brunette@cbre.com



© 2024 CBRE, Inc. All rights reserved. This information has been obtained from sources believed reliable but has not been verified for accuracy or completeness. CBRE, Inc. makes no guarantee, representation or warranty and accepts no responsibility or liability as to the accuracy, completeness, or reliability of the information contained herein. You should conduct a careful, independent investigation of the property and verify all information. Any reliance on this information is solely at your own risk. CBRE and the CBRE logo are service marks of CBRE, Inc. All other marks displayed on this document are the property of their respective owners, and the use of such marks does not imply any affiliation with or endorsement of CBRE. Photos herein are the property of their respective owners. Use of these images without the express written consent of the owner is prohibited.