

FOR LEASE

WOODVIEW PLAZA

*594 SF - 1,457 SF Office Spaces
Available in Woodinville*

18915 142ND AVE NE | WOODINVILLE, WA



WOODVIEW PLAZA



Close proximity to downtown Woodinville and easy access to SR-522, Woodview Plaza is known for its outstanding local ownership.

PROPERTY OVERVIEW

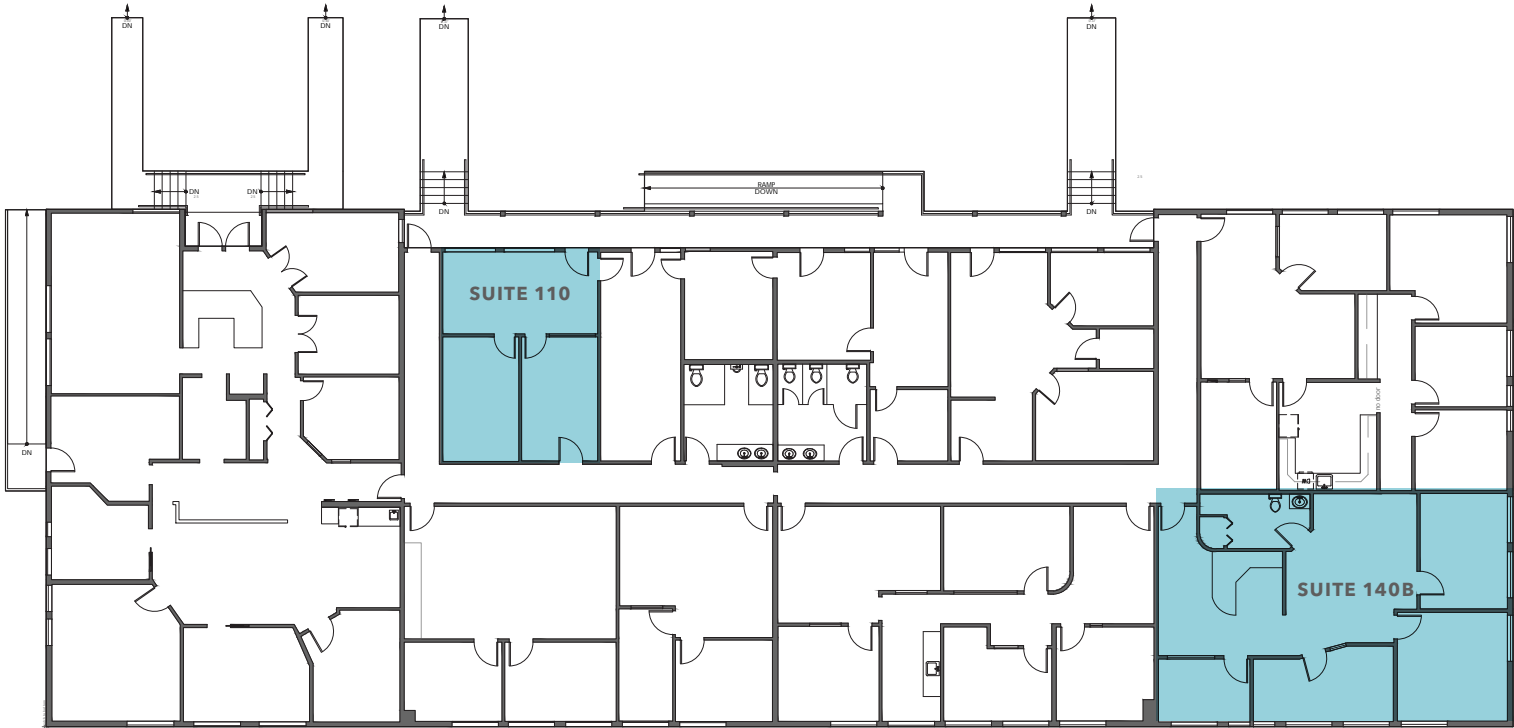
| | |
|---------------|---------------------------------------------|
| ADDRESS | 18915 142nd Ave NE Woodinville, WA 98072 |
| LEASE RATE | \$1.70/SF, NNN |
| NNN'S | \$0.69/SF |
| YEAR BUILT | 1990 |
| CONSTRUCTION | Reinforced Concrete |
| PARKING RATIO | 2.70/1,000 SF |

4 MIN

SR-522 AND I-405
INTERCHANGE

1 MILE

DOWNTOWN
WOODINVILLE



FIRST FLOOR PLAN

| Suite | Lease Rate/Month | Size | NNN/Month | Available |
|------------|------------------|----------|-----------|------------|
| Suite 110 | \$1.70/SF, NNN | 594 SF | \$0.69/SF | 11/01/2024 |
| Suite 140B | \$1.70/SF, NNN | 1,457 SF | \$0.69/SF | Now |



WOODVIEW PLAZA

Exclusively leased by

TODD GAUTHIER

Executive Vice President

425.450.1118

todd.gauthier@kidder.com

JASON BLOOM

Executive Vice President

425.450.1102

jason.bloom@kidder.com

JACK ALBRECHT

Associate Vice President

425.450.1114

jack.albrecht@kidder.com

KIDDER.COM

This information supplied herein is from sources we deem reliable. It is provided without any representation, warranty, or guarantee, expressed or implied as to its accuracy. Prospective Buyer or Tenant should conduct an independent investigation and verification of all matters deemed to be material, including, but not limited to, statements of income and expenses. Consult your attorney, accountant, or other professional advisor.

