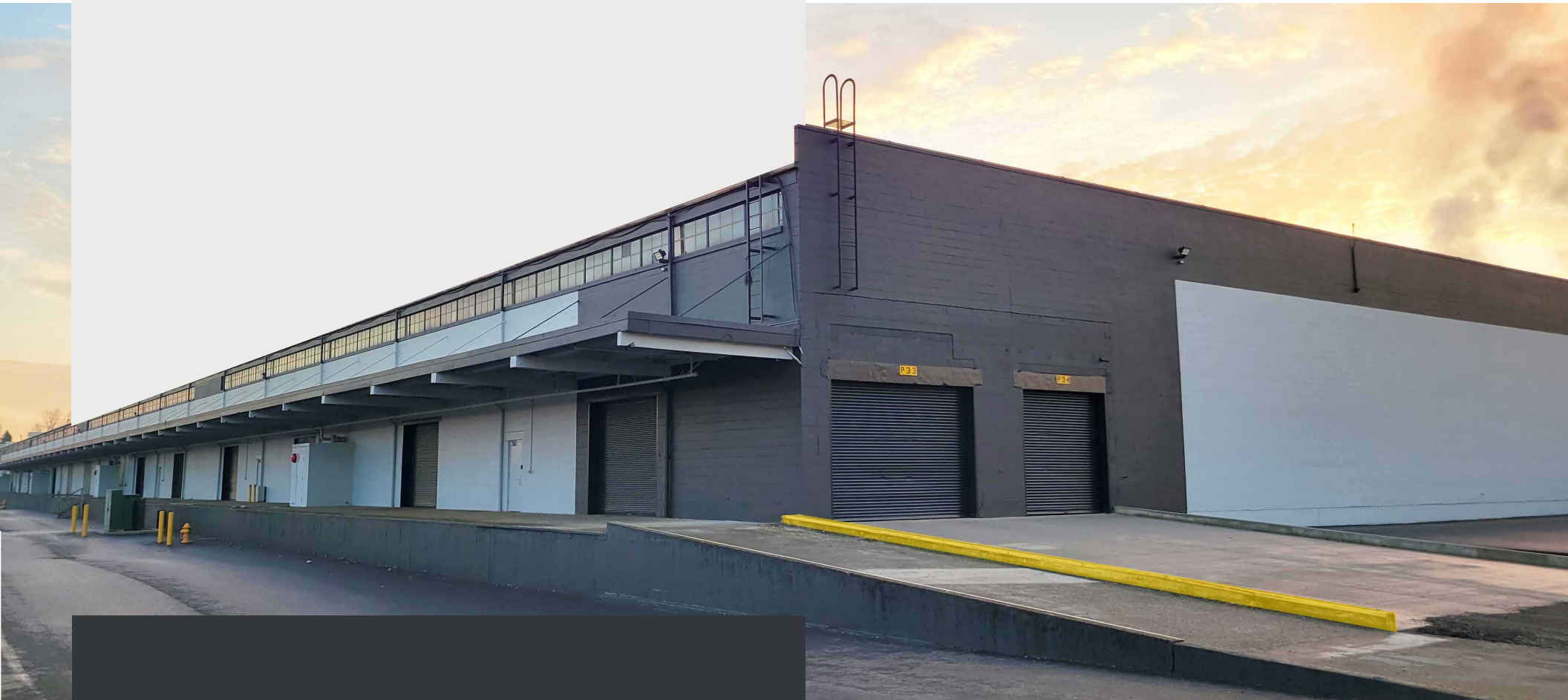


# AUBURN 18 BUSINESS PARK

---

2701-2703 C ST SW | AUBURN, WA 98001

2 BUILDINGS AVAILABLE  
manufacturing | assembly | processing  
warehouse | distribution



BUILDING ONE 170,258 TOTAL SF  
BUILDING TWO 173,052 TOTAL SF

**CBRE**

# PROPERTY INFORMATION

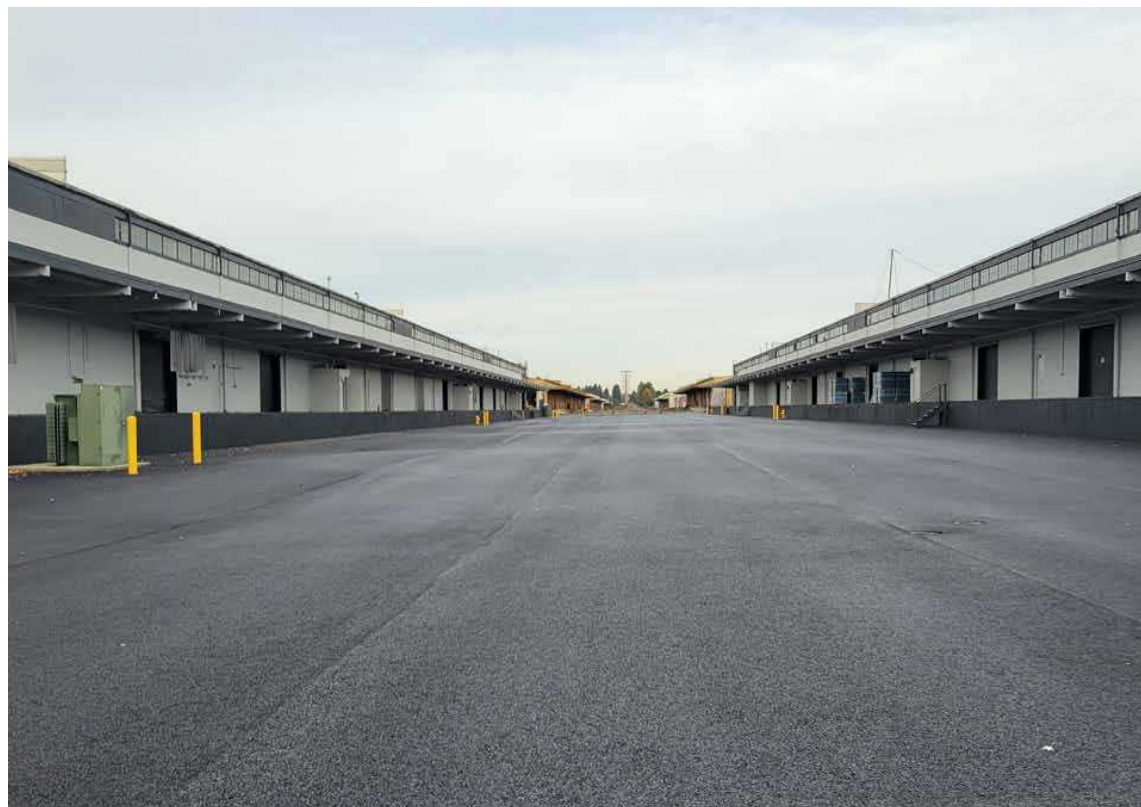
## BUILDING ONE 2701 C ST SW

- 170,258 total SF
- Divisible to 43,264 SF
- 1,521 SF of existing office
- Heavy 3-phase, 480V power
- ±22' - 24' clear height
- ±67' x 33' column spacing
- Potential adjacent yard available
- Dock-high and ramped grade-level loading

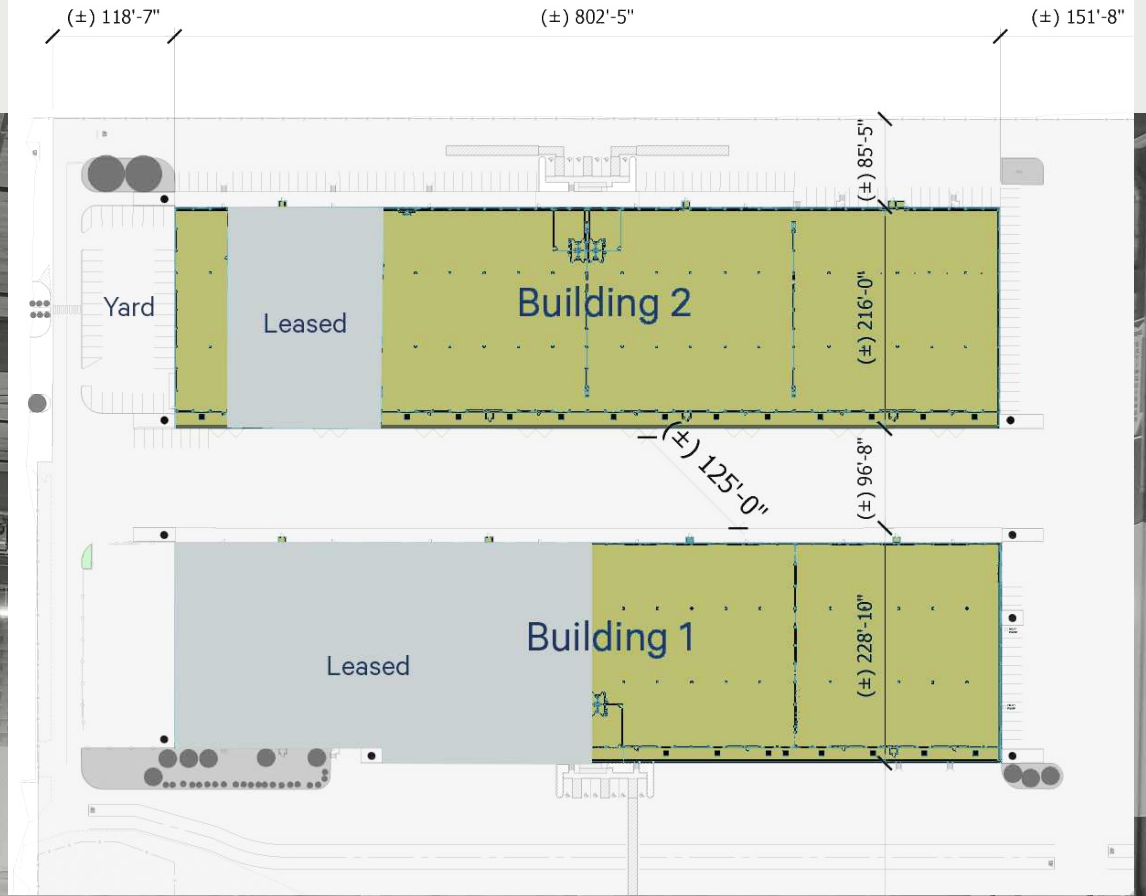


## BUILDING TWO 2703 C ST SW

- 173,052 total SF
- Divisible from 11,924 SF to 43,137 SF
- Office areas of 1,508 SF and 1,540 SF that can be combined
- Heavy 3-phase, 480V power
- ±22' - 24' clear height
- ±67' x 33' column spacing
- Potential adjacent yard available
- Dock-high and ramped grade-level loading



# SITE PLAN



	<b>BUILDING 1</b>	<b>BUILDING 2</b>
<b>Address</b>	2701 C St SW	2703 C St SW
<b>Available SF</b>	86,564 SF	129,915 SF
<b>Clear Height</b>	±22' - 24'	±22' - 24'

# AUBURN 18 BUSINESS PARK

2701-2703 C ST SW | AUBURN, WA 98001

## MONTE DECKER

Senior Vice President

+1 253 596 0041

monte.decker@cbre.com

## CHRIS COWLES

First Vice President

+1 253 596 0048

chris.cowles@cbre.com



© 2024 CBRE, Inc. All rights reserved. This information has been obtained from sources believed reliable but has not been verified for accuracy or completeness. CBRE, Inc. makes no guarantee, representation or warranty and accepts no responsibility or liability as to the accuracy, completeness, or reliability of the information contained herein. You should conduct a careful, independent investigation of the property and verify all information. Any reliance on this information is solely at your own risk. CBRE and the CBRE logo are service marks of CBRE, Inc. All other marks displayed on this document are the property of their respective owners, and the use of such marks does not imply any affiliation with or endorsement of CBRE. Photos herein are the property of their respective owners. Use of these images without the express written consent of the owner is prohibited. PM Studio\_8.24

