

Building 4412

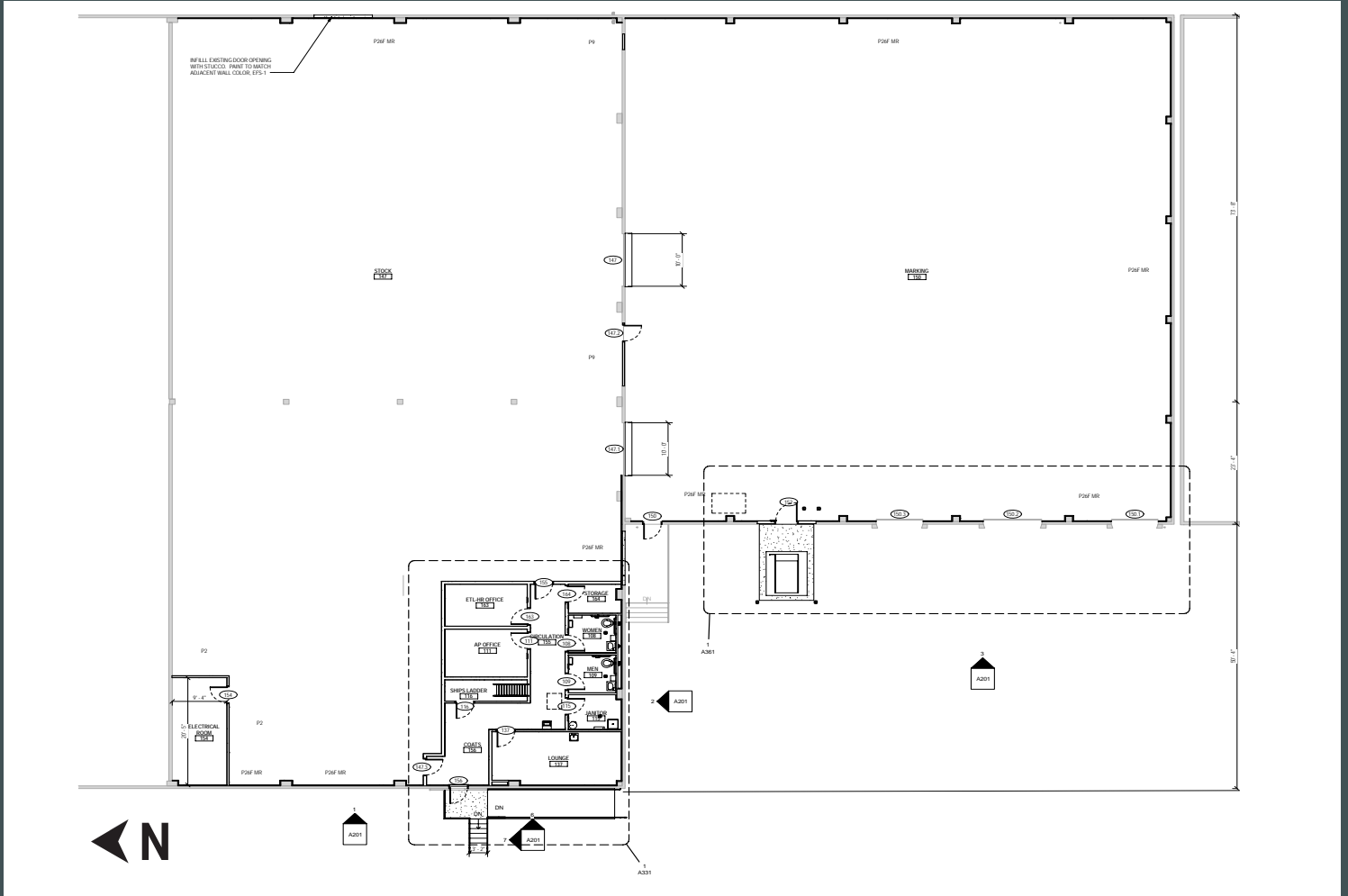
4412 4th Avenue South
Seattle, WA 98134

Sodo/Georgetown Area



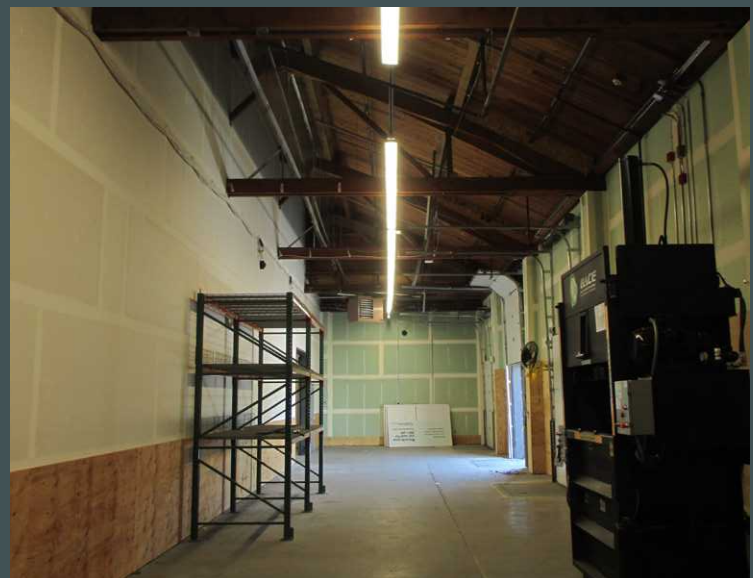
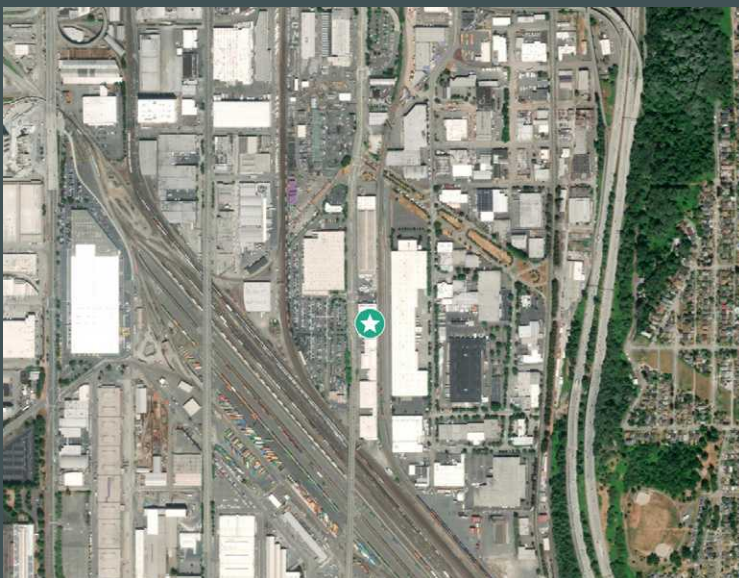
Building 4412

4412 4th Avenue South | Seattle, WA 98134



Features

- + Fully Air Conditioned Space
- + Square Footage: Total 20,794 (1,900 SF Office)
- + 3 Dock High Doors with Levelors
- + Asking Rate: \$1.20 PSF NNN
- + Estimated NNN's: \$0.38 PSF/Mo, \$4.56 PSF/Yr
- + Master Lease Expires: 06/30/2027



Contact Us

Dan Stutz

Senior Vice President

T +1 206 292 6097

C +1 206 228 8855

dan.stutz@cbre.com

Bryan Hester

Vice President

T +1 206 292 6079

C +1 206 459 8567

bryan.hester@cbre.com

© 2021 CBRE, Inc. All rights reserved. This information has been obtained from sources believed reliable, but has not been verified for accuracy or completeness. You should conduct a careful, independent investigation of the property and verify all information. Any reliance on this information is solely at your own risk. CBRE and the CBRE logo are service marks of CBRE, Inc. All other marks displayed on this document are the property of their respective owners, and the use of such logos does not imply any affiliation with or endorsement of CBRE. Photos herein are the property of their respective owners. Use of these images without the express written consent of the owner is prohibited. 4-3-24 AS