

33,600 SF

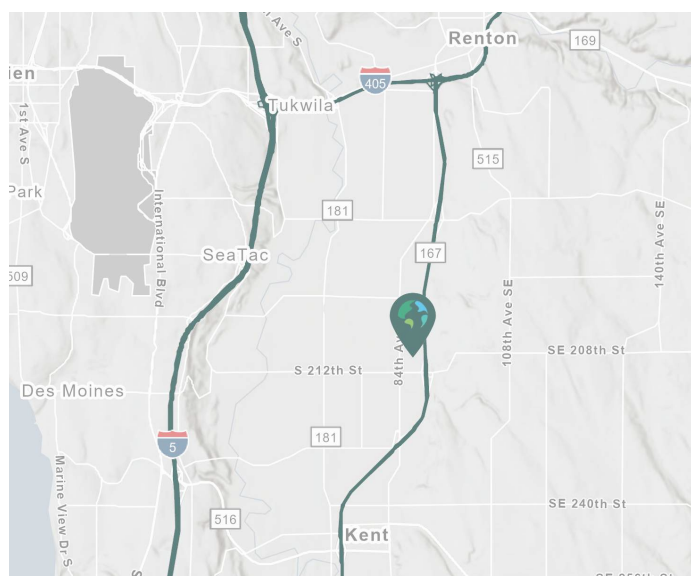
Industrial Space For Lease



Northwest Corporate Park - Kent 17



20866 84th Ave S
Kent, WA 98031



LOCATION

- 50-yard line location
- Great access to Hwy 167, I-5, and I-405

FACILITY

- 33,600 SF shell
- 2,830 SF 1st floor office
- 2,384 SF 2nd floor office
- ±12,000 SF fenced outside storage
- 14 DH doors
- 1 GL door
- 22' clear height
- 40' x 40' typical column spacing
- Available now
- Fast, cost-effective forklift and racking sourcing through Prologis Essentials

Your single-source service for efficient move-in and operations: [prologisessentials.com](https://www.prologisessentials.com)

www.prologis.com

33,600 SF

Industrial Space For Lease



Northwest Corporate Park - Kent 17

NOTE: THIS CONCEPTUAL PLAN IS FOR MARKETING PURPOSES ONLY AND HAS BEEN PREPARED BASED ON PRELIMINARY AVAILABLE SITE INFORMATION DEEMED RELIABLE. ALL DIMENSION AREA CALCULATIONS ARE SUBJECT TO VERIFICATION BY A PROFESSIONAL ENGINEER FOR COMPLIANCE WITH ALL FEDERAL, STATE, AND LOCAL REGULATIONS.

PROLOGIS
NW CORPORATE PARK
KENT 17
(sea04017)

20866 89TH AVENUE S.
KENT, WA 98031

TOTAL BUILDING FOOTPRINT:	33,600 SF
TOTAL AVAILABLE:	33,600 SF
OFFICE SPACE:	2,877 SF
2ND FLOOR OFFICE:	1,921 SF
STORAGE MEZZANINE:	373 SF
WAREHOUSE SPACE:	30,723 SF

AUTO PARKING:	41
DOCK DOORS:	14
RAIL DOORS:	0
DRIVE-INS DOORS:	1
TYPICAL SPEED BAY DEPTH:	±40'-1"
TYPICAL COLUMN SPACING:	±40'-0" X 40'-0"

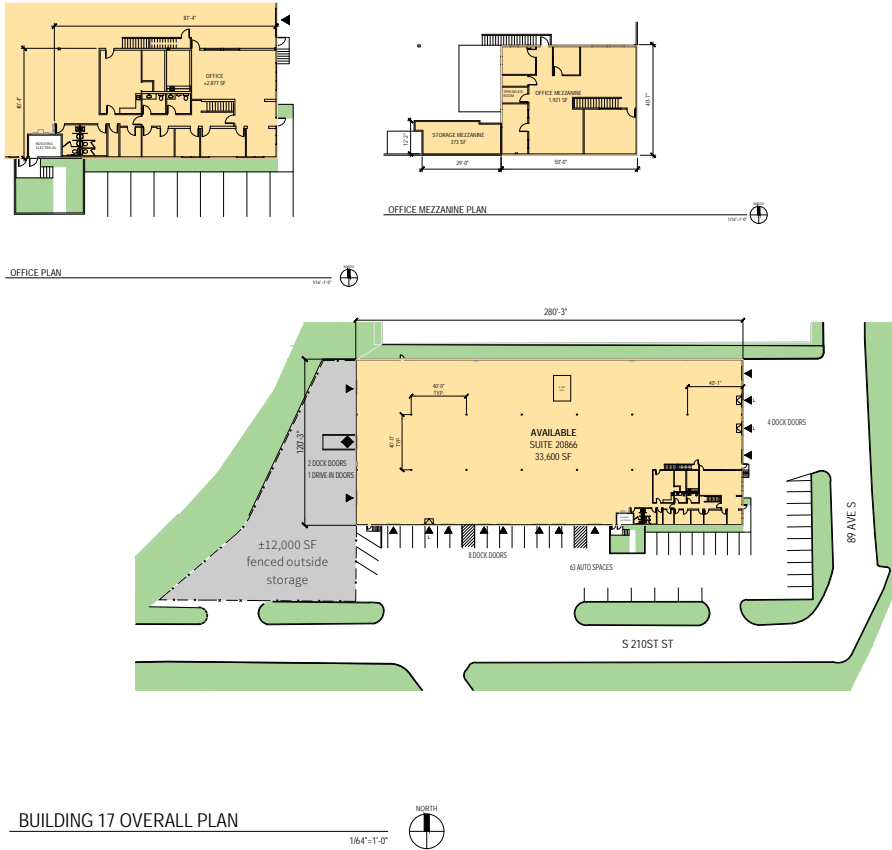
LEGEND:

- ▼ DOCK DOOR
L = LEVELER
- ◆ DRIVE-IN DOOR
- RAIL DOOR
- AVAILABLE AREA
- LEASED AREA
- LAND



B **BURGESS DESIGN**

DATE: MAY, 13, 2024



KBC Advisors

Matt Wood, SIOR
 matt.wood@kbcadvisors.com
 ph +1 206 741 1030
 cell +1 206 595 6814
 5628 Airport Way S
 Suite 238
 Seattle, WA 98108 USA

KBC Advisors

Hans Vieser
 hans.vieser@kbcadvisors.com
 ph +1 206 741 1030
 cell +1 425 765 7926
 5628 Airport Way S
 Suite 238
 Seattle, WA 98108 USA

Prologis

Kimberley Nemethy
 knemethy@prologis.com
 ph +1 206 414 7616
 cell +1 253 508 1737
 5900 Airport Way South
 Suite 300
 Seattle, WA 98108 USA