

KIRKLAND

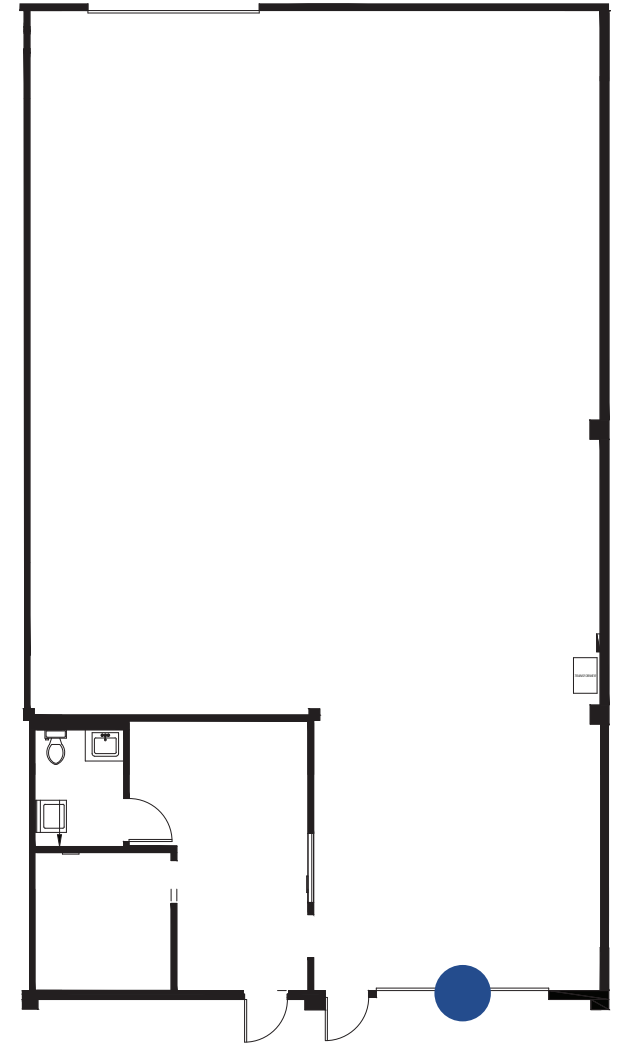
BUSINESS CENTER

11854 NE 112th Street, Kirkland, WA

- Approx. 2,800 SF (250 SF Office)
- One 10'x14' Grade Level Door
- 16' Clear Height
- Available with 30 days' notice
- Asking Rate: \$1.80/SF, NNN
- Estimated OpEx: \$0.40/SF
- 1-Year Sublease Term



SUBLEASE



 = GRADE LEVEL

BRODERICK
• GROUP •

JEFF LIVINGSTON
425.274.4288

livingston@broderickgroup.com

RAWLEY HOLMBERG
425.274.4284

holmberg@broderickgroup.com

CONNOR GILCHRIST
425.274.4286

gilchrist@broderickgroup.com

The information contained herein has been given to us by the owner or sources that we deem reliable. We have no reason to doubt its accuracy, but we do not guarantee it. Prospective tenants should carefully verify all information contained herein.