

# YESLER TOWERS



Welcome to  
Yesler Terrace

*New Retail & Restaurant  
Lease Opportunities!*

NORTH TOWER

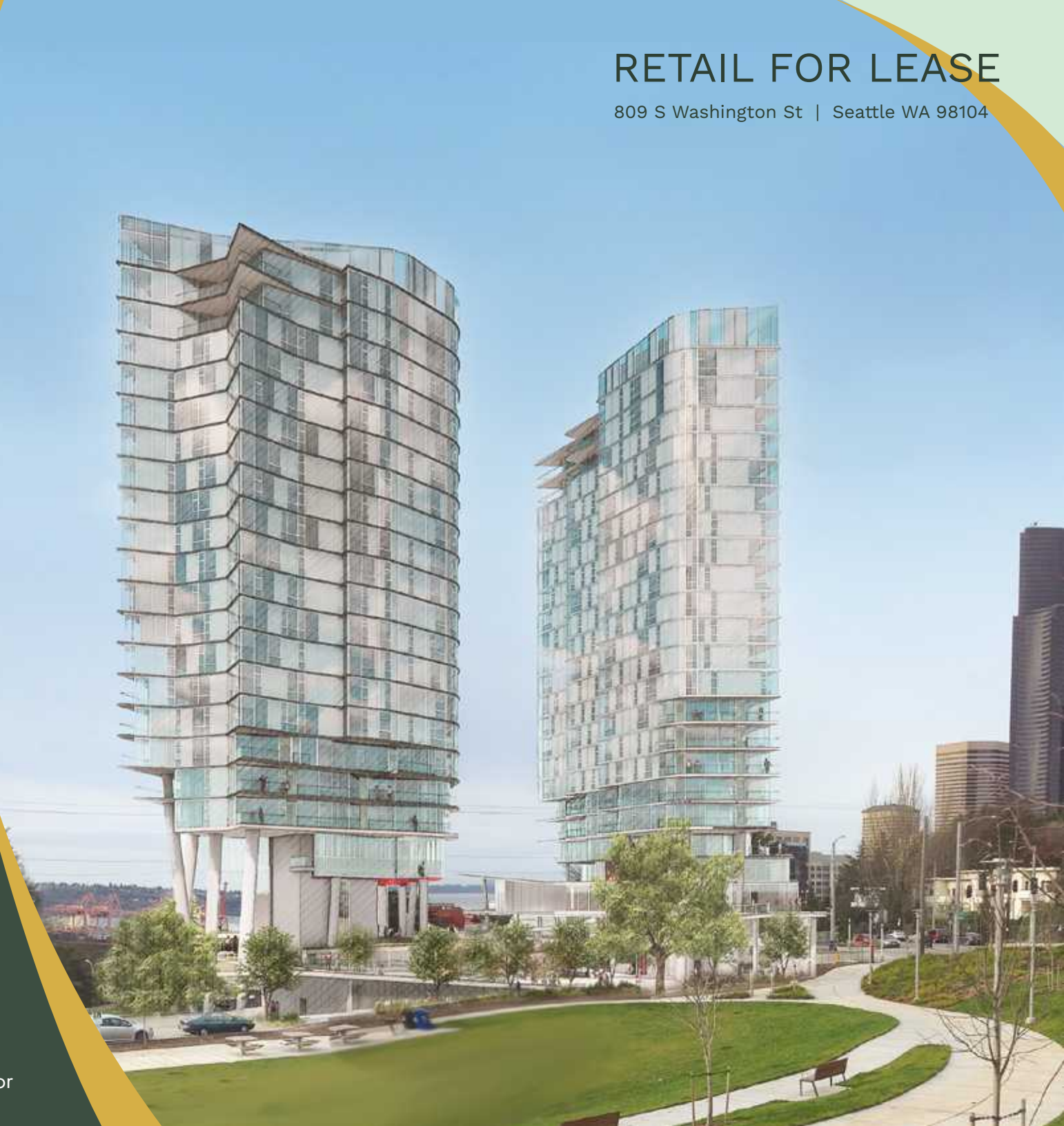
**AVAILABLE  
NOW**



Kara Farley | Blake Taylor

# RETAIL FOR LEASE

809 S Washington St | Seattle WA 98104





# YESLER TOWERS

At Yesler Towers, we proudly stand as more than just a high-rise community; we are a living testament to the ever-evolving spirit of Seattle's iconic Yesler Terrace neighborhood. Our brand ethos is built on honoring the rich past that shapes our surroundings while propelling us into a future of boundless possibilities. Nestled in the heart of this vibrant neighborhood, we are committed to being a beacon of creativity and a hub of innovation.

**Restaurant & Retail Spaces Available:  
Embrace New Heights at  
Yesler Towers!**

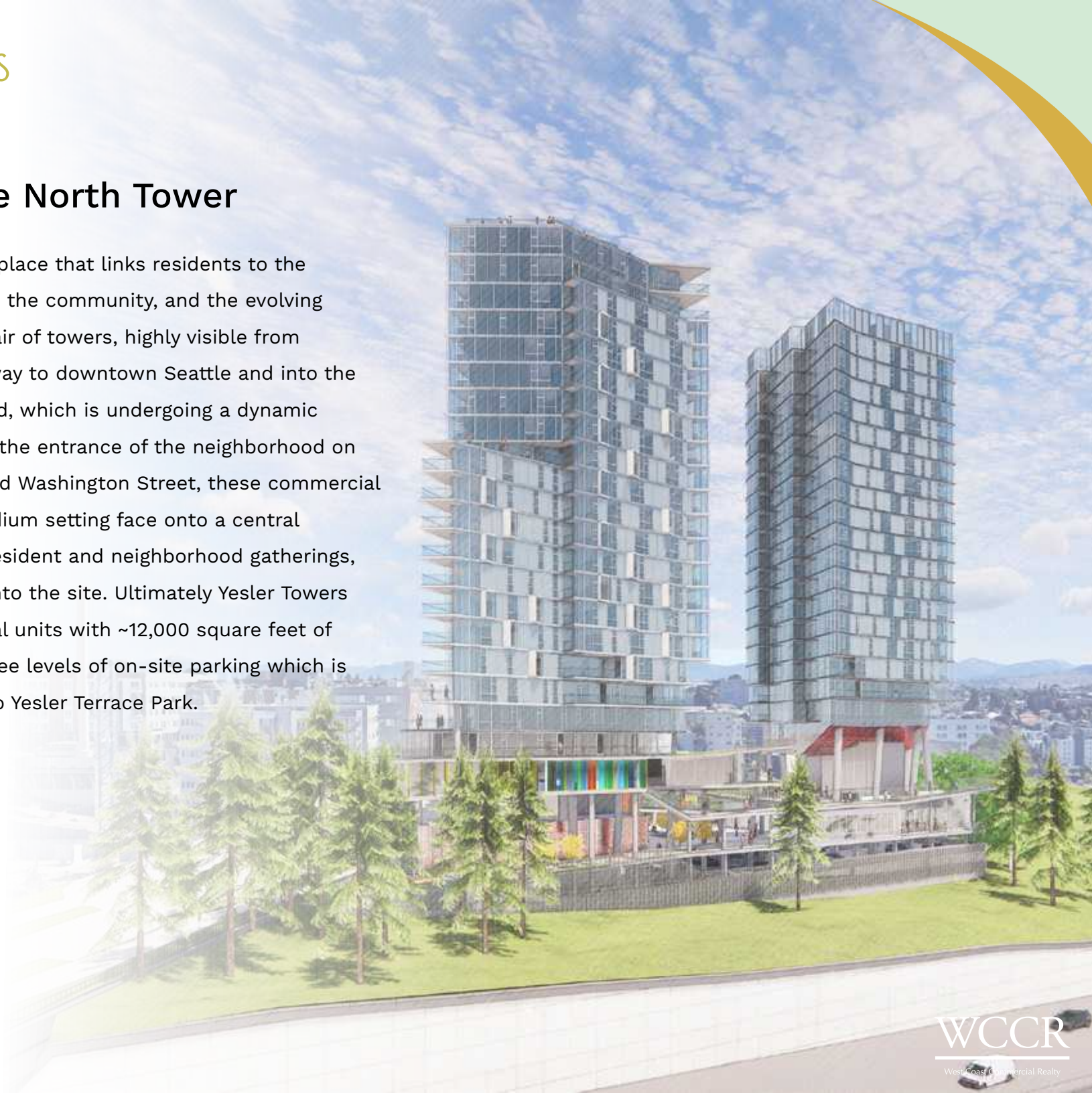




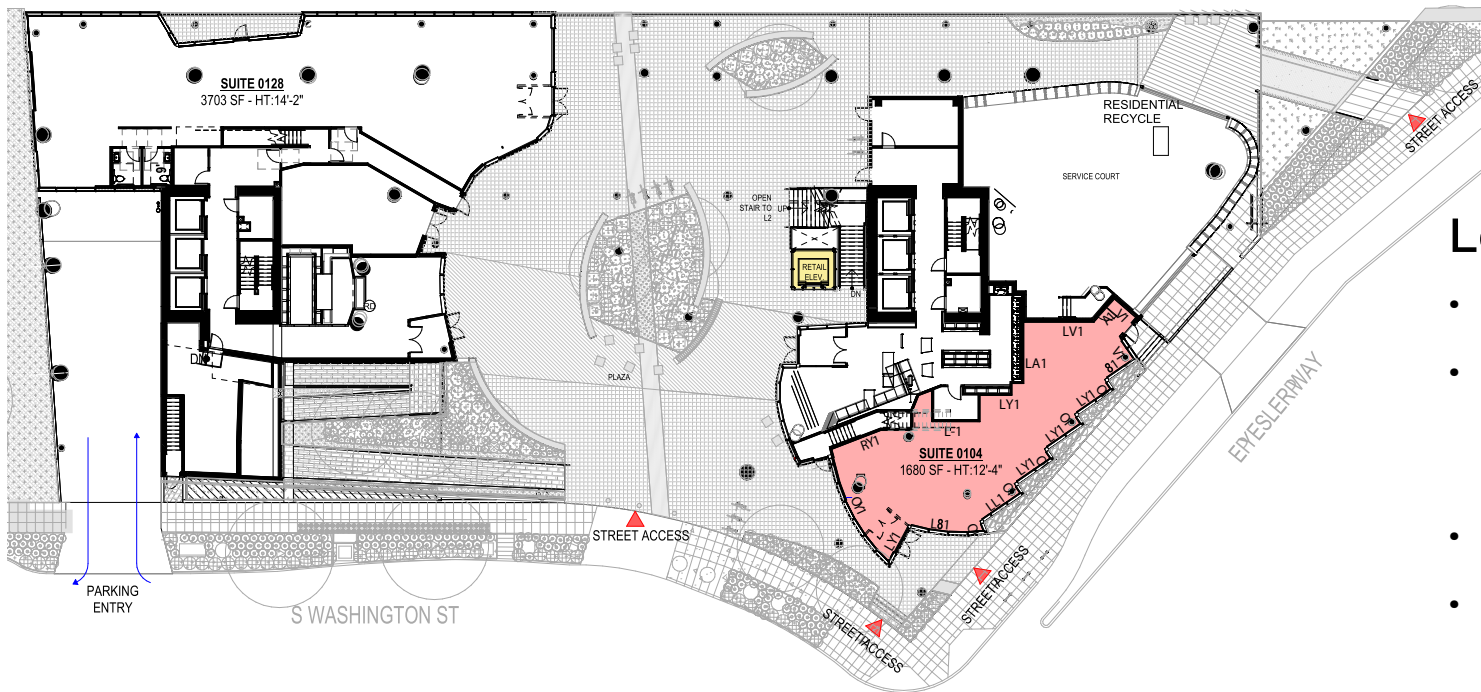
# YESLER TOWERS

## Introducing The North Tower

Yesler Towers will create a place that links residents to the neighborhood, neighbors to the community, and the evolving community to the city. A pair of towers, highly visible from Interstate 5, create a gateway to downtown Seattle and into the Yesler Terrace neighborhood, which is undergoing a dynamic redevelopment. Nestled at the entrance of the neighborhood on the corner of Yesler Way and Washington Street, these commercial spaces in a multi-story podium setting face onto a central public plaza available for resident and neighborhood gatherings, extending park activities onto the site. Ultimately Yesler Towers will provide 350+ residential units with ~12,000 square feet of retail opportunities and three levels of on-site parking which is directly across the street to Yesler Terrace Park.



# YESLER TOWERS



## Level 1:

- Size: 1,680 square feet
- Features: Type 1 hood capable, 12'4" clear height, floor to ceiling windows, outdoor seating
- Yesler Way street visibility
- Direct access from courtyard promenade
- Ideal for: Restaurant/Bar, Light Food, Service, General Retail

Step into a commercial space that pays homage to the neighborhood's history while offering a cutting-edge platform for your restaurant or bar.

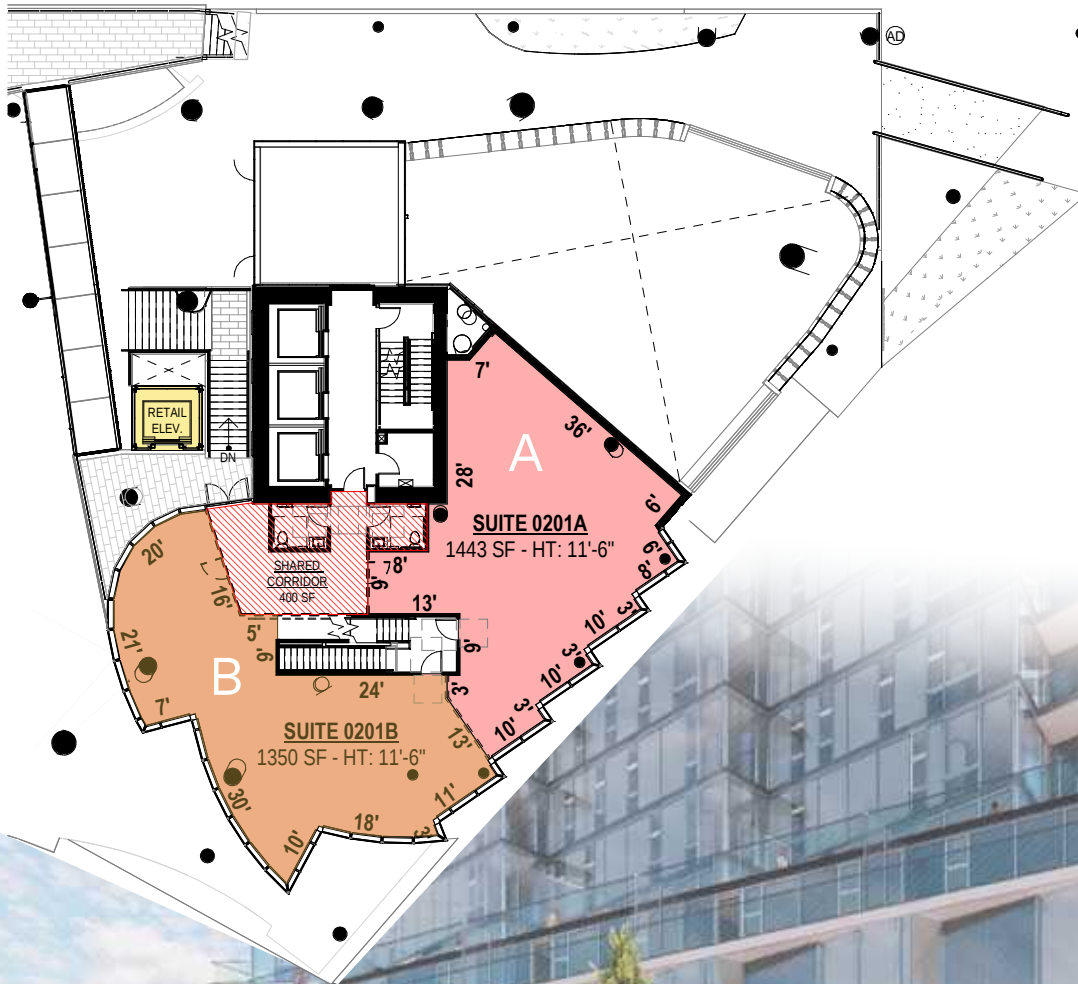
This space seamlessly blends neighborhood charm with modern functionality, creating an environment where your culinary vision can thrive. Be part of a community that values tradition and innovation in equal measure.



Retail Space depicted from Yesler Way



## Level 2:



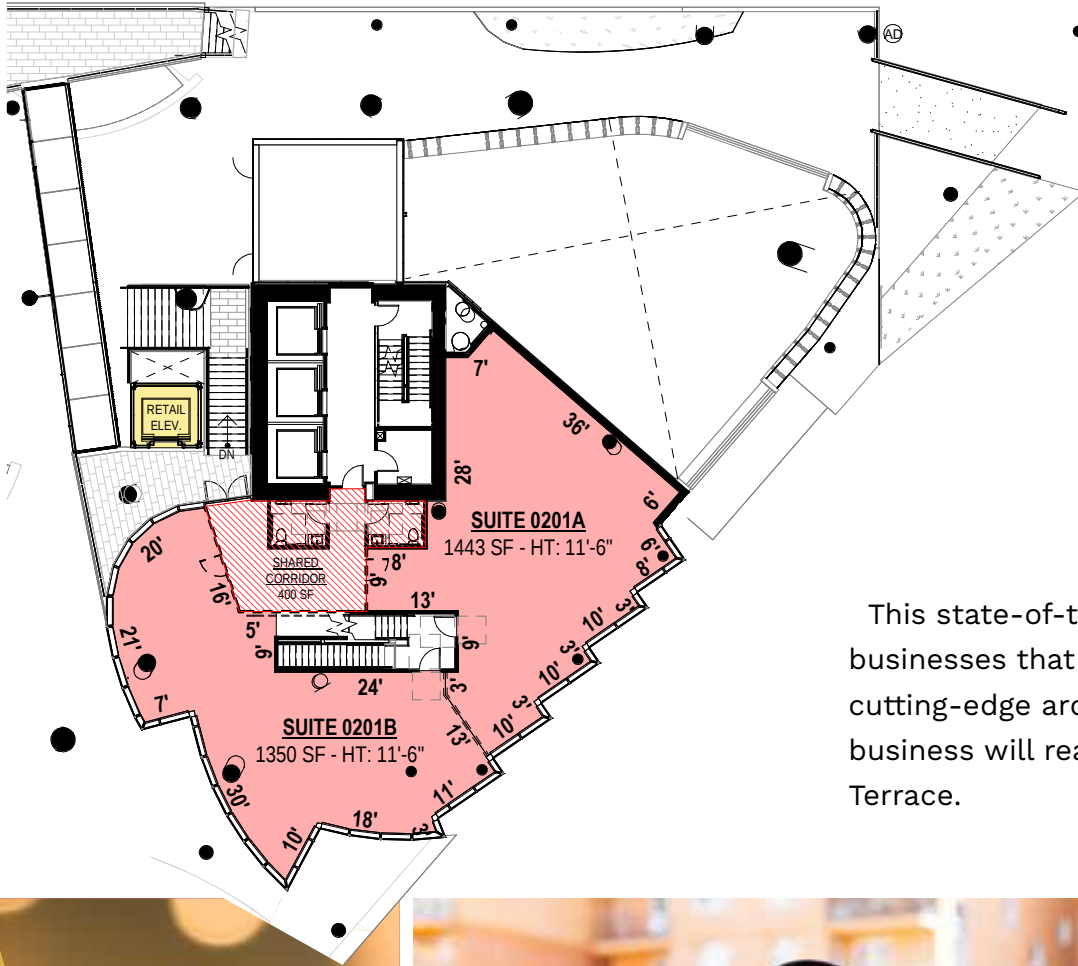
These chic commercial spaces are perfect for businesses that prioritize aesthetics and contemporary style. With floor to ceiling windows and views of the lush surroundings, your brand will be showcased in a space that elevates not only your products but also the shopping experience. Join us at the forefront of design and culture.

Ideal for: Service, Light Food, General Retail, Beverage, Fitness, Specialty

- A** 201A
  - Size: 1,443 square feet
  - Features: 11'6" clear height
- B** 201B
  - Size: 1,350 square feet

YESLER TOWERS

# YESLER TOWERS



## Level 2 - Combined:

- Space Size: Combine 201A and 201B for a larger, collaborative workspace
- Combined Size: 2,793 square feet
- Ideal for: Service, Light Food, General Retail, Beverage, Fitness, Specialty

This state-of-the-art commercial space is designed for forward-thinking businesses that thrive on collaboration and innovation. With flexible layouts, cutting-edge architecture, and a community that values creativity, your business will reach new heights. Join us in shaping the future of Yesler Terrace.







Getting Around in Yesler Terrace



**94**  
Walk Score  
"Walker's Paradise"



**79**  
Bike Score  
"Very Bikeable"



**98**  
Transit Score  
"Rider's Paradise"



# YESLER TOWERS

EMBRACING NEW HEIGHTS

## AREA AMENITIES

### FOOD & DRINK

1. Sushi Kanpai
2. Metropolitan Grill
3. Vito's
4. Cedars
5. Rhein Haus
6. Sugar Bakery & Cafe
7. Yellow Bee Market & Cafe
8. The Hideout
9. COMMUNION
10. 8oz Burger & Co
11. Skillet Diner
12. Tougo Coffee
13. Lark
14. Mad Pizza
15. Bebas & Amigos
16. Pho Bac Sup Shop
17. Hello Em Viet Coffee & Roastery
18. Franz Bakery
19. Jackson's Catfish Corner

### PARKS

1. Seattle University Park
2. Freeway Park
3. Cal Anderson Park
4. City Hall Park
5. Kobe Terrace
6. First Hill Park
7. Westlake Park
8. Yesler Terrace Park
9. Pratt Park
10. Judkins Park
11. Garfield Playfield
12. Powell Barnett Park
13. Lewis Park

### HEALTH & WELLNESS

1. Harborview Medical Center
2. NW Fitness Gym
3. Downtown Seattle YMCA
4. Virginia Mason Hospital
5. Swedish First Hill
6. F45 Training
7. Anytime Fitness

### GROCERY

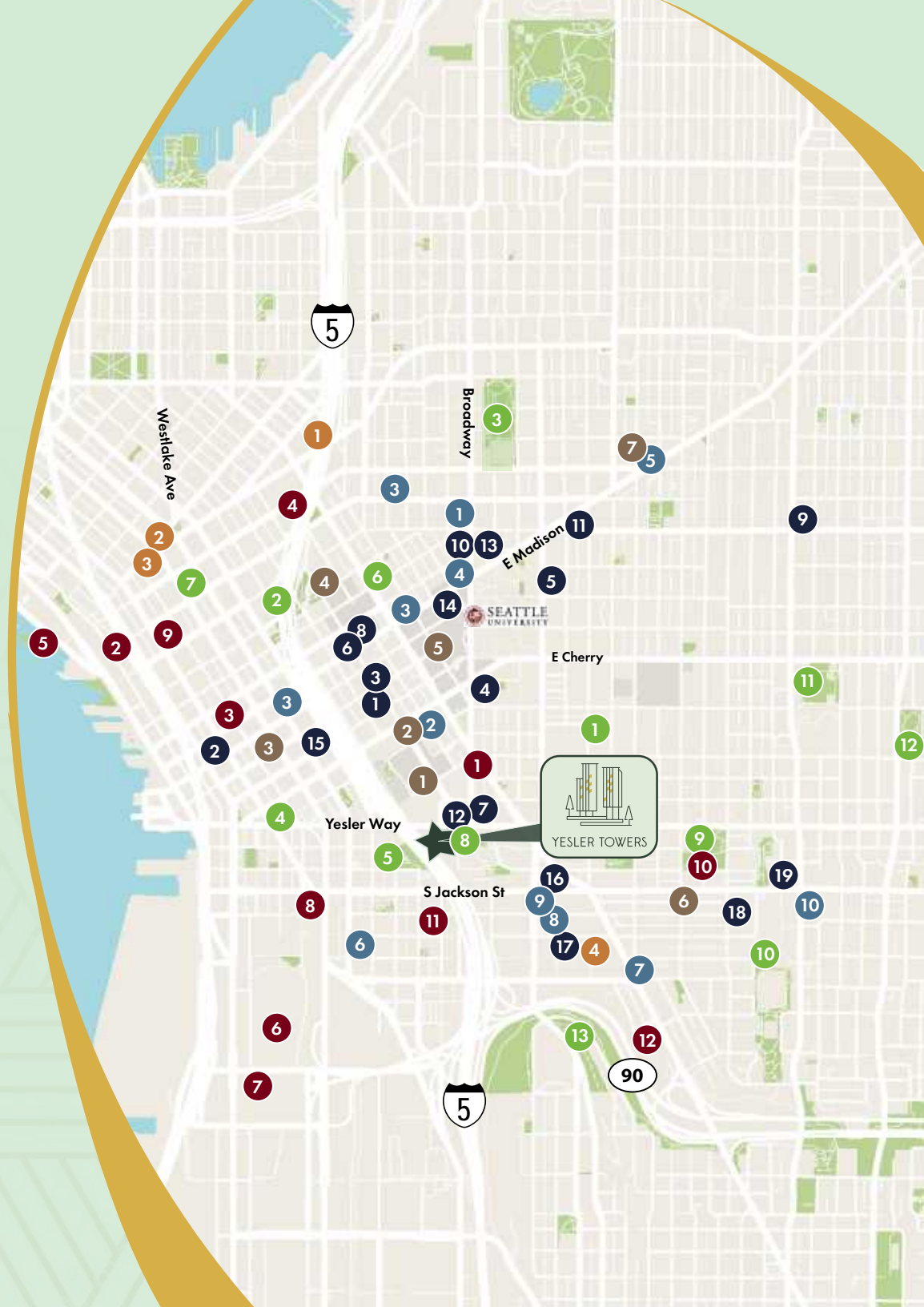
1. Quality Food Center (QFC)
2. Stockbox First Hill Grocery
3. Amazon Go
4. Whole Foods
5. Trader Joe's
6. Uwajimaya
7. Big John's PFI
8. Lam's Seafood Market
9. Hau Hau Market
10. Amazon Fresh

### ACTIVITIES

1. Frye Art Museum
2. Pike Place Market
3. Seattle Public Library
4. Convention Center
5. Seattle Aquarium
6. Century Link Field
7. T-Mobile Park
8. King Street Station
9. Seattle Art Museum
10. Pratt Fine Arts Center
11. Wing Luke Museum
12. Seattle Bouldering Project

### SHOPPING

1. Melrose Market
2. Pacific Place
3. Westlake Center
4. Goodwill



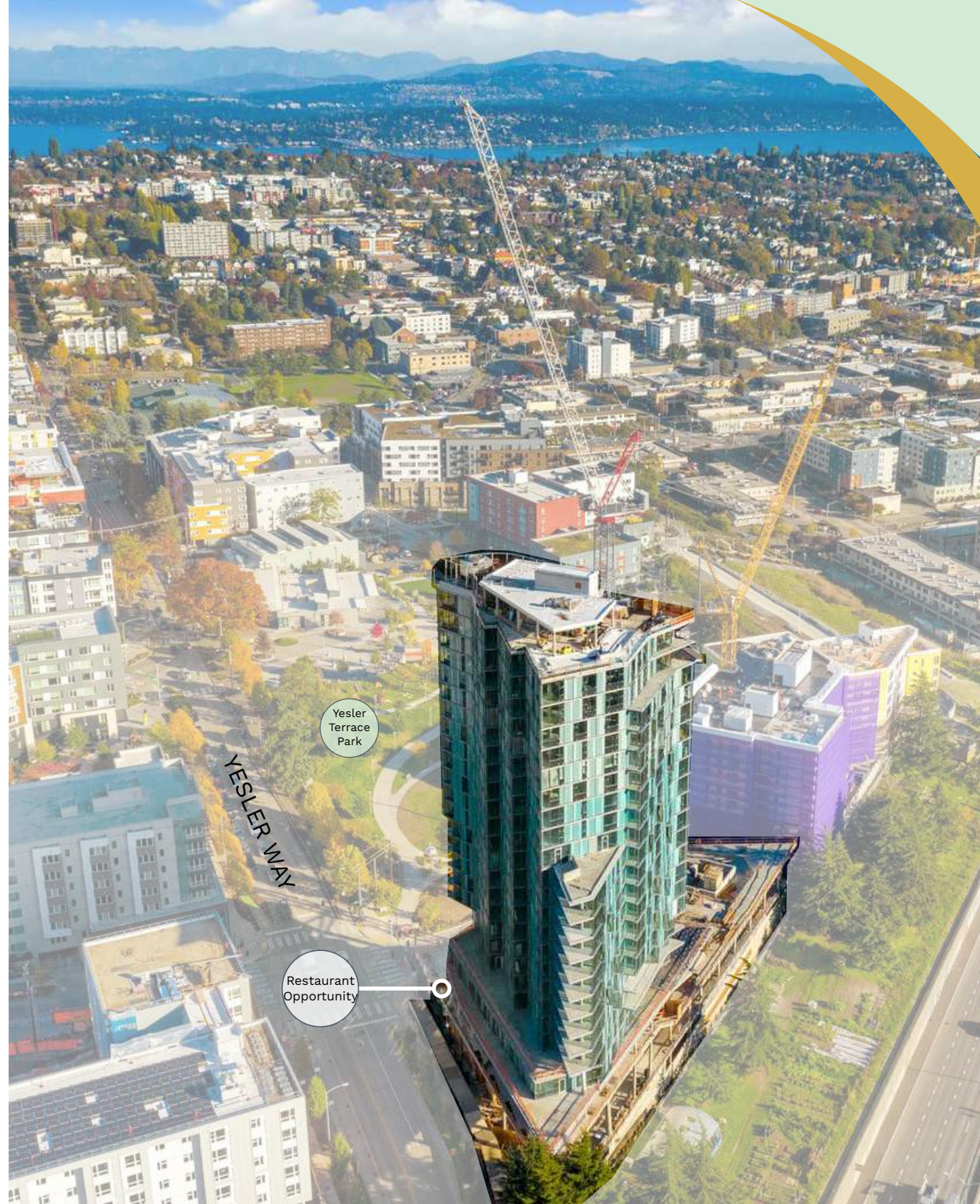


## Why Yesler Towers?

- Immerse your business in a community that respects and celebrates its roots.
- Enjoy the natural beauty of the Yesler Terrace neighborhood, seamlessly integrated into our elevated designs.
- Be part of a dynamic environment that fosters creativity and collaboration.



**WCCR**  
West Coast Commercial Realty







## Connect with Us Today!

Seize the opportunity to be part of Yesler Towers – a place where history and innovation coexist harmoniously. Contact us to secure your spot in these exclusive commercial spaces and become a vital part of the Yesler Terrace legacy. Your future awaits at Yesler Towers – Embracing New Heights!

Kara Farley | Blake Taylor

(206) 283-5212

[www.wccommercialrealty.com](http://www.wccommercialrealty.com)



DISCLAIMER: The above information has been secured from sources believed to be reliable, however, no representations are made to its accuracy. Prospective tenants or buyers should consult their professional advisors and conduct their own independent investigation. Site plan and configuration are subject to change. Properties are subject to change in price and/or availability without notice. West Coast Commercial Realty, LLC

# WCCR

West Coast Commercial Realty