



# Valley Health Center

4300 TALBOT ROAD SOUTH, RENTON, WA

## FOR LEASE



For leasing  
information contact

**BRIAN CLAPP**  
206.248.7316  
[brian.clapp@kidder.com](mailto:brian.clapp@kidder.com)

**SPENCER CLAPP**  
206.248.7427  
[spencer.clapp@kidder.com](mailto:spencer.clapp@kidder.com)

**Kidder  
Mathews**

Building owned and managed by  
**HEALTHCARE REALTY**

This information supplied herein is from sources we deem reliable. It is provided without any representation, warranty, or guarantee, expressed or implied as to its accuracy. Prospective Buyer or Tenant should conduct an independent investigation and verification of all matters deemed to be material, including, but not limited to, statements of income and expenses. Consult your attorney, accountant, or other professional advisor.

**KIDDER.COM**



**FOR LEASE**

# Valley Health Center

4300 TALBOT ROAD SOUTH, RENTON, WA



32,828 SF  
medical /  
dental center

Easy access from SR-167,  
I-405 and I-5

Medical build-outs with  
ample free parking

Monument and directory  
signage available

Quality, affordable medical  
spaces directly across the  
street from UW Medicine  
Valley Medical Center

Suite 310: 1,393 RSF

Available May 1, 2025

**BRIAN CLAPP**  
206.248.7316  
brian.clapp@kidder.com

**SPENCER CLAPP**  
206.248.7427  
spencer.clapp@kidder.com

[KIDDER.COM](http://KIDDER.COM)

This information supplied herein is from sources we deem reliable. It is provided without any representation, warranty, or guarantee, expressed or implied as to its accuracy. Prospective Buyer or Tenant should conduct an independent investigation and verification of all matters deemed to be material, including, but not limited to, statements of income and expenses. Consult your attorney, accountant, or other professional advisor.

 **Kidder  
Mathews**



FOR LEASE

# Valley Health Center

4300 TALBOT ROAD SOUTH, RENTON, WA



**BRIAN CLAPP**  
206.248.7316  
brian.clapp@kidder.com

**SPENCER CLAPP**  
206.248.7427  
spencer.clapp@kidder.com

KIDDER.COM

This information supplied herein is from sources we deem reliable. It is provided without any representation, warranty, or guarantee, expressed or implied as to its accuracy. Prospective Buyer or Tenant should conduct an independent investigation and verification of all matters deemed to be material, including, but not limited to, statements of income and expenses. Consult your attorney, accountant, or other professional advisor.

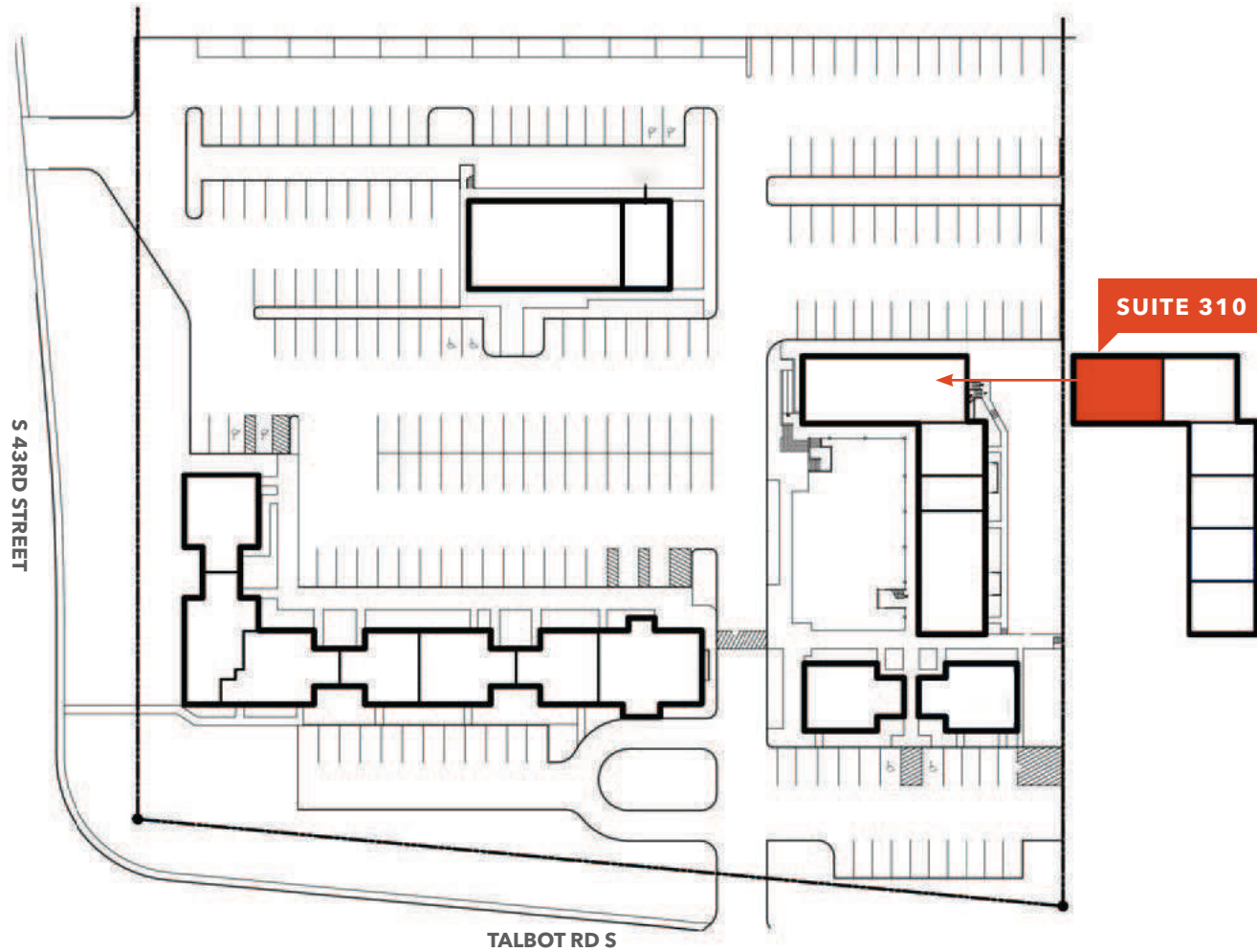


FOR LEASE

# Valley Health Center

4300 TALBOT ROAD SOUTH, RENTON, WA

## Site Plan



KIDDER.COM

This information supplied herein is from sources we deem reliable. It is provided without any representation, warranty, or guarantee, expressed or implied as to its accuracy. Prospective Buyer or Tenant should conduct an independent investigation and verification of all matters deemed to be material, including, but not limited to, statements of income and expenses. Consult your attorney, accountant, or other professional advisor.

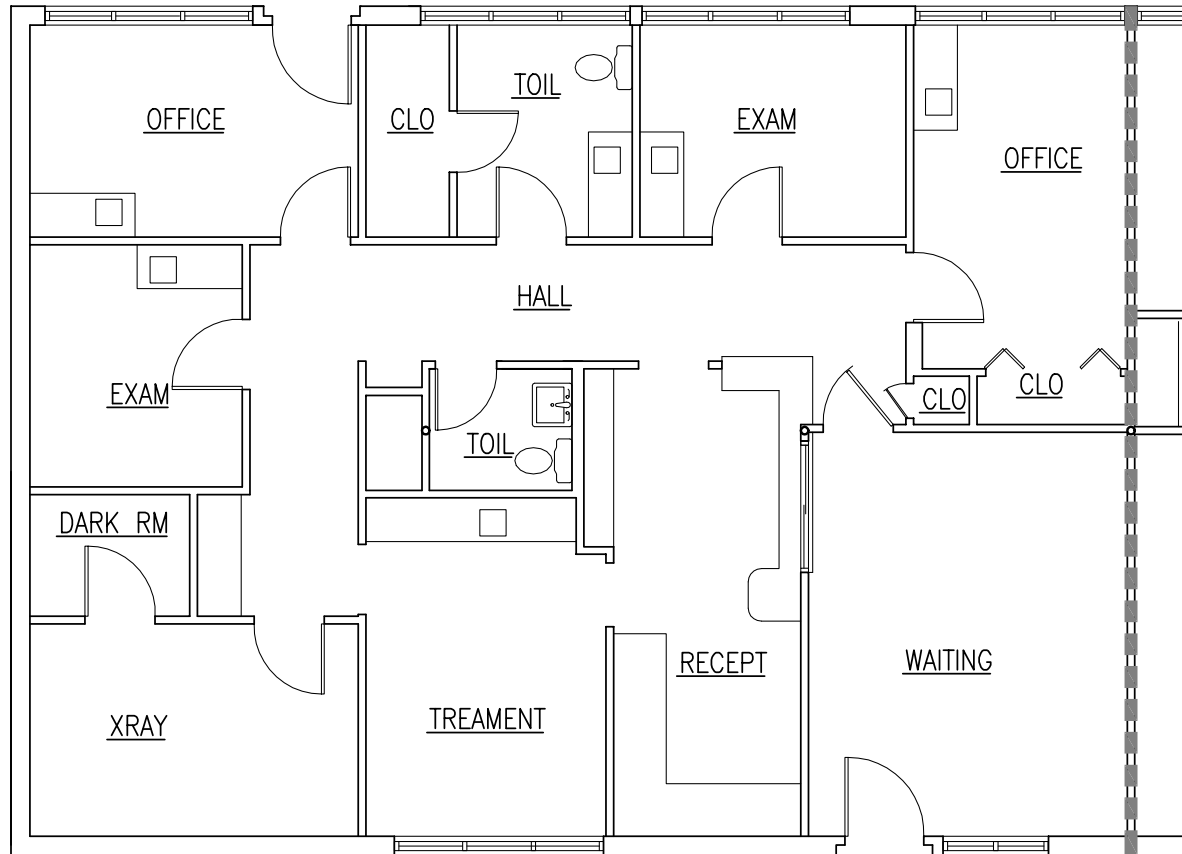
**km** Kidder Mathews

FOR LEASE

# Valley Health Center

4300 TALBOT ROAD SOUTH, RENTON, WA

Suite 310 - 1,393 RSF



KIDDER.COM

This information supplied herein is from sources we deem reliable. It is provided without any representation, warranty, or guarantee, expressed or implied as to its accuracy. Prospective Buyer or Tenant should conduct an independent investigation and verification of all matters deemed to be material, including, but not limited to, statements of income and expenses. Consult your attorney, accountant, or other professional advisor.

