

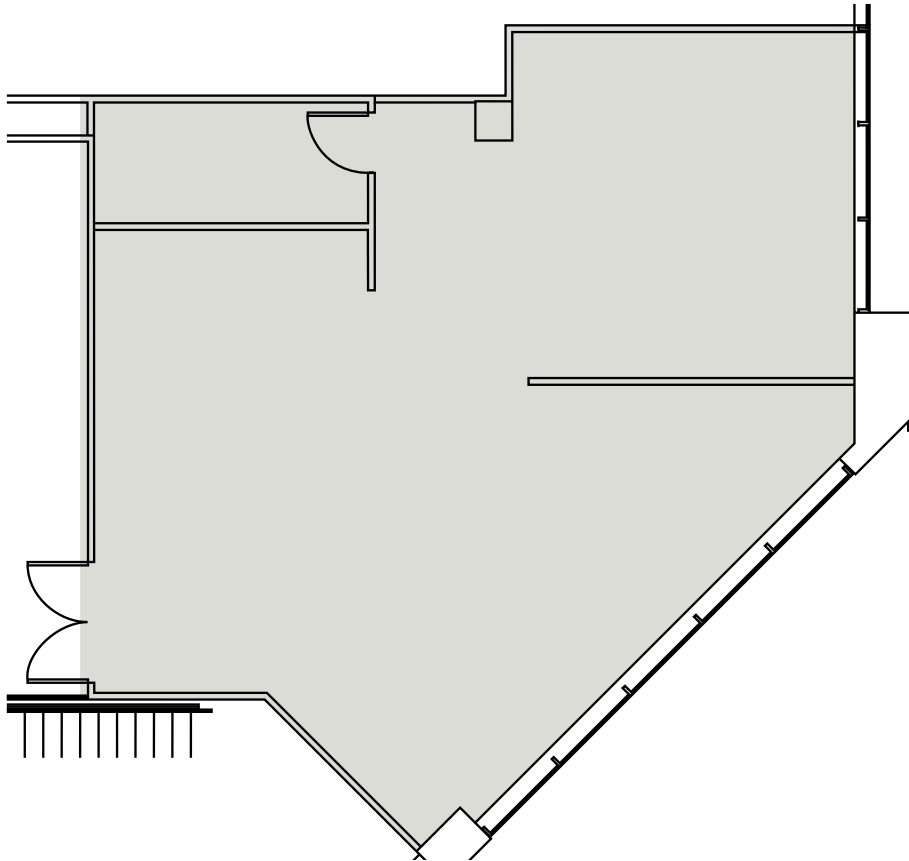
# PLAZA EAST

11100 NE 8TH STREET  
BELLEVUE, WA

## SUITE 200

1,449 SF

Available Now



## Contacts

### SCOTT M. DAVIS

Executive Vice President

T 425 941 7573

scott.davis@cbre.com

### LENNON ATTEBERRY

First Vice President

T 425 462 6991

lennon.attedberry@cbre.com



CLARION PARTNERS



© 2024 CBRE, Inc. All rights reserved. This information has been obtained from sources believed reliable, but has not been verified for accuracy or completeness. You should conduct a careful, independent investigation of the property and verify all information. Any reliance on this information is solely at your own risk. CBRE and the CBRE logo are service marks of CBRE, Inc. All other marks displayed on this document are the property of their respective owners, and the use of such logos does not imply any affiliation with or endorsement of CBRE. Photos herein are the property of their respective owners. Use of these images without the express written consent of the owner is prohibited. PMStudio\_August2024

# PLAZA EAST

11100 NE 8TH STREET  
BELLEVUE, WA

## SUITE 300

8,705 SF

Available Now



VIRTUAL TOUR  
AVAILABLE



## Contacts

### SCOTT M. DAVIS

Executive Vice President

T 425 941 7573

scott.davis@cbre.com

### LENNON ATTEBERRY

First Vice President

T 425 462 6991

lennon.attedberry@cbre.com



CLARION PARTNERS



© 2024 CBRE, Inc. All rights reserved. This information has been obtained from sources believed reliable, but has not been verified for accuracy or completeness. You should conduct a careful, independent investigation of the property and verify all information. Any reliance on this information is solely at your own risk. CBRE and the CBRE logo are service marks of CBRE, Inc. All other marks displayed on this document are the property of their respective owners, and the use of such logos does not imply any affiliation with or endorsement of CBRE. Photos herein are the property of their respective owners. Use of these images without the express written consent of the owner is prohibited. PMStudio\_August2024

# PLAZA EAST

11100 NE 8TH STREET  
BELLEVUE, WA

## FLOOR 5

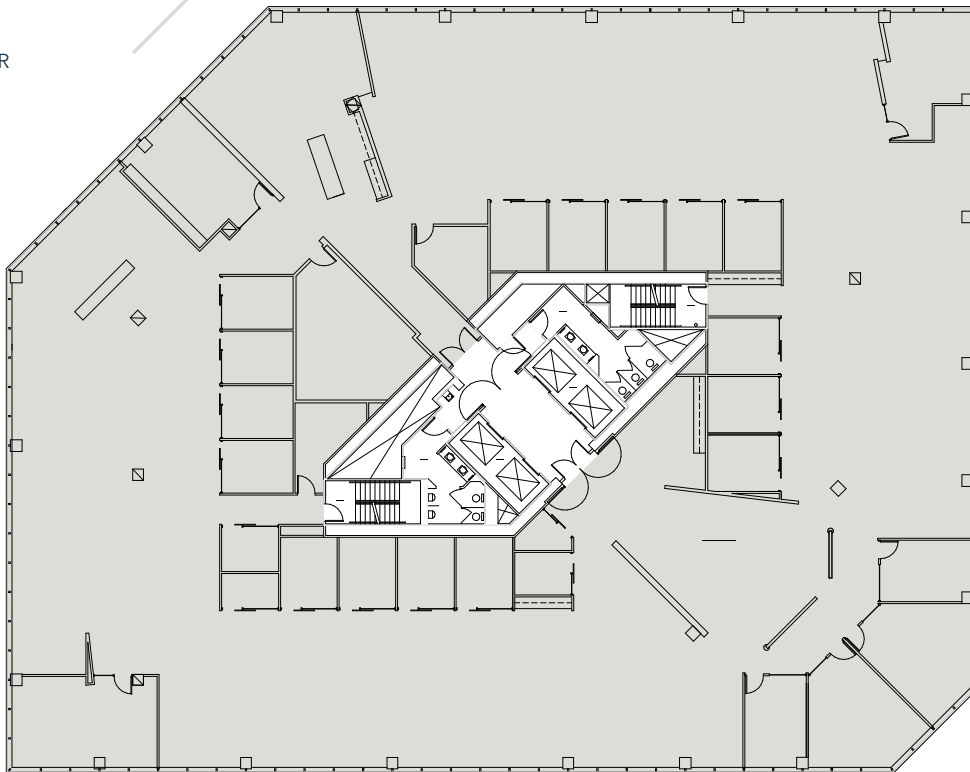
Conceptual Layout

21,861 SF

Available Now



VIRTUAL TOUR  
AVAILABLE



## Contacts

### SCOTT M. DAVIS

Executive Vice President

T 425 941 7573

scott.davis@cbre.com

### LENNON ATTEBERRY

First Vice President

T 425 462 6991

lennon.attedberry@cbre.com



CLARION PARTNERS



© 2024 CBRE, Inc. All rights reserved. This information has been obtained from sources believed reliable, but has not been verified for accuracy or completeness. You should conduct a careful, independent investigation of the property and verify all information. Any reliance on this information is solely at your own risk. CBRE and the CBRE logo are service marks of CBRE, Inc. All other marks displayed on this document are the property of their respective owners, and the use of such logos does not imply any affiliation with or endorsement of CBRE. Photos herein are the property of their respective owners. Use of these images without the express written consent of the owner is prohibited. PMStudio\_August2024

11100 NE 8TH STREET  
BELLEVUE, WA

# PLAZA EAST

## FLOOR 5

Conceptual Seating Chart  
21,861 SF  
Available Now



## Contacts

**SCOTT M. DAVIS**  
Executive Vice President  
T 425 941 7573  
scott.davis@cbre.com

**LENNON ATTEBERRY**  
First Vice President  
T 425 462 6991  
lennon.attedberry@cbre.com



© 2024 CBRE, Inc. All rights reserved. This information has been obtained from sources believed reliable, but has not been verified for accuracy or completeness. You should conduct a careful, independent investigation of the property and verify all information. Any reliance on this information is solely at your own risk. CBRE and the CBRE logo are service marks of CBRE, Inc. All other marks displayed on this document are the property of their respective owners, and the use of such logos does not imply any affiliation with or endorsement of CBRE. Photos herein are the property of their respective owners. Use of these images without the express written consent of the owner is prohibited. PMStudio\_August2024