

For Lease

# MAPLEWOOD MEDICAL CENTER

33915 1ST WAY S, FEDERAL WAY, WA

*Exclusively leased by*

**WILL FRAME**

253.722.1412

will.frame@kidder.com

**DREW FRAME**

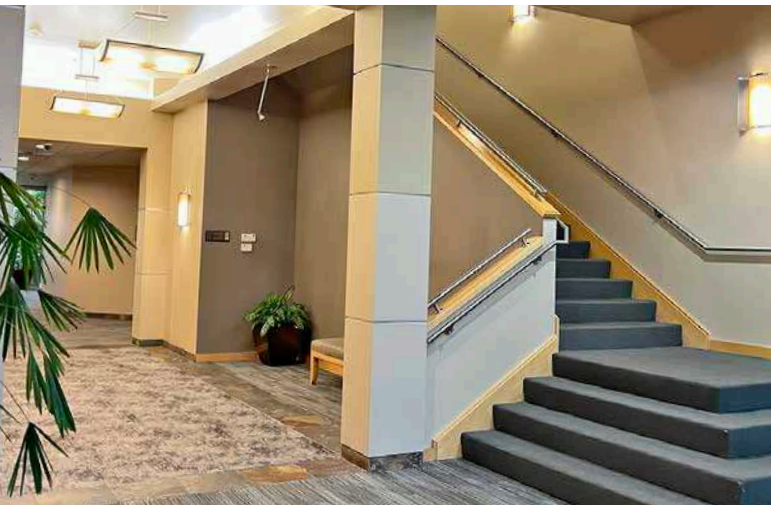
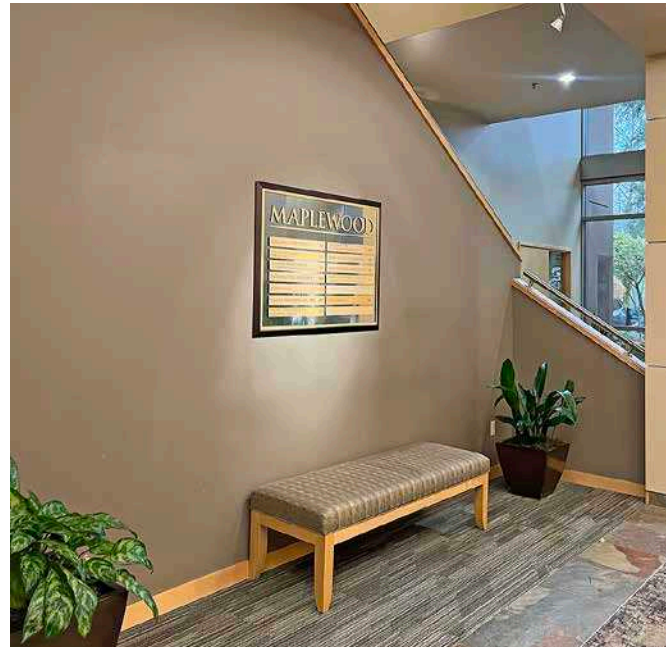
253.722.1433

drew.frame@kidder.com

**KIDDER.COM**

**km Kidder Mathews**





## *Class "A" Medical Office*

SUITE 114 2,290 SF

SUITE 126 1,011 SF

SUITE 140 3,349 SF

SUITE 204 1,570 SF

RATE \$17.00 PSF, NNN

HOSPITAL SYNERGY Located a block from Virginia Mason and less than a mile from the St Francis Hospital Campus

LOCATION Central location with easy access to I-5

TENANTS Join tenants Patricia Kho DDS, GI Alliance, Kids on 1st Dentistry, and Silver Falls Dermatology

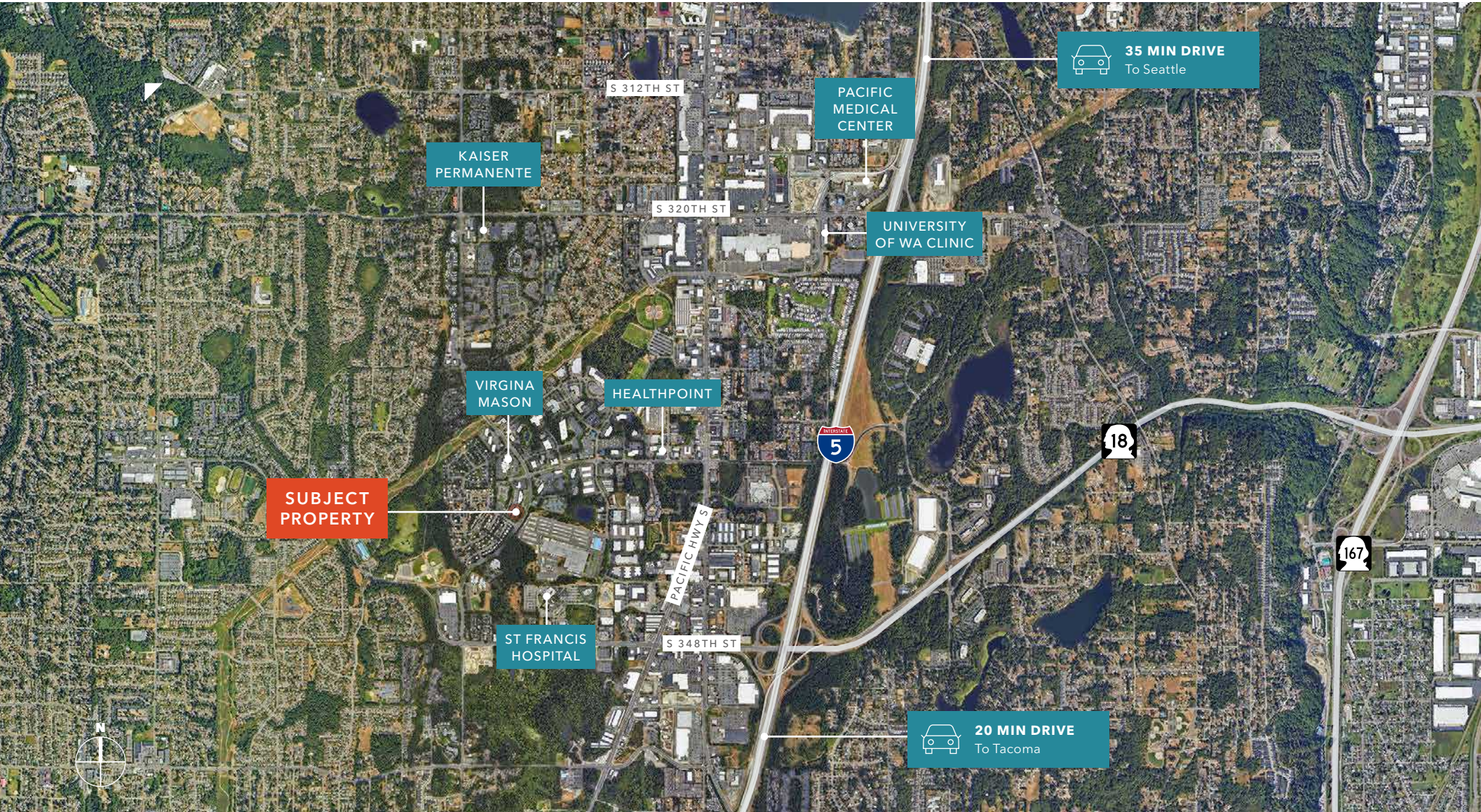
SECOND GEN Multiple suites with existing medical buildouts that are ready for occupancy

KIDDER.COM

This information supplied herein is from sources we deem reliable. It is provided without any representation, warranty, or guarantee, expressed or implied as to its accuracy. Prospective Buyer or Tenant should conduct an independent investigation and verification of all matters deemed to be material, including, but not limited to, statements of income and expenses. Consult your attorney, accountant, or other professional advisor.



# MAPLEWOOD MEDICAL CENTER

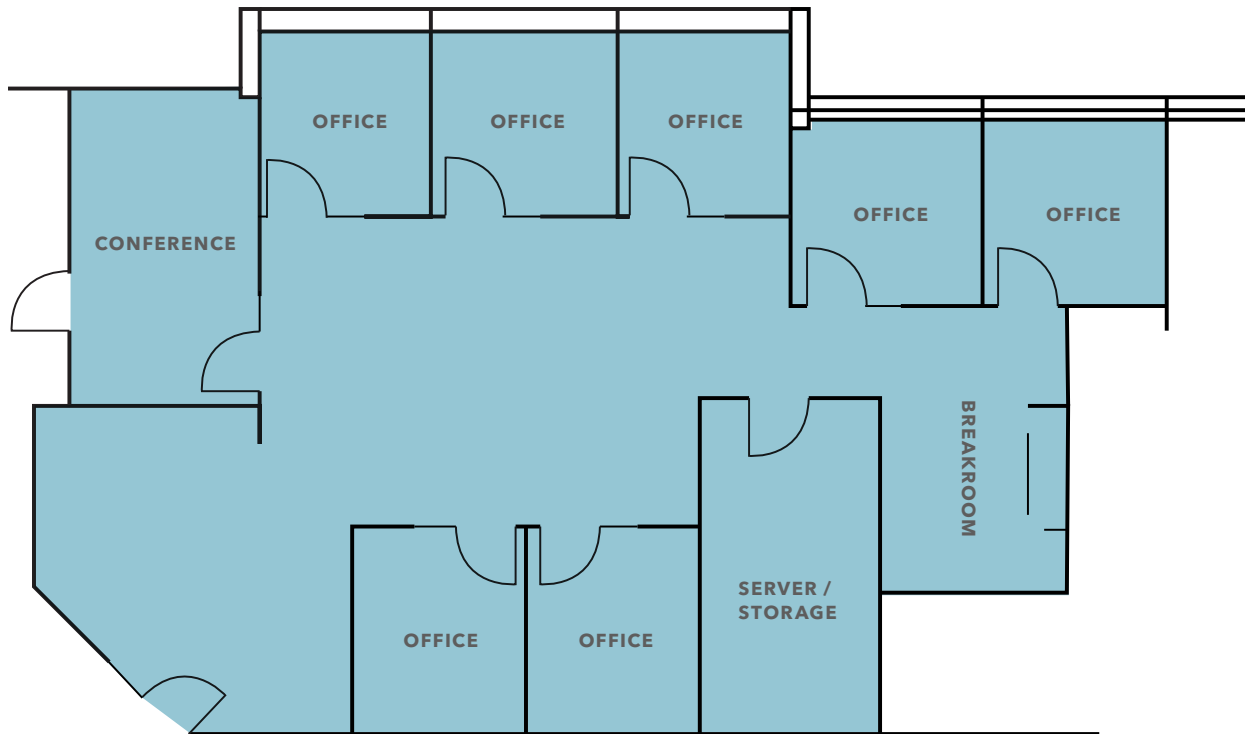


KIDDER.COM

This information supplied herein is from sources we deem reliable. It is provided without any representation, warranty, or guarantee, expressed or implied as to its accuracy. Prospective Buyer or Tenant should conduct an independent investigation and verification of all matters deemed to be material, including, but not limited to, statements of income and expenses. Consult your attorney, accountant, or other professional advisor.

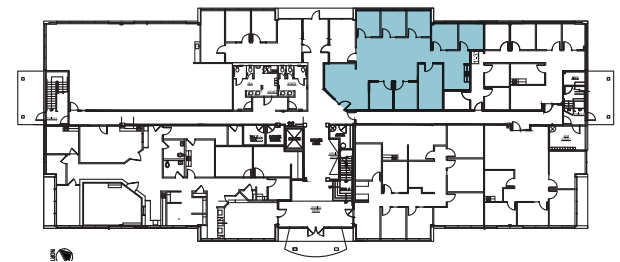


# SUITE 114



**SPACE PROGRAM**

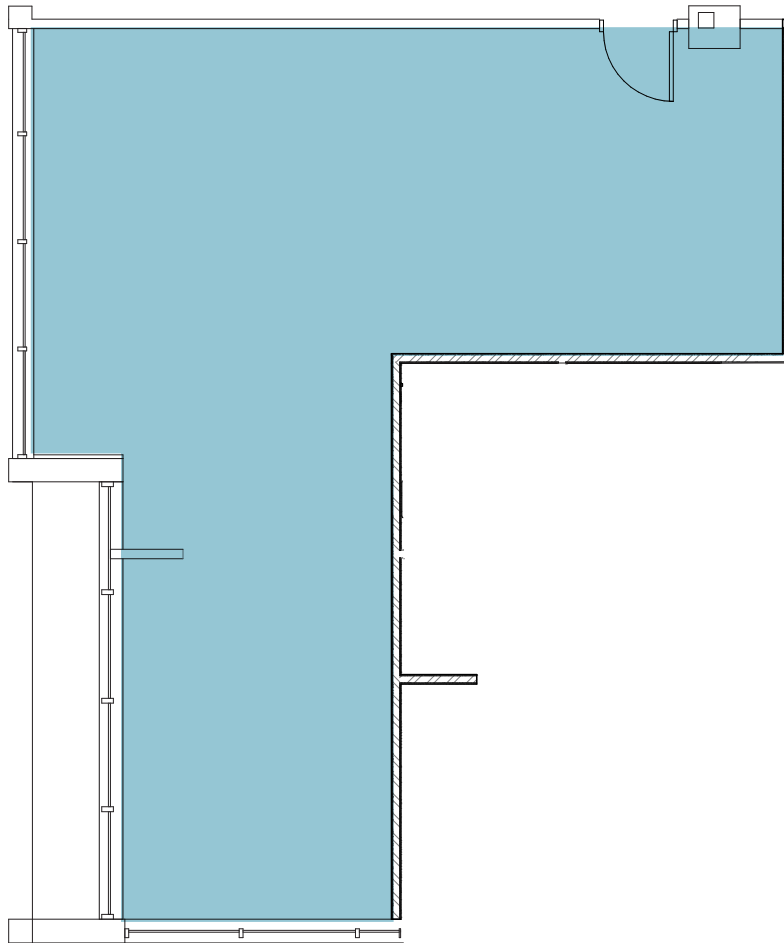
- Spacious Reception
- 7 Private Offices
- 1 Conference Room
- Staff Breakroom
- Server/Storage Room



[KIDDER.COM](http://KIDDER.COM)

This information supplied herein is from sources we deem reliable. It is provided without any representation, warranty, or guarantee, expressed or implied as to its accuracy. Prospective Buyer or Tenant should conduct an independent investigation and verification of all matters deemed to be material, including, but not limited to, statements of income and expenses. Consult your attorney, accountant, or other professional advisor.

# SUITE 126

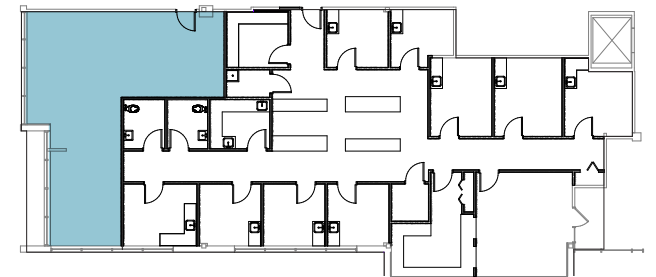


1,011 SF

AVAILABLE

\$17.00

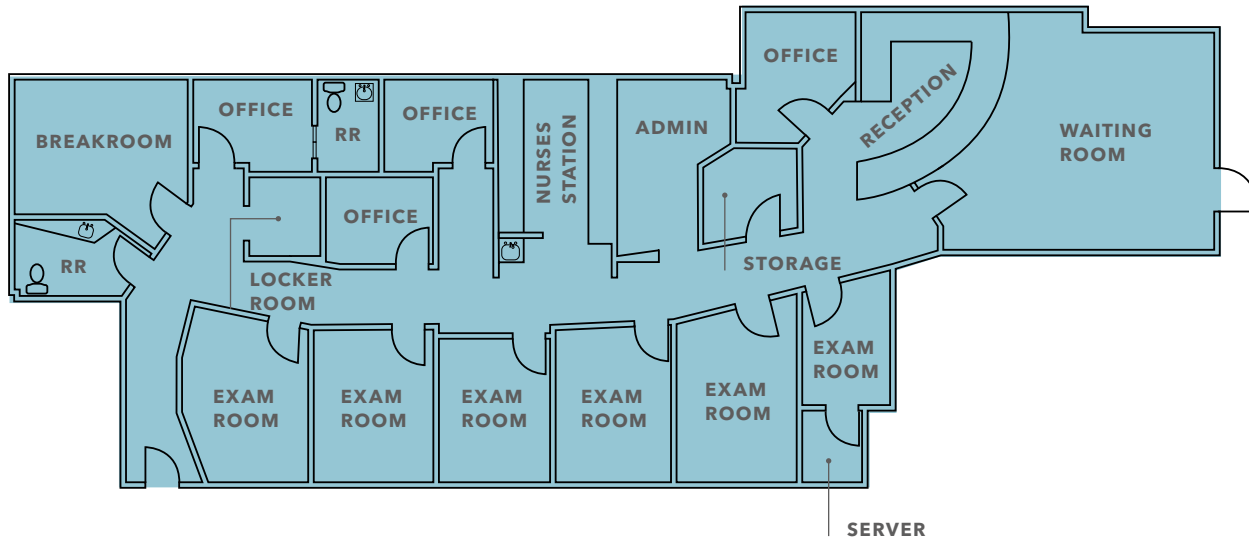
LEASE RATE (SF/YR)



[KIDDER.COM](http://KIDDER.COM)

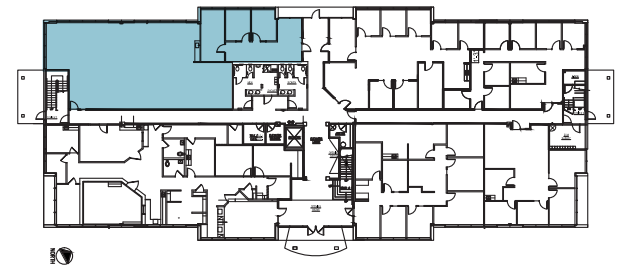
This information supplied herein is from sources we deem reliable. It is provided without any representation, warranty, or guarantee, expressed or implied as to its accuracy. Prospective Buyer or Tenant should conduct an independent investigation and verification of all matters deemed to be material, including, but not limited to, statements of income and expenses. Consult your attorney, accountant, or other professional advisor.

# SUITE 140



**SPACE PROGRAM**

- Spacious Waiting & Reception Room
- Breakroom
- Staff Locker Room
- 4 Private Offices
- 6 Exam Rooms
- 2 In-Suite Restrooms
- Server Room
- Nurses Station
- Admin room



**3,349 SF**  
AVAILABLE

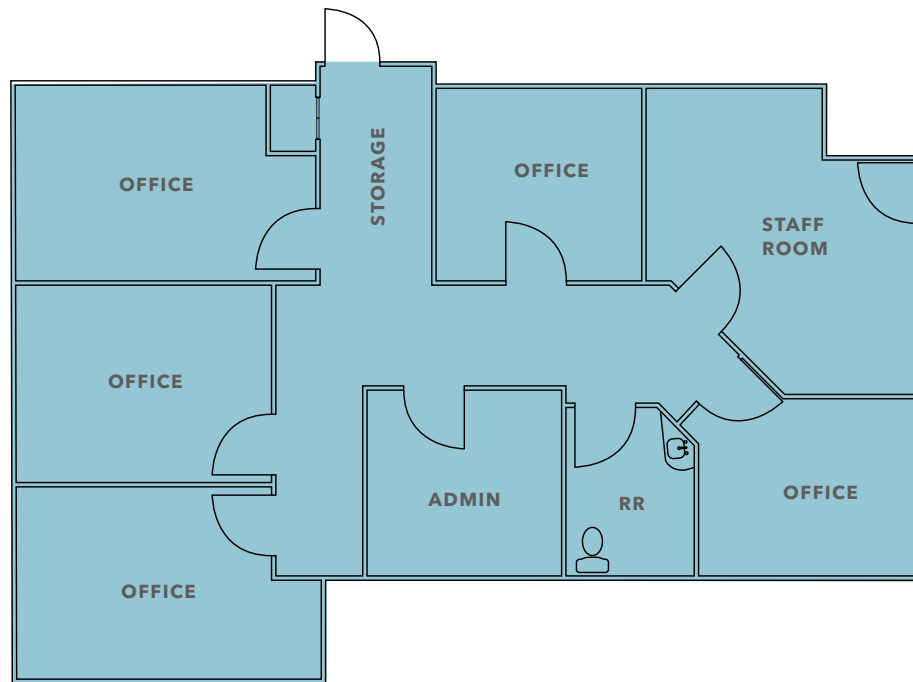
**\$17.00**  
LEASE RATE (SF/YR)

[KIDDER.COM](http://KIDDER.COM)

This information supplied herein is from sources we deem reliable. It is provided without any representation, warranty, or guarantee, expressed or implied as to its accuracy. Prospective Buyer or Tenant should conduct an independent investigation and verification of all matters deemed to be material, including, but not limited to, statements of income and expenses. Consult your attorney, accountant, or other professional advisor.

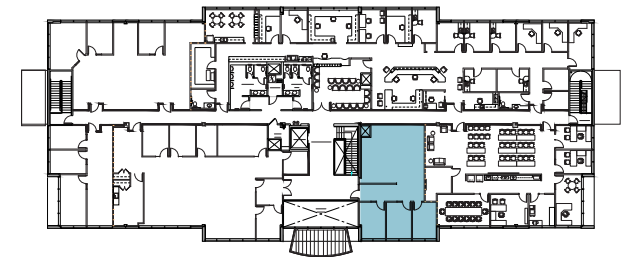


# SUITE 204



**SPACE PROGRAM**

- 1 In-Suite Restroom
- 5 Private Offices
- Admin Room
- Staff Breakroom
- Storage Closet



**1,570 SF**  
AVAILABLE

**\$17.00**  
LEASE RATE (SF/YR)

[KIDDER.COM](http://KIDDER.COM)

This information supplied herein is from sources we deem reliable. It is provided without any representation, warranty, or guarantee, expressed or implied as to its accuracy. Prospective Buyer or Tenant should conduct an independent investigation and verification of all matters deemed to be material, including, but not limited to, statements of income and expenses. Consult your attorney, accountant, or other professional advisor.



# MAPLEWOOD MEDICAL ENTER

S 348TH ST

1ST WAY S

*Exclusively leased by*

WILL FRAME  
253.722.1412  
will.frame@kidder.com

DREW FRAME  
253.722.1433  
drew.frame@kidder.com

[KIDDER.COM](http://KIDDER.COM)

This information supplied herein is from sources we deem reliable. It is provided without any representation, warranty, or guarantee, expressed or implied as to its accuracy. Prospective Buyer or Tenant should conduct an independent investigation and verification of all matters deemed to be material, including, but not limited to, statements of income and expenses. Consult your attorney, accountant, or other professional advisor.

 **Kidder  
Mathews**