

Peninsula Medical Building

19917 7th Ave NE, Poulsbo, WA



OWNED & MANAGED BY

ANCHOR
HEALTH PROPERTIES

EXCLUSIVELY LEASED BY

km Kidder
Mathews



Premier Medical Outpatient Building

SUITE INFORMATION

Suite 102: 2,052 RSF
Suite 205: 9,600 RSF

GREAT PARKING

Parking approximately
5 stalls/1,000 SF free parking

REPUTABLE TENANTS

Existing medical tenants include:
Fred Hutchinson Cancer Care, Franciscan
Virginia Mason, and Allied Dermatology

STREET PRESENCE

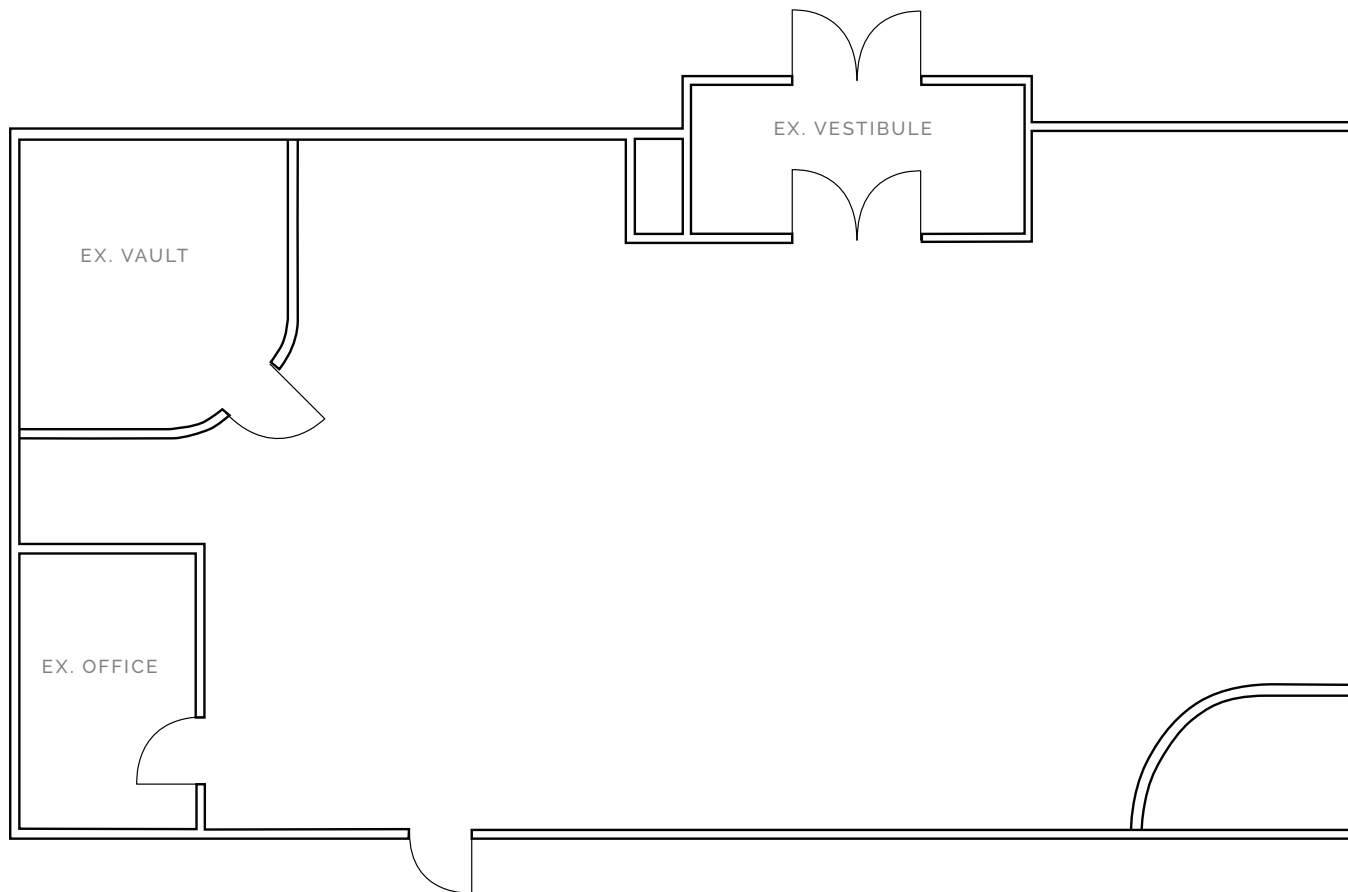
Excellent street presence with monument
signage and potential exterior building
signage

EXCELLENT LOCATION

Provide services to Kitsap County from the
centrally located Poulsbo Market

Suite 102

Current as-built plan, former bank branch.



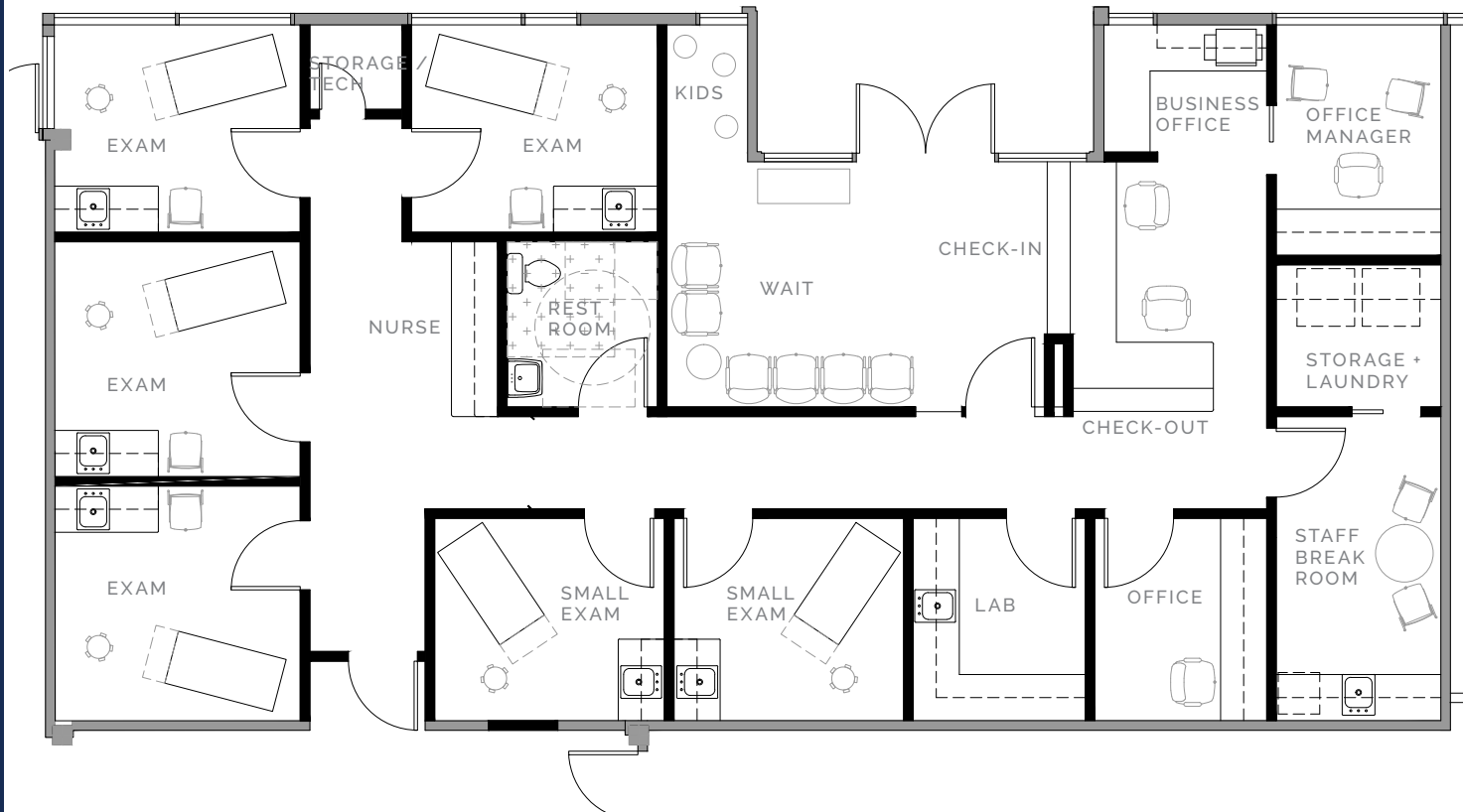
2,052
SQUARE FEET

\$26.00
PSF/NNN

Suite 102

TEST FIT

Space program: Spacious reception and waiting room with kids play area, 4 exam rooms, 1 in suite restroom, 2 private offices, nurses station, staff breakroom, storage/laundry room, storage/tech room and lab room

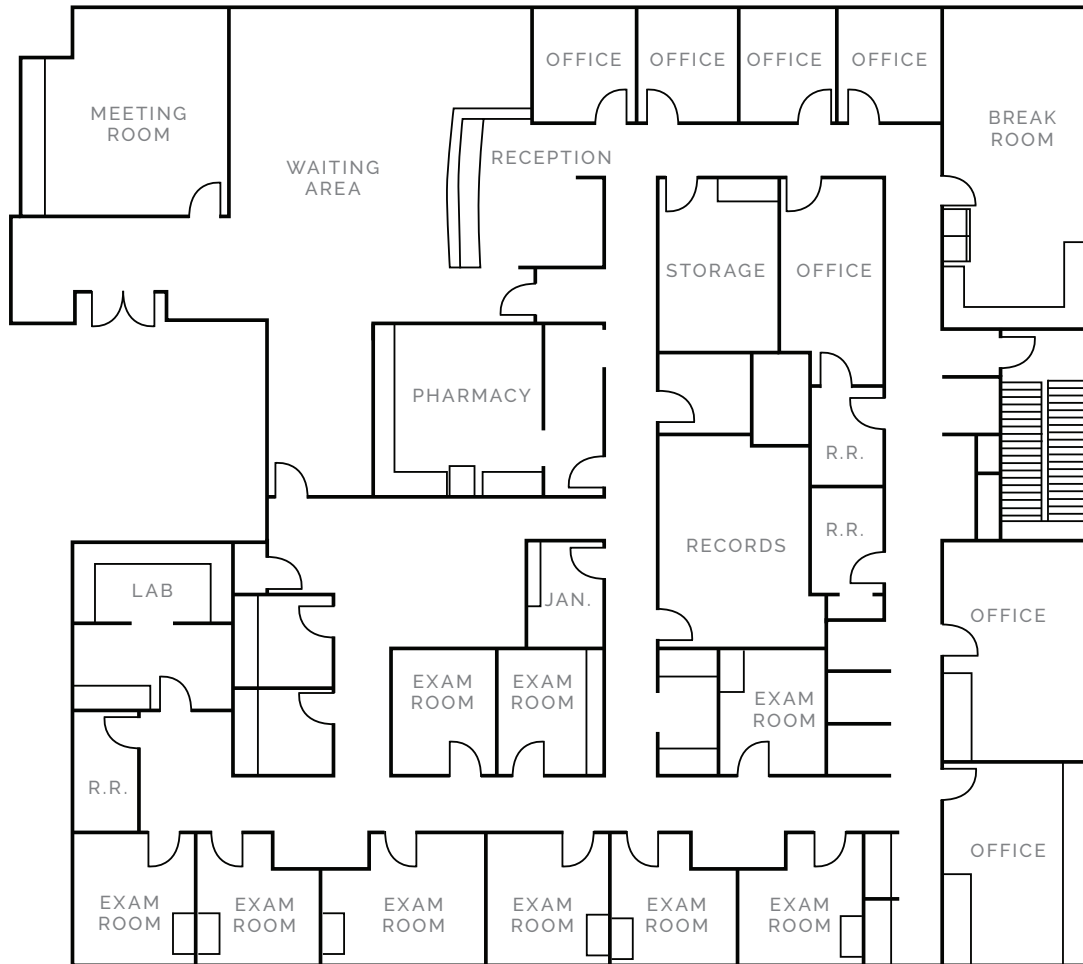


2,052
SQUARE FEET

\$26.00
PSF/NNN

Suite 205

Fully built-out clinic suite with nine exam rooms, lab, multiple offices and breakroom.



9,600
SQUARE FEET

\$26.00
PSF/NNN



Walmart	THE HOME DEPOT	petco
Firestone	Jack in the box	CALIFORNIA PIZZA KITCHEN
FAIRFIELD INN & SUITES	Starbucks	



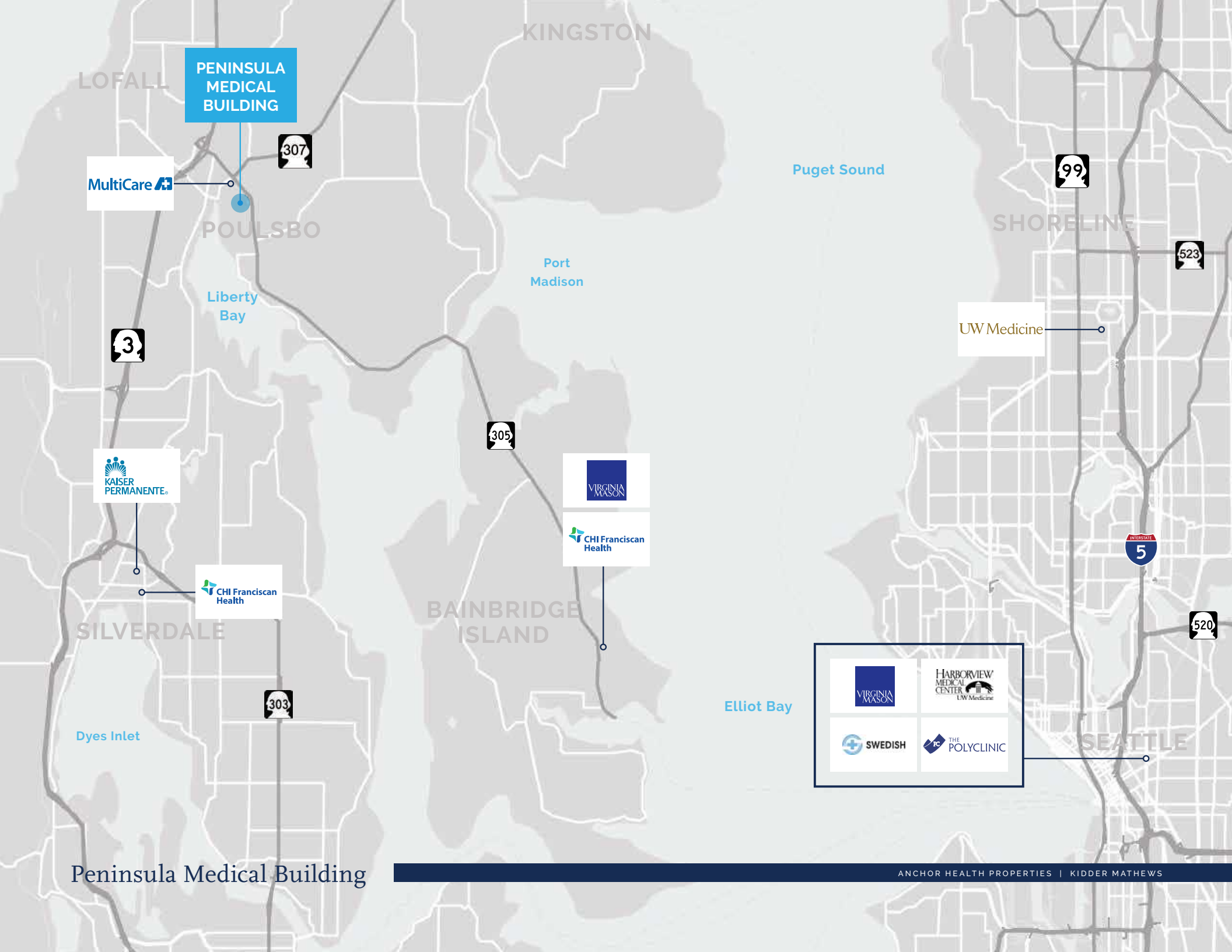
PENINSULA MEDICAL BUILDING

SAFeway	Denny's	DOLLAR TREE
Starbucks	RITE AID	BURGER KING
Express Wash Car Wash	CVS pharmacy	KeyBank
Jerry Mike's	MultiCare	ups



NORTH KITSAP HIGH SCHOOL

LIBERTY BAY



**PENINSULA
MEDICAL
BUILDING**

MultiCare



KAISER
PERMANENTE

CHI Franciscan
Health

SILVERDALE



Dyes Inlet

Peninsula Medical Building

KINGSTON

POULSBO



Liberty Bay

Port Madison



VIRGINIA
MASON
CHI Franciscan
Health

BAINBRIDGE
ISLAND

Puget Sound



SHORELINE



UW Medicine



Elliot Bay



SEATTLE

Peninsula Medical Building

WILL FRAME

Executive Vice President
253.722.1412
will.frame@kidder.com

DREW FRAME

Senior Vice President
253.722.1433
drew.frame@kidder.com

KIDDER.COM

This information supplied herein is from sources we deem reliable. It is provided without any representation, warranty, or guarantee, expressed or implied as to its accuracy. Prospective Buyer or Tenant should conduct an independent investigation and verification of all matters deemed to be material, including, but not limited to, statements of income and expenses. Consult your attorney, accountant, or other professional advisor.



OWNED & MANAGED BY

ANCHOR
HEALTH PROPERTIES

EXCLUSIVELY LEASED BY

km Kidder
Mathews