

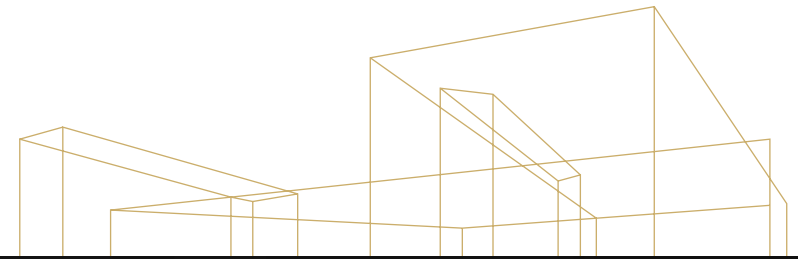
LAKEVIEW PLACE

For Lease

6725 116TH AVE NE, KIRKLAND, WA

 **Kidder
Mathews**

LAKEVIEW PLACE



A class-A office building located in Kirkland, WA, ranked as one of the best small cities in America.



THREE-STORY, CONCRETE & WOOD FRAMED CLASS-A OFFICE BUILDING



PASSENGER ELEVATOR SERVING ALL 3 FLOORS



COMMON AREA RENOVATIONS COMPLETE WITH QUALITY FINISHES



ROOFTOP HVAC UNITS WITH RELATED SHEET METAL DUCTING



COVERED PARKING WITH ADDITIONAL STORAGE UNITS AVAILABLE



VIEWS OF LAKE WASHINGTON AND OLYMPIC MOUNTAINS



CLOSE TO AMENITIES, BUS LINE, PARK & RIDE WITH ACCESS TO I-405



GLASS WINDOWS IN ALUMINUM FRAMES

SOURCE: WALLETHUB 2020

**For leasing
information
contact**

TODD GAUTHIER
425.450.1118
todd.gauthier@kidder.com

JASON BLOOM
425.450.1102
jason.bloom@kidder.com

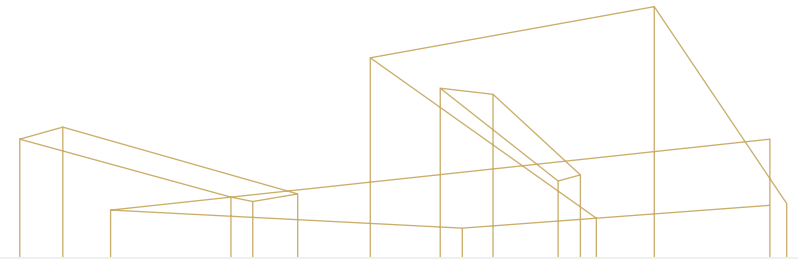
JACK ALBRECHT
425.450.1114
jack.albrecht@kidder.com

KIDDER.COM

This information supplied herein is from sources we deem reliable. It is provided without any representation, warranty, or guarantee, expressed or implied as to its accuracy. Prospective Buyer or Tenant should conduct an independent investigation and verification of all matters deemed to be material, including, but not limited to, statements of income and expenses. Consult your attorney, accountant, or other professional advisor.

**km Kidder
Mathews**

LAKEVIEW PLACE



Suite 200

4,380 RSF

AVAILABLE

\$29.00/SF

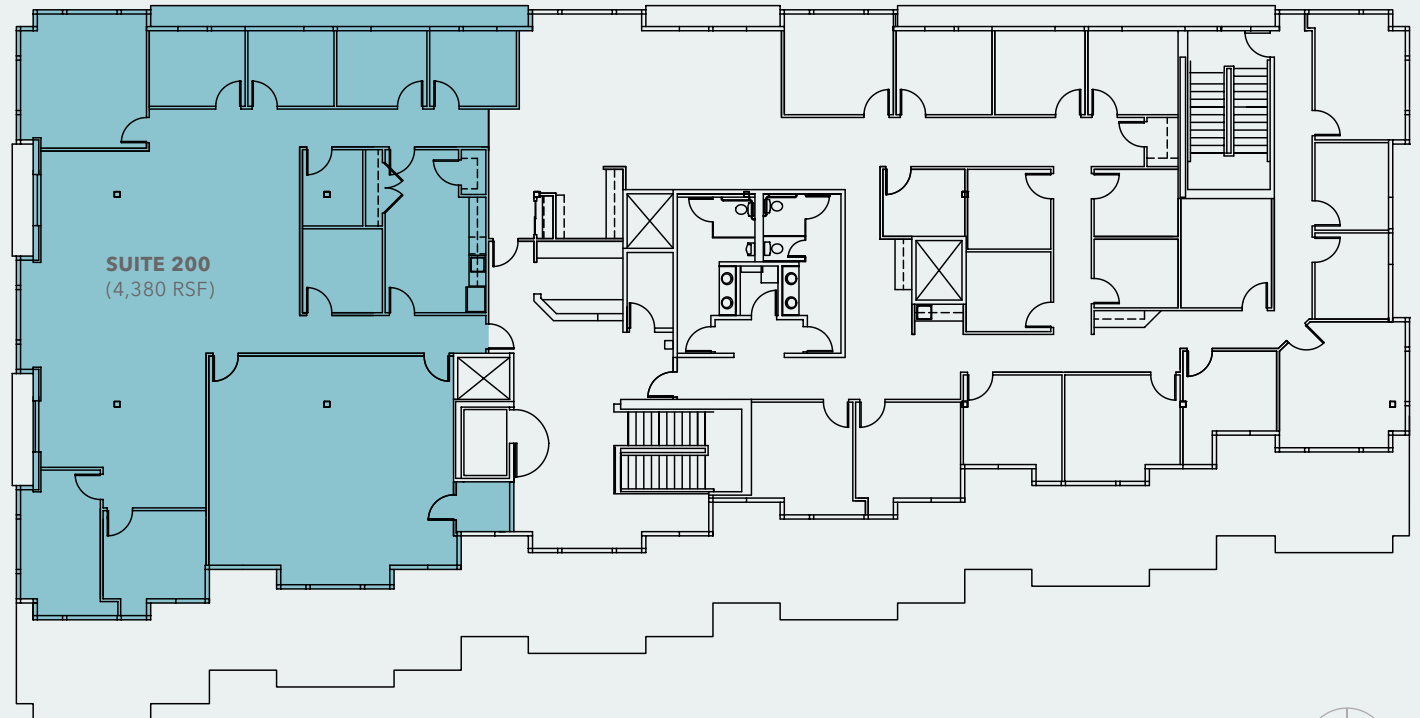
ANNUAL RENTAL RATE, NNN

NOW

AVAILABLE

3.5/1,000

PARKING RATIO



For leasing information contact

TODD GAUTHIER
425.450.1118
todd.gauthier@kidder.com

JASON BLOOM
425.450.1102
jason.bloom@kidder.com

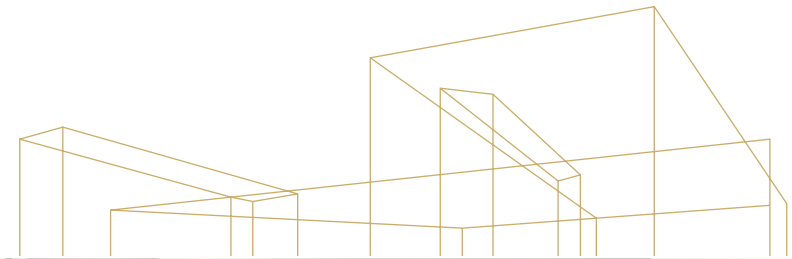
JACK ALBRECHT
425.450.1114
jack.albrecht@kidder.com

KIDDER.COM

This information supplied herein is from sources we deem reliable. It is provided without any representation, warranty, or guarantee, expressed or implied as to its accuracy. Prospective Buyer or Tenant should conduct an independent investigation and verification of all matters deemed to be material, including, but not limited to, statements of income and expenses. Consult your attorney, accountant, or other professional advisor.

km Kidder
Mathews

LAKEVIEW PLACE



For leasing
information
contact

TODD GAUTHIER
425.450.1118
todd.gauthier@kidder.com

JASON BLOOM
425.450.1102
jason.bloom@kidder.com

JACK ALBRECHT
425.450.1114
jack.albrecht@kidder.com

KIDDER.COM

This information supplied herein is from sources we deem reliable. It is provided without any representation, warranty, or guarantee, expressed or implied as to its accuracy. Prospective Buyer or Tenant should conduct an independent investigation and verification of all matters deemed to be material, including, but not limited to, statements of income and expenses. Consult your attorney, accountant, or other professional advisor.

