



Two Union Square

601 Union St,
Seattle, WA 98101

Sublease Available

Floor 9: 8,189 - 21,549 RSF

Floor 8: 4,634 - 14,041 RSF

LED: 4/30/2029

Rate: \$27.50/RSF FS

**UP TO
35,590 RSF**

Clay Nielsen

+1 206 790 3368

clay.nielsen@jll.com

Jones Lang LaSalle Brokerage, Inc. © 2023 Jones Lang LaSalle IP, Inc. All rights reserved. All information contained herein is from sources deemed reliable; however, no representation or warranty is made to the accuracy thereof.






Project Highlights

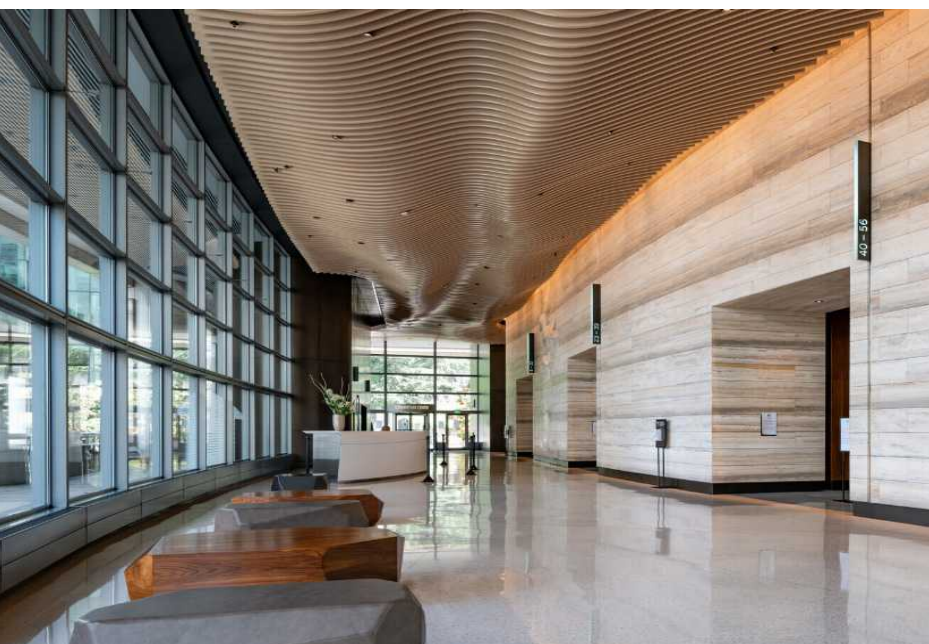
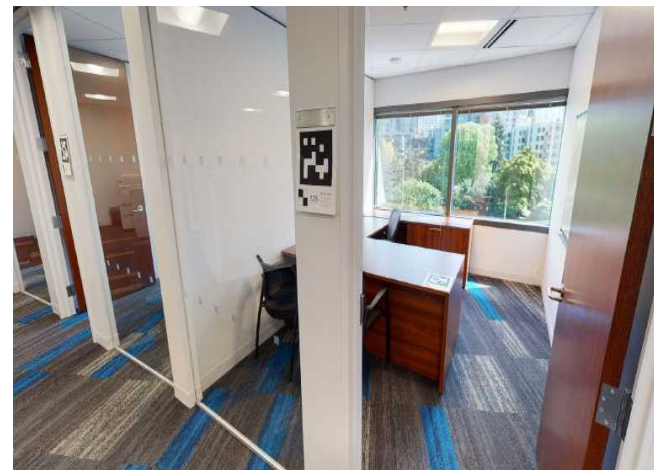
Available: 35,590 RSF

Floor 9: 8,189 - 21,549 RSF

Floor 8: 4,634 - 14,041 RSF

Building Highlights

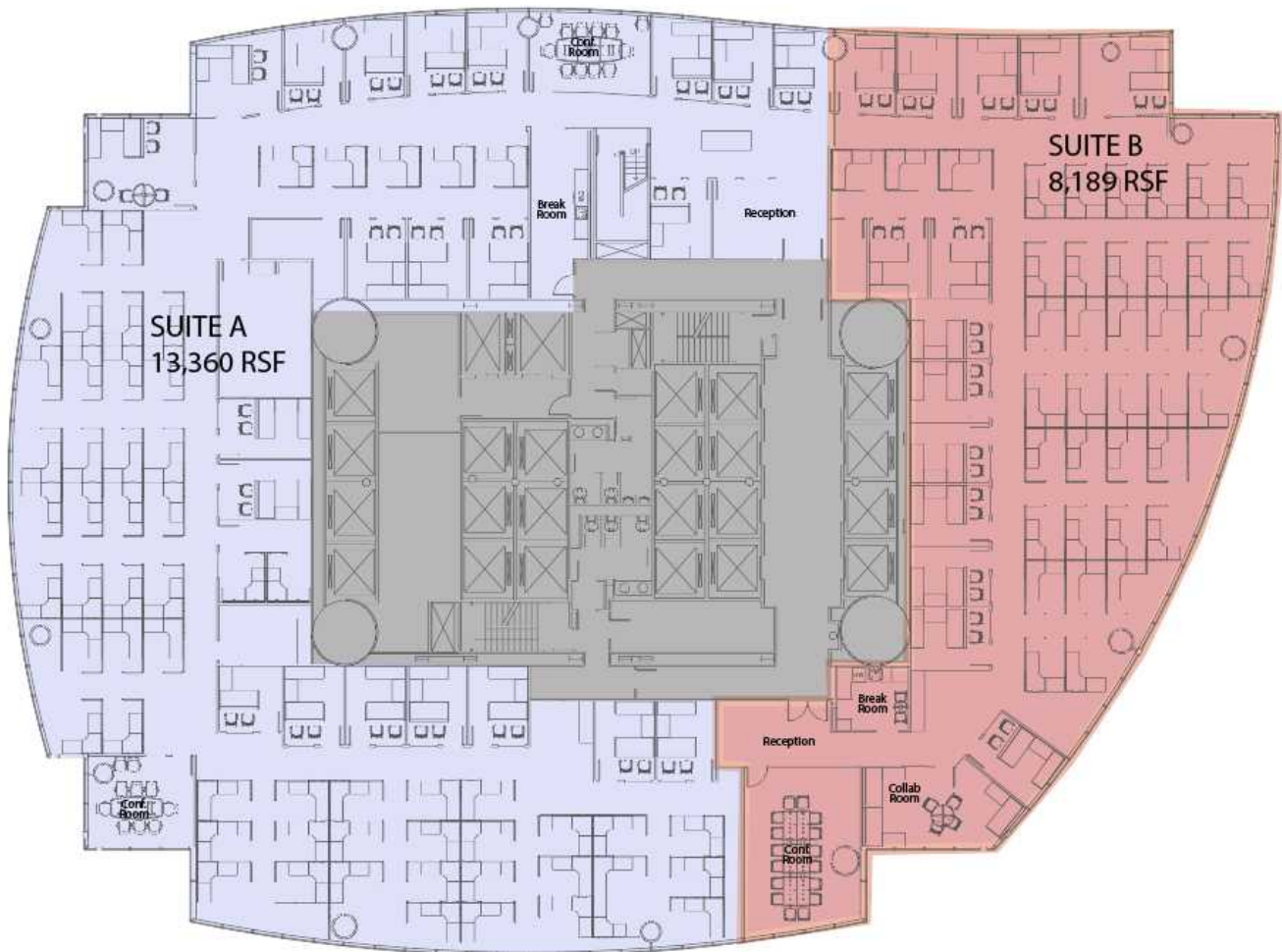
-  • Year built: 1989
-  • Stories: 56
-  • 0.85/1,000 SF Parking with EV charging stations (\$355/mo.)
-  • Space has furniture and workstations available
- Building conference room
- Renovated lobby and tenant lounges
- Fitness facility with locker room and showers
- On-site Starbucks, Evergreens, MOD Pizza and florist
- Bike storage
-  • Conveniently located near I-5, SR-99 and I-90
- Easy access to all transportation - bus line, light rail and monorail



Floor 9

8,189 - 21,549 RSF

LED: 4/30/2029



Click to
virtual tour



SUITE A: 13,360 RSF

- 59 seats
- 22 Private offices
- 2 Conference rooms
- 1 Break room
- Reception

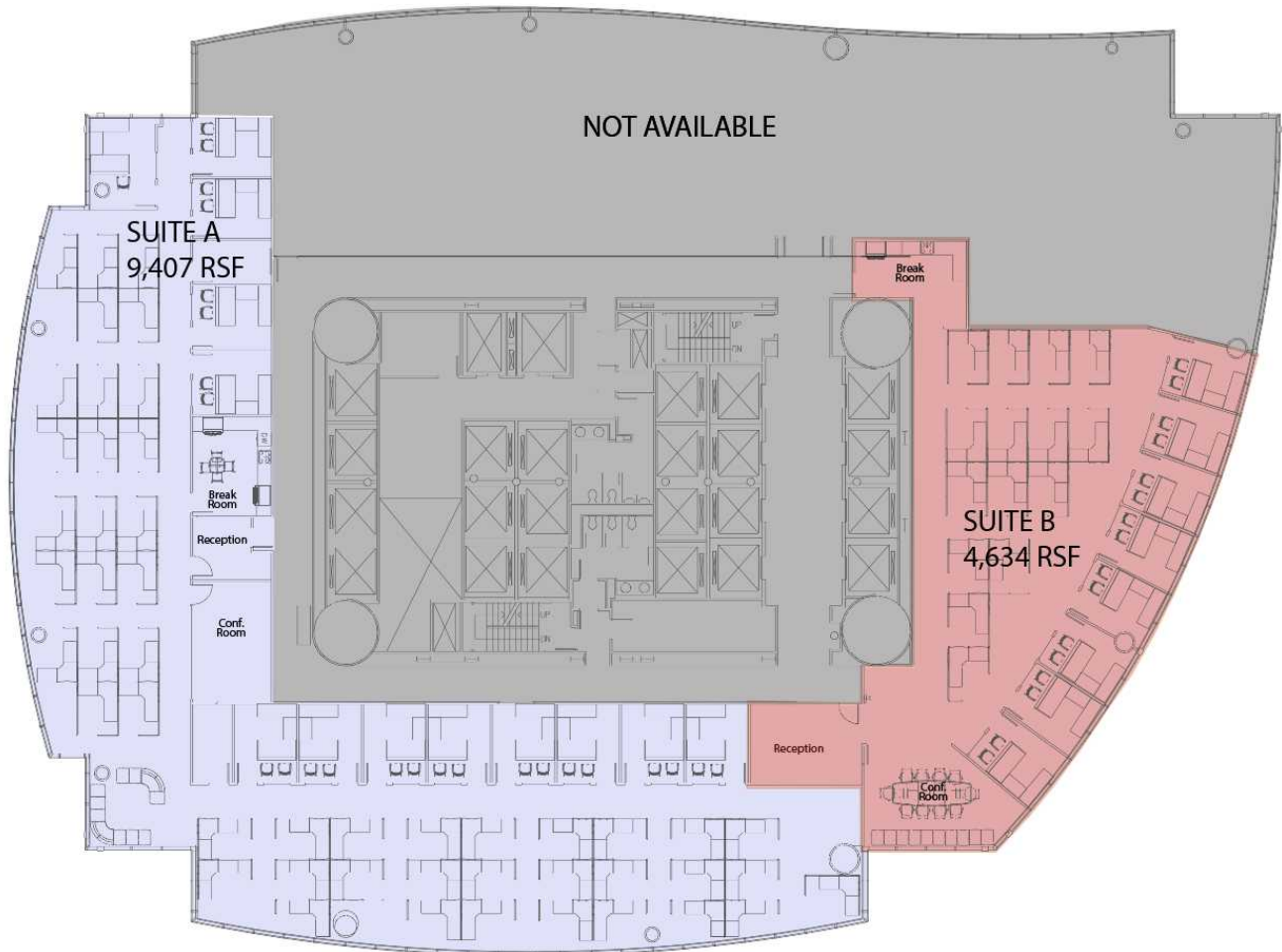
SUITE B: 8,189 RSF

- 38 seats
- 14 Private offices
- 1 Conference room
- 1 Collab room
- 1 Break room
- Reception

Floor 8

4,634 - 14,041 RSF

LED: 4/30/2029



Click to
virtual tour



SUITE A: 9,407 RSF

- 48 seats
- 13 Private offices
- 1 Conference room
- 1 Break room
- Reception

SUITE B: 4,634 RSF

- 15 seats
- 8 Private offices
- 1 Conference room
- 1 Break room
- Reception