

# SEAWAY BUSINESS PARK

1500 Industry Street | **BUILDING H** | Everett, WA



# SEAWAY BUSINESS PARK

1500 Industry Street | **BUILDING H** | Everett, WA

**38,001 SF**  
TOTAL AVAILABLE

OFFICE SPACE AVAILABLE  
**6,480 SF**

FIRST FLOOR  
**3,240 SF**

SECOND FLOOR:  
**3,240 SF**

24' CLEAR  
FULLY INSULATED  
WAREHOUSE AREA  
**31,521 SF**

AVAILABLE  
**1/1/2025**

**16**  
DOCK HIGH  
DOORS

**1 GRADE LEVEL**

DOOR OPENS TO  
COVERED LOADING  
DOOR WITH GRADE  
LEVEL AND DOCK  
HIGH LOADING

# LOCATION

**BRODERICK**  
• GROUP •

**PAINE FIELD  
AIRPORT**

**MUKILTEO  
SPEEDWAY**

**MUKILTEO  
LIGHTHOUSE  
PARK**

**BOEING**

**SEAWAY BLVD**

**SEAWAY  
BUSINESS PARK**

1500 Industry Street | **BUILDING H** | Everett, WA

**526**

**DRIVE TIMES**

**35 MINUTES**

TO DOWNTOWN SEATTLE

**35 MINUTES**

TO DOWNTOWN BELLEVUE

**HARDESON RD**

**MERRILL CREEK PKWY**  
**INDUSTRY ST**

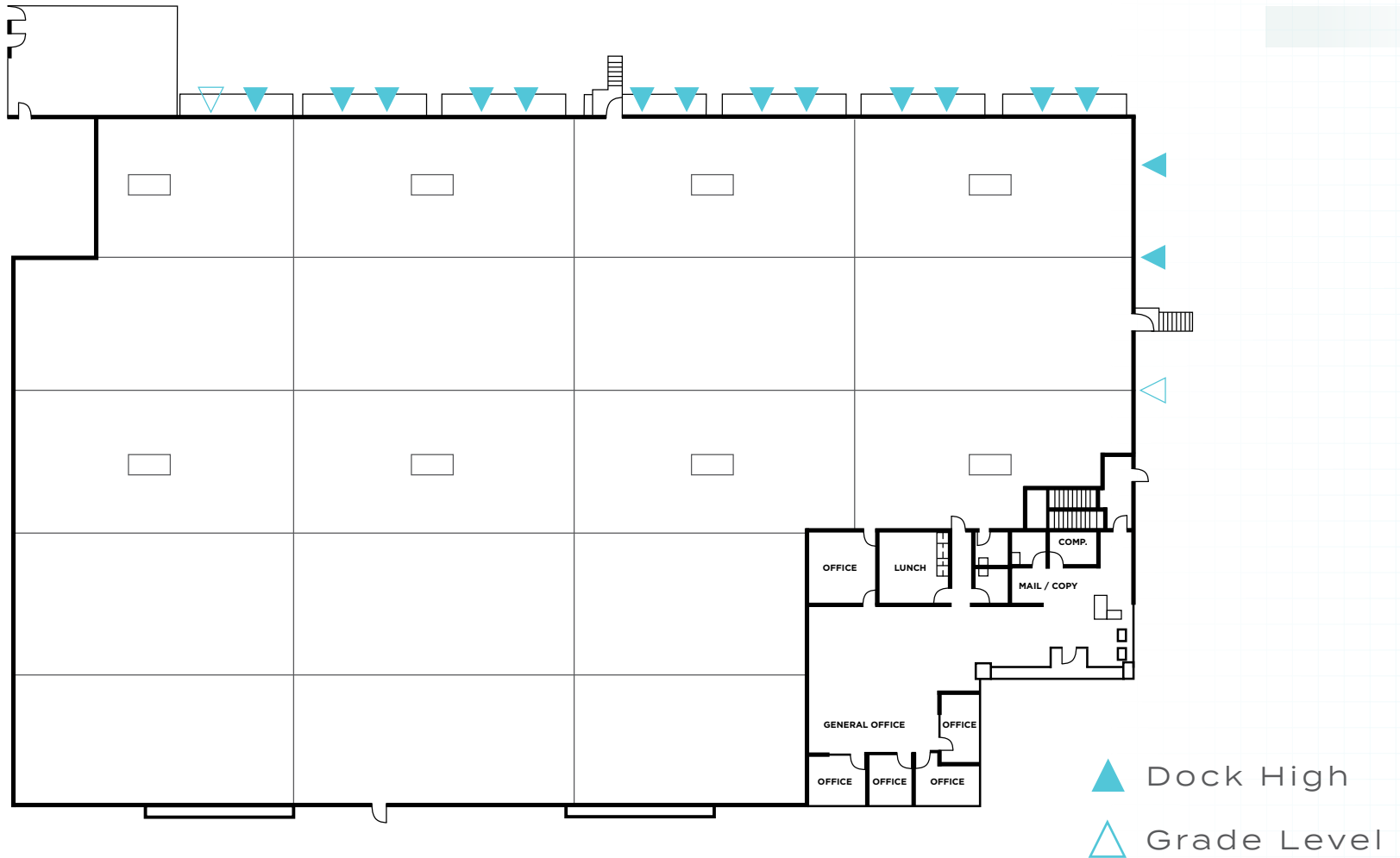


# SEAWAY

## BUSINESS PARK

1500 Industry Street | **BUILDING H** | Everett, WA

### FULL FLOOR



**AL HODGE** | (425) 646-5240 | [hodge@broderickgroup.com](mailto:hodge@broderickgroup.com)

**ERIC MEUSSNER** | (425) 274-4282 | [meussner@broderickgroup.com](mailto:meussner@broderickgroup.com)

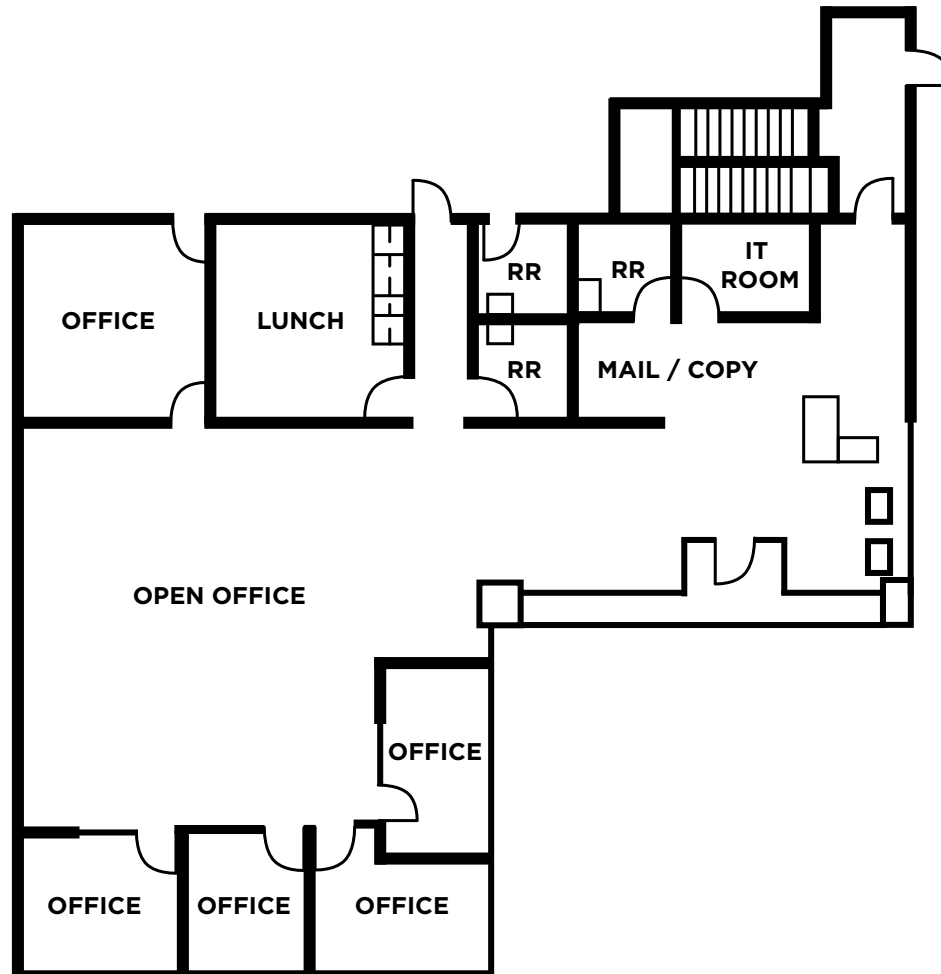
The information contained herein has been given to us by the owner or sources that we deem reliable. We have no reason to doubt its accuracy, but we do not guarantee it. Prospective tenants should carefully verify all information contained herein.

# SEAWAY

## BUSINESS PARK

1500 Industry Street | BUILDING H | Everett, WA

FIRST FLOOR  
OFFICE SPACE  
3,240 SF



AL HODGE | (425) 646-5240 | [hodge@broderickgroup.com](mailto:hodge@broderickgroup.com)

ERIC MEUSSNER | (425) 274-4282 | [meussner@broderickgroup.com](mailto:meussner@broderickgroup.com)

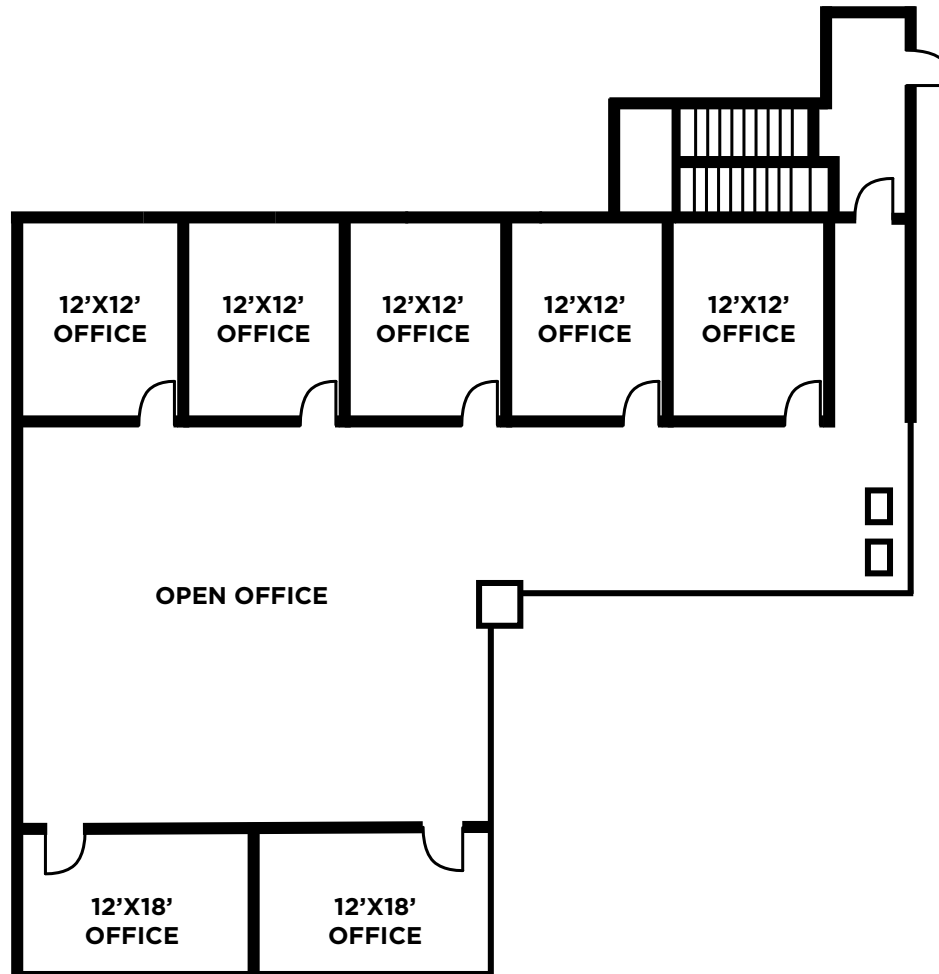
The information contained herein has been given to us by the owner or sources that we deem reliable. We have no reason to doubt its accuracy, but we do not guarantee it. Prospective tenants should carefully verify all information contained herein.

# SEAWAY

## BUSINESS PARK

1500 Industry Street | **BUILDING H** | Everett, WA

**SECOND FLOOR**  
**OFFICE SPACE**  
3,240 SF



**AL HODGE** | (425) 646-5240 | [hodge@broderickgroup.com](mailto:hodge@broderickgroup.com)

**ERIC MEUSSNER** | (425) 274-4282 | [meussner@broderickgroup.com](mailto:meussner@broderickgroup.com)

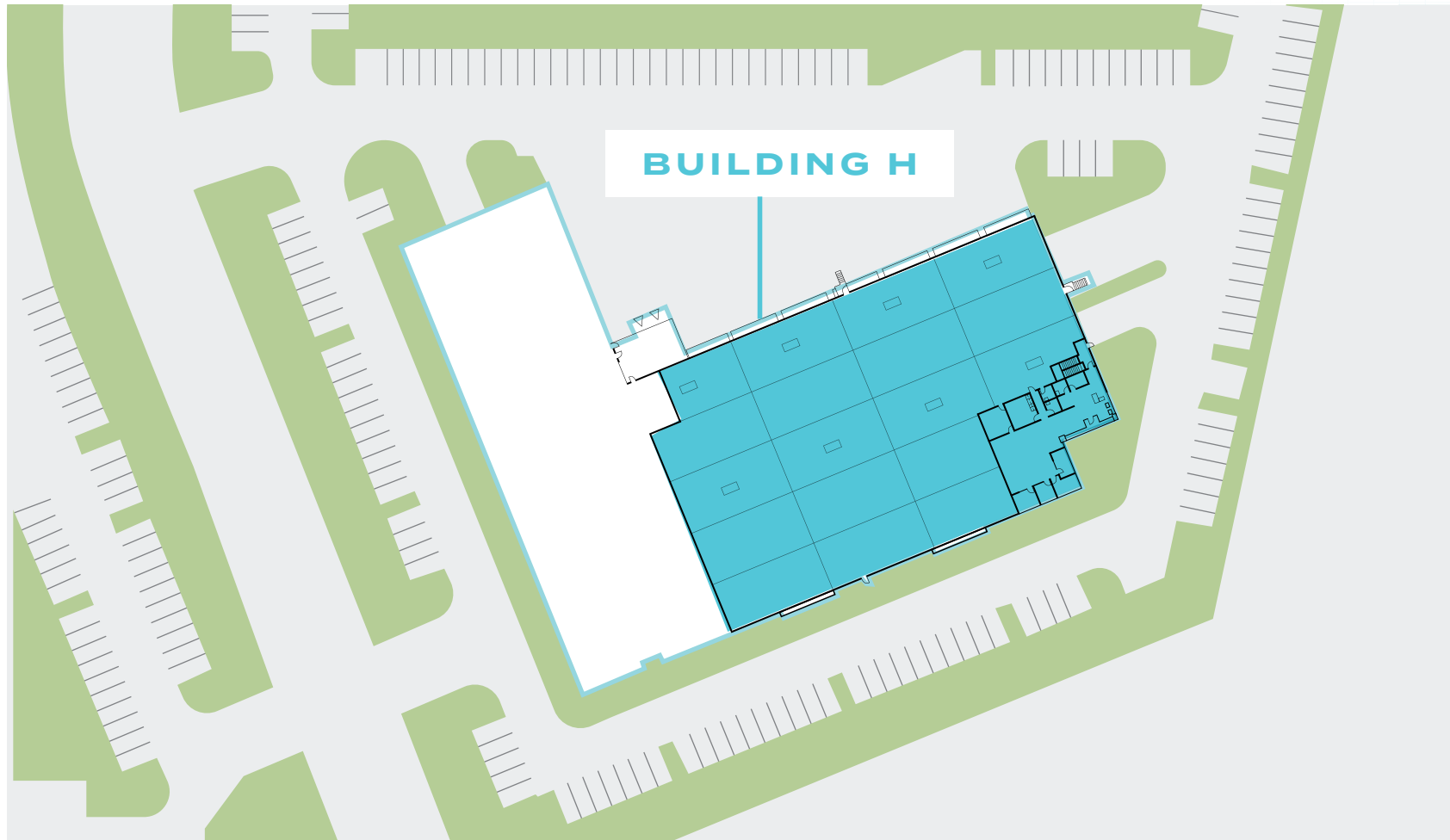
The information contained herein has been given to us by the owner or sources that we deem reliable. We have no reason to doubt its accuracy, but we do not guarantee it. Prospective tenants should carefully verify all information contained herein.

# SEAWAY

## BUSINESS PARK

1500 Industry Street | **BUILDING H** | Everett, WA

## SITE PLAN



**AL HODGE** | (425) 646-5240 | [hodge@broderickgroup.com](mailto:hodge@broderickgroup.com)

**ERIC MEUSSNER** | (425) 274-4282 | [meussner@broderickgroup.com](mailto:meussner@broderickgroup.com)

The information contained herein has been given to us by the owner or sources that we deem reliable. We have no reason to doubt its accuracy, but we do not guarantee it. Prospective tenants should carefully verify all information contained herein.