

2660

WILLAMETTE DRIVE NE

76,250 SF Industrial Lease



LISTING INFORMATION

ADDRESS:	2660 Willamette Drive NE, Lacey, WA
AVAILABLE SF:	16,925 SF - 76,250 SF
OFFICE AREA:	7,150 SF (BTS Available)
LEASE RATE:	Call for Rates
LOADING:	18 Dock High 8 Ramped
SPECIALTY LOADING:	Ability to add 20' wide loading
SPRINKLERS:	ESFR
POWER:	3,000 Amp 3-Phase, 480v
CLEAR HEIGHT:	24'
COMMENTS:	Existing Racking in Suite A: 25,475 SF

LOCATION



The information provided herein is from sources we deem reliable, however it is provided without any guarantee or representation as to its accuracy. Prospective parties should independently verify all information prior to entering into any agreements.

L&A LEE & ASSOCIATES
COMMERCIAL REAL ESTATE SERVICES

2660

WILLAMETTE DRIVE NE

76,250 SF Industrial Lease

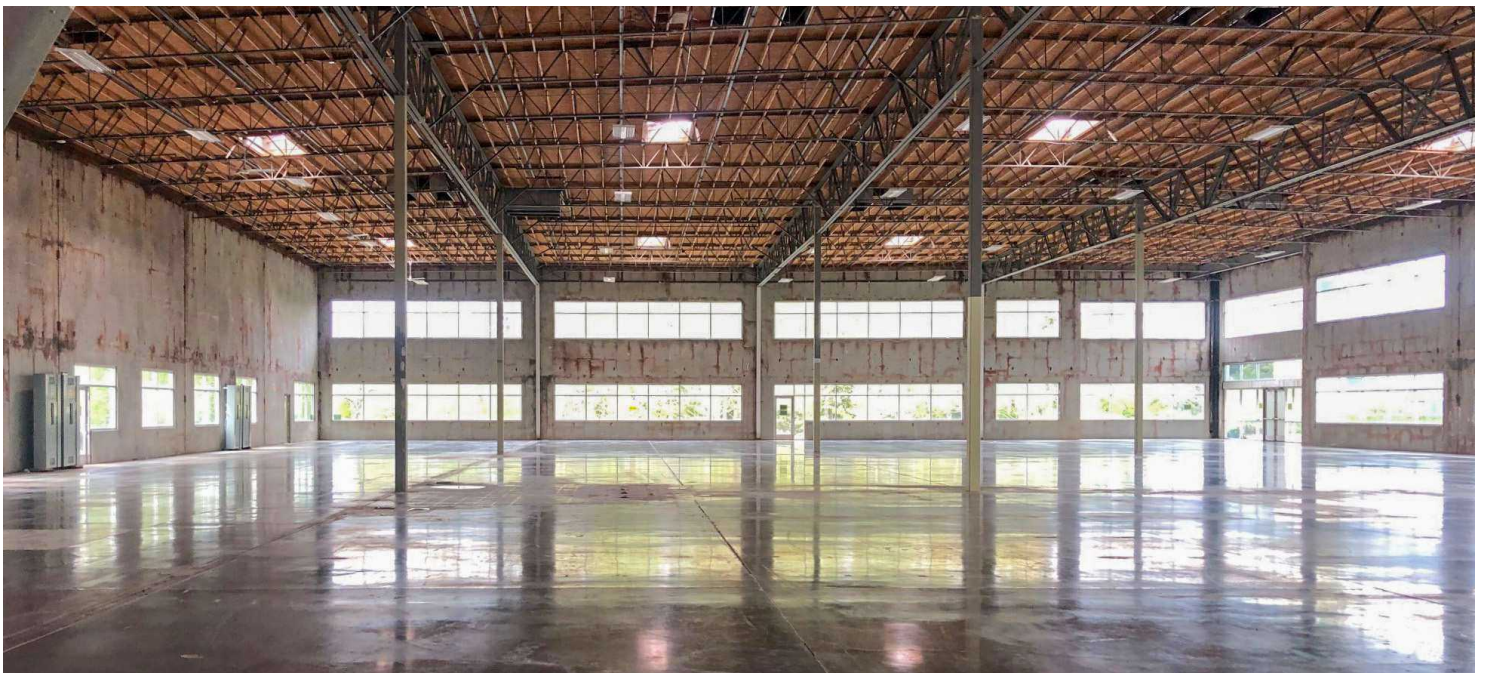
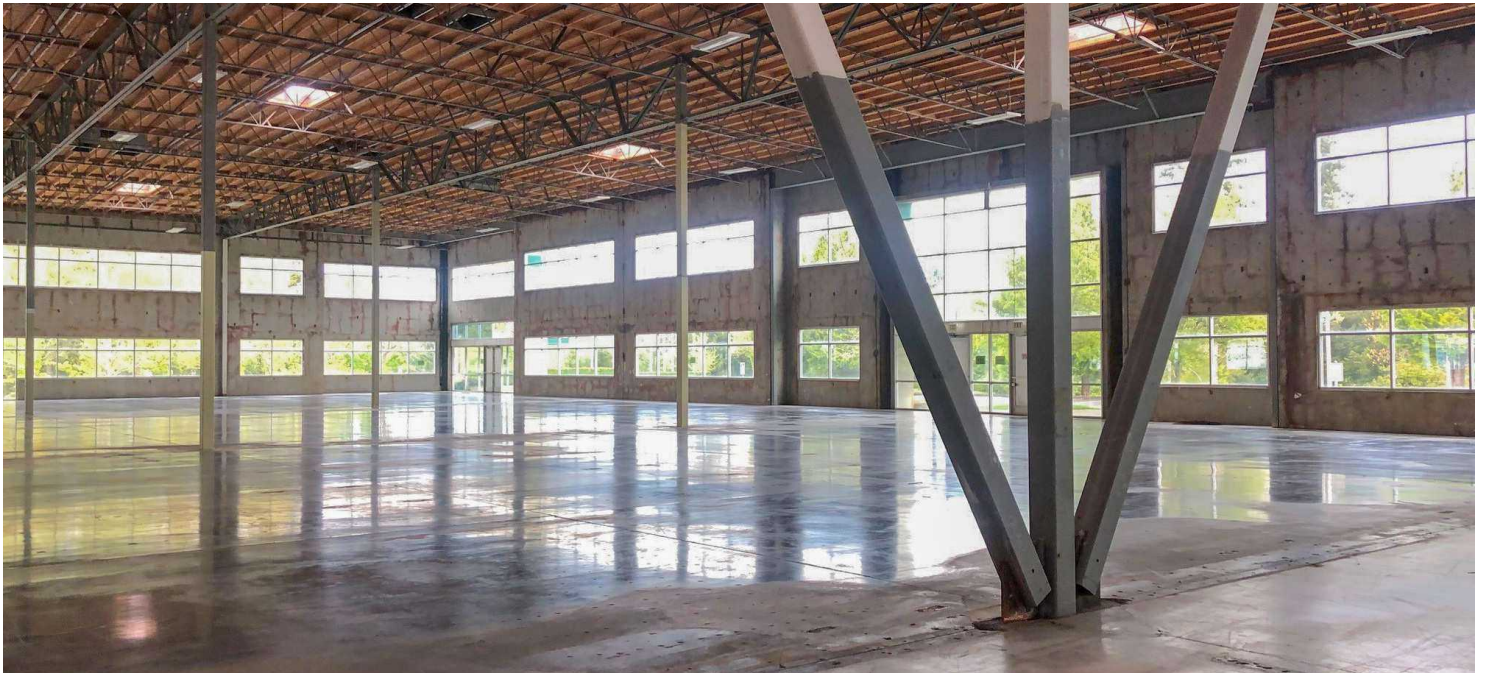


Vanessa Herzog, SIOR, CCIM
vherzog@lee-associates.com
253.444.3020

Billy Moultrie
bmoultrie@lee-associates.com
253.444.3022

Andrew Hull
ahull@lee-associates.com
253.444.3023

Justin Froelich
jfroelich@lee-associates.com
253.238.0047



2660
WILLAMETTE DRIVE NE

76,250 SF Industrial Lease

Vanessa Herzog, SIOR, CCIM
vherzog@lee-associates.com
253.444.3020

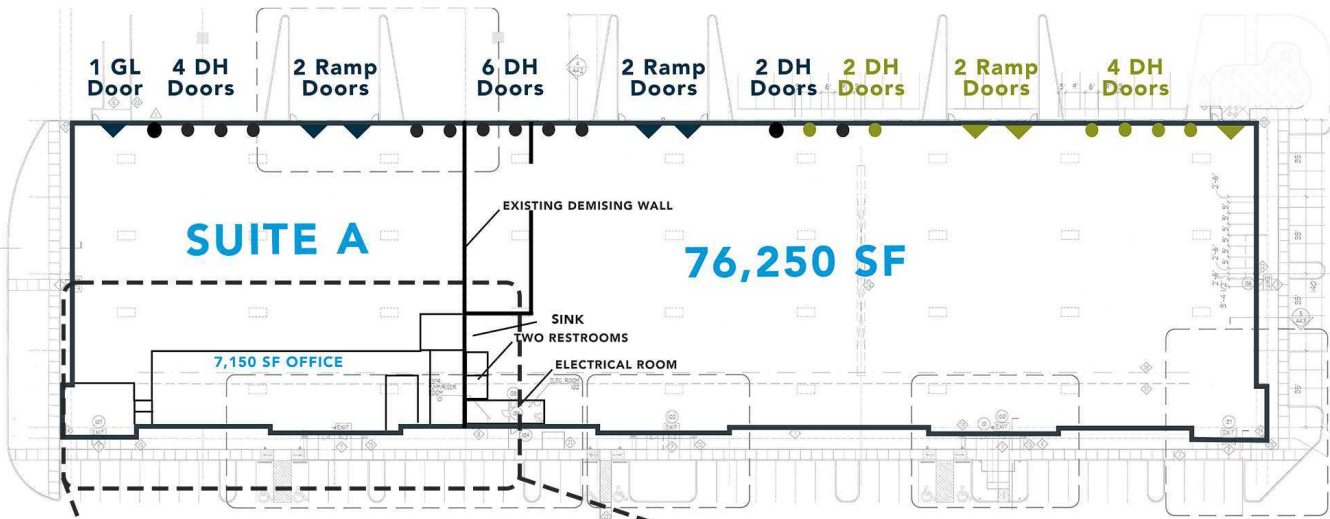
Billy Moultrie
bmoultrie@lee-associates.com
253.444.3022

Andrew Hull
ahull@lee-associates.com
253.444.3023

Justin Froelich
jfroelich@lee-associates.com
253.238.0047

OPTION 1

■ Future Loading
■ Existing Loading



2660

WILLAMETTE DRIVE NE

76,250 SF Industrial Lease

Vanessa Herzog, SIOR, CCIM
vherzog@lee-associates.com
253.444.3020

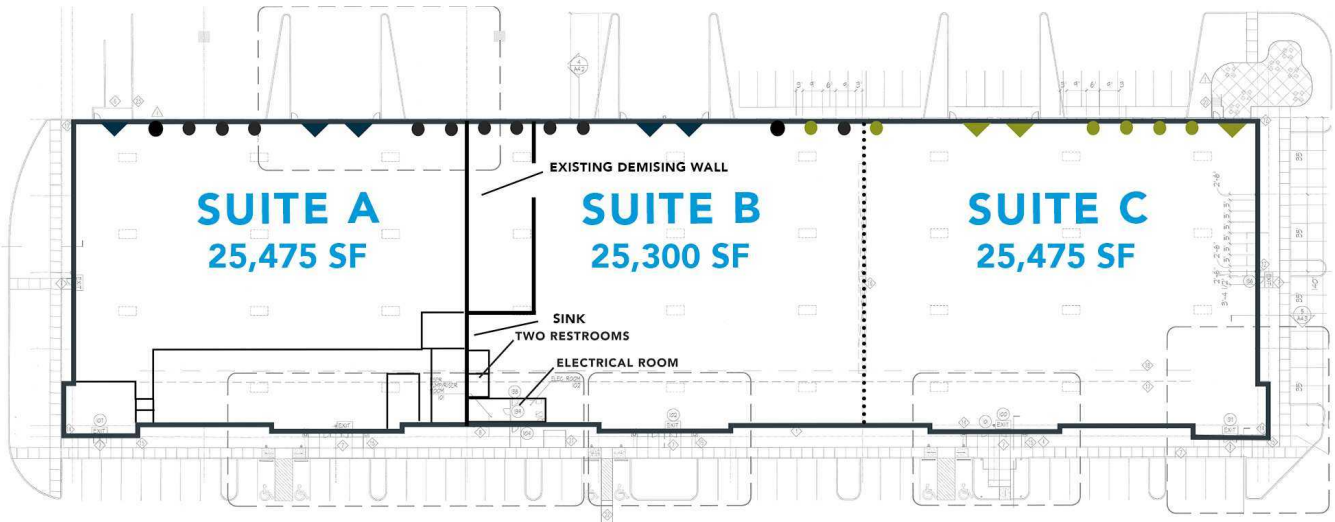
Billy Moultrie
bmoultrie@lee-associates.com
253.444.3022

Andrew Hull
ahull@lee-associates.com
253.444.3023

Justin Froelich
jfroelich@lee-associates.com
253.238.0047

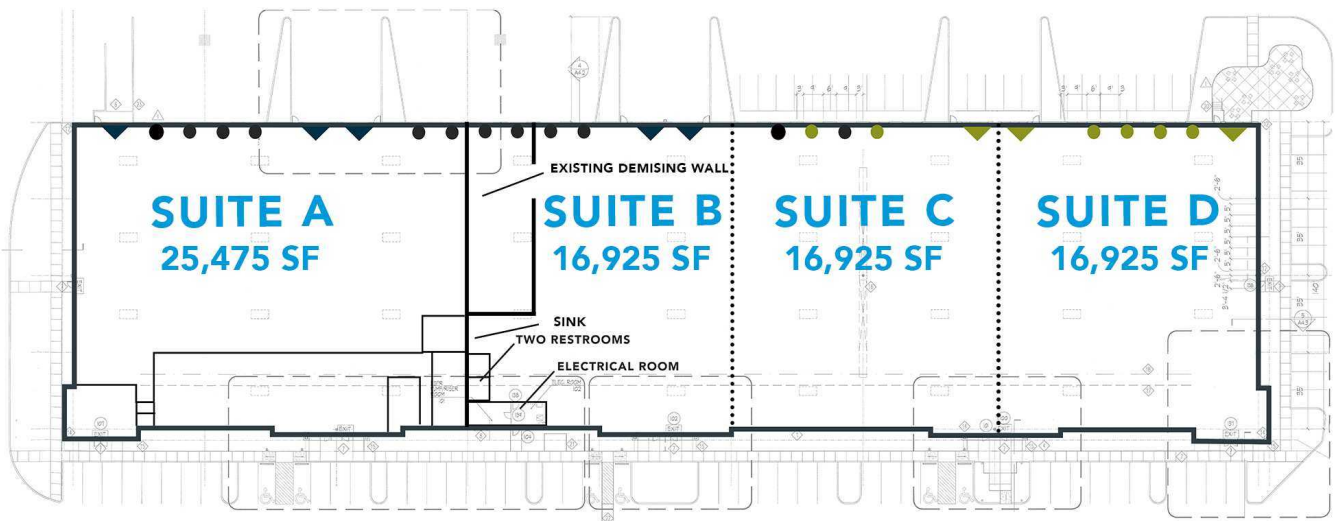
OPTION 2

■ Future Loading
■ Existing Loading



OPTION 3

■ Future Loading
■ Existing Loading



2660

WILLAMETTE DRIVE NE

76,250 SF Industrial Lease

Vanessa Herzog, SIOR, CCIM
vherzog@lee-associates.com
253.444.3020

Billy Moultrie
bmoultrie@lee-associates.com
253.444.3022

Andrew Hull
ahull@lee-associates.com
253.444.3023

Justin Froelich
jfroelich@lee-associates.com
253.238.0047

