



# 200 GOLDEN DRIVE

ZILLAH, WA 98953

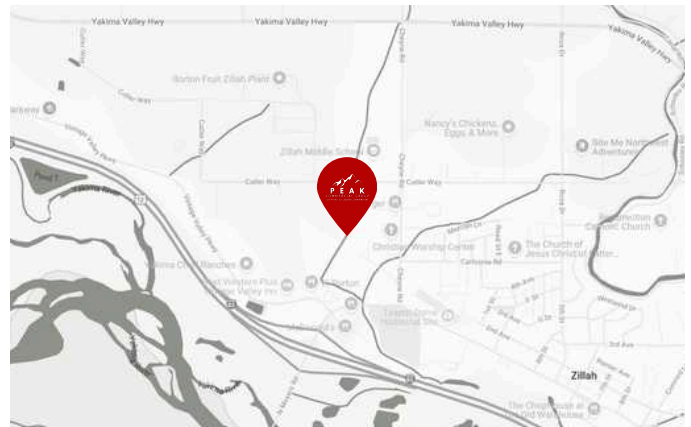
## PROPERTY SUMMARY

**\$.70/SF/YR Modified Gross Lease**  
Price

**Approx. 1 Acre Included**  
Lot Size

**Wood Frame** **5,700 SF**  
Construction Building Size

**FOR LEASE:** Approximately 5,700 SF of light industrial zoned (M-1) property located in the heart of Zillah less than a mile from I-82. The first building includes the 1000sf of nice built out office with a kitchen, large private office and HVAC. Attached to the office is 2,500 SF of heated warehouse with (2) 12' roll up doors. The second stand alone building is about 2,200 SF with one large 14' grade level door. This lease will include approximately an acre of fully fenced and secured land.





**RUSS ROBERTS, CCIM**  
Certified Commercial Broker  
rroberts@ccim.net  
+1 509 594 7989

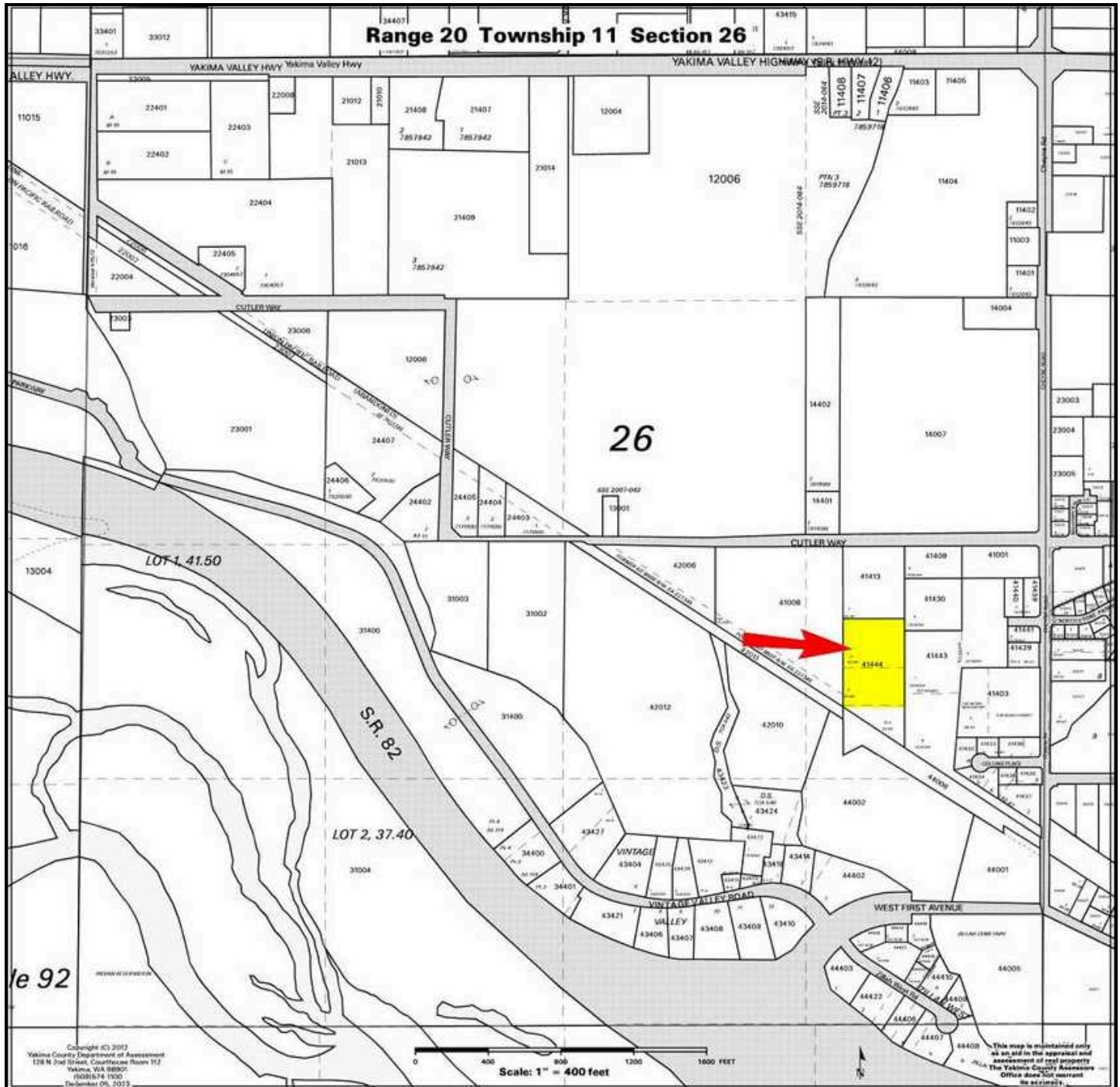
**Peak Commercial Group**  
www.russ-roberts.com





**RUSS ROBERTS, CCIM**  
Certified Commercial Broker  
rroberts@ccim.net  
+1 509 594 7989

**Peak Commercial Group**  
www.russ-roberts.com



**RUSS ROBERTS, CCIM**  
Certified Commercial Broker  
rroberts@ccim.net  
+1 509 594 7989

**Peak Commercial Group**  
www.russ-roberts.com