

# FOR LEASE

FREMONT

3516 Fremont Place North, Seattle, WA 98103

LOWER LEVEL  
SPACE



For more information please contact:

JULIE CARVALHO

[juliec@gibraltarus.com](mailto:juliec@gibraltarus.com)

206.898.1731

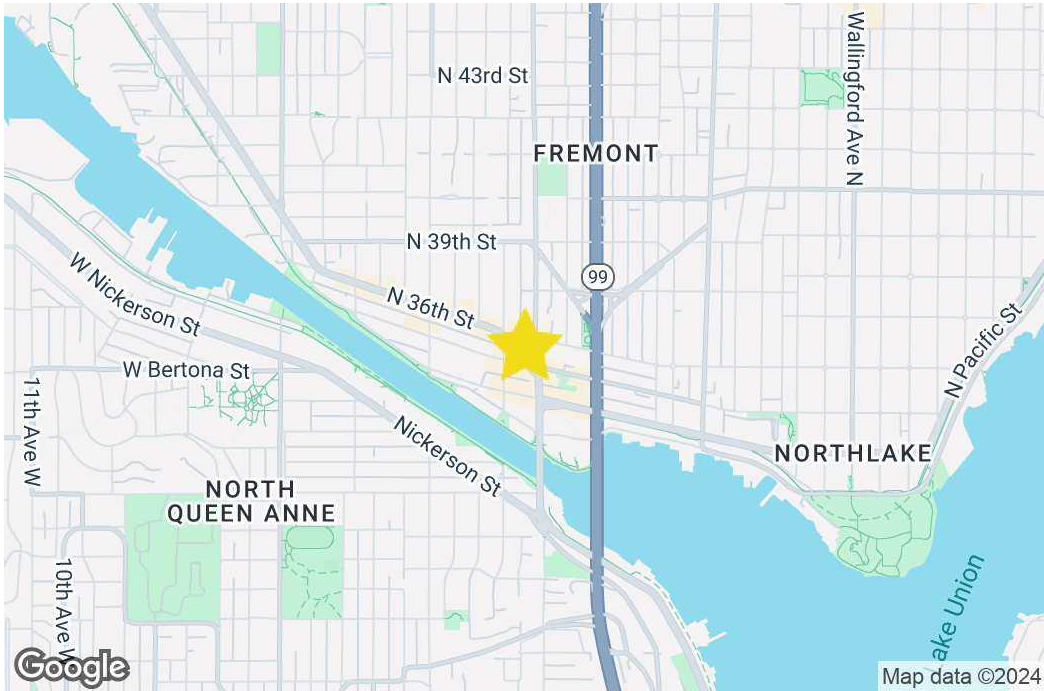
MATT BARNES

[mattb@gibraltarus.com](mailto:mattb@gibraltarus.com)

206.251.7249



# FREMONT



OFFERING SUMMARY	
LEASE RATE:	\$2,275 per month + (NNN)
2024 NNN EST:	\$1,120.00/month
	NNN include; water/sewer & garbage
	Electricity is billed back monthly, Tenant to contract direct and pay for internet & phone
AVAILABLE SF:	1,093 SF

## OVERVIEW

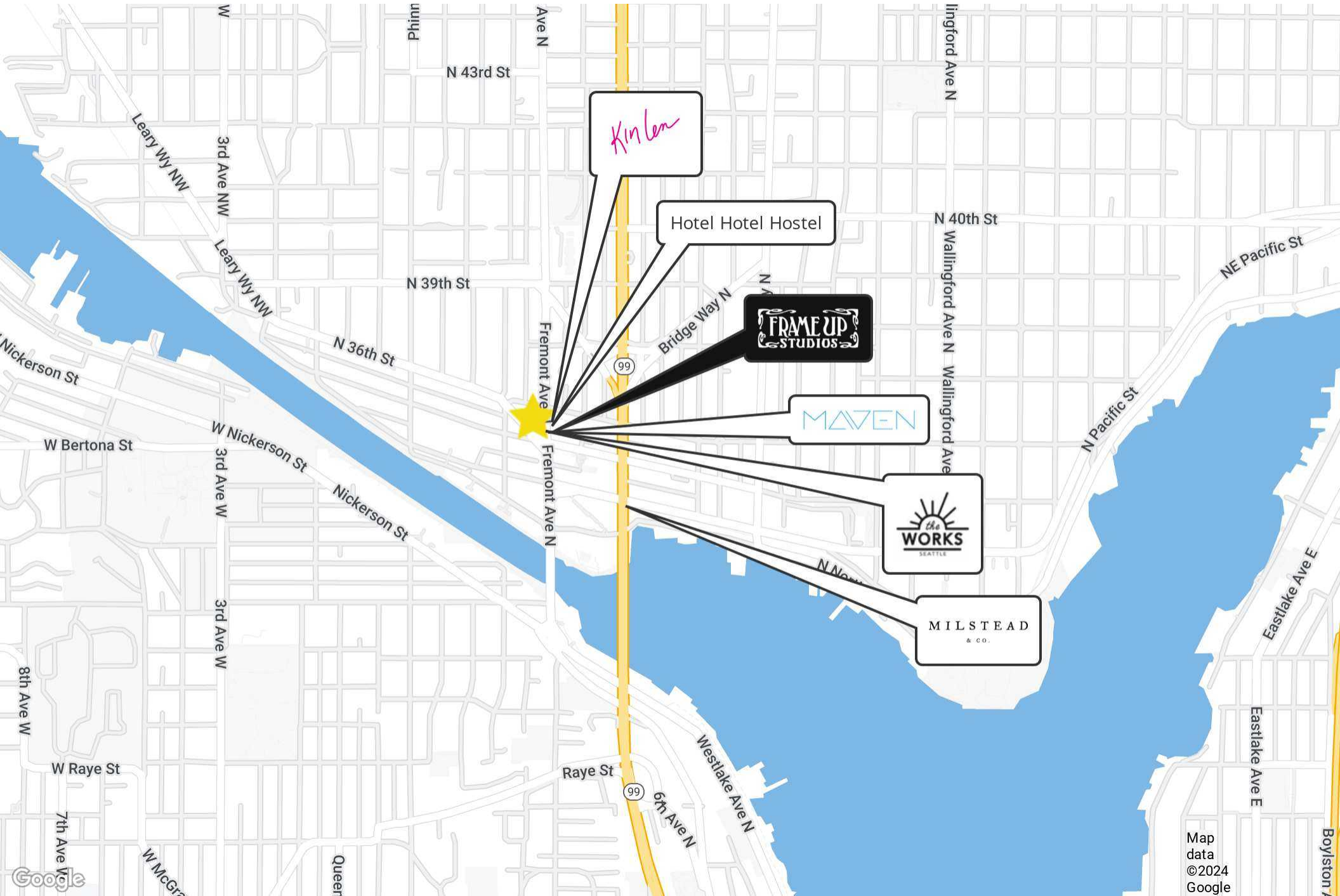
Step into a unique leasing opportunity in Fremont where creativity meets community. This distinctive location boasts a touch of eccentricity, making it an ideal canvas for your imaginative business venture. The space features three sperate rooms, a separate storage area and a back area for more storage with a utility sink.

This lower-level space has sense of community among neighboring businesses. Unleash your creativity in a setting that reflects your unique vision and make this one-of-a-kind space your own.

Other features include:

- \*Shared restroom that is professionally cleaned and maintained
- \*Shared laundry access
- \*Two shared entrances
- \*Front door access control
- \*High ceilings

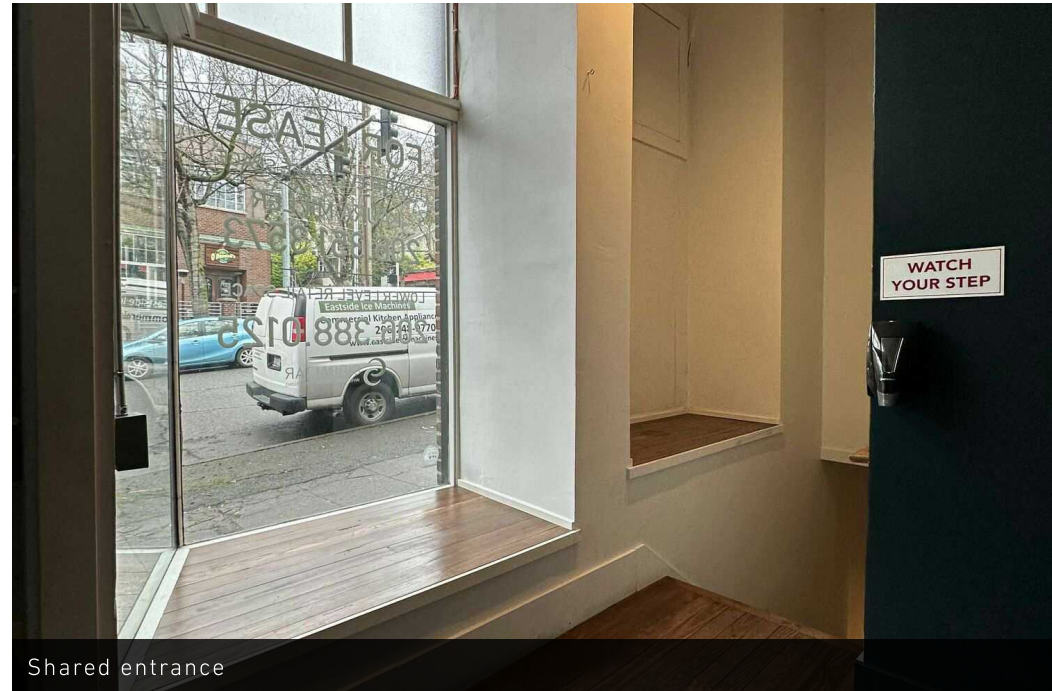
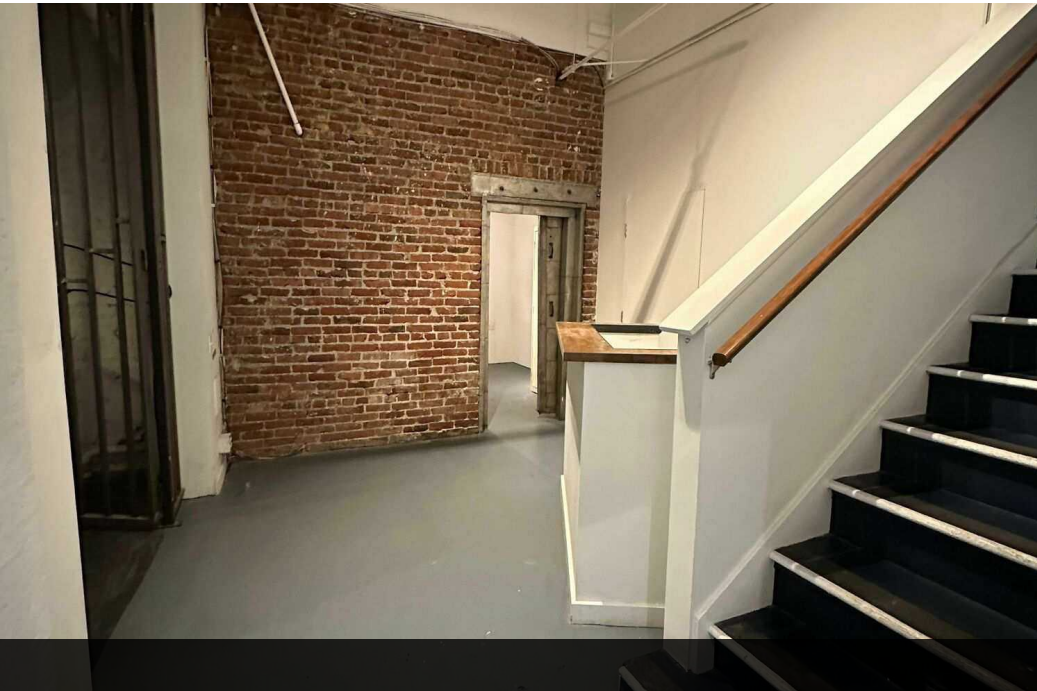
# FREMONT





3516 FREMONT PLACE NORTH, SEATTLE, WA 98103

# FREMONT



Shared entrance



Room 1

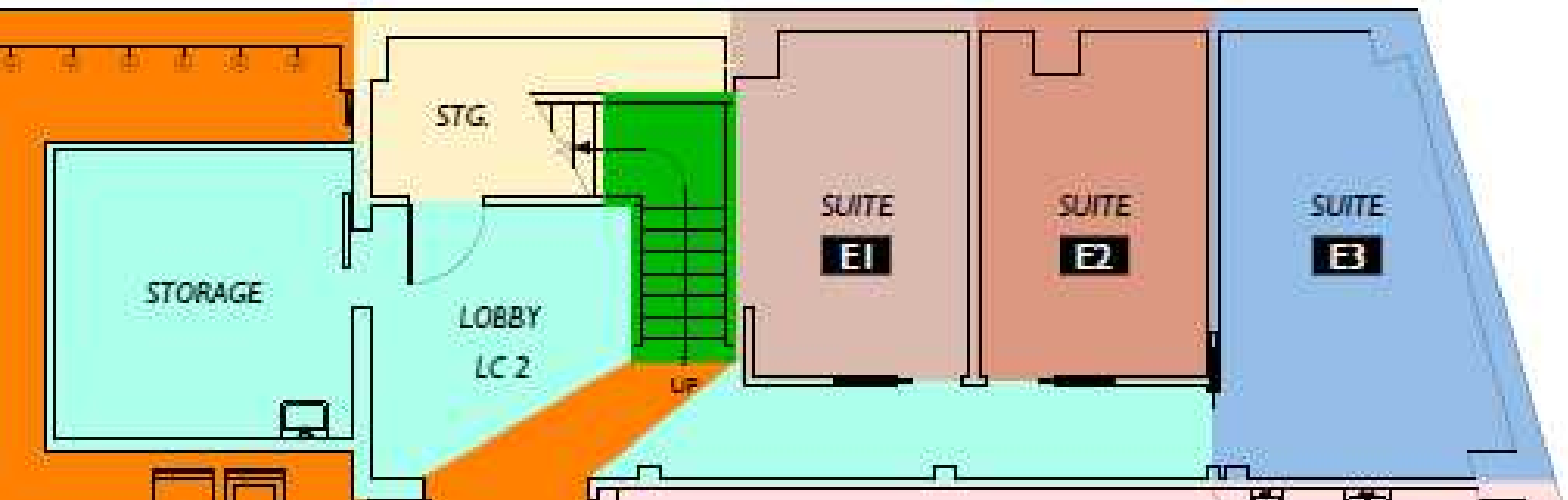


Room 2



Room 3

# FLOOR PLAN



For more information please contact:

JULIE CARVALHO  
juliec@gibraltarusa.com  
206.898.1731

MATT BARNES  
mattb@gibraltarusa.com  
206.251.7249



720 SENECA ST - SUITE B - SEATTLE, WA 98101