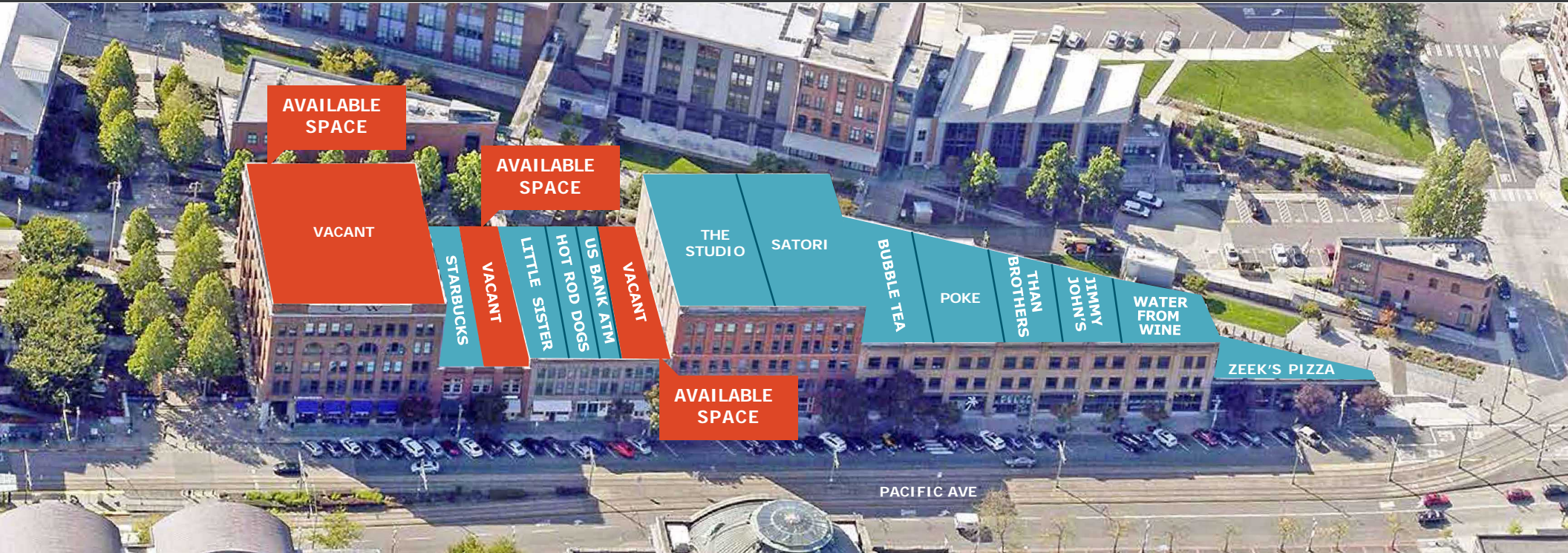


University of Washington Tacoma

1746 PACIFIC AVE, TACOMA, WA

FOR LEASE



1,528 SF to 3,550 SF available within the University of Washington Tacoma Campus



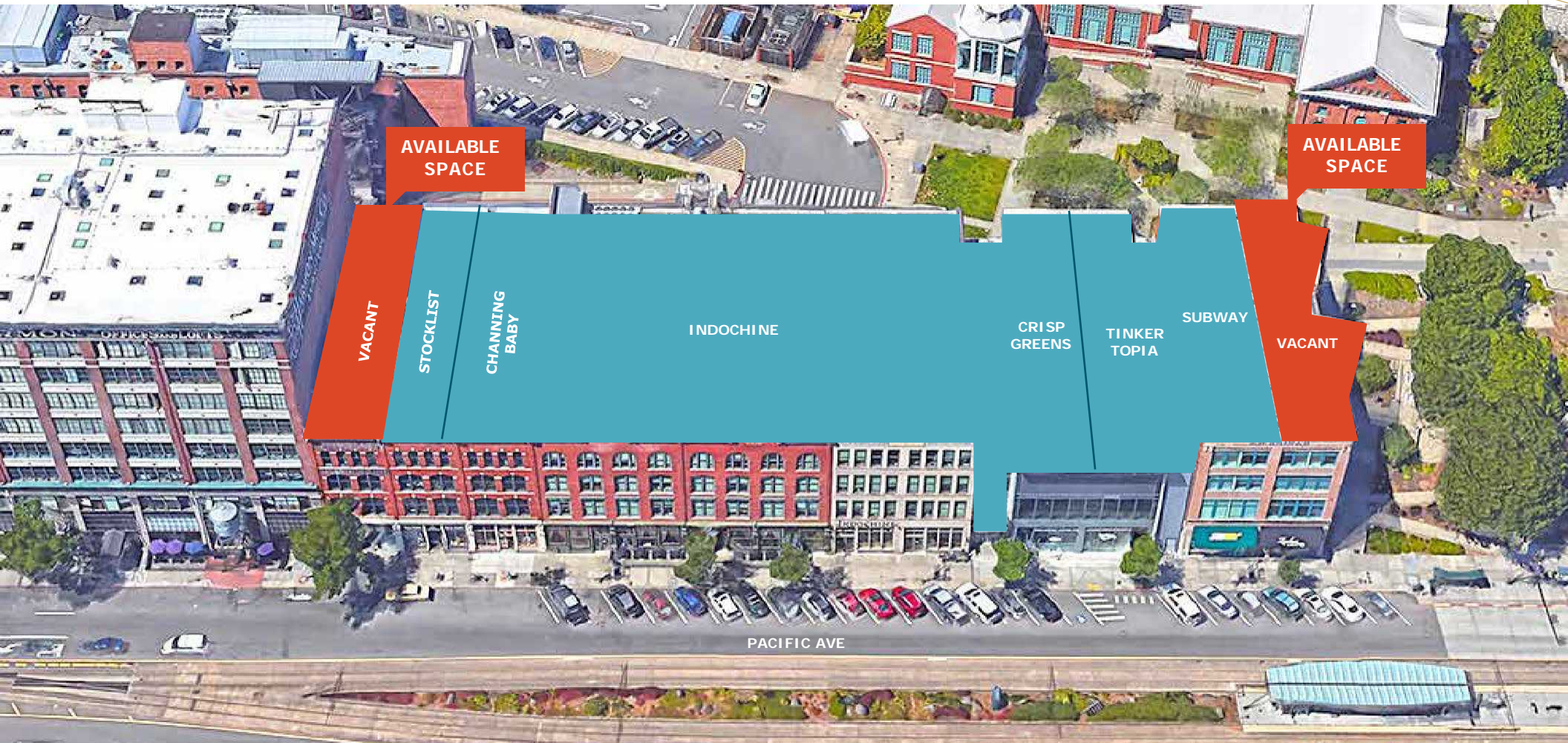
JEFF KRAFT
206.383.9973
jeff@westcomproperties.com

This information supplied herein is from sources we deem reliable. It is provided without any representation, warranty, or guarantee, expressed or implied as to its accuracy. Prospective Buyer or Tenant should conduct an independent investigation and verification of all matters deemed to be material, including, but not limited to, statements of income and expenses. Consult your attorney, accountant, or other professional advisor.

FOR LEASE

University of Washington Tacoma

1746 PACIFIC AVE, TACOMA, WA



1,525 SF and 2,234 SF available

This information supplied herein is from sources we deem reliable. It is provided without any representation, warranty, or guarantee, expressed or implied as to its accuracy. Prospective Buyer or Tenant should conduct an independent investigation and verification of all matters deemed to be material, including, but not limited to, statements of income and expenses. Consult your attorney, accountant, or other professional advisor.

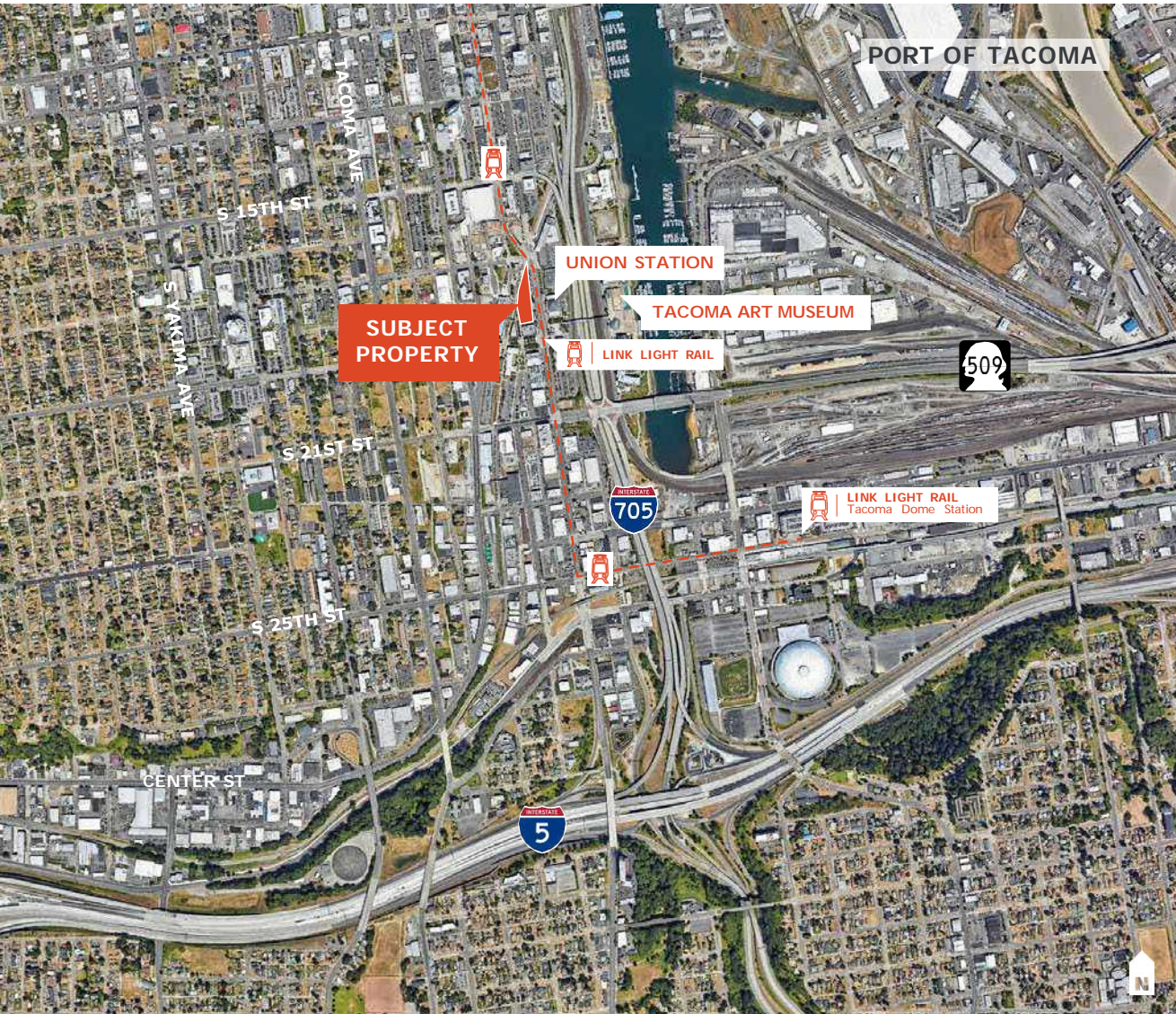
Jeff Kraft
206.383.9973
jeff@westcomproperties.com

WestCom
PROPERTIES, INC

FOR LEASE

University of Washington Tacoma

1746 PACIFIC AVE, TACOMA, WA



3,550 SF available

1,545 SF available

1,528 SF available

1,660 SF available

2,234 SF available

DENSE pedestrian and destination retail area

ACROSS from the Link Light Rail hub, Tacoma Art Museum, and Union Station

AMPLE street parking

RATE \$22.00 PSF, NNN

DEMOGRAPHICS

	1 Mile	3 Miles	5 Miles
Population	18,344	105,178	265,625
Median HH Income	\$53,404	\$67,221	\$72,588
Total Businesses	2,165	6,446	12,244
Total Employees	23,564	66,741	113,215

This information supplied herein is from sources we deem reliable. It is provided without any representation, warranty, or guarantee, expressed or implied as to its accuracy. Prospective Buyer or Tenant should conduct an independent investigation and verification of all matters deemed to be material, including, but not limited to, statements of income and expenses. Consult your attorney, accountant, or other professional advisor.

Jeff Kraft
206.383.9973
jeff@westcomproperties.com

WestCom
PROPERTIES, INC