

# WESTPARK

BUSINESS PARK



## UNMATCHED CAMPUS SETTING

782,185 SF of office, flex and industrial space  
adjacent to downtown Redmond

[WESTPARKREDMOND.COM](http://WESTPARKREDMOND.COM)



EXCLUSIVELY  
REPRESENTED BY



# Westpark is more than a business park, it's a destination for work and play.

Discover a vibrant campus environment perfectly integrated into its park-like setting, offering tenants collaborative meeting areas and new state-of-the-art onsite amenities.



TENANT SPACE

3

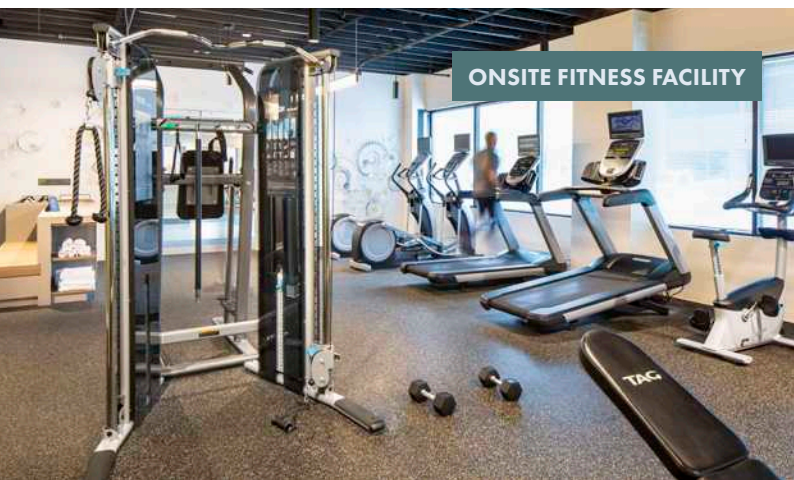
Total business parks including Westpark, Redmond Centercourt + PBTC

21

Total buildings including office, flex, and industrial, providing best-in-class versatility



OUTDOOR PAVILION



ONSITE FITNESS FACILITY

782,185

Total RSF





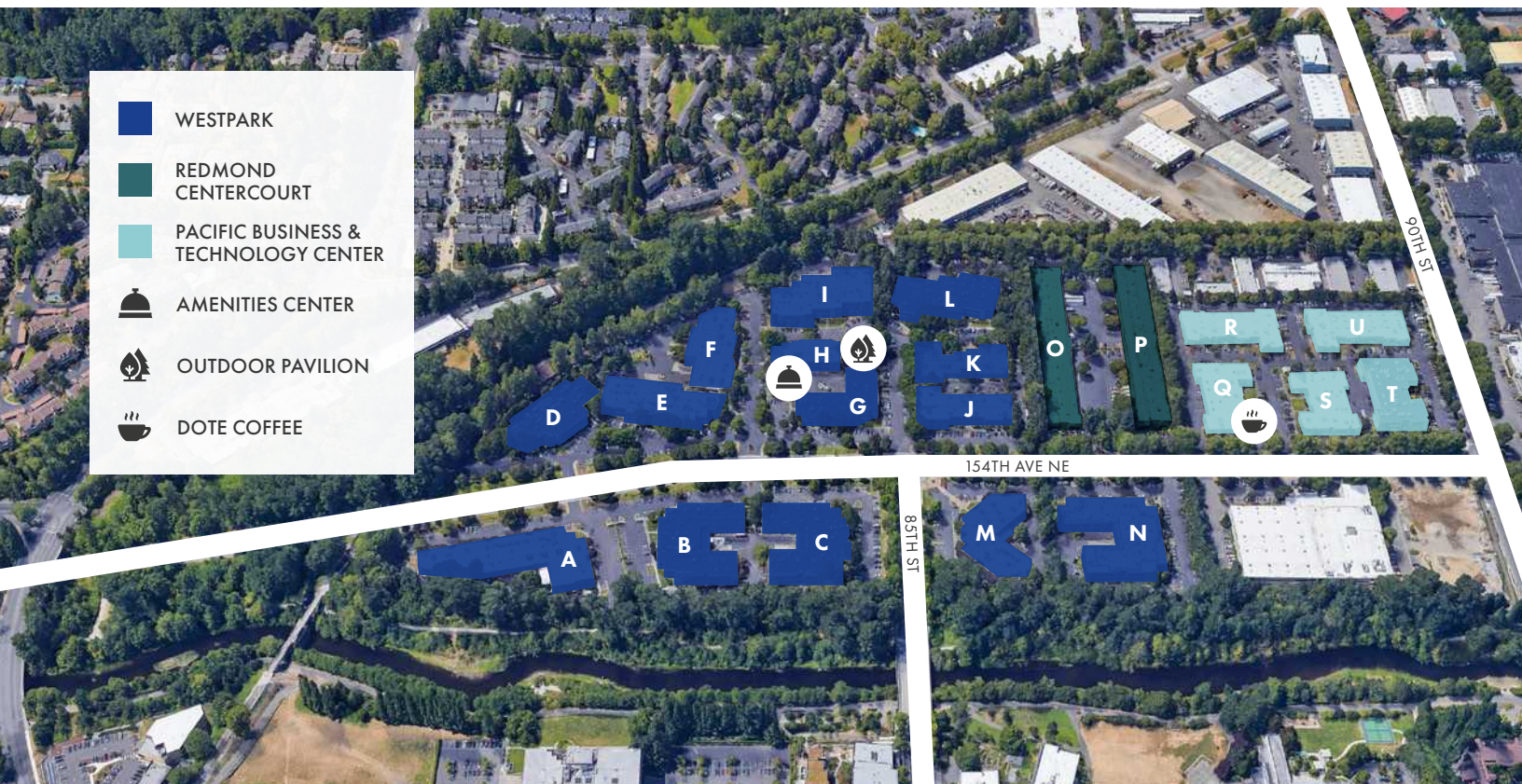
**BUILDING H AMENITIES BUILDING**

## Building Amenities

- New Amenities Center on-site (Building H)
- Fully furnished plug & play shared executive office space, conference facility, fitness facility, cafe and shuffleboard
- Outdoor basketball area and access to the Sammamish trail
- Brand new Dote Coffee featuring small batch coffee, in-house pastries, and chocolate
- New outdoor pavilion with gas fire pit and covered seating

## Location

- Easy access to SR-520 and I-405
- Located adjacent to major bus lines, with quick access to downtown Redmond, Bellevue, and Microsoft World Headquarters
- Prominently situated near numerous retail amenities and services, including Redmond Town Center and downtown Redmond
- EV charging stations located throughout park



- WESTPARK
- REDMOND CENTERCOURT
- PACIFIC BUSINESS & TECHNOLOGY CENTER
- 🔔 AMENITIES CENTER
- 🔥 OUTDOOR PAVILION
- ☕ DOTE COFFEE

154TH AVE NE

90TH ST

85TH ST

# Availabilities

## PURE OFFICE SPACE

Bldg / Suite	Floor Plan	Size	Comments
R / Suite 160	<a href="#">View floor plan</a>	1,135 SF	Small office space, 2 private offices, conference/kitchen and internal restrooms.
J / Suite 260	<a href="#">View floor plan</a>	2,660 SF	Outstanding move-in ready space, 6 private offices, conference room and open area.
L / Suite 210	<a href="#">View floor plan</a>	4,033 SF	2nd floor office on extensive window line. Available 10/1/24.
T / Suite 200	<a href="#">View floor plan</a>	8,838 SF	2nd floor office on extensive window line, includes small 594 SF warehouse for storage with grade-level loading.

## FLEX SPACE

K / Suite 110	<a href="#">View floor plan</a>	3,523 SF total 3,171 SF office 352 SF warehouse	6 private offices on 3 sides of windows, conference, kitchen, server, and small warehouse with grade-level loading.
C / Suite 120	<a href="#">View floor plan</a>	7,608 SF total 6,186 SF office 1,422 SF warehouse	Landlord completing market-ready work to include 6 perimeter private offices, kitchen, conference room and open area. Small flex/assembly area with grade- and dock-level loading.
P / Suite 110	<a href="#">View floor plan</a>	8,784 SF total 2,462 SF office 6,322 SF warehouse	24' clear, 4 dock doors, office with 3 private offices, conference, kitchen, and open area.
G / Suite 110/120	<a href="#">View floor plan</a>	13,267 SF total 7,125 SF office 6,142 SF warehouse	High-end finishes, with furniture available. 24' clear, grade-level loading, move-in ready condition.
A / Suites 100 + 230	<a href="#">View floor plan</a>	31,372 SF total 16,072 SF office 15,300 SF warehouse	Rare production, R&D and warehousing space. Dock- and grade-level loading, 24' clear height, heavy power, flexible layout. Available 8/1/24.

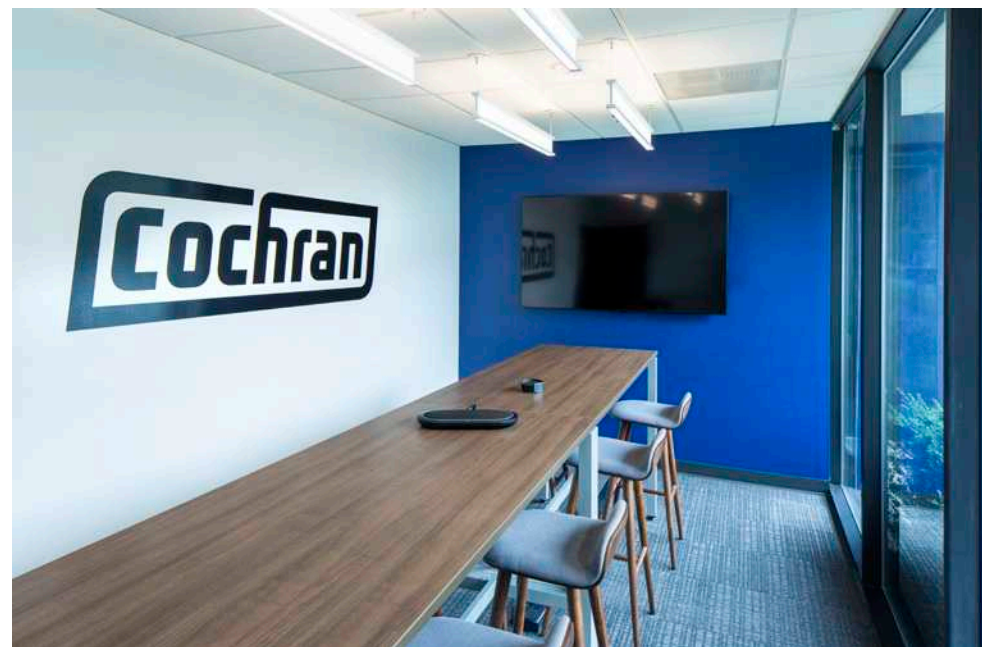
## SHARED EXECUTIVE SPACE

H / Suites 203 - 209	<a href="#">View floor plan</a>	2-6 person offices	Brand new, fully-furnished shared office space with flexible lease terms and fully serviced rates (including utilities). Access to small and large conference rooms, fitness facility with showers and towel service, and food service. Wi-Fi and phones hooked up allowing for immediate occupancy.
----------------------	---------------------------------	--------------------	--

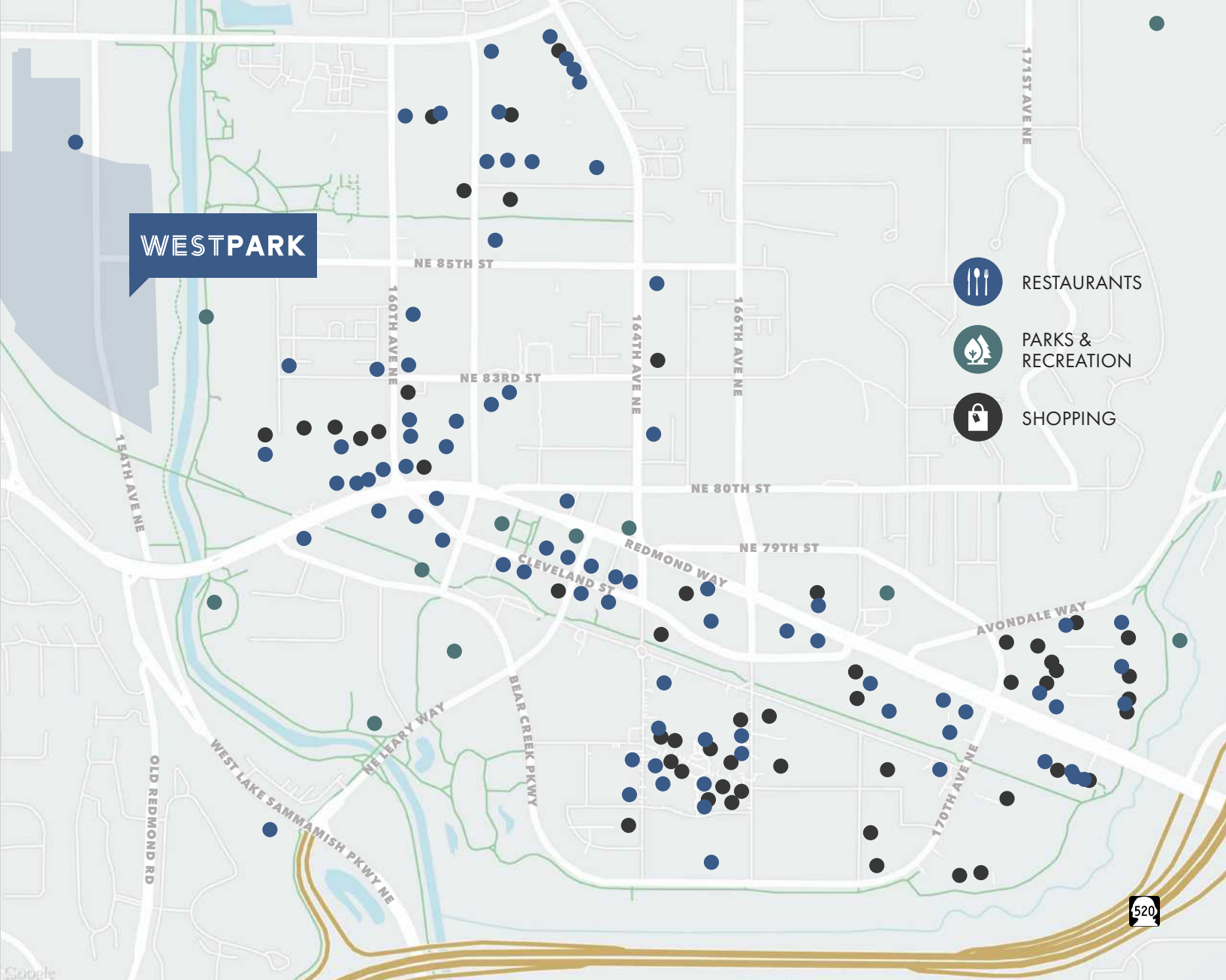




**Unique work environment with an abundance of amenities**







# WESTPARK

BUSINESS PARK

8410 154TH AVE NE | REDMOND, WA

[WESTPARKREDMOND.COM](http://WESTPARKREDMOND.COM)

**FOR LEASING INFORMATION, CONTACT**

**MARK FLIPPO**  
 JLL  
 425.974.4007  
[mark.flippo@am.jll.com](mailto:mark.flippo@am.jll.com)

**JASON BLOOM**  
 Kidder Mathews  
 425.450.1102  
[jason.bloom@kidder.com](mailto:jason.bloom@kidder.com)



This information supplied herein is from sources we deem reliable. It is provided without any representation, warranty or guarantee, expressed or implied as to its accuracy. Prospective Buyer or Tenant should conduct an independent investigation and verification of all matters deemed to be material, including, but not limited to, statements of income and expenses. Consult your attorney, accountant, or other professional advisor.

