

14,080 SF

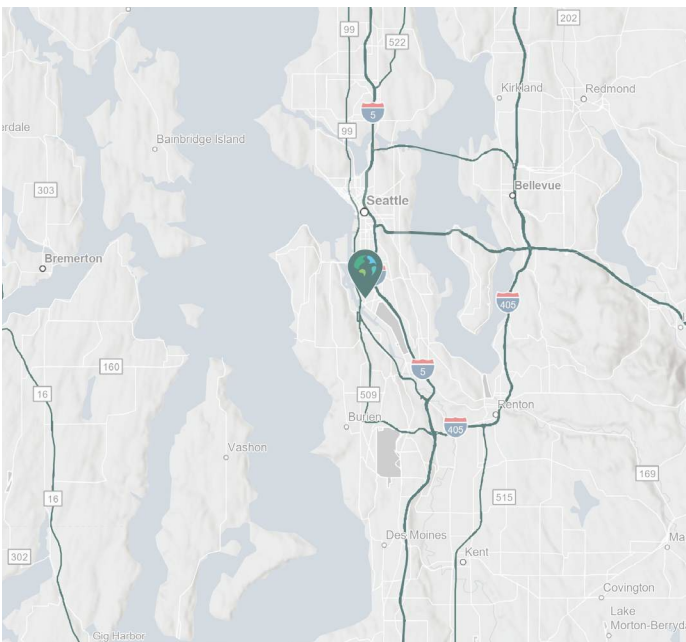
Industrial Space For Lease



Prologis Park Seattle 18



5979 4th Ave S
Seattle, WA 98108 USA



LOCATION

- Excellent location; Minutes to Downtown Seattle & Port of Seattle.
- Quick access to I-5, Highway 99 & I-90.

FACILITY

- ± 14,080 SF
- ± 3,200 SF office space
- 3 dock doors
- 1 drive-in door
- 16 parking stalls
- Available Now
- Extensive remodel recently completed
- Upgrading power to 600 amps, 277/480v

ADVANTAGES & AMENITIES

- Premiere street visibility along 4th Ave. South

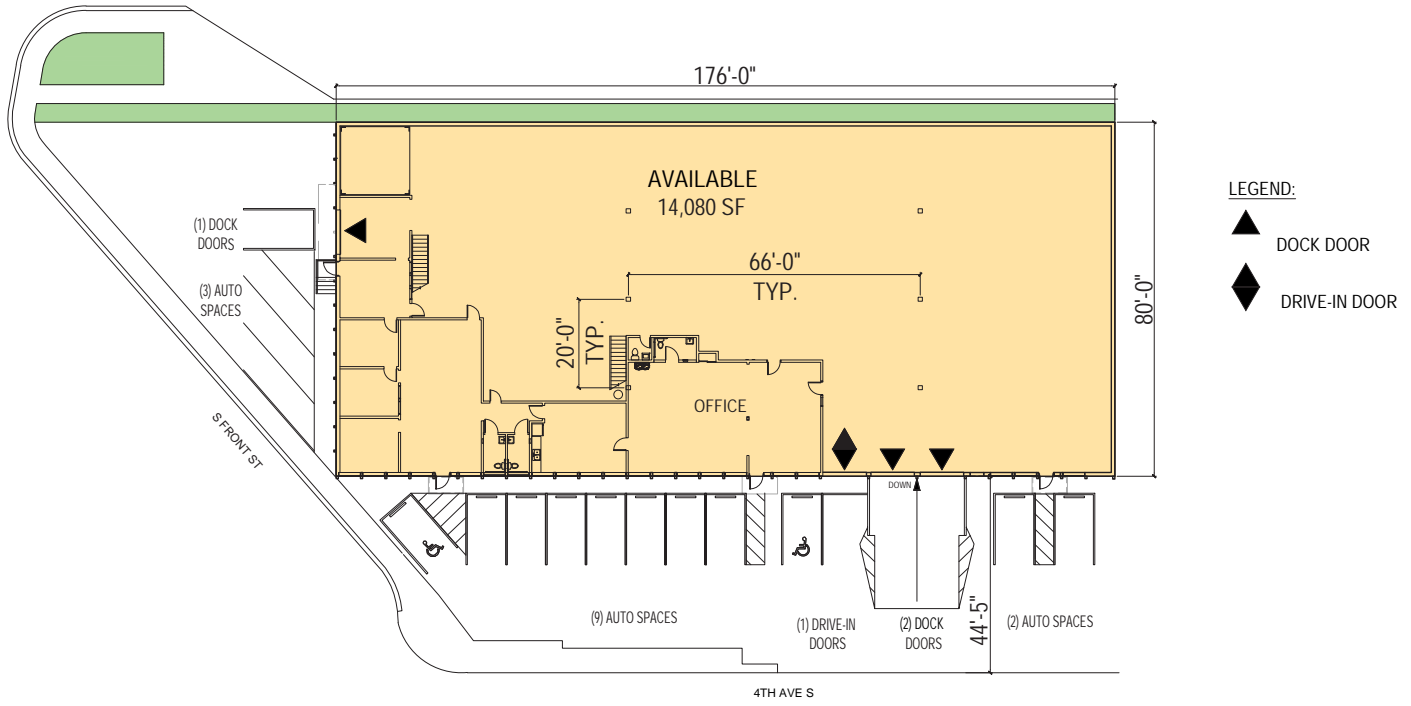
Prologis Essentials: your single-source service for efficient move-in and operations at [prologisessentials](https://www.prologisessentials.com).

14,080 SF

Industrial Space For Lease

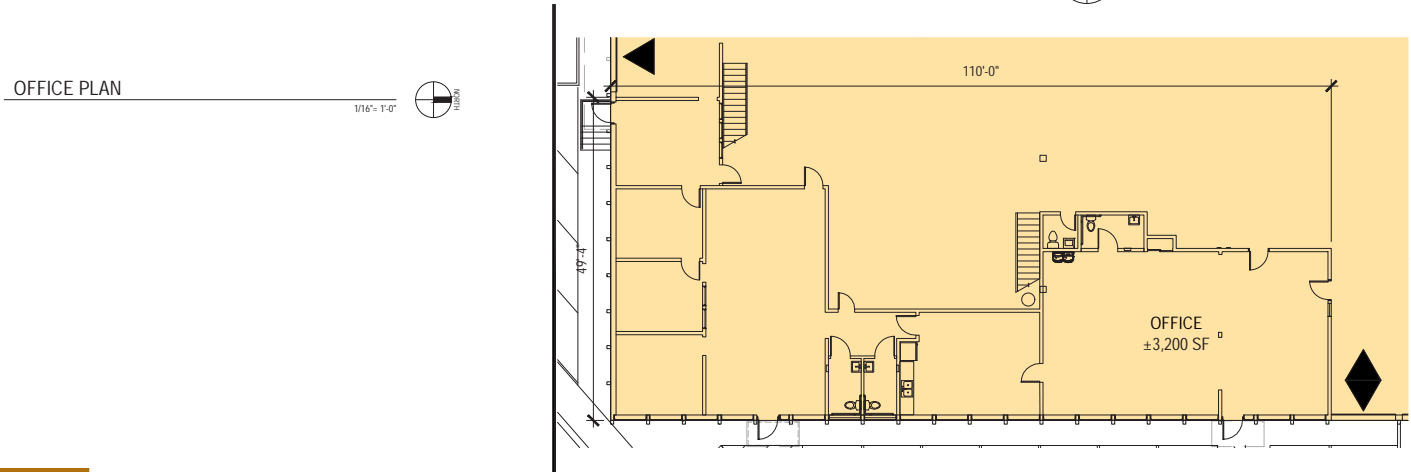


Prologis Park Seattle 18



OVERALL PLAN

1/32" = 1'-0"



OFFICE PLAN

1/16" = 1'-0"



WA-REA
Wilma Warshak
wilma.warshak@wa-rea.com
cell +1 206 409 1432
office +1 206 838 5492
2371 Eastlake Ave. E., Suite 200
Seattle, WA 98102 USA

WA-REA
Alana Garrett
alana.garrett@wa-rea.com
cell +1 858 722 5627
office +1 206 838 5492
2371 Eastlake Ave. E., Suite 200
Seattle, WA 98102 USA

WA-REA
Jackson Peterson
jackson.peterson@wa-rea.com
cell +1 503 739 1830
office +1 206 838 5492
2371 Eastlake Ave. E., Suite 200
Seattle, WA 98102 USA

Prologis
Richard Kolpa
RKolpa@prologis.com
ph +1 206 414 7610
cell +1 206 949 5681
5900 Airport Way. S.
Seattle, WA 98108 USA

Prologis Essentials: your single-source service for efficient move-in and operations at prologisessentials.

No warranty or representation, expressed or implied, is made as to the accuracy of the information contained herein, and same is submitted subject to error and omissions.

14,080 SF

Industrial Space For Lease



Prologis Park Seattle 18

RECENTLY COMPLETED RENOVATIONS



WA-REA
Wilma Warshak
wilma.warshak@wa-rea.com
cell +1 206 409 1432
office +1 206 838 5492
2371 Eastlake Ave. E., Suite 200
Seattle, WA 98102 USA

WA-REA
Alana Garrett
alana.garrett@wa-rea.com
cell +1 858 722 5627
office +1 206 838 5492
2371 Eastlake Ave. E., Suite 200
Seattle, WA 98102 USA

WA-REA
Jackson Peterson
jackson.peterson@wa-rea.com
cell +1 503 739 1830
office +1 206 838 5492
2371 Eastlake Ave. E., Suite 200
Seattle, WA 98102 USA

Prologis
Richard Kolpa
RKolpa@prologis.com
ph +1 206 414 7610
cell +1 206 949 5681
5900 Airport Way. S.
Seattle, WA 98108 USA

Prologis Essentials: your single-source service for efficient move-in and operations at prologisessentials.

No warranty or representation, expressed or implied, is made as to the accuracy of the information contained herein, and same is submitted subject to error and omissions.