

FRASER COURT | 503 SF

FOR LEASE



NE 85TH STREET



THE
REMLINGER
GROUP

16275 NE 85TH STREET
REDMOND, WA

This document has been prepared by The Remlinger Group for advertising and general information only. The information contained herein has been obtained from reliable sources. However, any prospective buyer or tenant should verify all information relating to this property and contained herein.

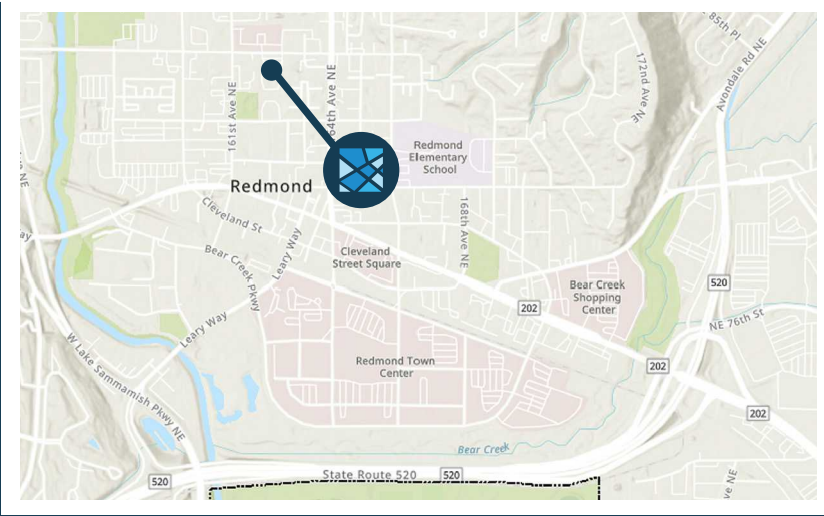
www.RemlingerGroup.com

Property Overview



PROFESSIONAL OFFICE SPACE AVAILABLE

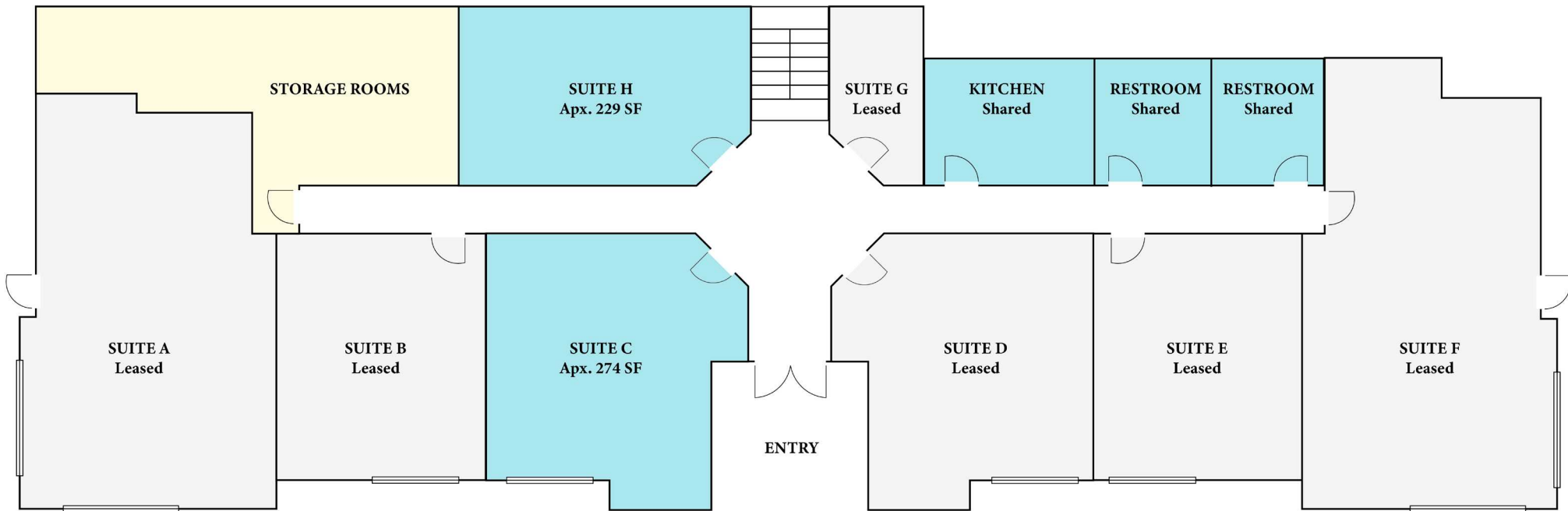
Address:	16275 NE 85th Street, Redmond, WA
Suites:	C & H 503 Square Feet
Monthly Rent:	\$1,760.50/Month + NNN
Available:	Immediately
Highlights:	Secured FOB Entry, Shared Kitchen, Restrooms, Pvt. Parking, Storage Rooms, Furniture, Window/Sign Exposure.



This document has been prepared by The Remlinger Group for advertising and general information only. The information contained herein has been obtained from reliable sources. However, any prospective buyer or tenant should verify all information relating to this property and contained herein.



Floor Plans | Suite C & H



MARKET AREA
5 Mile Radius



DAYTIME POPULATION
152,363



POPULATION
269,566



HOUSEHOLDS
109,962



AVG. HOUSEHOLD INCOME
\$166,070



WALK SCORE
93



BIKE SCORE
90



This document has been prepared by The Remlinger Group for advertising and general information only. The information contained herein has been obtained from reliable sources. However, any prospective buyer or tenant should verify all information relating to this property and contained herein.

www.RemlingerGroup.com

EXCLUSIVELY OFFERED BY



THE
REMLINGER
GROUP

Contact Our Team Today!

Sebastian Camacho

Broker/Consultant

Sebastian@RemlingerGroup.com

(510) 333-0624



10422 NE 37th Cir, Suite 100
Kirkland, WA 98033



www.RemlingerGroup.com



(425) 998-1619



Info@RemlingerGroup.com

www.RemlingerGroup.com/properties/fraser-court-suites

www.RemlingerGroup.com

