

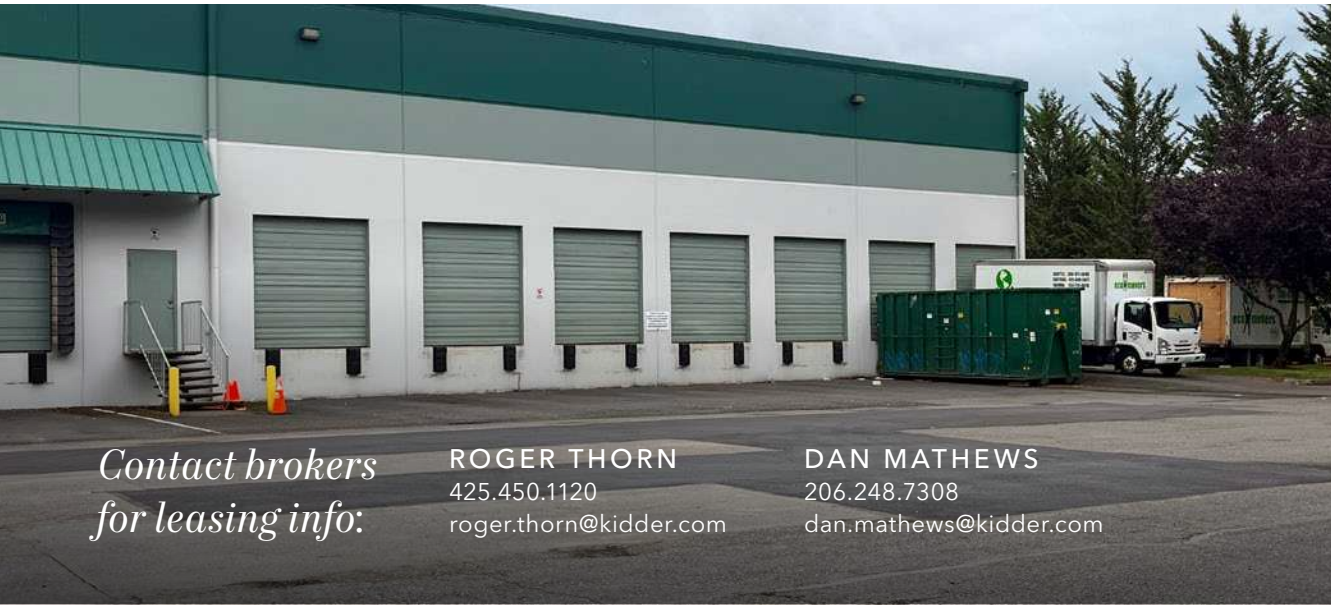


# GREENBAUM BUILDING

*Industrial Spaces Available for Lease in Woodinville*

18815 139TH AVE NE | WOODINVILLE, WA





*Contact brokers  
for leasing info:*

**ROGER THORN**  
425.450.1120  
roger.thorn@kidder.com

**DAN MATHEWS**  
206.248.7308  
dan.mathews@kidder.com

## *Property Highlights*

Excellent parking and outstanding truck maneuverability

Easy access to Hwy 522 and I-405

Zoned GB, City of Woodinville; allows retail and recreational uses

Air-conditioned offices

High-image location with excellent parking

Professionally managed

### **DISTRIBUTION SPACE (AVAILABLE 2/1/25)**

21,168 SF with 1,230 SF office

7 dock-high doors, 3 grade-level doors

24' clear height

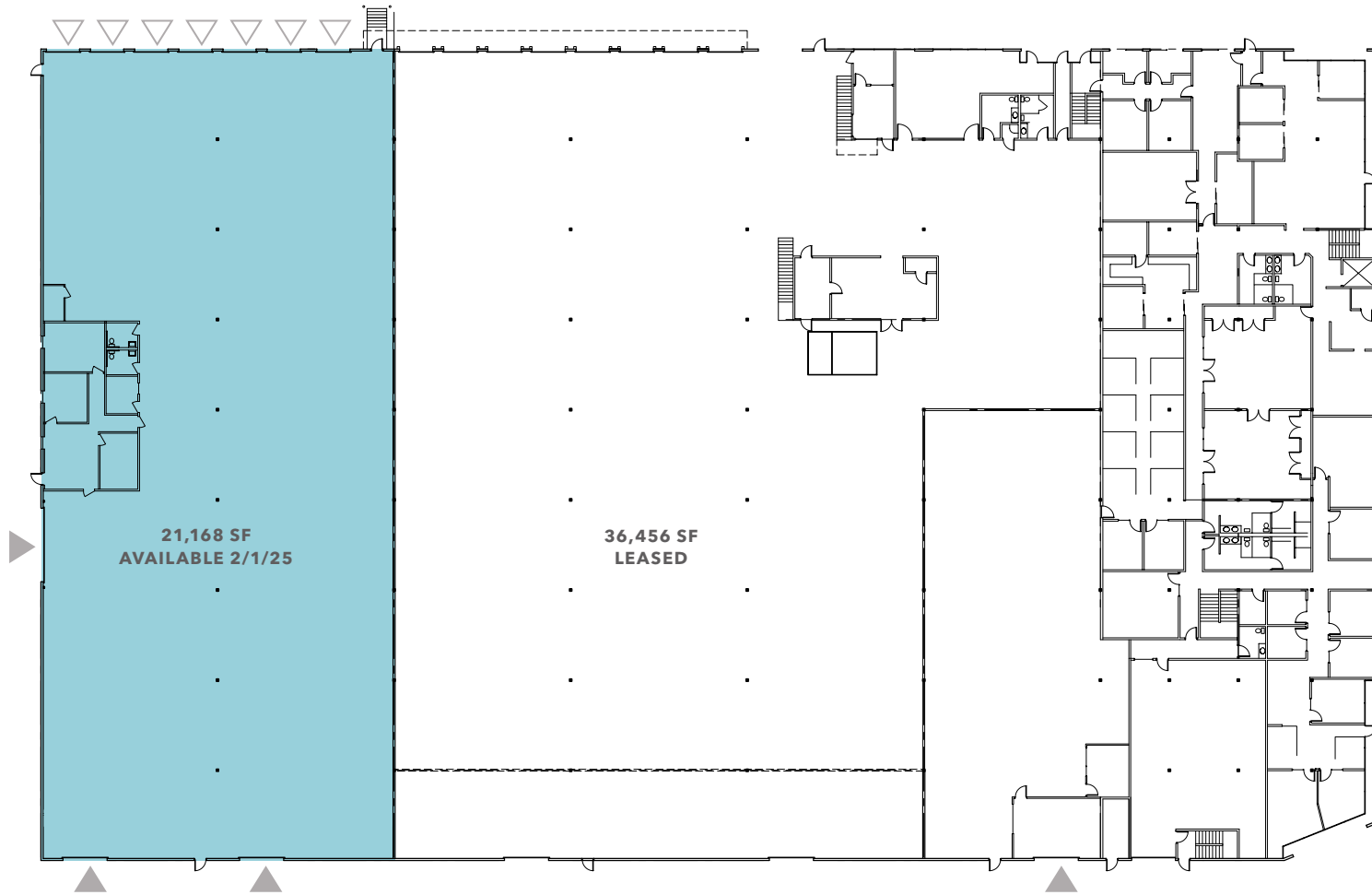
ESFR sprinkler system

### **OFFICE/TECH SPACE (AVAILABLE 8/1/25)**

22,459 SF with 16,579 SF office  
(including 6,839 SF on 2nd floor)

1 grade-level door

# SUITE D | DISTRIBUTION SPACE



**21,168 SF**

TOTAL AVAILABLE

**1,230 SF**

OFFICE

**\$1.20/SF**

WAREHOUSE  
LEASE RATE, NNN

**\$2.00/SF**

OFFICE LEASE RATE, NNN

**02/01/25**

AVAILABLE

▲ Grade-level loading

△ Dock-high loading



# SUITE B | OFFICE/TECH SPACE



*22,459 SF*  
TOTAL AVAILABLE

*16,579 SF*  
OFFICE

*5,880 SF*  
WAREHOUSE

*\$1.20/SF*  
WAREHOUSE  
LEASE RATE, NNN

*\$1.50/SF*  
OFFICE LEASE RATE, NNN

*08/01/25*  
AVAILABLE



GREENBAUM BUILDING







## GREENBAUM BUILDING

*For more information  
about this property, contact*

**ROGER THORN**  
425.450.1120  
roger.thorn@kidder.com

**DAN MATHEWS**  
206.248.7308  
dan.mathews@kidder.com

**KIDDER.COM**

This information supplied herein is from sources we deem reliable. It is provided without any representation, warranty, or guarantee, expressed or implied as to its accuracy. Prospective Buyer or Tenant should conduct an independent investigation and verification of all matters deemed to be material, including, but not limited to, statements of income and expenses. Consult your attorney, accountant, or other professional advisor.

