



JOIN A COLLECTIVE OF ARTISANS

SODO Urbanworks serves as a gathering spot in South Seattle's SODO district. It houses some of the best food, drinks, and people. A community of crafters, striving to engage your taste buds.

**Come as you
are and spend
some time here!**



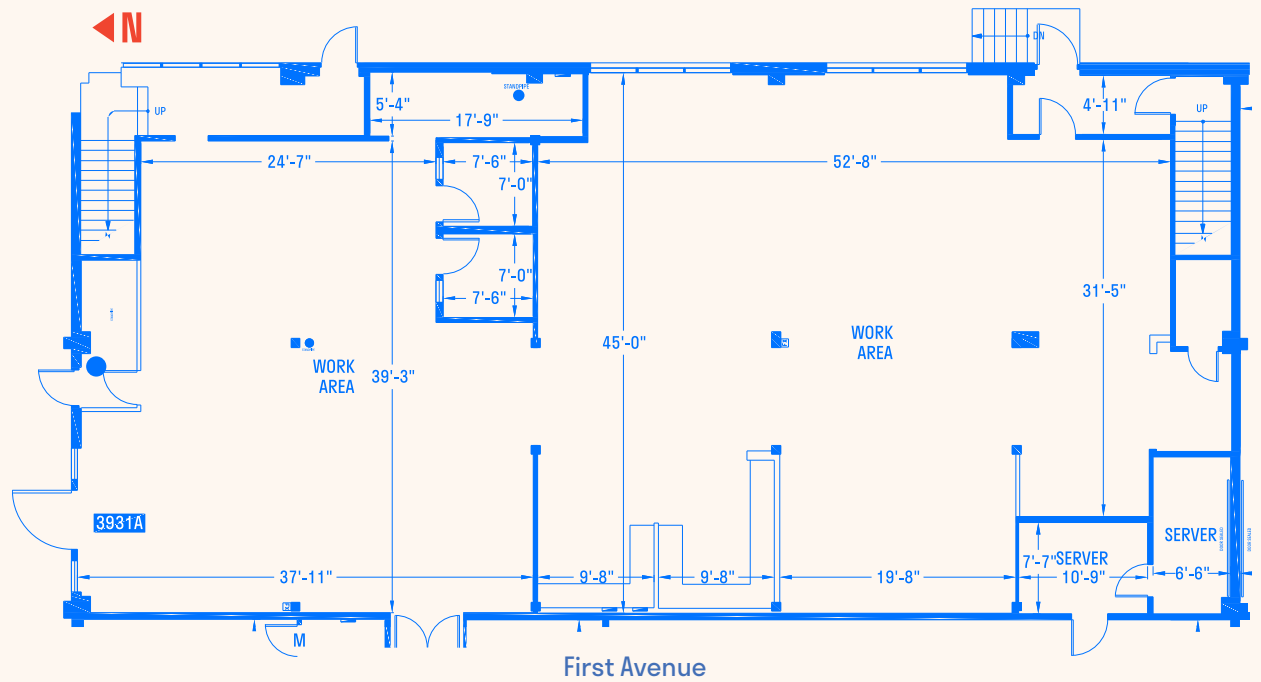
GROUND FLOOR PLAN

SUITE 3931A
11,082 SF



Ground Floor

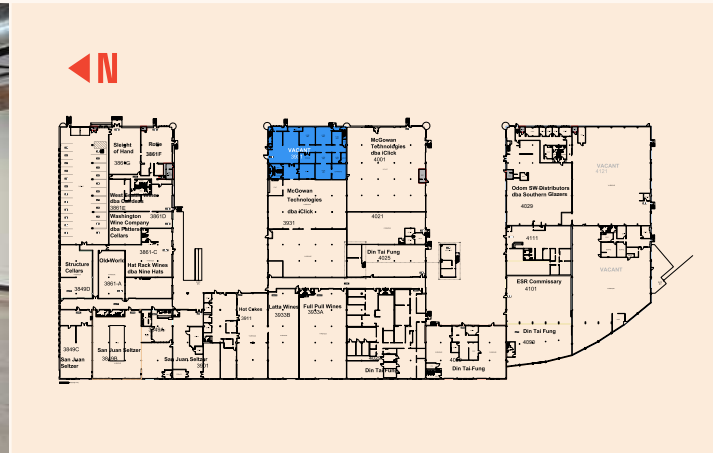
4,667 SF



High image corner unit with frontage to 1st Avenue



14' clear height on the showroom



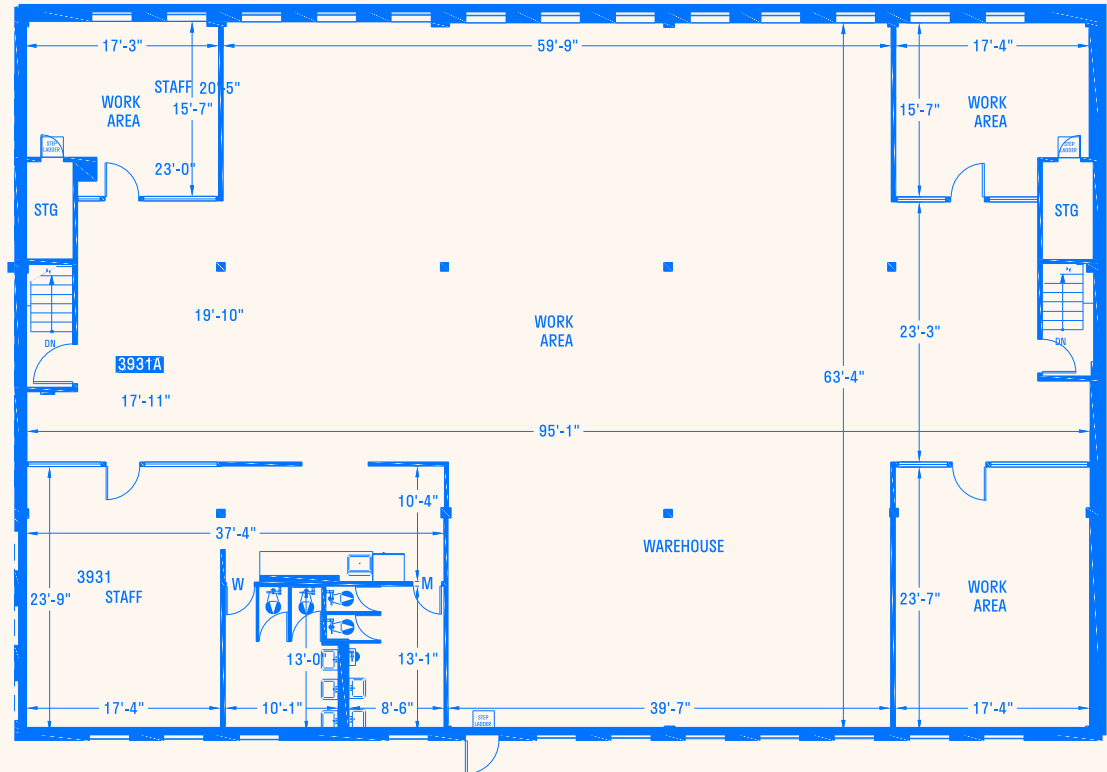
MEZZANINE FLOOR PLAN

SUITE 3931A
11,082 SF



Mezzanine

6,415 SF



High image corner unit with
frontage to 1st Avenue

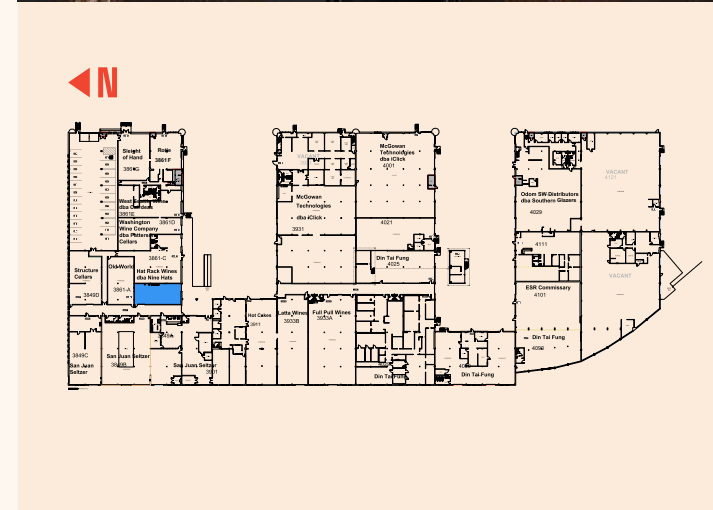


14' clear height on
the showroom



WINE TASTING ROOM

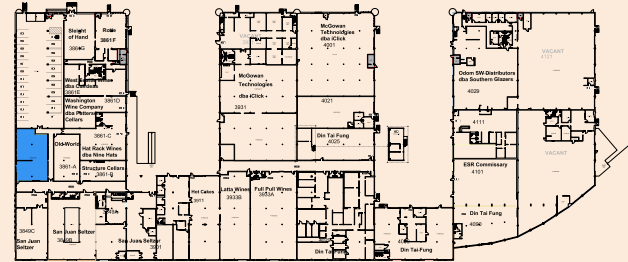
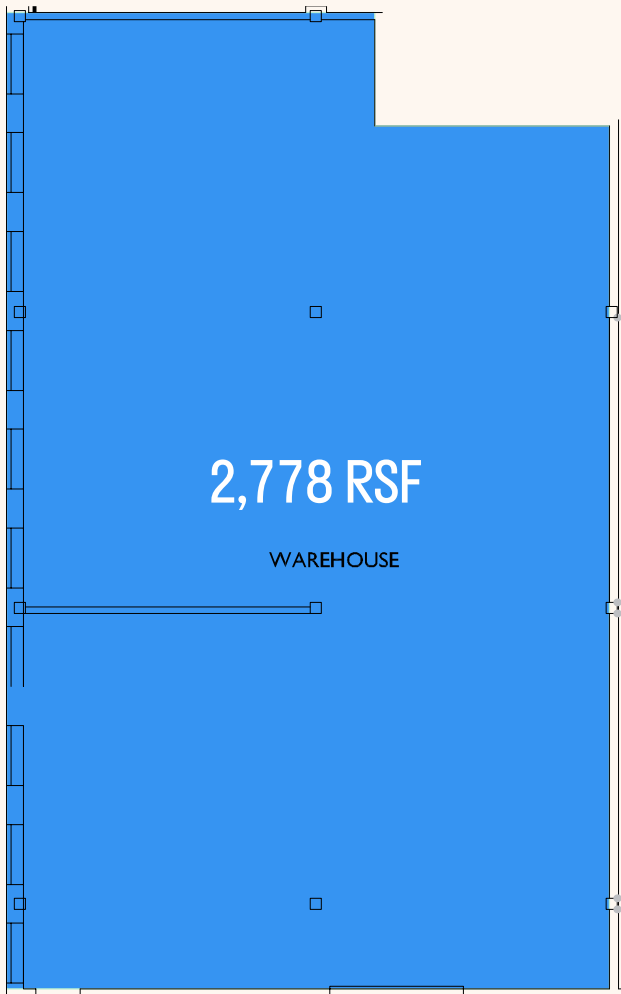
SUITE 3861-B









1,735 RSF

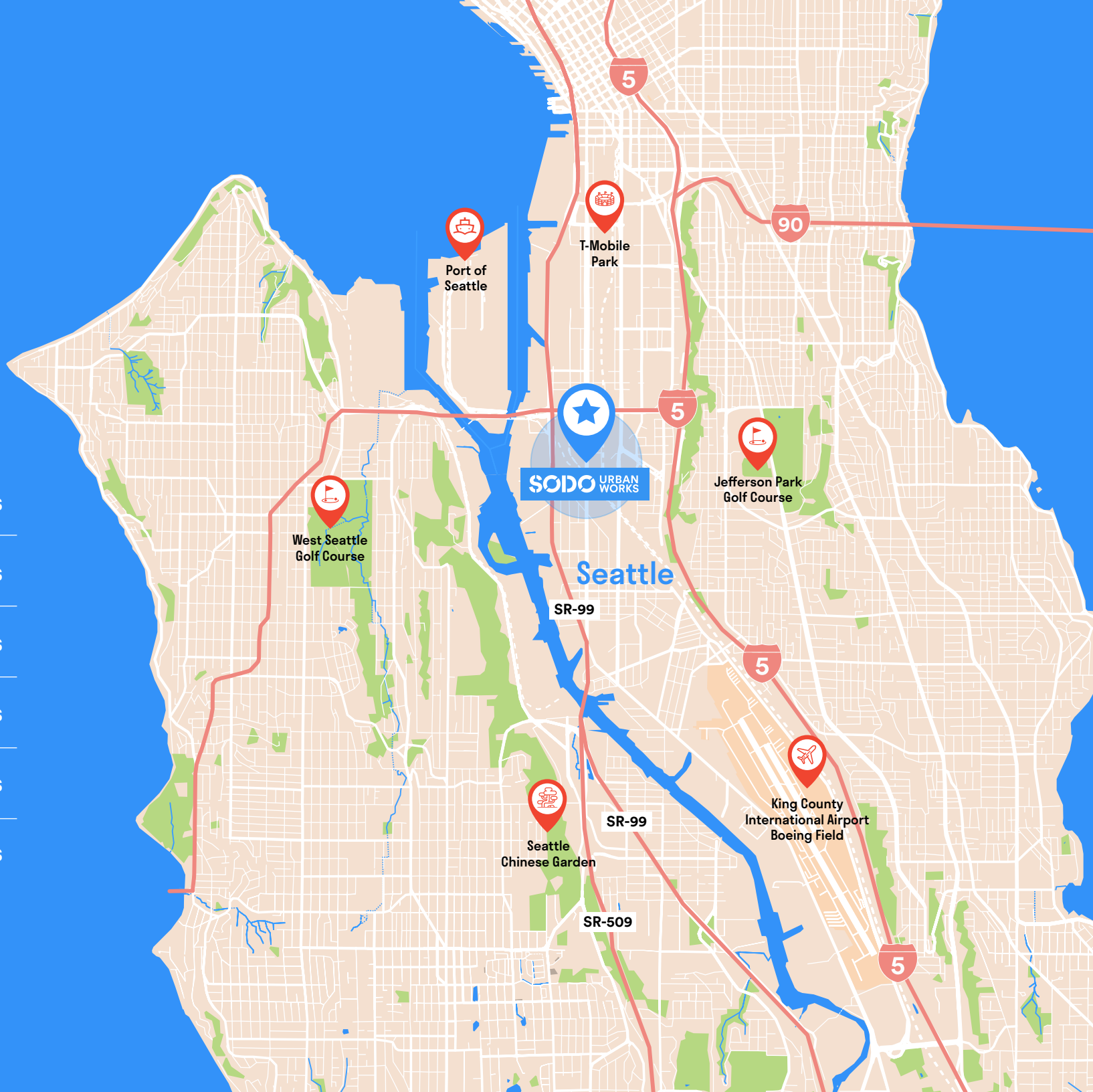
WINE TASTING ROOM AND PRODUCTION SPACE

SUITE 3849-D



LOCATION

-  4 minutes
-  4 minutes
-  5 minutes
-  6 minutes
-  6 minutes
-  8 minutes





BAILEY HALLIS

+1 206 777 5203

bailey.hallis@jll.com

JAKE BOS

+1 425 974 4086

jake.bos@jll.com

Jones Lang LaSalle Americas, Inc. Although information has been obtained from sources deemed reliable, neither Owner nor JLL makes any guarantees, warranties or representations, express or implied, as to the completeness or accuracy as to the information contained herein. Any projections, opinions, assumptions or estimates used are for example only. There may be differences between projected and actual results, and those differences may be material. The Property may be withdrawn without notice. Neither Owner nor JLL accepts any liability for any loss or damage suffered by any party resulting from reliance on this information. If the recipient of this information has signed a confidentiality agreement regarding this matter, this information is subject to the terms of that agreement.

© 2023 Jones Lang LaSalle IP, Inc. All rights reserved.

**The outbreak of the COVID-19 virus (novel coronavirus) since the end of January 2020 has resulted in market uncertainty and volatility. While the economic impact of a contagion disease generally arises from the uncertainty and loss of consumer confidence, its impact on real estate values is unknown at this stage.

