

MEDICAL SPACE FOR LEASE

# WOODINVILLE MEDICAL CENTER



17000 140th Ave NE Woodinville, Washington



111  
For Lease  
425 974 4000

- WOODINVILLE MEDICAL CENTER**
- THE EVERETT CLINIC
  - COMPREHENSIVE NATURAL
  - SOLEIL ORTHODONTICS
  - WOODINVILLE PHARMACY
  - KOCZARSKI FAMILY & COSMETOLOGY
  - WASHINGTON JAW & FACIAL
  - WOODINVILLE PEDIATRICS
  - WOODINVILLE PEDIATRIC DENTISTRY
  - WOODINVILLE ENDODONTICS
  - WOODINVILLE PHYSICAL THERAPY



# PROJECT HIGHLIGHTS



**33,277 SF**  
**4 STORIES**



**4.0 / 1,000 SF PARKING RATIO**

Free surface and covered parking  
with ability for more



**EASY ACCESS TO**  
**522 AND I-405**



**NEW INTERIOR & EXTERIOR FINISHES**

New lit monument sign, tenant directory,  
suite entry signs and suite improvements



**ADJACENT TO EVERGREEN HEALTH,**  
**BRIGHT HORIZONS**

Walking distance to downtown Woodinville





# BUILDING AVAILABILITIES

## SUITE 101

**5,938 RSF | Available 30-60 days notice**

- Newly constructed clinic space
- Grade level access
- In suite restrooms
- Efficient build with 20 exam rooms

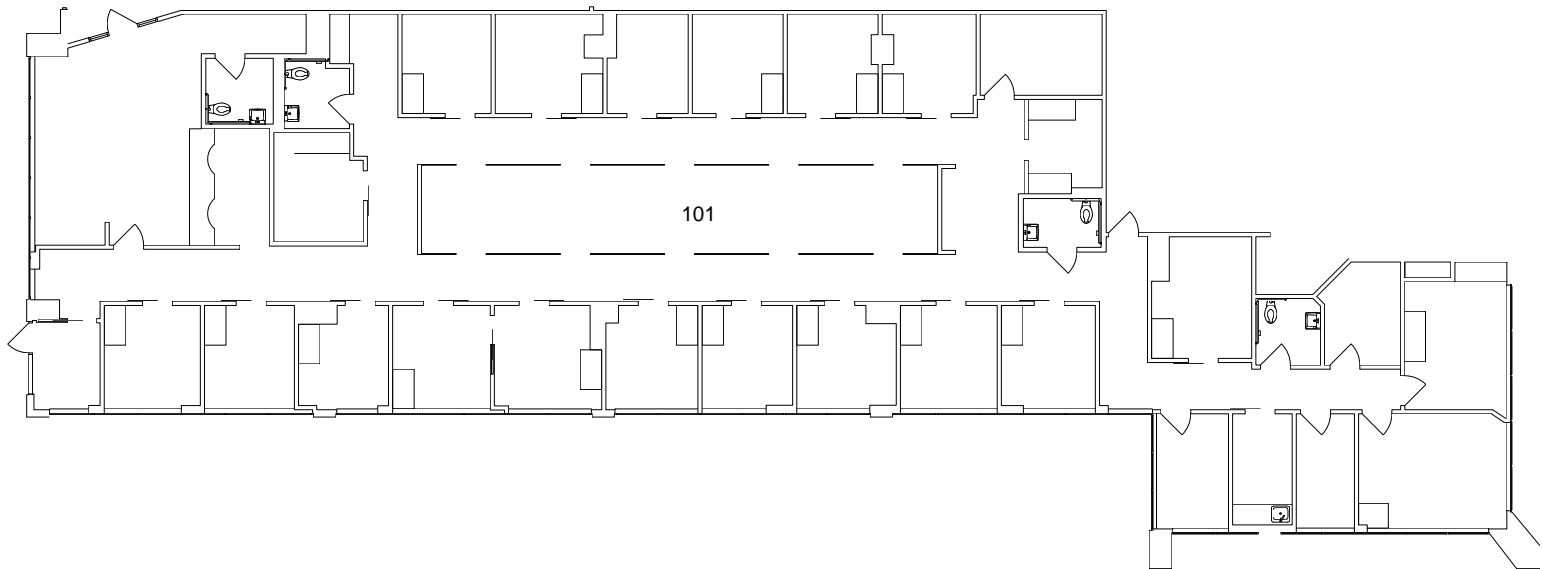


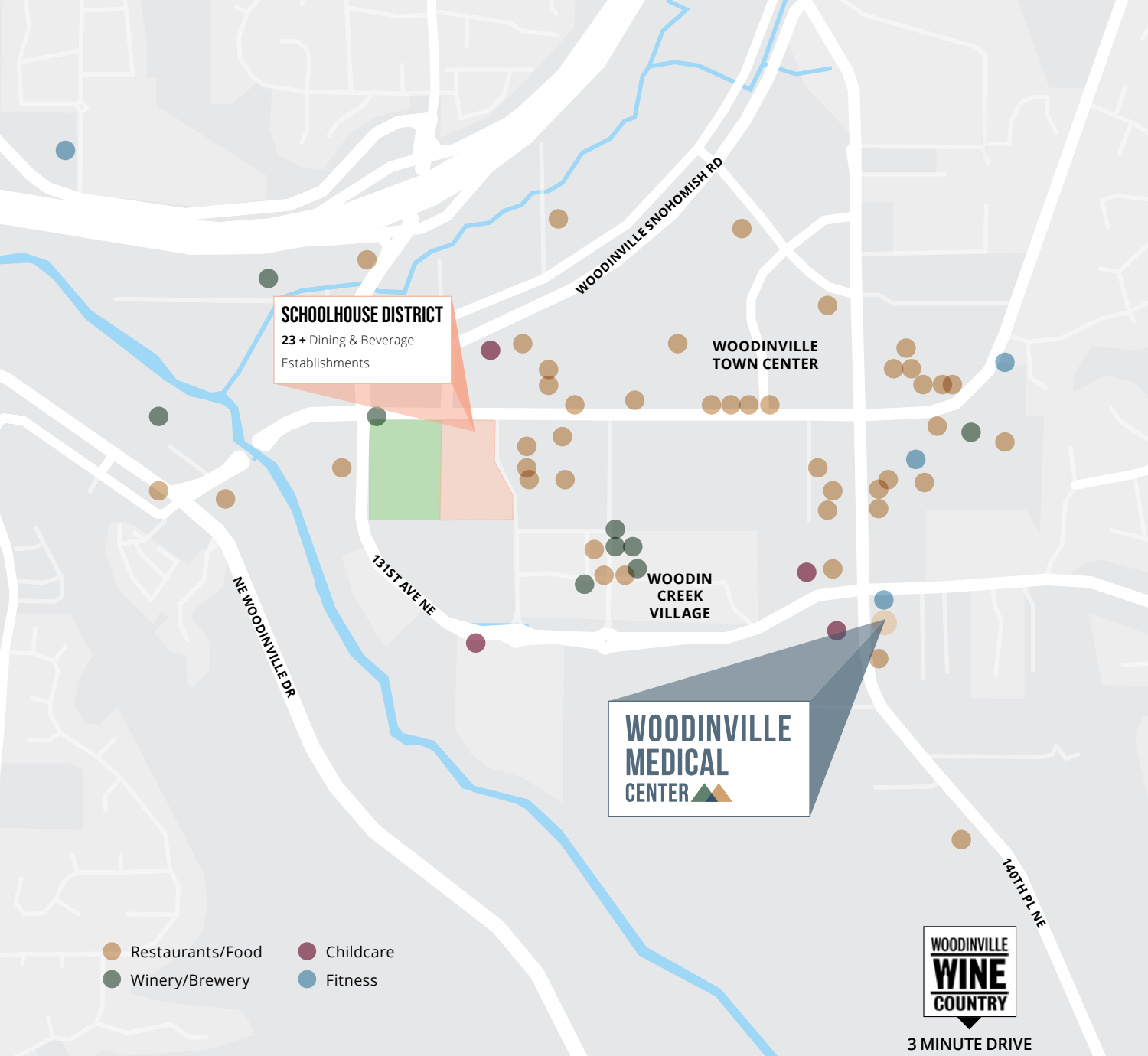
BUILDING   
**AVAILABILITIES**

---

SUITE  
**101**

5,938 RSF | Available 30-60 days notice





## NEIGHBORHOOD AMENITIES

Walking distance to single and multi-family residential

Abundant nearby amenities, including: restaurants, retail, wineries, grocery and more

Located only 3 miles north of Redmond and 8 miles from Bellevue



**Sam Ziemba**  
+1 425 974 4005  
Sam.Ziemba@jll.com

**Jake Bos**  
+1 425 974 4086  
Jake.Bos@jll.com

**Bailey Hallis**  
+1 425 974 4009  
Bailey.Hallis@jll.com

© 2021 Jones Lang LaSalle IP, Inc. All rights reserved. All information contained herein is from sources deemed reliable; however, no representation or warranty is made to the accuracy thereof. Jones Lang LaSalle Brokerage, Inc.