

2807 70<sup>th</sup> Avenue East  
Fife, WA

**10.38 AC Site  
with 13,507 SF  
Cross-Dock  
Facility**

**Property  
Available**

**CBRE**

**YELLOW**

# Property Specifications

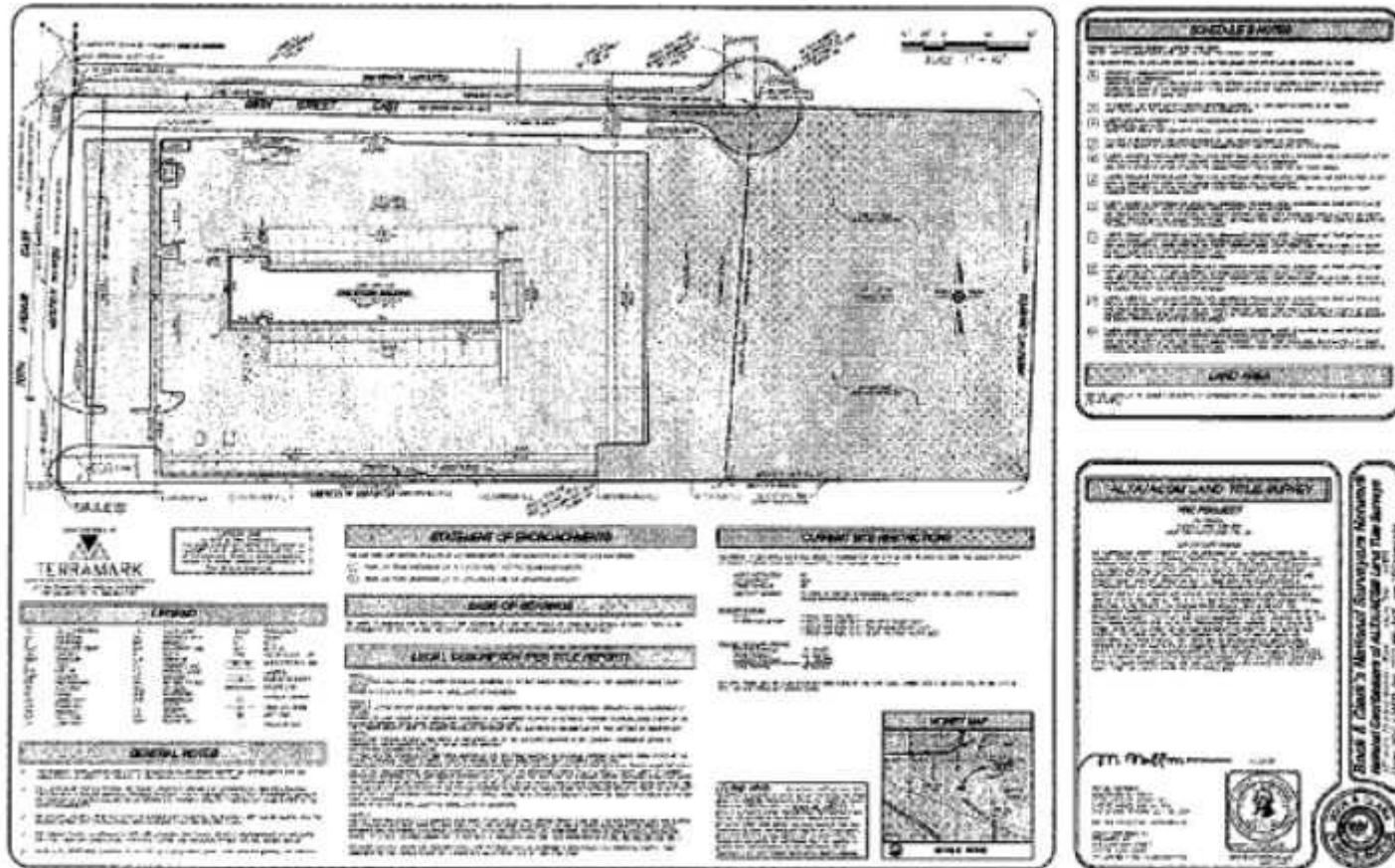
## Building Details

Total Site Size:	451,153 SF (10.38 AC)
Building Size:	13,507 SF
Office Size:	507 SF
Building Dimensions:	60x225
Building Configuration:	Rectangle
Clear Height:	18'
Dock Doors:	40
Truck Court Depth:	125'
Trailer Parking:	85+
Auto Parking:	35+
Slab Thickness:	Likely 5"



# Floor Plan

## EXHIBIT H - REDUCED MAINTENANCE AERA - TACOMA

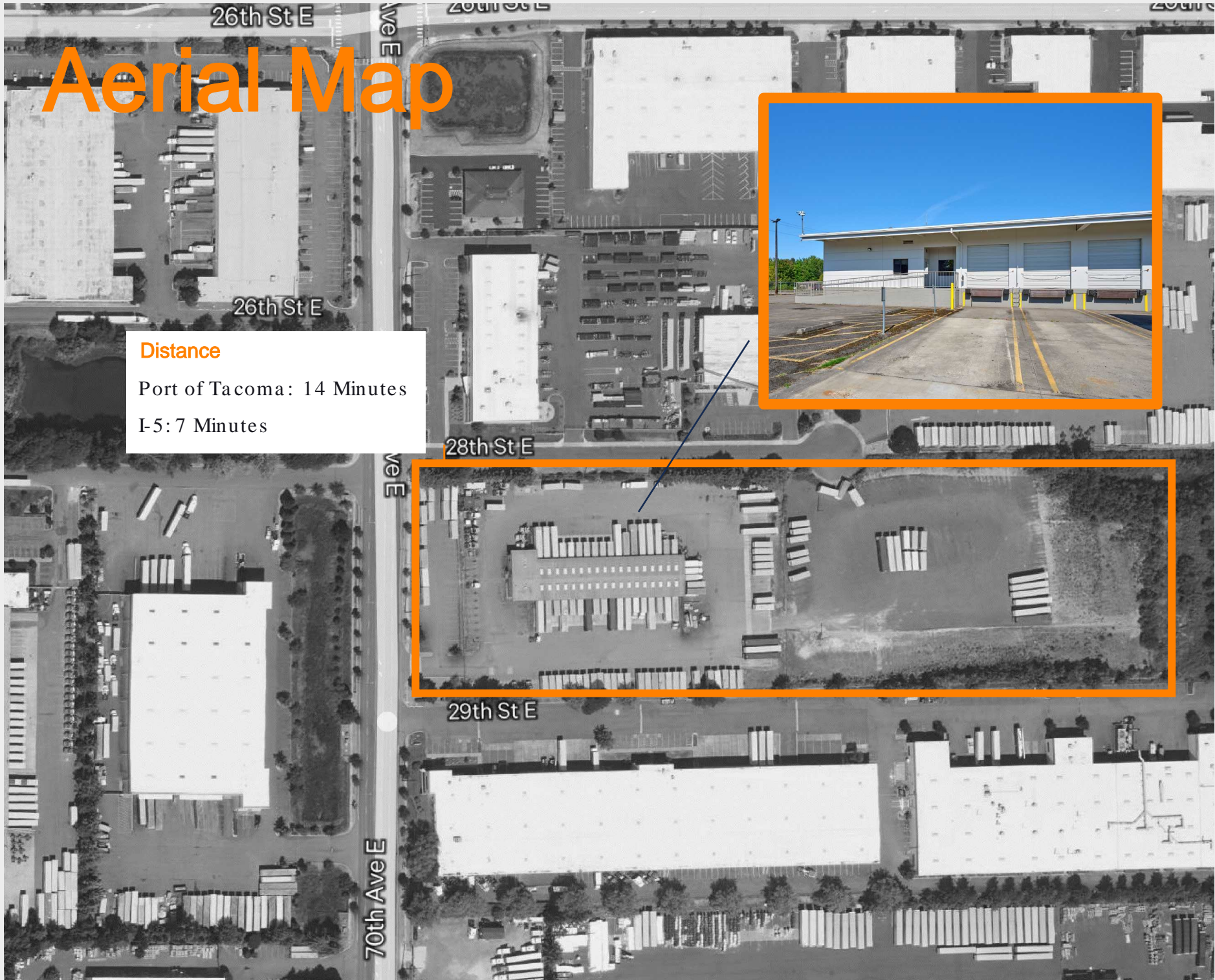


# Aerial Map

## Distance

Port of Tacoma: 14 Minutes

I-5: 7 Minutes



---

# 2807 70<sup>th</sup> Avenue East

## 10.38 AC Site with 13,507 SF Cross-Dock Facility

**Andrew Stark**

+1 206 310 9044

[andrew.stark@cbre.com](mailto:andrew.stark@cbre.com)

**Andrew Hitchcock**

+1 206 790 2211

[andrew.hitchcock@cbre.com](mailto:andrew.hitchcock@cbre.com)

**CBRE**



© 2024 CBRE, Inc. All rights reserved. This information has been obtained from sources believed reliable but has not been verified for accuracy or completeness. CBRE, Inc. makes no guarantee, representation or warranty and accepts no responsibility or liability as to the accuracy, completeness, or reliability of the information contained herein. You should conduct a careful, independent investigation of the property and verify all information. Any reliance on this information is solely at your own risk. CBRE and the CBRE logo are service marks of CBRE, Inc. All other marks displayed on this document are the property of their respective owners, and the use of such marks does not imply any affiliation with or endorsement of CBRE. Photos herein are the property of their respective owners. Use of these images without the express written consent of the owner is prohibited.