

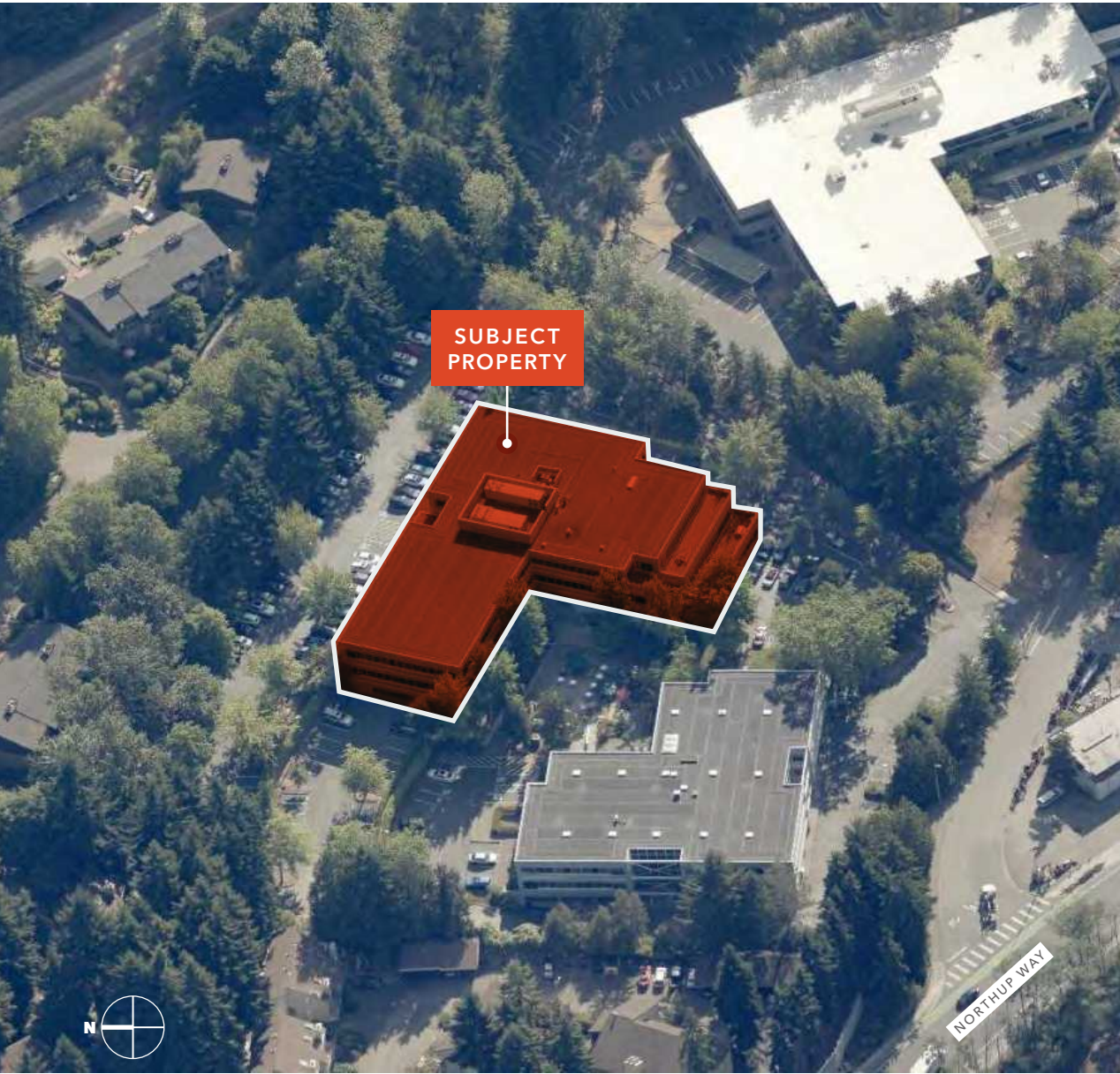
For Sublease

EVERGREEN OFFICE PARK BLDG II

*1,943 SF Office
Suite for Sublease
in Bellevue, WA*

11000 NE 33RD PLACE, BELLEVUE, WA

 **Kidder
Mathews**



*Rare opportunity to sublease
office space in the heart of
beautiful Bellevue, WA*

YEAR BUILT	1986
YEAR RENOVATED	2018
TOTAL BUILDING SF	101,223 SF
RENTAL RATE	\$25.00/SF, NNN
NNN RATE	\$13.22/SF
TOTAL MONTHLY RENT	\$6,188.46
LEASE TERM	July 31, 2026

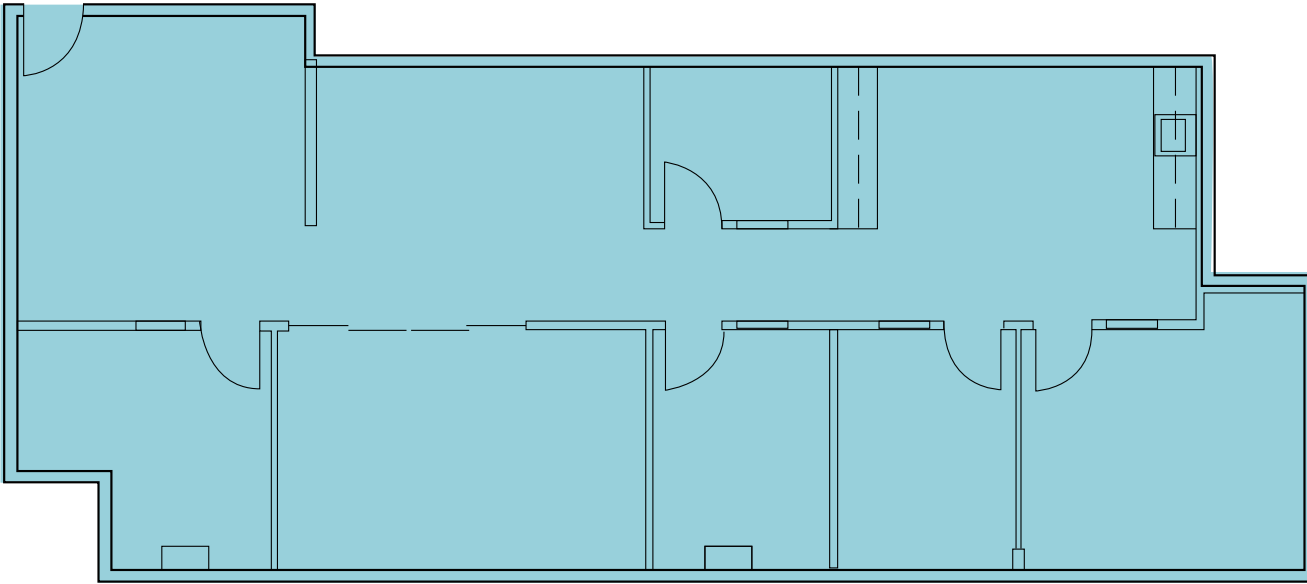
1,943 SF
AVAILABLE AREA

PROPERTY PHOTOS



FLOOR PLAN

Suite 101



1,943 SF

AVAILABLE AREA

\$25.00/SF

LEASE RATE + NNN

\$13.22/SF

NNN

NOW

AVAILABLE

07/31/26

SUBLEASE EXPIRES



A HIGHLY- ACCESSIBLE LOCATION

Conveniently located just off of SR-520 and I-405

Ample free surface parking with available covered parking at market rates

Power provided through vault-mounted transformers and consists of 1,000 amp 277/480 volt, 3-phase, 4-wire, 4-section main distribution panels

Sublease ends 07/31/2026



EVERGREEN OFFICE PARK BLDG II

Exclusively listed by

COLTON TEGLOVIC

Kidder Mathews

425.281.5261

colton.teglovic@kidder.com

SEAMUS OBER

Colliers International

425.652.3890

seamus.ober@colliers.com

KIDDER.COM

This information supplied herein is from sources we deem reliable. It is provided without any representation, warranty, or guarantee, expressed or implied as to its accuracy. Prospective Buyer or Tenant should conduct an independent investigation and verification of all matters deemed to be material, including, but not limited to, statements of income and expenses. Consult your attorney, accountant, or other professional advisor.

