

# BENSON BUSINESS PARK

FOR LEASE: 3 UNITS AVAILABLE

25012 – 25022 104TH AVE SE | KENT, WA 98030

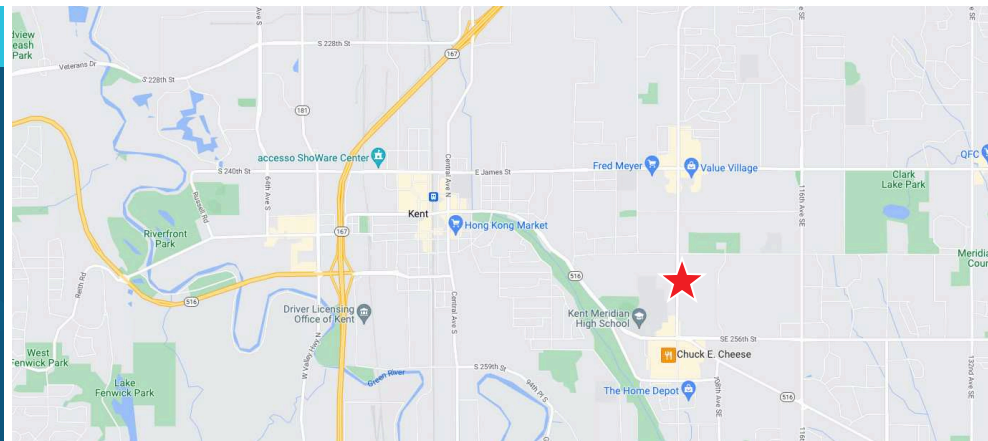


## LEASE INFORMATION

SUITE 12-E	SUITE 18-A	SUITE 22-D	LEASE RATE	NNN RATE
966 SF	1,356 SF	2,595 SF	\$19.00/SF/YR + NNN	\$7.80/SF/YR

## PROPERTY HIGHLIGHTS

- Great mix of tenants including medical and service uses
- Plenty of on-site parking
- Great signage
- Conveniently located in the Benson neighborhood off 104th Ave SE



**BRIANA HICKEY**  
253.779.2424

bhickey@neilwalter.com

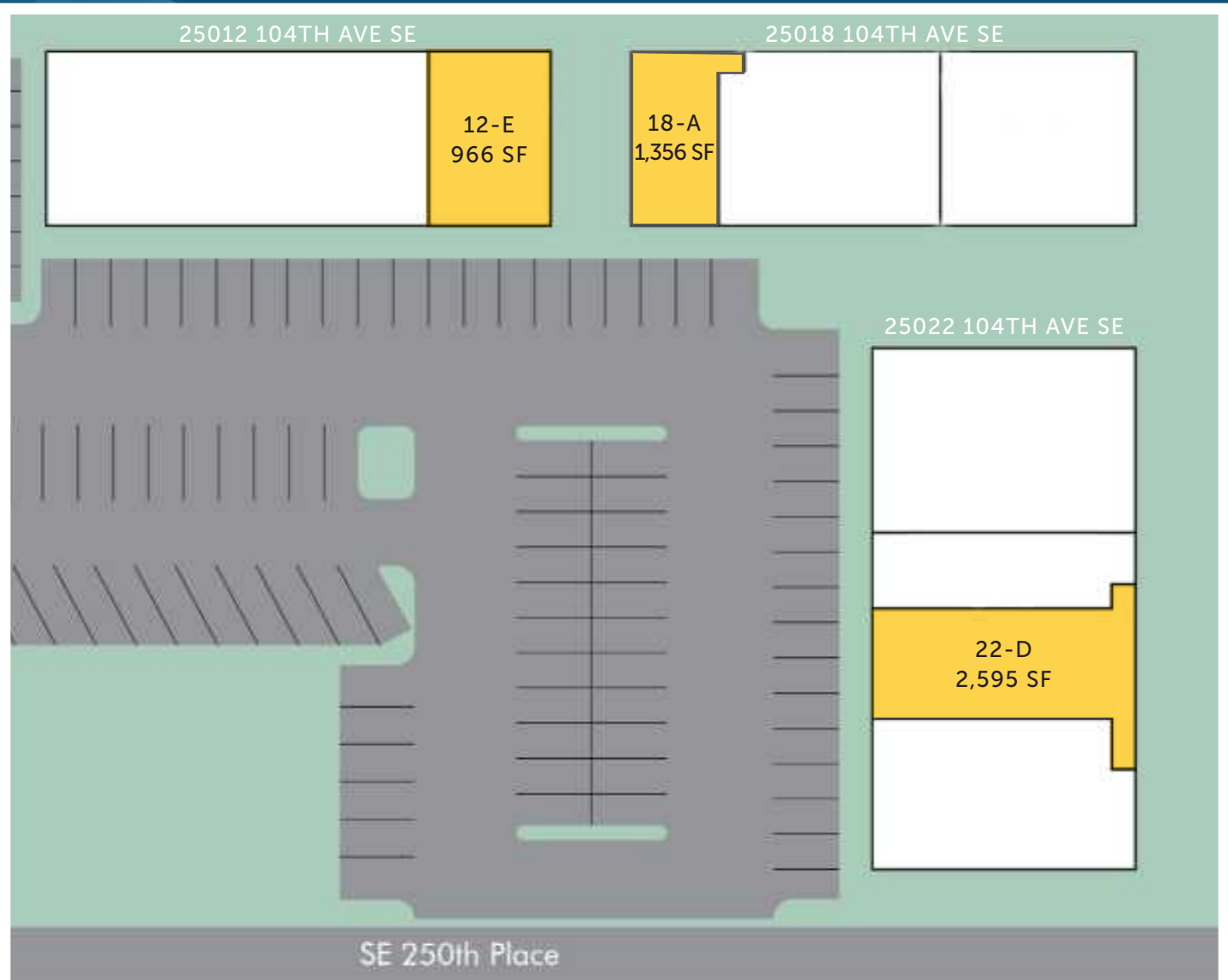
**CAMERON VALENTINE**  
253.779.2427

cvalentine@neilwalter.com

All information references in this document are approximate. The information contained herein is contained from sources deemed reliable. It is provided without representation, warranty, or guarantee, expressed or implied as to accuracy. Prospective buyer or tenant should conduct its own independent investigation relating to the property, government codes and regulations, allowed uses, and all other matters, regardless of whether they are referred to or contained in this document.

# BENSON BUSINESS PARK

25012 – 25022 104TH AVE SE | KENT, WA 98030



**BRIANA HICKEY**  
253.779.2424  
bhickey@neilwalter.com

**CAMERON VALENTINE**  
253.779.2427  
cvalentine@neilwalter.com

1940 East D St, #100  
Tacoma, WA 98421  
253.779.8400  
www.neilwalter.com

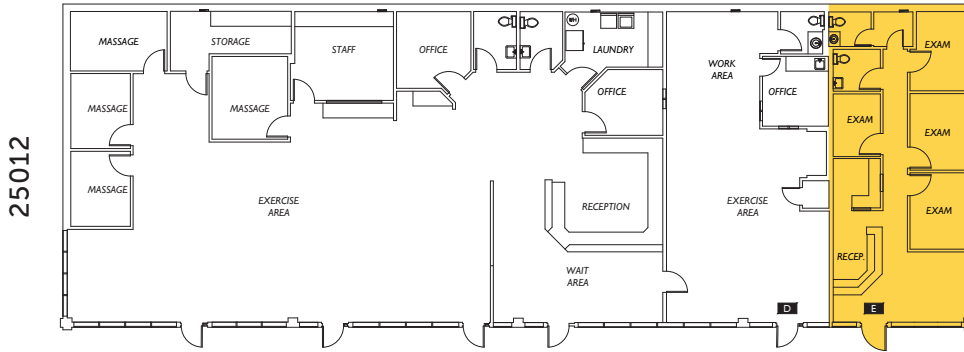
All information references in this document are approximate. The information contained herein is contained from sources deemed reliable. It is provided without representation, warranty, or guarantee, expressed or implied as to accuracy. Prospective buyer or tenant should conduct its own independent investigation relating to the property, government codes and regulations, allowed uses, and all other matters, regardless of whether they are referred to or contained in this document.

# BENSON BUSINESS PARK

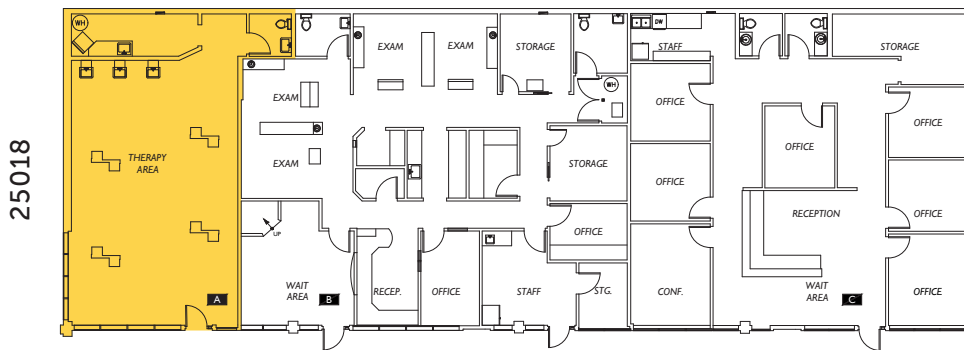
25012 – 25022 104TH AVE SE | KENT, WA 98030



### Suite 12-E: 966 SF



### Suite 18-A: 1,356 SF



### Suite 22-D: 2,595 SF



**BRIANA HICKEY**  
253.779.2424  
bhickey@neilwalter.com

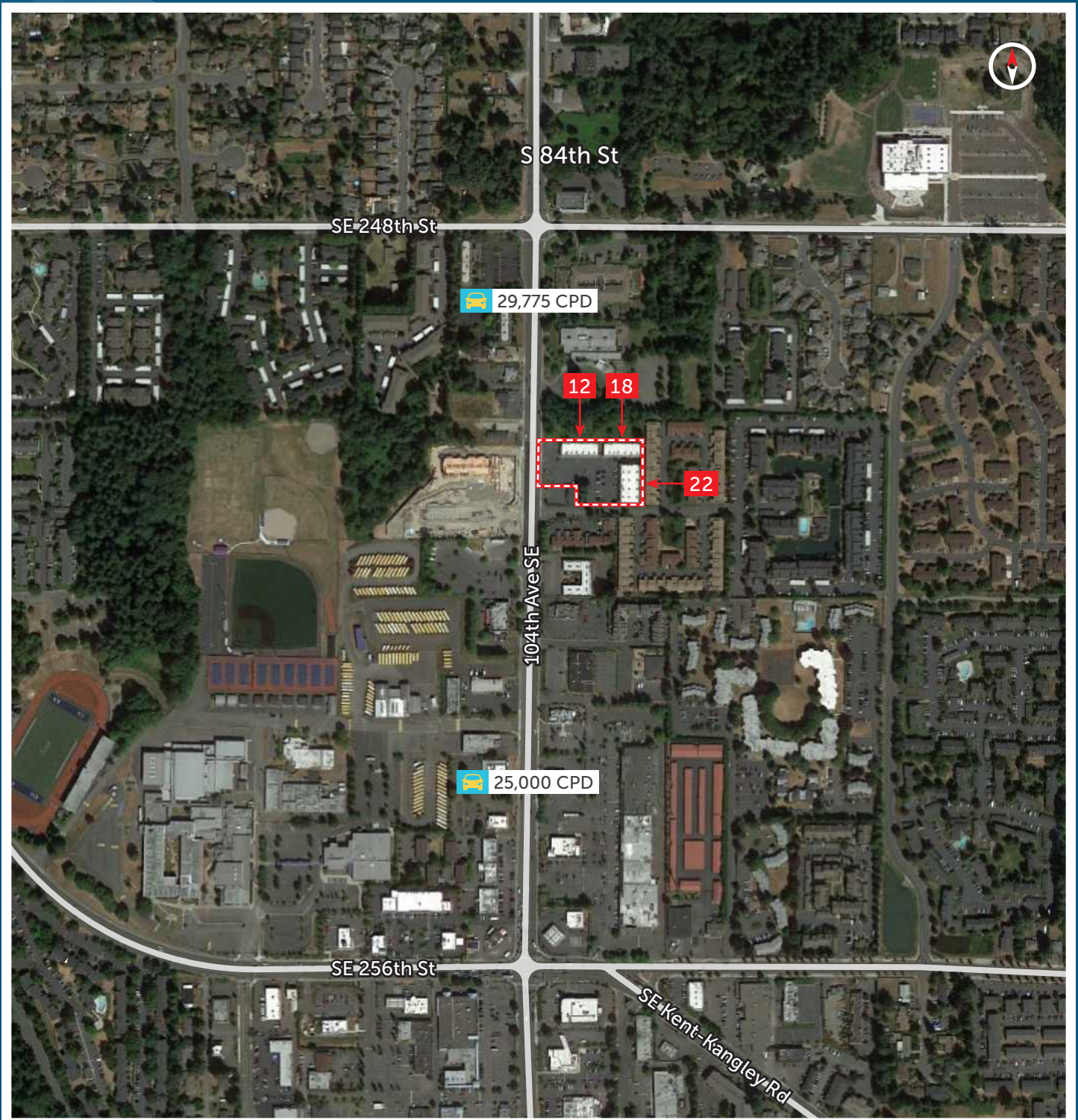
**CAMERON VALENTINE**  
253.779.2427  
cvalentine@neilwalter.com

1940 East D St, #100  
Tacoma, WA 98421  
253.779.8400  
www.neilwalter.com

All information references in this document are approximate. The information contained herein is contained from sources deemed reliable. It is provided without representation, warranty, or guarantee, expressed or implied as to accuracy. Prospective buyer or tenant should conduct its own independent investigation relating to the property, government codes and regulations, allowed uses, and all other matters, regardless of whether they are referred to or contained in this document.

# BENSON BUSINESS PARK

25012 – 25022 104TH AVE SE | KENT, WA 98030



**BRIANA HICKEY**  
253.779.2424  
bhickey@neilwalter.com

**CAMERON VALENTINE**  
253.779.2427  
cvalentine@neilwalter.com

1940 East D St, #100  
Tacoma, WA 98421  
253.779.8400  
www.neilwalter.com

All information references in this document are approximate. The information contained herein is contained from sources deemed reliable. It is provided without representation, warranty, or guarantee, expressed or implied as to accuracy. Prospective buyer or tenant should conduct its own independent investigation relating to the property, government codes and regulations, allowed uses, and all other matters, regardless of whether they are referred to or contained in this document.